



Public Health
Prevent. Promote. Protect.

**McLeod County
Public Health**

Public Health Annual Report

2017

1805 Ford Ave North, Suite 200
Glencoe, MN 55336
www.co.mcleod.mn.us
Telephone: 320-864-3185 Fax: 320-864-1484

Follow us on:





Mission

The mission of McLeod County Public Health is to protect, promote and improve the health of all people in McLeod County through education, empowerment and collaboration.

Our agency has provided public health services in McLeod County since the 1920's. We provide community care services, family health services, general community health promotion, environmental health services and multiple clinic opportunities.



Public Health
Prevent. Promote. Protect.

Meeker McLeod Sibley
Community Health Services

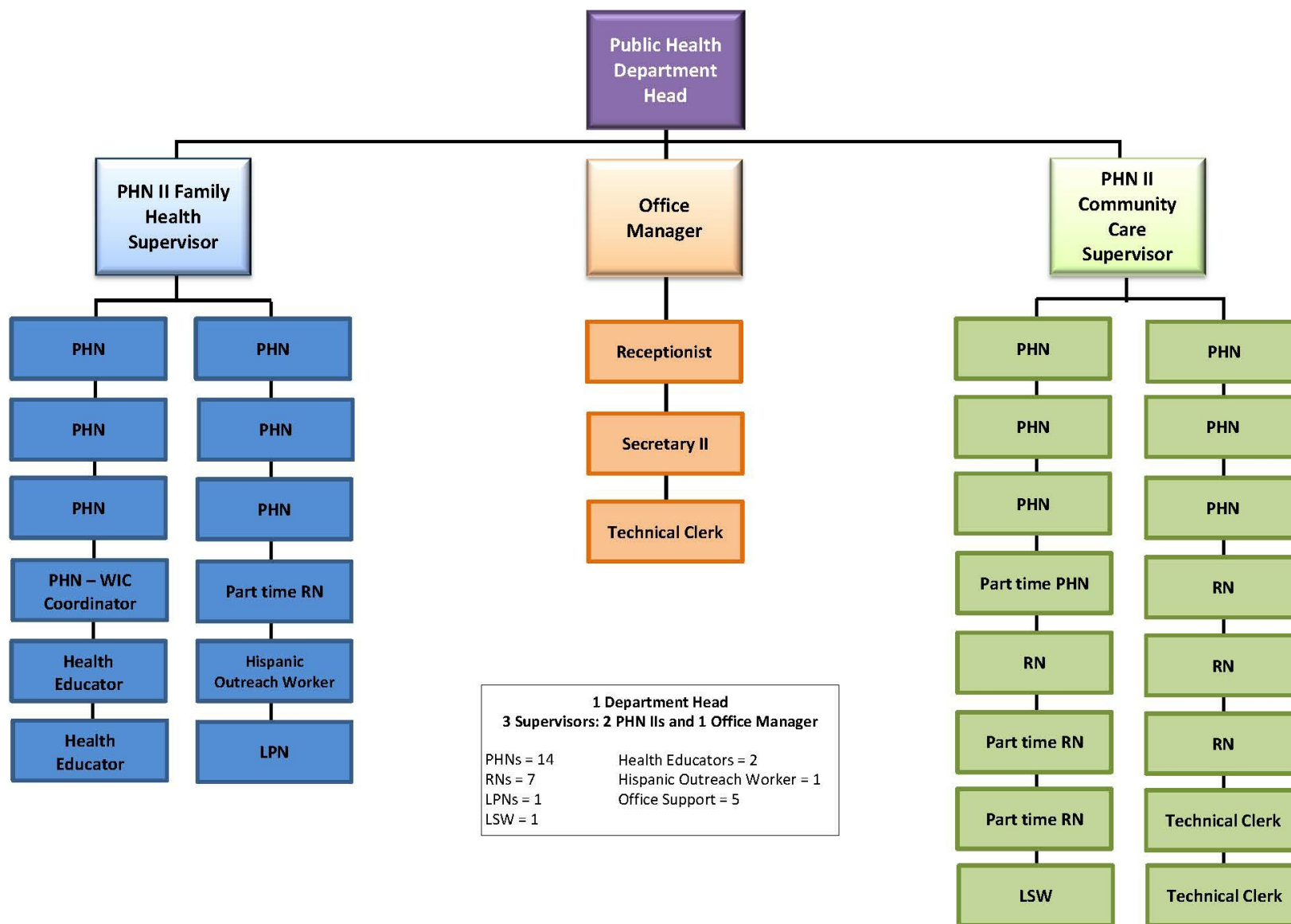
Meeker-McLeod-Sibley Community Health Services

Forty-eight locally-governed Community Health Boards oversee local health departments that work in tandem with the Minnesota Department of Health (MDH) to fulfill public health responsibilities. This interlocking, statewide system is a critical component of an effective response to public health threats as well as efforts to improve the health of Minnesotans.

McLeod County Public Health has been a member of the Meeker-McLeod-Sibley Community Health Services (MMS CHS) since it was established by a joint powers agreement in 1980. Within this structure, the three counties work closely together, sharing staff and resources to jointly plan and implement health improvement efforts while maintaining individual public health agencies, budgets and unique programs.

Public Health Organizational Chart

McLeod County Public Health Department



Six Essential Areas of Public Health Responsibility



Assure an adequate public health infrastructure

- Assess health needs of local communities.



Protect against environmental health hazards

- Investigate and decrease public health nuisances.
- Inspect and coordinate repairs for lead and other Healthy Homes hazards.



Promote healthy communities & healthy behaviors

- Develop policies to foster healthy communities.
- Offer home visits to high-risk pregnant women and new families.
- Implement youth tobacco and chemical use prevention programs.



Prepare for & respond to disasters, & assist communities in recovery

- Develop response plans for re-emergence of Measles and new emerging threats like Zika.



Prevent the spread of infectious diseases

- Investigate and control communicable diseases
- coordinate immunization clinics.



Assure quality & accessibility of health services

- Perform long-term care consultations.
- Operate Women, Infants, and Children (WIC) clinics.
- Provide health care services at county correctional facilities.
- Host dental clinics and provide fluoride varnishing.

Assuring an adequate public health infrastructure

Our Teams



Support Staff

Vision:

Apply our knowledge and skills to support our Community Care and Family Health teams in reaching their common goals of promoting optimal health for our community.

Community Care

Vision:

Continue to promote and maintain optimal health and safety of clients and family in their homes by assessing the needs of clients, families, and communities and developing a plan of care to meet identified needs.



Family Health

Vision:

Promote, protect, and improve the health of families and children in McLeod County.



All Staff

This list will show the breakdown of Public Health employees by role and FTE:

Breakdown of Staff

- Director - 1 FTE
- Office Manager - 1 FTE
- Public Health Nurse II- Team Leaders - 2 FTE
- Public Health Nurses - 11 FTE
- Registered Nurses - 7 FTE
- Health Educators - 1 FTE
- Social Worker - 1 FTE
- Dietitian - 1 FTE
- Licensed Practical Nurse - 1 FTE
- Support Staff - 5 FTE

We have 34 regular employees and 1 contract employee (Hispanic outreach worker)

Promoting healthy communities and behaviors



Healthy Communities Leadership Team

The **Meeker McLeod Sibley Healthy Communities Leadership Team** (MMS HCLT) is a coalition of community members that has been in existence for over 15 years

The **Mission** of the CLT is to advance healthy living within Meeker, McLeod and Sibley Counties

The **Vision** of the CLT is to partner with communities to encourage and support efforts to impact environmental change and enhance healthful living

Collective Action

MMS CHS has partnered with agencies involved in MMS Healthy Communities to use a collective action framework in order to increase efficiencies and decrease duplication.

Collective action occurs when organizations agree to coordinate activities in pursuit of shared objectives. While community partners are active and engaged with community-level initiatives, there are still internal agency priorities.

The collective action approach requires collaboration and partnerships to work on overarching goals to address the priority areas, while each agency continues to utilize local agency data and work on interventions specific to their agency.

Collectively, all the agency interventions contribute to the overall common goal.

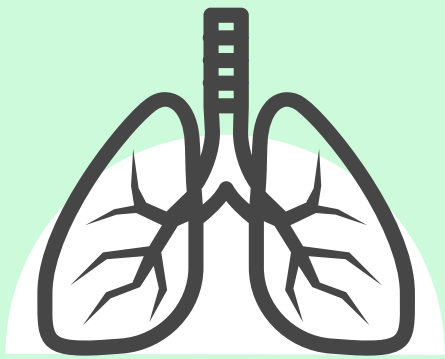
Current Priority Areas of the Community Health Assessment

- 1 Obesity
- 2 Senior Health
- 3 Mental Health
- 4 Access to care
- 5 Choice/behavior/culture
- 6 Binge Drinking

2017 CLT Highlights

- Exploration of Tobacco 21 in Hutchinson
- Continuation and expansion of the MMS Mental Health Task Force
- Voted on and agreed to fund \$4,000 in mini grants to local organizations with similar focus areas in 2018

Prevent the spread of infectious diseases



Tuberculosis

McLeod County Public Health works to provide early identification and reduction of risk in transmission of tuberculosis (TB) to employees, clients, and residents. Public Health works with the Minnesota Department of Health and Centers for Disease Control and Prevention to inform exposed people, investigate concerns and provide medication of tuberculosis treatment as needed.

McLeod County experienced an active case of tuberculosis that was monitored over the course of 2017. Below is a table of the Investigation Summary.

TB Contact Investigation Summary 2017

An active case of Tuberculosis (TB) was identified in July 2017. Additional investigation identified 22 contacts who were all screened for tuberculosis. Of those 22 individuals, 13 received additional medical follow up and were offered preventative latent TB treatment. Five individuals started preventative started preventative latent TB medication therapy. No new active TB cases were diagnosed.

The initial phase of the TB investigation ended in August of 2017 and moved into case management and medication phase, which continued for approximately 9 months. The role of public health in this investigation was more than just tuberculosis management.

Public Health continued to work closely with the individual with TB on a daily basis to assure that medication was being taken and that the newly diagnosed diabetes was being effectively managed. This was important because TB treatment is not effective if blood sugars are not well-controlled.

Collaboration occurred with county and city administrators, employers, employees, MDH, other county public health departments, Social Services and medical clinics to manage this investigation and provide full customer service.



Collaboration



Protect against environmental hazards

2017 Environmental/Nuisance Year End Report

All intake staff receive nuisance and environmental concern reports. Three full time staff work to investigate nuisance reports. In 2017, the total staff time put towards environmental activities was 462.5 hours.

19 public health nuisance complaints were received regarding the following:

- 3 – Pests (i.e. bed bugs and cockroaches)
- 6 – Extreme clutter/hoarding
- 2 – Mold
- 1 – Smoke from a nearby outdoor wood burning furnace
- 7 – Unsanitary/unsafe conditions (i.e. structural concerns, pet waste and refuse)

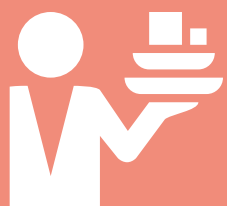
Nuisance Assessment Results:

- 6 either refused or were unable to be contacted
- 1 referred to the city
- 1 referred to the Vulnerable Adult Reporting Center
- 3 referred and accepted a MnChoices/Social Services assessment and/or case management
- Others were referred to resources and provided information such as Legal Aid, UCAP, Medical Assistance Application information, clutter/safety information, cleaning resources, home care, social services resources, etc.

Public Health is not involved with the activities of licensing, inspecting and educating food, beverage, and lodging establishments, manufactured home parks, campgrounds, pools, and/or spas. This is done by regional State Health Department staff and in some cases the cities themselves.



The Minnesota Department of Health (MDH) Food, Pools and Lodging update for McLeod County



Establishments
licensed by MDH

208

Plans reviewed
by MDH

6

Complaints
Investigated by
MDH

4

Inspections
conducted by MDH

191

Prepare for and respond to disasters & assist communities in recovery



Mental Health First Aid

Mental Health First Aid is an 8-hour course that gives people the skills to help someone who is developing a mental health problem or experiencing a mental health crisis. During 2017, over 50 Public Safety Professionals and Public Health professionals were trained in Mental Health First Aid in McLeod County.

Health Alert Network (HAN)

Over 2017, McLeod County Public Health participated in the HAN system. Public Health notifies local public health staff, hospitals and clinics when a health outbreak occurs in Minnesota by sending out alerts. 15 emergency HAN alerts were issued in 2017.



Continuous Training

In October 2017, Emergency Preparedness and Public Health Leadership participated in Emergency Operations Coordination (EOC) training. There were many other training opportunities for local emergency preparedness and public health staff held locally to ensure the proper training and procedures are in place if a disaster occurs.

Assure the quality and accessibility of health services

Dental Care Access



Dental providers for the medical assistance population continues to be an issue. While McLeod County has a higher percentage of dentists per population, there is a significant issue with dentists willing to take medical assistance as a form of payment.

Public Health has worked to bring in dental services to our residents to address the access issue. In 2017, we served around **140** children with dental varnishing services at 9 different locations throughout McLeod County schools. **Seventy six** patients were served through the Children's Dental Network that comes to our Glencoe office every 3 months and provides services like cleanings, fluoride, sealants, oral health education, exams, X-Rays, fillings, crowns, and/or extractions. Children's Dental Network serves ages 0-21 and pregnant mothers. Caring Hands Dental outreach Clinic saw patients in Hutchinson twice in 2017 serving **57** patients.



Patient Access to Services

Upon visiting a new Prime West Health enrollee in their home, the Prime West Public Health Nurse Case Manager identified that the individual was noncompliant with prescribed medication to treat Diabetes. The Public Health Nurse Case Manager attended medical appointments with the client and primary care physician, which resulted in the client and family agreeing to a Home Care referral for Skilled Nursing visits. It was identified that the client had significant cognitive deficits. The client wasn't able to demonstrate administering and storing insulin properly, which resulted in a medical emergency and acute hospitalization.

The Public Health Nurse Case Manager collaborated with the client's physician and hospital discharge planner for community placement that would meet the client's health care needs. In addition, the family received education and assistance through the guardianship process as they also recognized their loved one was in need of assistance to manage finances and ongoing medical care for a chronic condition. The family feared that without intervention, the client's health would continue to deteriorate.



Since the initial visit, the client has achieved improved health and is now receiving medical care in a Skilled Nursing Facility in a community closer to family, which was the client's preference. With the connection and collaboration by the Public Health Nurse Case Manager, the client's health outcome was optimized.

Core functions of Public Health

Assessment → “Knowing what needs to be done”

- Monitor health status to identify community health problems.
- Diagnose and investigate problems and health hazards in the community.

Policy Development & Planning → “Being part of the solution”

- Inform, educate and empower people about health issues.
- Mobilize community partnerships to identify and solve health problems.
- Develop policies and plans that support individual and community health efforts.

Assurance → “Making sure things happen”

- Enforce laws and regulations that protect health and ensure safety.
- Link people to needed health care services & assure the provision of health care when otherwise unavailable.
- Assure a competent public health and personal health care workforce.
- Evaluate effectiveness, accessibility and quality of personal and population-based health services.

Statute 145A - Local Public Health Act

The Local Public Health Act outlines the shared public health responsibilities of the state and local governments in Minnesota and establishes accountability for funding on statewide initiatives, provides guidelines for assessment and planning, requires documented progress toward the achievement of statewide goals, and assigns oversight of the statewide system to the commissioner of health.

The community health board is the legally recognized governing body for local public health in Minnesota. It is the only governmental entity eligible for funding under the Local Public Health Act grant. Community health boards have statutory responsibility under the Local Public Health Act. Community health boards work in partnership with the Minnesota Department of Health (MDH) to address the areas of public health responsibility.





Meeker-McLeod-Sibley Community Health Services awarded National Accreditation through the Public Health Accreditation Board

Meeker-McLeod-Sibley Community Health Services (MMS CHS) achieved national accreditation through the Public Health Accreditation Board (PHAB) on November 17th, 2017. The national accreditation program works to improve and protect the health of the public, by advancing and ultimately transforming the quality and performance of the nation's state, local, Tribal, and territorial public health departments.

MMS CHS is one of fewer than 200 health departments that have thus far achieved accreditation through PHAB since the organization launched in 2011. Another point of achievement for MMS CHS is that they are the first multi-county rural CHS to become accredited in Minnesota. However, hundreds of health departments across the country are preparing to seek accreditation through PHAB, the non-profit organization that administers the national public health accreditation program.

Public health departments play a critical role in protecting and improving the health of people and communities. In cities, towns, and states across the nation, health departments provide a range of services aimed at promoting healthy behaviors; preventing diseases and injuries; ensuring access to safe food, water, clean air, and life-saving immunizations; and preparing for and responding to public health emergencies.

Meeker, McLeod & Sibley Public Health Departments have solidified their relationship together to function as a unified staff. In addition, MMS CHS is viewed as a model for the state of Minnesota in establishing multi-county jurisdictions. MMS CHS has done a great job putting aside jurisdictional differences to improve the health of the community. Their relationships with community partners to leverage external resources help to further its mission into the community.

McLeod County Public Health Department Receives Breastfeeding Friendly Award



In September of 2017, McLeod County Public Health Department received a Breastfeeding Friendly Health Department Award from the Minnesota Department of Health for its contributions to the health of mothers and their babies.

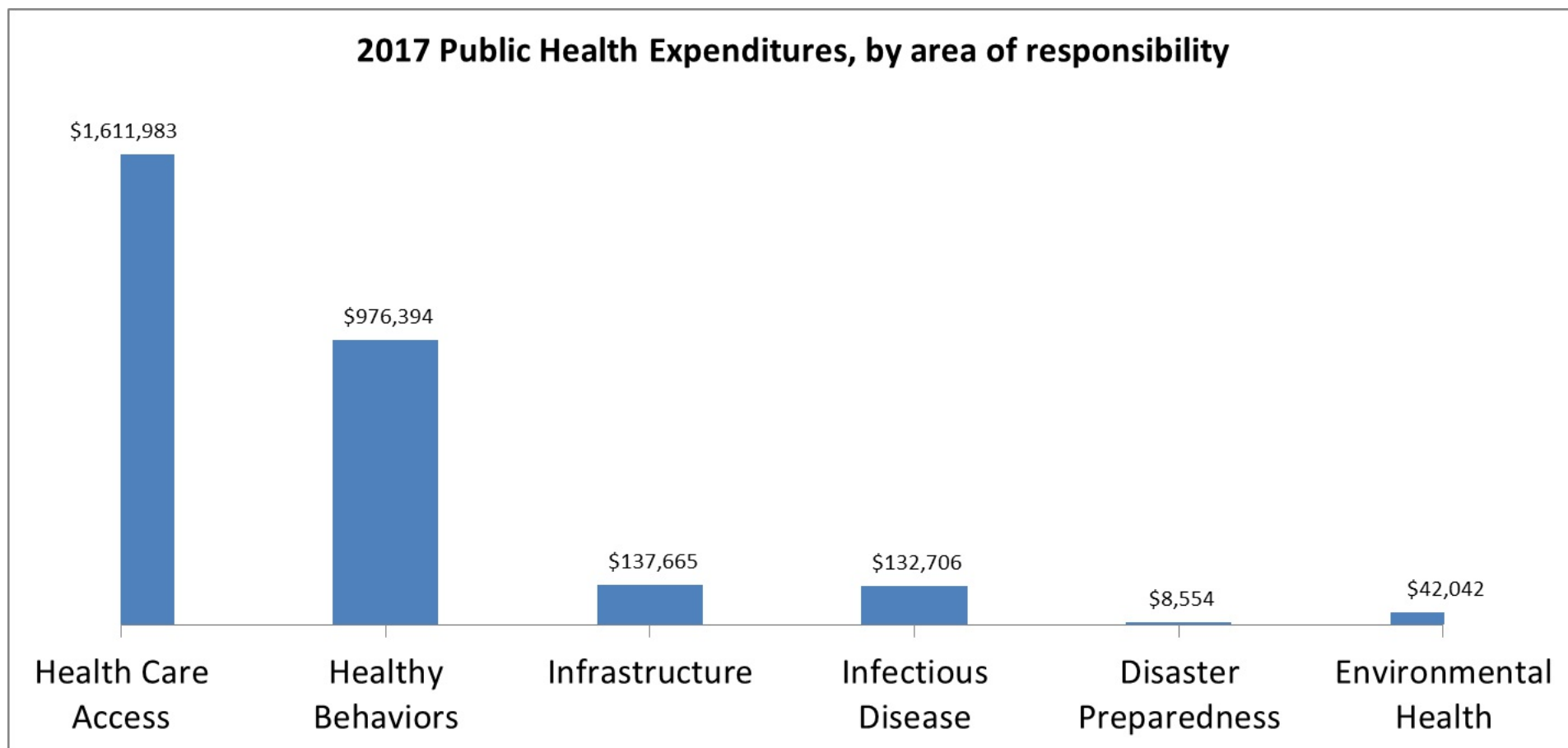
The designation acknowledges a county health department's commitment to acting as a model for the community by supporting healthy families and receiving the business benefits of supporting nursing mothers.

Support Group Created to Support Pregnant and Breastfeeding Mothers

The majority of new moms initiate nursing, but that number drops dramatically at the six month mark. The Moms Like You support group was created in November 2017 to support pregnant women and breastfeeding moms.



2017 Public Health Expenditures, by area of responsibility



McLeod County Public Health Advisory Board

Ron Shimanski, 1st District Commissioner
 Joseph Nagel, 5th District Commissioner
 Dr. Catherine McGinnis, MMS CHS Medical Consultant
 Chris Sonju, Community Member
 Susan DeMars, Community Member
 Sandy Haasl, Community Member
 Karen Gensmer, Community Member

McLeod County Public Health Director: Jennifer Hauser

McLeod County Board of Commissioners

Ron Shimanski, 1st District
 Doug Krueger, 2nd District
 Paul Wright, 3rd District
 Rich Pohlmeier, 4th District
 Joseph Nagel, 5th District

McLeod County Administrator: Pat Melvin