

**McLEOD COUNTY
BOARD OF COMMISSIONERS
PROPOSED MEETING AGENDA
OCTOBER 22, 2013**

1 9:00 CALL TO ORDER

PLEDGE OF ALLEGIANCE

2 9:03 CONSIDERATION OF AGENDA ITEMS *

3 9:08 CONSENT AGENDA*

- A. October 1, 2013 Meeting Minutes and Synopsis.
- B. October 8, 2013 Meeting Minutes and Synopsis.
- C. October 4, 2013 Auditor's Warrants.
- D. October 11, 2013 Auditor's Warrants.
- E. Approve quit claim deed for Daniel and Betty Werth for Parcel 23.050.4320 located at 440 Grove St, Hutchinson MN.
- F. Approve Confession of Judgment for Brent & Roxanne Burge (aka Roxanne Hamm) on Property ID 20.050.0960 in the City of Stewart.
- G. Approve a refund of \$513.84 for a fire abatement for parcel number 17.050.1360 owned by Joyce Paul who qualifies for a three month refund. The fire occurred September 13th 2013.

4 PAYMENT OF BILLS - COMMISSIONER WARRANT LIST *

5 PAYMENT OF BILLS - ADDITIONAL MISCELLANEOUS BILLS TO BE PAID BY AUDITORS WARRANTS *

6 9:15 ROAD AND BRIDGE – Maintenance Superintendent Elvis Voigt and Mechanic II Brian Schrupp

- A. Consider approval to purchase new sign truck chassis – Freightliner M2 106 single axis from Istate Truck Center (Inver Grove Heights, MN) for a total of \$74,344.15 plus applicable with funding coming from Highway budget. This is a state contract quote.*
- B. Consider approval to purchase new sign truck body – Maintainer Custom body from RBL Inc. (Minneapolis, MN) for a total of \$82,452 plus applicable with funding coming from Highway budget.*

Additional quote received: Aspen Equipment (Bloomington, MN) for \$83,085.

- C. Consider approval to purchase new sign truck crane - Maintainer H7024 from RBL Inc. (Minneapolis, MN) for a total of \$21,491 plus applicable with funding coming from Highway budget.*

Additional quote received: Aspen Equipment (Bloomington, MN) for \$21,257.

The existing unit has 10,000 hours on it, so it is to the point where the engine, transmission or hydraulic system could have major issues at any time. The utility/sign box, trailer hitch, ramp and crane tower were built in 1988 and were upgraded to a new chassis in 1999. These were all built by county staff and are not certified or have a weight rating so they do not meet current OSHA standards. The Highway Department is again having issues with the crane and it needs to be replaced. The new ramp will be wider, longer and also rise higher to reach the taller signs. The crane and ramp require outriggers which also takes more room on the truck. The box will also have storage for the larger signs that are now being used. The new equipment, which will meet all safety standards, will require a chassis with a longer wheelbase and a heavier gross vehicle weight rating than the current truck.

7 9:30 ASSESSOR – Assessor Sue Schulz

- A. Approve settlement offer with Rosemount – Parcel multiple.*

8 9:45 ENVIRONMENTAL SERVICES – Environmentalist Roger Berggren

- A. Consider approval of the FY 2014 & 2015 State of Minnesota Board of Water and Soil Resources Natural Resources Block Grant Agreement (NRBG) that provides state money to administer five different resource programs in the County.*

The NRBG money is needed to help offset the costs for certain programs that the county is in charge of administering. The County will receive each year \$82,764 from these grants with a required match of \$44,793 that can be either cash or in-kind services. The County has administered these programs and received the NRBG money for more than 20 years.

9 9:55 SHERIFF DEPARTMENT – Deputy Sheriff Tim Langenfeld

- A. Consider approval to auction a 2006 Dodge Charger, VIN 2B3KA43H66H4066966, at Fahey Auctioneers, Glencoe, MN.*

Vehicle's engine blew and replacement cost exceeds what we are likely to get at auction. Vehicle also has high mileage.

10 10:00 PROPOSED COURTHOUSE SECURITY/JAIL EXPANSION

- A. Consider approval of courthouse security/jail expansion based on input from September 17, 2013 public hearing.*

11 10:45 PUBLIC HEALTH – Agency Coordinator Kathy Nowak and Health Educator Kerry Ward

- A. Consider approval of McLeod County IT departments Service Level Agreement to be the host server for the Meeker-McLeod-Sibley Community Health Services new documentation system.*

McLeod County would be the host server for Meeker and Sibley County. See the attached Service Level Agreement, Agreement for Contracted Hosting Services,

Mobile Technology Device Checkout Form and Policy and Procedure for MMS
CHS Remote Access for Software Access.

- B. Consider hiring requests.*
- C. Presentation to Robin Sikkila, who was awarded the 1st Annual Jail Nurse of the Year Award.
- D. U of M Extension educational video on McLeod for Tomorrow.
- E. Notification of 2014 voluntary wellness premium credit info and resources.

12 11:00 PARKS – Director Al Koglin

- A. Consider acceptance of bid from Kahnke Brothers (Plato, MN) for delivery, planting and watering of 500 trees for a total cost of \$7,766 with funding coming from Legacy Grant through the DNR.*

Additional bid received: Prieve Landscaping (Hutchinson, MN) for \$11,350.

- B. Consider acceptance of bid from Mikolichek Plumbing & Heating (Winsted, MN) for replacement of 2 furnaces in the Country Diner at the Fairgrounds for a total cost of \$6,795 with funding coming from the fairgrounds budget.*

Additional bid received: Hutchinson Plumbing & Heating (Hutchinson, MN) for \$7,350.

13 11:05 BUILDING SERVICES – Building Maintenance Supervisor Wayne Rosenfeld & Central Services Coordinator Betty Werth

- A. Consider approval of quote for snow removal services for all McLeod County parking lots in Glencoe from Hometown Landscape & Design (Glencoe, MN) for a two year period beginning October, 2013 through May, 2015 for a total of \$1,785.*

Additional quote received for the service: Neubarth Lawn Care & Landscaping (Glencoe, MN) for \$1,920.

14 COUNTY ADMINISTRATION

- Review of Commissioners Calendar
- Commissioner reports of committee meetings attended since October 8, 2013.
- A. Set closed meeting to discuss 2014 negotiations.*
- B. Reschedule Truth in Taxation meeting scheduled for 12/5/13.*
- C. Consider approval to hire full-time Eligibility Worker in the Social Service Department (grade 15) due to resignation.*
- D. Consider approval to hire Hansen Gravel (Hutchinson, MN) to deliver and install a maximum of 1000 cubic yards of class 5 gravel to the northwest side of the eastern property adjacent to the Solid Waste facility for a cost of \$11,415.00. Second quote received: Hjerpe Contracting Inc. (Hutchinson, MN) \$17,425.76.*
- E. Award and present Bev Bonte, of Common Cup, with a check for \$1,436.85 from McLeod County Solid Waste's Penny per Pound Plastic Recycling Program.

- F. Award and present Deputy Patrick Geiken, of the McLeod County Sherriff's Department, with a check for \$1,436.85 from McLeod County Solid Waste's Penny per Pound Plastic Recycling Program.

OTHER

Open Forum
Press Relations

RECESS

Next board meeting November 5, 2013 at 9:00 a.m. in the County Boardroom.

**McLEOD COUNTY
BOARD OF COMMISSIONERS
PROPOSED MEETING MINUTES – October 1, 2013**

CALL TO ORDER

The regular meeting of the McLeod County Board of Commissioners was called to order at 9:00 a.m. by Chair Paul Wright in the County Board Room. Commissioners Shimanski, Terlinden and Christensen were present. Commissioner Nies had an excused absence. County Administrator Patrick Melvin, Administrative Assistant Donna Rickeman, County Auditor-Treasurer Cindy Schultz and County Attorney Michael Junge were also present.

PLEDGE OF ALLEGIANCE

At the request of the Board Chair, all present recited the Pledge of Allegiance.

CONSIDERATION OF AGENDA ITEMS

- A) Add under Administration item D; Consider adoption of Resolution 13-RB10-37 in Support of Funding for US Highway 212.
- B) Remove under Road and Bridge item A; Construction project updates.
- C) Remove under Road and Bridge item B; Road tour preview.

Terlinden/Shimanski carried unanimously to approve the agenda as revised.

CONSENT AGENDA

- A) September 17, 2013 Meeting Minutes and Synopsis.
- B) September 13, 2013 Auditor's Warrants.
- C) September 20, 2013 Auditor's Warrants.
- D) Approve renewal of 1 PRI circuit from NU-Telecom for 36 months for our phone service in Hutchinson at a cost of \$1072.45 per month with funding from the Central Services budget.

This contract is for the 1 PRI circuit, and block of 100 DID lines.

- E) Approve adding Tiffany Dougherty-Schooler and Jason Thiemann to the McLeod County Child Protection Team.
- F) Adopt Resolution 13-CB-36 Order the County Auditor-Treasurer to Place an Assessment on Drainage Systems.

Terlinden/Christensen motion carried unanimously to approve the consent agenda.

PAYMENT OF BILLS – COMMISSIONER WARRANT LIST

General Revenue	\$111,314.85
Road & Bridge	\$21,378.59
Solid Waste	\$56,143.44
County Ditch Fund	\$7,294.41

Shimanski/Christensen motion carried unanimously to approve payment of bills totaling \$196,131.29 from the aforementioned funds.

EXTENSION- 4-H Program Coordinator Jill Grams

- A) Jill Grams requested approval of a National 4-H week proclamation for October 6th through October 12th 2013.

Shimanski/Terlinden motion carried unanimously to approve of a National 4-H week proclamation for October 6th through October 12th 2013.

- B) Jill Grams presented the 2012-13 annual report. There are currently 290 youths participating in the county 4-H program along with 57 adult volunteers who provide nearly 5,000 hours of service annually that is valued at nearly \$113,000.

The nine 4-H clubs in McLeod County volunteer throughout the year to improve their communities, including assisting with the Crow River clean-up, constructing wood duck houses, and partnering with the backpack lunch program and McLeod County Social Services.

McLeod County 4-H also hosted a number of summer programs, including library programs, country school day camp, arts day for pottery and painting, a MinnAqua day camp, a junior master gardener program and an "Adventures in Agricultural" camp.

This year at the county fair there were 271 Cloverbud projects, 253 photography projects, 216 in crafts and fine arts, 117 in foods and nutrition and 73 in clothing and textiles. Also in the animal science projects there 48 exhibitors in the horse program, 26 dairy, 32 beef, 12 sheep, 18 swine, 12 poultry, 10 dog, 8 dairy goat, 11 market goat and 11 rabbits.

Each year at the county fair, there is a livestock auction at which businesses can vie to buy the ribbons won by the 4-H'ers. This year, the auction raised nearly \$15,000, part of which goes to the program and part to the individual 4-H'er.

COUNTY ADMINISTRATION

A) Consider September 24, 2013 Budget Committee Recommendations.

1. Revisit Smartphone and I-pad restrictions.

Recommendation: Allow supervisors and department heads to be eligible for the \$50 reimbursement for use of personal smartphones and direct departments to purchase laptops rather than I-pads and tablets when seeking mobility.

2. Mileage reimbursement method.

Recommendation: Continue with current practice of charging mileage without consideration to commute distance because of shared benefits.

Christensen/Shimanski motion carried unanimously to approve the September 24, 2013 Budget Committee Recommendations as outlined above.

B) Pat Melvin requested approval to hire full-time Office Support Specialist in Social Services (grade 9) due to resignation.

Kermit/Shimanski motion carried unanimously to approve hiring a full-time Office Support Specialist in Social Services (grade 9) due to resignation.

C) Pat Melvin requested adoption of Resolution 13-CB-38 Providing for an Opt-Out Policy for Employees on the County's Health Insurance Plan.

Currently all employees are required to carry a health insurance policy through the county. This becomes a potential issue for employees with health insurance options elsewhere (spouse, military benefits) who in some cases are dual covered and/or have two deductibles within a family. Also spouses working for the same county with children are required to carry separate family and single policies.

Financial implications of opting out would be the employee receives the difference between their health insurance premium and the county contribution (2013 rates – Bronze \$186.50/month, Silver \$76.50/month, HSA \$244.50/month). The county would save the premium (2013 rates – Bronze \$480/month, Silver \$685/month, HSA \$433/month).

Christensen/Shimanski motion carried unanimously to adopt Resolution 13-CB-38 Providing for an Opt-Out Policy for Employees on the County's Health Insurance Plan.

Shimanski/Christensen motion carried unanimously to recess at 10:30 a.m. until 9:00 a.m. October 8, 2013 in the County Boardroom.

ATTEST:

Paul Wright, Board Chair

Patrick Melvin, County Administrator

DRAFT

McLEOD COUNTY
BOARD OF COMMISSIONERS
SYNOPSIS – October 1, 2013

1. Commissioners Wright, Nies, Shimanski, Terlinden and Christensen were present.
2. Terlinden/Shimanski carried unanimously to approve the agenda as revised.
3. Terlinden/Christensen motion approved the consent agenda including September 17, 2013 Meeting Minutes and Synopsis; September 13, 2013 Auditor's Warrants; September 20, 2013 Auditor's Warrants; Approve renewal of 1 PRI circuit from NU-Telecom for 36 months for our phone service in Hutchinson at a cost of \$1072.45 per month with funding from the Central Services budget; Approve adding Tiffany Dougherty-Schooler and Jason Thiemann to the McLeod County Child Protection Team; Adopt Resolution 13-CB-36 Order the County Auditor-Treasurer to Place an Assessment on Drainage Systems.
4. Shimanski/Christensen motion carried unanimously to approve payment of bills totaling \$196,131.29 from the aforementioned funds.
5. Shimanski/Terlinden motion carried unanimously to approve of a National 4-H week proclamation for October 6th through October 12th 2013.
6. Christensen/Shimanski motion carried unanimously to approve the September 24, 2013 Budget Committee Recommendations as outlined above.
7. Kermit/Shimanski motion carried unanimously to approve hiring a full-time Office Support Specialist in Social Services (grade 9) due to resignation.
8. Christensen/Shimanski motion carried unanimously to adopt Resolution 13-CB-38 Providing for an Opt-Out Policy for Employees on the County's Health Insurance Plan.

Complete minutes are on file in the County Administrator's Office. The meeting recessed at 10:30 a.m. until October 8, 2013.

Attest:

Paul Wright, Board Chair

Patrick Melvin, County Administrator

**McLEOD COUNTY
BOARD OF COMMISSIONERS
PROPOSED MEETING MINUTES – October 8, 2013**

CALL TO ORDER

The regular meeting of the McLeod County Board of Commissioners was called to order at 9:00 a.m. by Chair Paul Wright in the County Board Room. Commissioners Nies Shimanski, Terlinden and Christensen were present. County Administrator Patrick Melvin, Administrative Assistant Donna Rickeman, County Auditor-Treasurer Cindy Schultz and County Attorney Michael Junge were also present.

PLEDGE OF ALLEGIANCE

At the request of the Board Chair, all present recited the Pledge of Allegiance.

CONSIDERATION OF AGENDA ITEMS

- A) Add under Administration item F; Consider approval of Dental Claims Service Administration Agreement.
- B) Add under Administration item G; Consider approval of Union Security Insurance Company Business Associate Agreement.
- C) Add under Administration item H; Consider approval of Self-Funded Dental Installation Application.

Nies/Christensen carried unanimously to approve the agenda as revised.

CONSENT AGENDA

- A) September 27, 2013 Auditor's Warrants.
- B) Approve Confession of Judgment for Veniamin Verstyak on Property ID 23.139.0020 in the City of Hutchinson.
- C) Approve Scott Haag's 2-lot preliminary plat to split an existing building site and create a 2-Lot plat to gain an additional building eligibility within the quarter-quarter and to be known as Fly Catcher Addition.

Nies/Terlinden motion carried unanimously to approve the consent agenda.

PAYMENT OF BILLS – COMMISSIONER WARRANT LIST

General Revenue	\$109,561.96
Road & Bridge	\$17,381.51
Solid Waste	\$30,462.83
County Ditch Fund	\$4,472.50

Terlinden/Shimanski motion carried unanimously to approve payment of bills totaling \$161,878.80 from the aforementioned funds.

ROAD AND BRIDGE – Highway Engineer John Brunkhorst

A) John Brunkhorst reported updates on the following construction projects:

- CR 78 Recon and CSAH 23 Rehab in Lester Prairie – CR 78 is closed up to CSAH 1. All but the final lift of bituminous pavement is placed with the exception of the west block of the project. The contractor will be working on final grading, curb and gutter, and paving the coming weeks on the west end of the project.
- CSAH 111 in Stewart – Utility work and curb and gutter installation is complete on CSAH 111. The contractor must still pave the final lift of bituminous.
- CSAH 2 Reconstruct in Silver Lake – Concrete paving is complete. In the coming weeks, utility companies will be finishing up work relocating power poles and the contractor will proceed with paving concrete driveways and installing sidewalk. The road is expected to be open late this week once pavement markings are installed with all remaining work being completed under traffic.
- CSAH 2 PCC Overlay South of Silver Lake – Concrete paving, shouldering, and driveway work are complete. The road is expected to be open late this week once pavement markings are installed. Some minor work and cleanup remains and will be completed under traffic.
- CSAH 115 & TH 15 Roundabout – The roundabout construction is substantially complete and now open to all traffic. The contractor still has minor work and cleanup to complete outside the traffic lanes. The mill and overlay south of Airport is also substantially complete.
- South Grade Road Bridge (Otter Lake) – The bridge is substantially complete and now open to all traffic. The contractor has some clean-up work remaining under the bridge and some minor work outside of the traffic lanes. All remaining work will be completed under traffic.
- CR 57 Culvert Replacement – Quotes to replace the failing culvert crossing on CR 57 were received and replacement is expected to begin soon. The crossing should not be closed for more than one week. This project was due to the flood this spring and will be funded with FEMA.
- Babcock Ave. Bank Restoration & Reinforcement – Quotes to restore and reinforce the eroded creek bank along Silver Creek on Babcock Ave. and construction should begin soon. There will be no road closure and all work is anticipated to be done off of the road. This project was due to the flood this spring and will be funded with FEMA.
- New Vehicle Storage Facility – The contractor has completed construction of the salt storage shed structure, but must still install aggregate base and pavement. The new vehicle storage building's concrete floor has been installed and the steel frame of the building is nearly complete with a

portion of the steel sheeting exterior installed. Anticipated occupancy date is around Thanksgiving.

- RR Gates & Signals on CR 25 in Brownton – The contractor is expected to install these this week. Work should last approximately 5 days. The work will be done under traffic.

John Brunkhorst also reported on the following completed construction projects:

- Seal Coat & Pavement Marking.
- CSAH 2 at the NCL – Joint project with Wright County.
- CSAH 7 Rehabilitation – CR 79 to NCL, northeast of Hutchinson.
- CSAH 15 Bridge – South Fork of Crow River.
- Penn Township Bridge – Leaf Avenue over High Island Creek.

- B) John Brunkhorst requested approval of an amendment to MnDOT agreement 00732 for SP 43-00115, signal and gate installation on TCW railroad over County State Aid Highway 25.

This amendment is needed due to a change in Federal law of the “Buy America” provisions. If steel or iron is used as part of the work, and the cost of that steel or iron is more than 0.1 percent of the total project cost or \$2,500 (whichever is greater), the company must use steel or iron melted or manufactured in the United States.

Nies/Shimanski motion carried unanimously to approve amendment to MnDOT agreement 00732 for SP 43-00115, signal and gate installation on TCW railroad over County State Aid Highway 25.

ASSESSOR – Assessor Sue Schulz

- A) Sue Schulz requested approval to reduce the building value of Telex property Parcel 22.050.3880 from \$993,400 to \$772,600 to reflect the condition.

Terlinden/Christensen motion carried unanimously to approve the reduction of the building value of Telex property Parcel 22.050.3880 from \$993,400 to \$772,600 and authorize Mike Junge to sign agreement on behalf of the board.

- B) Sue Schulz reviewed property values and taxes payable 2013 by classification of properties. Total tax on properties breaks down to Agricultural 20%, Residential 47%, Commercial & Industrial 29% and Apartments 4%.

PUBLIC HEALTH – Agency Coordinator Kathy Nowak and Public Health Nurse Jessica Schmidt

- A) Kathy Nowak requested approval of McLeod County Public Health Nursing Department Breastfeeding Policy.

The purpose of this policy is to ensure McLeod County Public Health meets the 10 steps for Successful Breastfeeding for Health Departments.

Nies/Shimanski motion carried unanimously to approve McLeod County Public Health Nursing Department Breastfeeding Policy.

- B) Kathy Nowak requested approval of the 2014 Contract for McLeod County Public Health Registered Nursing Services and McLeod Treatment Programs for Public Health to provide Registered Nursing Consultation.

Shimanski/Christensen motion carried unanimously to approve the 2014 Contract for McLeod County Public Health Registered Nursing Services and McLeod Treatment Programs for Public Health to provide Registered Nursing Consultation.

- C) Kathy Nowak gave an update on Tri-Star Assertive Community Treatment (ACT) which is an 18 county SW Mental Health Consortium with a Joint Power Board, which meets one time a year. Our Meeker, McLeod, Renville office is in Cosmos. The other 15 counties have private organizations providing the services and not a county.

Our Public Health office receives 5% of the cost of hiring the nurse which totals to about \$400/month or last year was \$4100/year. This does not cover any additional administrative time.

McLeod County presently has one nurse hired for the ACT team and the other nurse is a state employee. This McLeod County employee has turned in her resignation of October 24th. All of the state employees need to be replaced with local staff by June of 2014. Presently the nurses use each other for consultation and also have a psychiatrist on call. McLeod County Public Health does not want to supervise or be on call for the 2 ACT nurse as they are not qualified to be answering medical questions regarding these Severely and Persistently Mentally Ill (SPMI), high risk clients that are on many psychotropic drugs which interact with each other. These nurses cannot be employed by SS as they are performing skilled nursing functions and need to have nurse supervision.

- D) Kathy Nowak notified the board that Robin Sikkila received an award for 1st Annual Jail Nurse of the Year.
- E) Kathy Nowak notified the board of the 6th Annual MN Breastfeeding Coalition Statewide Meeting to be held in Glencoe at First Evangelical Lutheran Church on October 11th 2013.

- F) Discussion on Minnesota Department of Health policy changes that will override county mileage and meals re-imbusement policies was tabled for further investigation.

PLANNING AND ZONNING- Administrator Larry Gasow

- A) Larry Gasow requested approval of preliminary plat for Riverside Assembly of God Church in order to combine four existing lots into one lot, to be known as Riverside Church Addition.

This preliminary plat is located in Section 5 of Acoma Township, 12.96 acres, Lots 5, 7, 8 & 9 Bachman's First Addition.

Acoma Township requested to the Hutchinson Joint Planning Board that if any future construction, additional impervious area or any on-site drainage changes be made that Acoma Town Board shall be consulted in order to alleviate or disperse additional run off from entering the township road ditch area to the east side.

The Hutchinson Joint Planning Board unanimously recommended approval at their meeting on September 18, 2013. The applicant was asked to provide proof by the Final Plat stage that the existing interior utility and drainage easements of Bachman's First Addition plat are not being used so that the McLeod County Board by resolution can vacate those public easements.

Nies/Christensen motion carried unanimously to approve preliminary plat for Riverside Assembly of God Church in order to combine four existing lots into one lot, to be known as Riverside Church Addition.

AUDITOR -TREASURER – Auditor-Treasurer Cindy Schultz

- A) Cindy Schultz requested approval to award the sale of property located at 440 Grove St (Hutchinson, MN) to Daniel and Betty Werth for \$25,000.

Terlinden/Shimanski motion carried unanimously to approve the sale of property located at 440 Grove St (Hutchinson, MN) to Daniel and Betty Werth for \$25,000.

- B) Cindy Schultz requested approval to set the terms for the sale of tax forfeited land.

Public Sales: Basic Sale Price

- All parcels are offered at public auction and sold to the highest bidder. The minimum bid acceptable is the basic sale price, which is shown on the list of tax-forfeited land. The basic sale price is equal to the appraised value or the appraised value plus any extra charges for special assessments levied after forfeiture.

Extra Fees and Costs: In addition to the basic Sale Price

- A 3% surcharge of the total sale price for the state assurance account, a state deed fee of \$25.00, a \$46.00 filing fee and a state deed tax of .0033 of the sale price with a minimum of \$1.65 will be collected at the time of the sale.

Payment Terms

- Day of sale full payment cash, money order, or cashier's check.

Special Assessments: Levied Before and After Forfeiture

- The balance of any special assessments which were levied before forfeiture and cancelled at forfeiture and which exceed the amount of the basic sale price may be reassessed by the municipality. These special assessments are shown on the list of tax-forfeited land under the column entitled "Assessments before Forfeiture".
- Any special assessments, which were levied after forfeiture and certified to the county auditor have been added to the appraised value and must be paid by the purchaser as part of the basic sale price. These special assessments are shown on the list of tax-forfeited land under the column entitled "Assessments after Forfeiture".

Conditions: Restrictions on the Use of the Properties

- Sales are subject to the following restrictions on the use of the properties: existing leases, easements obtained by a governmental subdivision or state agency for a public purpose, building codes, declaration of covenants, and zoning laws, all sales are final with no refunds or exchanges allowed, and the appraised value does not represent a basis for future taxes.

Private Sales: Parcels not Sold at Public Auction

- Any parcel not sold at a public sale may be purchased after the public sale by paying the basic sale price. The basic sale price cannot be changed until the parcel is reappraised, republished, and again offered at a later public sale.

Title: Proof of Ownership

- The buyer will receive a receipt at the time of the sale. The Department of Revenue will issue a state deed.

Shimanski/Nies motion carried unanimously to approve the terms for the sale of tax forfeited land.

- C) Cindy Schultz presented recommendations to the County Board for setting the basic sale price on tax forfeited land.

**LIST OF TAX-FORFEITED LAND FOR PUBLIC SALE #170
2013**

MUNICIPALITY ADDRESS/ LEGAL DESCRIPTION	Parcel ID Number	Appraised Value	Assessments After Forfeiture	Sale Price	Basic Sale Price	Assessments Before Forfeiture
TOWN OF ACOMA Sect-03 Twp-117 Range-030 .19 AC OF GOVT LOT 7	01.003.0675 Land	\$ 1,100.00	\$0.00	\$1,100.00	\$1,100.00	\$0.00
TOWN OF COLLINS Sect-32 Twp-115 Range-030 50' X 1320' OF NW 1/4 SW 1/4 S OF RR	03.032.1250 Land	\$ 7,300.00	\$0.00	\$1,000.00	\$1,000.00	\$0.00
TOWN OF HASSAN VALLEY Sect-15 Twp-116 Range-029 RR R/W IN SW 1/4 SW 1/4 EX NE'LY 25' (TH #22 - .31 AC)	06.015.0650 Land	\$ 100.00	\$0.00	\$100.00	\$100.00	\$0.00
Sect-22 Twp-116 Range-029 All of the 100' wide corridor of former Chicago, Milwaukee, St. Paul & Pacific RR Co. in NE1/4 SE1/4 ex NE'ly 25'	06.022.1150 Land	\$ 2,000.00	\$0.00	\$2,000.00	\$2,000.00	\$0.00
Sect-22 Twp-116 Range-029 RR R/W IN N 1/2 NW 1/4 EX NE'LY 25' (TH #22 - 2.02 AC)	06.022.1600 Land	\$ 4,300.00	\$0.00	\$4,300.00	\$4,300.00	\$0.00
Sect-25 Twp-116 Range-029 All of the 100' wide corridor of former Chicago, Milwaukee, St. Paul & Pacific RR Co. in SE1/4 SW1/4	06.025.0575 Land	\$ 1,500.00	\$0.00	\$1,500.00	\$1,500.00	\$0.00
Sect-26 Twp-116 Range-029 3.24 AC NW 1/4 NE 1/4 (FORMER RR R/W) (TH #22-.91 AC)	06.026.1100 Land	\$ 9,300.00	\$0.00	\$3,000.00	\$3,000.00	\$0.00

TOWN OF HELEN 50' X 683' S 1/4 NW 1/4 NW 1/4	07.014.0950 Land	\$ 3,700.00	\$0.00	\$500.00	\$500.00	\$0.00
TOWN OF BROWNTON Block-005 LOT 9 EX E 30' Town of Brownton	16.050.0320 Land	\$ 1,000.00	\$0.00	\$1.00	\$1.00	\$0.00
Lot-006 Block-014 Town of Brownton Address: 129 4th Ave N Brownton, MN	16.050.0790 Commercial Building	\$ 35,600.00	\$347.23	\$1.77	\$349.00	\$0.00
Block-005 LOT 8 & N 1/2 LOT 9 Town of Lake Addie Address: 142 6th Ave N Brownton, MN	16.056.0370 House	\$ 29,100.00	\$760.45	\$1.55	\$762.00	\$0.00
Lot-007 Block-001 AP NW NW 32-115-28 Inc Tadsens Address: 211 Division St Brownton, MN	16.068.0080 House	\$ 40,600.00	\$2,041.94	\$1.06	\$2,043.00	\$0.00
CITY OF PLATO Sect-14 Twp-115 Range-027 50' X 628' of Gov't Lot 2	18.014.1750 Building	\$ 4,800.00	\$0.00	\$4,800.00	\$4,800.00	\$0.00
Lot 14-15-16 Block-002 Town of Plato	18.050.0200 Building	\$ 20,000.00	\$3,190.34	\$1.66	\$3,192.00	\$0.00
Lots 17 & 18 Ex N 44' Block-002 Town of Plato	18.050.0220 Land	\$ 16,300.00	\$0.00	\$2,500.00	\$2,500.00	\$0.00
CITY OF SILVER LAKE Lot 1 S of Hwy Block-002 Chalupsky's Addition	19.076.0100 Land	\$ 4,600.00	\$0.00	\$1.00	\$1.00	\$0.00
CITY OF STEWART Lot-006 Block-001 Town of Stewart Address: 731 Herbert St Stewart, MN	20.050.0040 Garage	\$ 6,700.00	\$3,024.64	\$1.36	\$3,026.00	\$0.00

CITY OF STEWART – cont.						
Lot-001 Block-015 & Vac Main St Town of Stewart Address: 731 Herbert St Stewart, MN	20.050.0960 House	\$ 32,400.00	\$ 1,306.40	\$ 1,193.60	\$ 2,500.00	\$ 780.00
Lot-003 Block-021 Town of Stewart Address: 820 Powers St Stewart, MN	20.050.1330 Commercial Building	\$ 31,300.00	\$888.31	\$1.69	\$890.00	\$0.00
Lot-012 Block-023 Town of Stewart Address: 901 South St Stewart, MN	20.050.1600 Commercial Building	\$ 27,300.00	\$0.00	\$3,000.00	\$3,000.00	\$0.00
Lot 4 & Lot 5 Ex S 28' Forcier's Add Address: 340 Grove St Stewart, MN	20.065.0050 House	\$ 31,700.00	\$40.00	\$2,460.00	\$2,500.00	\$0.00
CITY OF WINSTED						
Lot 1 Meadowbrook Addition	21.099.0010 Land	\$ 1,100.00	\$0.00	\$1.00	\$1.00	\$0.00
Lot-005 Block-002 Winsted on the Lake Fifth Add	21.122.0070 Land	\$ 5,200.00	\$133.50	\$866.50	\$1,000.00	\$0.00
Lot-006 Block-002 Winsted on the Lake Fifth Add	21.122.0080 Land	\$ 5,200.00	\$133.50	\$866.50	\$1,000.00	\$0.00
Lot-007 Block-002 Winsted on the Lake Fifth Add	21.122.0090 Land	\$ 5,200.00	\$133.50	\$866.50	\$1,000.00	\$0.00
Lot-008 Block-002 Winsted on the Lake Fifth Add	21.122.0100 Land	\$ 5,200.00	\$133.50	\$866.50	\$1,000.00	\$0.00
Lot-009 Block-002 Winsted on the Lake Fifth Add	21.122.0110 Land	\$ 5,200.00	\$133.50	\$866.50	\$1,000.00	\$0.00
Lot-026 Block-002 Winsted on the Lake Fifth Add	21.122.0280 Land	\$ 5,200.00	\$133.50	\$866.50	\$1,000.00	\$0.00

CITY OF WINSTED – cont.						
Lot-027 Block-002 Winsted on the Lake Fifth Add	21.122.0290 Land	\$ 5,200.00	\$133.50	\$866.50	\$1,000.00	\$0.00
Lot-028 Block-002 Winsted on the Lake Fifth Add	21.122.0300 Land	\$ 5,200.00	\$133.50	\$866.50	\$1,000.00	\$0.00
Lot-029 Block-002 Winsted on the Lake Fifth Add	21.122.0310 Land	\$ 5,200.00	\$133.50	\$866.50	\$1,000.00	\$0.00
Lot-030 Block-002 Winsted on the Lake Fifth Add	21.122.0320 Land	\$ 5,200.00	\$133.50	\$866.50	\$1,000.00	\$0.00
CITY OF GLENCOE						
20' X 280.5' of Blk 47 5,610 Sq Ft Town of Glencoe	22.050.2775 Land	\$ 15,000.00	\$0.00	\$200.00	\$200.00	\$0.00
20' X 280.5' of Blk 48 5,610 Sq Ft Town of Glencoe	22.050.2815 Land	\$ 15,000.00	\$0.00	\$200.00	\$200.00	\$0.00
20' X 60' & 50' X 220.5' of Blk 49 12,225 Sq Ft Town of Glencoe	22.050.2845 Land	\$ 42,400.00	\$0.00	\$400.00	\$400.00	\$0.00
50' X 280.5' of Blk 50 14,025 Sq Ft Town of Glencoe	22.050.2895 Land	\$ 37,600.00	\$0.00	\$400.00	\$400.00	\$0.00
50' X 280.5' OF Blk 51 14,025 Sq Ft Town of Glencoe	22.050.2935 Land	\$ 37,600.00	\$0.00	\$400.00	\$400.00	\$0.00
30' X 66' OF Blk 57 1,980 Sq Ft Town of Glencoe	22.050.3255 Land	\$ 12,700.00	\$0.00	\$1.00	\$1.00	\$0.00
CITY OF HUTCHINSON						
Lot-004 Block-026 South Half, Hutchinson Address: 234 Jefferson St SE Hutchinson, MN	23.050.2080 House	\$ 55,300.00	\$0.00	\$1.00	\$1.00	\$45.84

CITY OF HUTCHINSON – cont.						
Center 47.83' of S 180' of Lot 9 Block-004 North Half, Hutchinson Address: 141 5th Ave NE Hutchinson, MN	23.056.0520 House	\$ 19,700.00	\$550.36	\$1.64	\$552.00	\$0.00
Outlot A Mac's Bluff Add	23.094.0010 Land	\$ 4,800.00	\$0.00	\$1.00	\$1.00	\$0.00
Lot-002 Park Sub	23.142.0020 Land	\$ 38,000.00	\$92.74	\$0.26	\$93.00	\$0.00
S 2' of Lot 1 Block-002 McDonald's 6th Add	23.362.0095 Land	\$ 2,200.00	\$107.50	\$0.50	\$108.00	\$0.00
Outlot A Town & Country Estates	23.386.0010 Land	\$ 1,500.00	\$0.00	\$1.00	\$1.00	\$0.00
Sect-12 Twp-116 Range-030 Part of Lot 1 Block-001 Ravenwood	23.432.0010 Land	\$ 21,000.00	\$5,026.50	\$4,973.50	\$10,000.00	\$22,536.24
Sect-10 Twp-116 Range-030 Lot-003 Block-001 Island View Heights 4th Add	23.435.0030 Land	\$ 10,000.00	\$82.28	\$1,917.72	\$2,000.00	\$0.00
Sect-10 Twp-116 Range-030 Lot-004 Block-001 Island View Heights 4th Add	23.435.0040 Land	\$ 10,000.00	\$82.28	\$1,917.72	\$2,000.00	\$0.00
Sect-10 Twp-116 Range-030 Lot-005 Block-001 Island View Heights 4th Add	23.435.0050 Land	\$ 10,000.00	\$82.28	\$1,917.72	\$2,000.00	\$0.00
Sect-10 Twp-116 Range-030 Lot-006 Block-001 Island View Heights 4th Add	23.435.0060 Land	\$ 10,000.00	\$82.28	\$1,917.72	\$2,000.00	\$0.00
Sect-10 Twp-116 Range-030 Lot-007 Block-001 Island View Heights 4th Add	23.435.0070 Land	\$ 10,000.00	\$82.28	\$1,917.72	\$2,000.00	\$0.00

CITY OF HUTCHINSON – cont.						
Sect-10 Twp-116 Range-030 Lot-008 Block-001 Island View Heights 4th Add	23.435.0080 Land	\$ 10,000.00	\$82.28	\$1,917.72	\$2,000.00	\$0.00
Sect-10 Twp-116 Range-030 Lot-009 Block-001 Island View Heights 4th Add	23.435.0090 Land	\$ 10,000.00	\$82.28	\$1,917.72	\$2,000.00	\$0.00
Sect-10 Twp-116 Range-030 Lot-010 Block-001 Island View Heights 4th Add	23.435.0100 Land	\$ 10,000.00	\$82.28	\$1,917.72	\$2,000.00	\$0.00
Sect-10 Twp-116 Range-030 Lot-013 Block-001 Island View Heights 4th Add	23.435.0130 Land	\$ 10,000.00	\$82.28	\$1,917.72	\$2,000.00	\$0.00
Sect-10 Twp-116 Range-030 Lot-014 Block-001 Island View Heights 4th Add	23.435.0140 Land	\$ 10,000.00	\$82.28	\$1,917.72	\$2,000.00	\$0.00
Sect-10 Twp-116 Range-030 Lot-019 Block-001 Island View Heights 4th Add	23.435.0190 Land	\$ 10,000.00	\$82.28	\$1,917.72	\$2,000.00	\$0.00
Sect-10 Twp-116 Range-030 Lot-020 Block-001 Island View Heights 4th Add	23.435.0200 Land	\$ 10,000.00	\$82.28	\$1,917.72	\$2,000.00	\$0.00
Lots 1 & 2 & Outlot B Block-002 Stearns Woods	23.447.0050 Land	\$ 26,600.00	\$25,442.28	\$1,157.72	\$26,600.00	\$0.00

Nies/Shimanski motion carried unanimously to approve the basic sale price on tax forfeited land.

D) Cindy Schultz requested approval to set tax forfeited land sale public auction of November 7, 2013 at 9:30 am at the North Complex.

Nies/Christensen motion carried unanimously to approve tax forfeited land sale public auction of November 7, 2013 at 9:30 am at the North Complex.

E) Cindy Schultz requested adoption of Resolution 13-CB-39 Sale of Tax Forfeited Land.

Shimanski/Nies motion carried unanimously to adopt Resolution 13-CB-39 Sale of Tax Forfeited Land.

COUNTY ADMINISTRATION

- A) Pat Melvin requested adoption of Resolution 13-RB11-40 to act as legal sponsor for the Buffalo Highlands Trail project.

Nies/Terlinden motion carried unanimously to adopt Resolution 13-RB11-40 to act as legal sponsor for the Buffalo Highlands Trail project.

- B) Pat Melvin requested approval of the restated Plan Document for Medical and Dependent Care Flexible Reimbursement Plans.

Our vendor, Total Administrative Services Corporation (TASC) has updated the document. We need a Plan Document in place to allow for the pre-tax benefit of the flex plans under our Cafeteria Plan.

Shimanski/Nies motion carried unanimously to approve the restated Plan Document for Medical and Dependent Care Flexible Reimbursement Plans.

- C) Levy workshop scheduled for Tuesday, October 29th 9:00 am at the North Complex.
- D) LR Planning workshop scheduled for Monday, October 21st 9:00 am in the Boardroom.
- E) Pat Melvin requested approval to hire full-time Maintenance Worker II in the Highway Department (grade 14) due to resignation.

Nies/Terlinden motion carried unanimously to approve hiring a full-time Maintenance Worker II in the Highway Department (grade 14) due to resignation.

- F) Pat Melvin reviewed the 2014 County Program Aid formula.
- G) Pat Melvin requested approval of Dental Claims Service Administration Agreement.

Nies/Christensen motion carried unanimously to approve the Dental Claims Service Administration Agreement.

- H) Pat Melvin requested approval of the Union Security Insurance Company Business Associate Agreement Self-Funded.

Nies/Terlinden motion carried unanimously to approve the Union Security Insurance Company Business Associate Agreement Self-Funded.

- I) Pat Melvin requested approval of the Self-Funded Dental Installation Application.

Nies/Shimanski motion carried unanimously to approve the Self-Funded Dental Installation Application.

Shimanski/Nies motion carried unanimously to recess at 11:27 a.m. until 9:00 a.m. October 22, 2013 in the County Boardroom.

ATTEST:

Paul Wright, Board Chair

Patrick Melvin, County Administrator

DRAFT

McLEOD COUNTY
BOARD OF COMMISSIONERS
SYNOPSIS – October 8, 2013

1. Commissioners Wright, Nies, Shimanski, Terlinden and Christensen were present.
2. Nies/Christensen carried unanimously to approve the agenda as revised.
3. Nies/Terlinden motion approved the consent agenda including September 27, 2013 Auditor's Warrants; Approve Confession of Judgment for Veniamin Verstyak on Property ID 23.139.0020 in the City of Hutchinson; Approve Scott Haag's 2-lot preliminary plat to split an existing building site and create a 2-Lot plat to gain an additional building eligibility within the quarter-quarter and to be known as Fly Catcher Addition.
4. Terlinden/Shimanski motion carried unanimously to approve payment of bills totaling \$161,878.80 from the aforementioned funds.
5. Nies/Shimanski motion carried unanimously to approve amendment to MnDOT agreement 00732 for SP 43-00115, signal and gate installation on TCW railroad over County State Aid Highway 25.
6. Terlinden/Christensen motion carried unanimously to approve the reduction of the building value of Telex property Parcel 22.050.3880 from \$993,400 to \$772,600 and authorize Mike Junge to sign agreement on behalf of the board.
7. Nies/Shimanski motion carried unanimously to approve McLeod County Public Health Nursing Department Breastfeeding Policy.
8. Shimanski/Christensen motion carried unanimously to approve the 2014 Contract for McLeod County Public Health Registered Nursing Services and McLeod Treatment Programs for Public Health to provide Registered Nursing Consultation.
9. Nies/Christensen motion carried unanimously to approve preliminary plat for Riverside Assembly of God Church in order to combine four existing lots into one lot, to be known as Riverside Church Addition.
10. Terlinden/Shimanski motion carried unanimously to approve the sale of property located at 440 Grove St (Hutchinson, MN) to Daniel and Betty Werth for \$25,000.
11. Shimanski/Nies motion carried unanimously to approve the terms for the sale of tax forfeited land.
12. Nies/Shimanski motion carried unanimously to approve the basic sale price on tax forfeited land.
13. Nies/Christensen motion carried unanimously to approve tax forfeited land sale public auction of November 7, 2013 at 9:30 am at the North Complex.
14. Shimanski/Nies motion carried unanimously to adopt Resolution 13-CB-39 Sale of Tax Forfeited Land.
15. Nies/Terlinden motion carried unanimously to adopt Resolution 13-RB11-40 to act as legal sponsor for the Buffalo Highlands Trail project.
16. Shimanski/Nies motion carried unanimously to approve the restated Plan Document for Medical and Dependent Care Flexible Reimbursement Plans.

- 17.** Nies/Terlinden motion carried unanimously to approve hiring a full-time Maintenance Worker II in the Highway Department (grade 14) due to resignation.
- 18.** Nies/Christensen motion carried unanimously to approve the Dental Claims Service Administration Agreement.
- 19.** Nies/Terlinden motion carried unanimously to approve the Union Security Insurance Company Business Associate Agreement Self-Funded.
- 20.** Nies/Shimanski motion carried unanimously to approve the Self-Funded Dental Installation Application.

Complete minutes are on file in the County Administrator's Office. The meeting recessed at 11:27 a.m. until October 22, 2013.

Attest:

Paul Wright, Board Chair

Patrick Melvin, County Administrator

***** McLeod County IFS *****



POOL
10/4/13 1:50PM

Audit List for Board AUDITOR'S VOUCHERS ENTRIES

Print List in Order By:	2	1 - Fund (Page Break by Fund)	Page Break By:	1	1 - Page Break by Fund
		2 - Department (Totals by Dept)			2 - Page Break by Dept
		3 - Vendor Number			
		4 - Vendor Name			

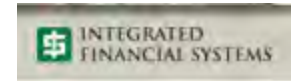
Explode Dist. Formulas Y

Paid on Behalf Of Name
on Audit List?: N

Type of Audit List: D D - Detailed Audit List
S - Condensed Audit List

Save Report Options?: N

***** McLeod County IFS *****



POOL
10/4/13 1:50PM
1 General Revenue Fund

Audit List for Board AUDITOR'S VOUCHERS ENTRIES

Vendor No.	Name Account/Formula	Rpt Accr	Amount	Warrant Description Service Dates	Invoice # Paid On Bhf #	Account/Formula Description On Behalf of Name
0	DEPT			...		
3	2811 CNA GROUP LONG TERM CARE 01-000-000-0000-2048		667.36	LONG TERM CARE GENERAL FUND 10/01/2013 10/31/2013	1300490	Long Term Care Payable
	2811 CNA GROUP LONG TERM CARE		667.36	1 Transactions		
8	3028 MINNESOTA CHILD SUPPORT PAYMENT 01-000-000-0000-2056		303.64	CHILD SUPPORT 09/08/2013 09/21/2013	001124208702	Child Support Garnishment Payable
10	01-000-000-0000-2056		106.59	CHILD SUPPORT 09/08/2013 09/21/2013	001436294701	Child Support Garnishment Payable
7	01-000-000-0000-2056		246.42	CHILD SUPPORT 09/08/2013 09/21/2013	001447664801	Child Support Garnishment Payable
9	01-000-000-0000-2056		42.79	CHILD SUPPORT 09/08/2013 09/21/2013	001499730601	Child Support Garnishment Payable
11	01-000-000-0000-2056		294.87	CHILD SUPPORT 09/08/2013 09/21/2013	001527027301	Child Support Garnishment Payable
	3028 MINNESOTA CHILD SUPPORT PAYMENT		994.31	5 Transactions		
15	1783 MINNESOTA DEPARTMENT OF REVENUE 01-000-000-0000-2055		86.40	WAGE LEVY ON AMY EUTIS		Garnishments Payable
	1783 MINNESOTA DEPARTMENT OF REVENUE		86.40	1 Transactions		
0	DEPT Total:		1,748.07	...	3 Vendors	7 Transactions
13	DEPT			Court Administrator's Office		
20	812 GAVIN OLSON WINTERS TWISS THIEMAN 01-013-000-0000-6272		26.25	COURT APPT KD/LA JV-13-146	20110305-001M	Court Appt Atty-Dep/Neg/Ter
22	01-013-000-0000-6272		15.00	COURT APPT AN/EP JV-12-104	20120233-000M	Court Appt Atty-Dep/Neg/Ter
21	01-013-000-0000-6272		127.50	COURT APPT AG/AR JV-12-253	20120419-000M	Court Appt Atty-Dep/Neg/Ter
19	01-013-000-0000-6272		101.25	COURT APPT LA/KJ/FS JV-13-18	20130055-000M	Court Appt Atty-Dep/Neg/Ter
23	01-013-000-0000-6272		270.00	COURT APPT RR/DS/DP JV-13-154	20130322-000M	Court Appt Atty-Dep/Neg/Ter
	812 GAVIN OLSON WINTERS TWISS THIEMAN		540.00	5 Transactions		
24	283 GLENCOE LAW OFFICE 01-013-000-0000-6273		108.75	COURT APPT DJ PR-13-1206	283	Court Appt Atty-Other
30	01-013-000-0000-6272		161.25	COURT APPT AG/ER JV-13-134	284	Court Appt Atty-Dep/Neg/Ter
29	01-013-000-0000-6272		236.25	COURT APPT RR/DS/DP JV-13-154	285	Court Appt Atty-Dep/Neg/Ter
28	01-013-000-0000-6272		56.25	COURT APPT RL/JS/DM/TL JV-13-1	286	Court Appt Atty-Dep/Neg/Ter

***** McLeod County IFS *****



POOL
10/4/13 1:50PM
1 General Revenue Fund

Audit List for Board AUDITOR'S VOUCHERS ENTRIES

Vendor	Name	Rpt	Warrant Description	Invoice #	Account/Formula Description
No.	Account/Formula	Accr	Service Dates	Paid On Bhf #	On Behalf of Name
27	01-013-000-0000-6272		COURT APPT JJ/EO/SS JV-13-91	287	Court Appt Atty-Dep/Neg/Ter
26	01-013-000-0000-6272		COURT APPT RD/JC/EC JV-13-42	288	Court Appt Atty-Dep/Neg/Ter
25	01-013-000-0000-6272		COURT APPT KL JV-45-108	289	Court Appt Atty-Dep/Neg/Ter
31	01-013-000-0000-6272		COURT APPT AM/DI JV-12-104	290	Court Appt Atty-Dep/Neg/Ter
283	GLENCOE LAW OFFICE		8 Transactions		
6440	MELCHERT HUBERT SJODIN PLLP				
32	01-013-000-0000-6272		COURT APPT KD/LA JV-13-146	109106	Court Appt Atty-Dep/Neg/Ter
33	01-013-000-0000-6272		COURT APPT KD/LA JV-13-146	109366	Court Appt Atty-Dep/Neg/Ter
34	01-013-000-0000-6272		COURT APPT KT JV-10-79	109641	Court Appt Atty-Dep/Neg/Ter
35	01-013-000-0000-6272		COURT APPT RH/LH JV-12-205	109650	Court Appt Atty-Dep/Neg/Ter
6440	MELCHERT HUBERT SJODIN PLLP		4 Transactions		
1774	MIDWEST CLINICAL PSYCHOLOGIST				
36	01-013-000-0000-6262		COURT APPT EVAL TH 43-JV-13-13	HOLTBTO0	Evaluations
1774	MIDWEST CLINICAL PSYCHOLOGIST		1 Transactions		
13	DEPT Total:		Court Administrator's Office	4 Vendors	18 Transactions
31	DEPT		County Administrator's Office		
1440	VISA				
39	01-031-000-0000-6336		MACA/MCHRMA CONF-RUTTGRS PM		Meals, Lodging, Parking & Miscellaneous
40	01-031-000-0000-6336		MACA/MCHRMA CONF-RUTTGRS MW		Meals, Lodging, Parking & Miscellaneous
41	01-031-000-0000-6336		AMC POLICY COMM-ARROWWOOD PM		Meals, Lodging, Parking & Miscellaneous
42	01-031-000-0000-6336		AMC POLICY COMM-ARROWWOOD RB		Meals, Lodging, Parking & Miscellaneous
1440	VISA		4 Transactions		
31	DEPT Total:		County Administrator's Office	1 Vendors	4 Transactions
75	DEPT		Central Services - Charge Backs		
379	WRIGHT EXPRESS FSC				
57	01-075-000-0000-6338		MOTOR POOL FUEL	34273055	Motor Pool Expenses
379	WRIGHT EXPRESS FSC		1 Transactions		
75	DEPT Total:		Central Services - Charge Backs	1 Vendors	1 Transactions
76	DEPT		Central Services - County Wide		
5433	DEX ONE				

***** McLeod County IFS *****



POOL
10/4/13 1:50PM
1 General Revenue Fund

Audit List for Board AUDITOR'S VOUCHERS ENTRIES

Vendor	Name	Rpt	Warrant Description	Invoice #	Account/Formula Description
No.	Account/Formula	Accr	Service Dates	Paid On Bhf #	On Behalf of Name
2	01-076-000-0000-6203		SEPTEMBER ADVERTISING CHARGE	300142598	Communications
5433	DEX ONE	19.00			
		19.00	1 Transactions		
5771	NU-TELECOM				
38	01-076-000-0000-6203	2,113.26	T1, EXT, PRI, SW B1	81018246	Communications
5771	NU-TELECOM	2,113.26			
			1 Transactions		
76	DEPT Total:	2,132.26	Central Services - County Wide	2 Vendors	2 Transactions
85	DEPT		Elections		
3014	SYNERGY GRAPHICS INC				
59	01-085-000-0000-6403	416.00	BALLOTS 1,600 SD 0424	2719	Printed Paper Supplies
60	01-085-000-0000-6403	2,593.50	BALLOTS 9975 SD 0423	2719	Printed Paper Supplies
61	01-085-000-0000-6403	26.00	AB 100 SD 0424	2719	Printed Paper Supplies
62	01-085-000-0000-6403	26.00	AB 100 SD 0423	2719	Printed Paper Supplies
63	01-085-000-0000-6403	6.50	CODING BALLOTS SD 0424	2719	Printed Paper Supplies
64	01-085-000-0000-6403	6.50	CODING BALLOTS SD 0423	2719	Printed Paper Supplies
65	01-085-000-0000-6403	0.52	SAMPLE BALLOTS SD 0424	2719	Printed Paper Supplies
66	01-085-000-0000-6403	0.52	SAMPLE BALLOTS SD 0423	2719	Printed Paper Supplies
67	01-085-000-0000-6403	55.00	BALLOT STYLE SD 0424	2719	Printed Paper Supplies
68	01-085-000-0000-6403	55.00	BALLOT STYLE SD 0423	2719	Printed Paper Supplies
69	01-085-000-0000-6403	52.40	FREIGHT SD 0424	2719	Printed Paper Supplies
70	01-085-000-0000-6403	52.41	FREIGHT SD 0423	2719	Printed Paper Supplies
3014	SYNERGY GRAPHICS INC	3,290.35			
			12 Transactions		
85	DEPT Total:	3,290.35	Elections	1 Vendors	12 Transactions
201	DEPT		County Sheriff's Office		
83	AT&T MOBILITY				
43	01-201-000-0000-6203	429.10	MCSO AIR SOURCE CARDS	287235616915	Communications
44	01-201-000-9003-6350	123.03	GLENCOE PD AIR SOURCE CARDS	287235616915	Other Services & Charges-Glencoe Compu
45	01-201-000-9004-6350	30.65	LP PD AIR SOURCE CARDS	287235616915	Other Services & Charges-Lp Computer
46	01-201-000-9005-6350	30.65	WINSTED PD AIR SOURCE CARDS	287235616915	Other Services & Charges-Winsted Compu
47	01-201-000-9006-6350	30.65	SL PD AIR SOURCE CARDS	287235616915	Other Services & Charges-Silver Lake
83	AT&T MOBILITY	644.08			
			5 Transactions		
5771	NU-TELECOM				
53	01-201-000-0000-6203	146.24	111-2290 SPEC ACC VOICE	81017975	Communications

***** McLeod County IFS *****



POOL
10/4/13 1:50PM
1 General Revenue Fund

Audit List for Board AUDITOR'S VOUCHERS ENTRIES

Vendor Name	Rpt	Warrant Description	Invoice #	Account/Formula Description
No. Account/Formula	Accr	Amount	Service Dates	On Behalf of Name
			Paid On Bhf #	
5771 NU-TELECOM		146.24	10/01/2013 10/31/2013 1 Transactions	
201 DEPT Total:		790.32	County Sheriff's Office	2 Vendors 6 Transactions
251 DEPT			County Jail	
51 5275 CARD SERVICES		1.15	J EDE-DISTILLED WATER	1359 Medical Aid To Prisoners
5275 CARD SERVICES		1.15	1 Transactions	
251 DEPT Total:		1.15	County Jail	1 Vendors 1 Transactions
485 DEPT			County Public Health Nursing	
56 295 STATE OF MN TREASURER		2,862.30	3RD QTR 2013 MNCARE TAX	Miscellaneous Charges
295 STATE OF MN TREASURER		2,862.30	1 Transactions	
485 DEPT Total:		2,862.30	County Public Health Nursing	1 Vendors 1 Transactions
520 DEPT			County Park's	
37 5771 NU-TELECOM		41.93	PIEPENBURG 587-2082	81018246 Communications
5771 NU-TELECOM		41.93	1 Transactions	
520 DEPT Total:		41.93	County Park's	1 Vendors 1 Transactions
1 Fund Total:		19,407.99	General Revenue Fund	53 Transactions

***** McLeod County IFS *****



POOL
10/4/13 1:50PM
3 Road & Bridge Fund

Audit List for Board AUDITOR'S VOUCHERS ENTRIES

Vendor No.	Name Account/Formula	Rpt Accr	Amount	Warrant Description Service Dates	Invoice # Paid On Bhf #	Account/Formula Description On Behalf of Name
0	DEPT			...		
4	2811 CNA GROUP LONG TERM CARE 03-000-000-0000-2048		152.07	LONG TERM CARE HWY FUND 10/01/2013 10/31/2013	1300490	Long Term Care Payable
	2811 CNA GROUP LONG TERM CARE		152.07	1 Transactions		
0	DEPT Total:		152.07	...	1 Vendors	1 Transactions
340	DEPT			Highway Equipment Maintenance		
49	32 CITY OF BROWNTON 03-340-000-0000-6253		82.65	ELECTRIC	1AVS000208	Electricity
50	03-340-000-0000-6257		53.95	WATER SEWER	1AVS000208	Sewer, Water And Garbage Removal
	32 CITY OF BROWNTON		136.60	2 Transactions		
55	1600 RAM GENERAL CONTRACTING INC 03-340-000-0000-6610		157,176.07	#3 CP 13-5500 NEW SHOP	5500-3-3314	Capital - Over \$5,000 (Fixed Assets)
	1600 RAM GENERAL CONTRACTING INC		157,176.07	1 Transactions		
340	DEPT Total:		157,312.67	Highway Equipment Maintenance	2 Vendors	3 Transactions
3	Fund Total:		157,464.74	Road & Bridge Fund		4 Transactions

***** McLeod County IFS *****



POOL
10/4/13 1:50PM
11 Human Service Fund

Audit List for Board AUDITOR'S VOUCHERS ENTRIES

Vendor	Name	Rpt	Warrant Description	Invoice #	Account/Formula Description
No.	Account/Formula	Accr	Service Dates	Paid On Bhf #	On Behalf of Name
420	DEPT		Income Maintenance		
5	2811 CNA GROUP LONG TERM CARE 11-420-000-0000-2048		180.17	LONG TERM CARE WELFARE FUND 10/01/2013 10/31/2013	1300490 Long Term Care Payable
	2811 CNA GROUP LONG TERM CARE		180.17	1 Transactions	
420	DEPT Total:		180.17	Income Maintenance	1 Vendors 1 Transactions
430	DEPT		Individual and Family Social Services		
6	2811 CNA GROUP LONG TERM CARE 11-430-000-0000-2048		103.02	LONG TERM CARE INC MAINT FUND 10/01/2013 10/31/2013	1300490 Long Term Care Payable
	2811 CNA GROUP LONG TERM CARE		103.02	1 Transactions	
12	3028 MINNESOTA CHILD SUPPORT PAYMENT 11-430-000-0000-2056		293.49	CHILD SUPPORT 09/08/2013 09/21/2013	001486828601 Child Support Garnishment Payable
	3028 MINNESOTA CHILD SUPPORT PAYMENT		293.49	1 Transactions	
430	DEPT Total:		396.51	Individual and Family Social Services	2 Vendors 2 Transactions
11	Fund Total:		576.68	Human Service Fund	3 Transactions

***** McLeod County IFS *****



POOL
10/4/13 1:50PM
25 Special Revenue Fund

Audit List for Board AUDITOR'S VOUCHERS ENTRIES

Vendor No.	Name Account/Formula	Rpt Accr	Amount	Warrant Description Service Dates	Invoice # Paid On Bhf #	Account/Formula Description On Behalf of Name
220	DEPT			Boat & Water Safety - Grant		
58	3028 MINNESOTA CHILD SUPPORT PAYMENT 25-220-000-0000-2056		138.10	CHILD SUPPORT 09/08/2013 09/21/2013	001499730601	Child Support Garnishment Payable
	3028 MINNESOTA CHILD SUPPORT PAYMENT		138.10		1 Transactions	
220	DEPT Total:		138.10	Boat & Water Safety - Grant	1 Vendors	1 Transactions
252	DEPT			Jail Canteen Account		
48	3510 BOB BARKER COMPANY INC 25-252-000-0000-6460		472.84	TOOTHPASTE/SHAVING CREAM	WEB000285472	Jail Supplies
	3510 BOB BARKER COMPANY INC		472.84		1 Transactions	
252	DEPT Total:		472.84	Jail Canteen Account	1 Vendors	1 Transactions
285	DEPT			E-911 System Maintenance - Grant		
52	5771 NU-TELECOM 25-285-000-0000-6203		628.79	587-0405 E-911 10/01/2013 10/31/2013	81018495	Communications - Telephone Equipment
	5771 NU-TELECOM		628.79		1 Transactions	
285	DEPT Total:		628.79	E-911 System Maintenance - Grant	1 Vendors	1 Transactions
618	DEPT			SSTS Grant		
1	3856 BORKA EXCAVATING 25-618-000-0000-6350		6,000.00	SEPTIC SYSTEM S MOY	08_21_13-2	Other Services & Charges
	3856 BORKA EXCAVATING		6,000.00		1 Transactions	
618	DEPT Total:		6,000.00	SSTS Grant	1 Vendors	1 Transactions
807	DEPT			Designated for Capital Assets		
54	1600 RAM GENERAL CONTRACTING INC 25-807-000-0000-6610		157,176.08	#3 CP 13-5500 NEW SHOP	5500-3-3314	Capital - Over \$5,000 (Fixed Assets)
	1600 RAM GENERAL CONTRACTING INC		157,176.08		1 Transactions	
807	DEPT Total:		157,176.08	Designated for Capital Assets	1 Vendors	1 Transactions

***** McLeod County IFS *****



POOL
 10/4/13 1:50PM
 25 Special Revenue Fund

Audit List for Board AUDITOR'S VOUCHERS ENTRIES

Vendor	<u>Name</u>	<u>Rpt</u>	<u>Warrant Description</u>	<u>Invoice #</u>	<u>Account/Formula Description</u>	
	<u>No.</u>	<u>Accr</u>	<u>Amount</u>	<u>Service Dates</u>	<u>Paid On Bhf #</u>	<u>On Behalf of Name</u>
25	Fund Total:		164,415.81	Special Revenue Fund		5 Transactions

***** McLeod County IFS *****



POOL
10/4/13 1:50PM
82 Community Health Service

Audit List for Board AUDITOR'S VOUCHERS ENTRIES

Vendor Name	Rpt	Warrant Description	Invoice #	Account/Formula Description	
No. Account/Formula	Accr	Amount	Service Dates	Paid On Bhf #	On Behalf of Name
853 DEPT			Local Public Health Grant		
718 BUERKLE/RHONDA					
18 82-853-000-0000-6245		126.97	CHS HEALTH CONFERENCE LODGING		Dues And Registration Fees
718 BUERKLE/RHONDA		126.97	1 Transactions		
853 DEPT Total:		126.97	Local Public Health Grant	1 Vendors	1 Transactions
862 DEPT			SHIP		
718 BUERKLE/RHONDA					
16 82-862-000-0000-6121		1,600.00	SHIP GRANT TIME		Personnel Wages
17 82-862-000-0000-6335		230.88	SHIP GRANT MILEAGE		Mileage Expense
718 BUERKLE/RHONDA		1,830.88	2 Transactions		
862 DEPT Total:		1,830.88	SHIP	1 Vendors	2 Transactions
82 Fund Total:		1,957.85	Community Health Service Fun		3 Transactions

***** McLeod County IFS *****



POOL
10/4/13 1:50PM
86 Trust and Agency Fund

Audit List for Board AUDITOR'S VOUCHERS ENTRIES

Vendor No.	Name Account/Formula	Rpt Accr	Amount	Warrant Description Service Dates	Invoice # Paid On Bhf #	Account/Formula Description On Behalf of Name
975	DEPT			DNR Clearing Account		
14	509 MINNESOTA DNR 86-975-000-0000-6850		619.00	DNR 09/24/2013 09/30/2013		Collections For Other Agencies
	509 MINNESOTA DNR		619.00		1 Transactions	
975	DEPT Total:		619.00	DNR Clearing Account	1 Vendors	1 Transactions
976	DEPT			Game & Fish Clearing Account		
13	509 MINNESOTA DNR 86-976-000-0000-6850		30.00	G & F 09/24/2013 09/30/2013		Collections For Other Agencies
	509 MINNESOTA DNR		30.00		1 Transactions	
976	DEPT Total:		30.00	Game & Fish Clearing Account	1 Vendors	1 Transactions
86	Fund Total:		649.00	Trust and Agency Fund		2 Transactions
	Final Total:		344,472.07	32 Vendors	70 Transactions	

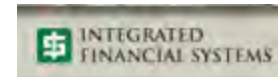
***** McLeod County IFS *****

Audit List for Board AUDITOR'S VOUCHERS ENTRIES



Recap by Fund	<u>Fund</u>	<u>AMOUNT</u>	<u>Name</u>	
	1	19,407.99	General Revenue Fund	
	3	157,464.74	Road & Bridge Fund	
	11	576.68	Human Service Fund	
	25	164,415.81	Special Revenue Fund	
	82	1,957.85	Community Health Service Fund	
	86	649.00	Trust and Agency Fund	
	All Funds	344,472.07	Total	Approved by,
			
			

***** McLeod County IFS *****



POOL
10/11/13 1:47PM

Audit List for Board AUDITOR'S VOUCHERS ENTRIES

Page 1

Print List in Order By: 2 1 - Fund (Page Break by Fund) Page Break By: 1 1 - Page Break by Fund
2 - Department (Totals by Dept) 2 - Page Break by Dept
3 - Vendor Number
4 - Vendor Name

Explode Dist. Formulas Y

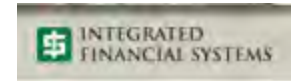
Paid on Behalf Of Name
on Audit List?: N

Type of Audit List: D D - Detailed Audit List
S - Condensed Audit List

Save Report Options?: N

POOL
 10/11/13 1:47PM
 1 General Revenue Fund

***** McLeod County IFS *****



Audit List for Board AUDITOR'S VOUCHERS ENTRIES

	<u>Vendor Name</u>	<u>Rpt</u>	<u>Warrant Description</u>	<u>Invoice #</u>	<u>Account/Formula Description</u>	
	<u>No. Account/Formula</u>	<u>Accr</u>	<u>Amount</u>	<u>Service Dates</u>	<u>Paid On Bhf #</u>	<u>On Behalf of Name</u>
5	DEPT			Board of County Commissioners		
	6412 VERIZON WIRELESS					
70	01-005-000-0000-6203		35.01	I PAD USE	9712569960	Communications
	6412 VERIZON WIRELESS		35.01	1 Transactions		
5	DEPT Total:		35.01	Board of County Commissioners	1 Vendors	1 Transactions
13	DEPT			Court Administrator's Office		
	5278 BRIAN SOUTHWELL LTD					
6	01-013-000-0000-6273		3,030.90	COURT APPT M MEYER P1-95-02		Court Appt Atty-Other
	5278 BRIAN SOUTHWELL LTD		3,030.90	1 Transactions		
	9555 CONKEL/JEANNE M V					
26	01-013-000-0000-6273		97.50	COURT APPT CJ	F2-03-50440	Court Appt Atty-Other
24	01-013-000-0000-6273		213.75	COURT APPT CG	F7-98-50787	Court Appt Atty-Other
27	01-013-000-0000-6273		86.25	COURT APPT JJ	FA-06-630	Court Appt Atty-Other
28	01-013-000-0000-6273		22.50	COURT APPT MW	FA-06-922	Court Appt Atty-Other
25	01-013-000-0000-6273		168.75	COURT APPT DH	FA-13-552	Court Appt Atty-Other
11	01-013-000-0000-6273		33.75	COURT APPT NO/BB	JV-13-103	Court Appt Atty-Other
12	01-013-000-0000-6273		138.75	COURT APPT AG/ER	JV-13-134	Court Appt Atty-Other
22	01-013-000-0000-6273		18.75	COURT APPT G ERPELDING	P8-99-71	Court Appt Atty-Other
13	01-013-000-0000-6273		18.75	COURT APPT C VIGREN	PR-06-563	Court Appt Atty-Other
15	01-013-000-0000-6273		18.75	COURT APPT L SCHEUBLE	PR-12-1372	Court Appt Atty-Other
23	01-013-000-0000-6273		11.25	COURT APPT C FORBES	PR-12-1914	Court Appt Atty-Other
16	01-013-000-0000-6273		112.50	COURT APPT M MADDEN	PR-13-1039	Court Appt Atty-Other
19	01-013-000-0000-6273		165.00	COURT APPT B ARTHUR	PR-13-1301	Court Appt Atty-Other
20	01-013-000-0000-6273		243.75	COURT APPT J DODD	PR-13-1474	Court Appt Atty-Other
18	01-013-000-0000-6273		18.75	COURT APPT A ALSLEBEN	PR-13-310	Court Appt Atty-Other
21	01-013-000-0000-6273		18.75	COURT APPT D DOLEZAL	PR-13-327	Court Appt Atty-Other
17	01-013-000-0000-6273		393.75	COURT APPT B KLIMA	PR-13-562	Court Appt Atty-Other
14	01-013-000-0000-6273		108.75	COURT APPT R SOMERVILLE	PR-13-629	Court Appt Atty-Other
	9555 CONKEL/JEANNE M V		1,890.00	18 Transactions		
	5485 DOHERTY SCHOOLER/TIFFANY					
52	01-013-000-0000-6272		547.50	COUER APPT AS/AS JV-12-14	151	Court Appt Atty-Dep/Neg/Ter
51	01-013-000-0000-6272		112.50	COUER APPT JV/JL JV-13-180	178	Court Appt Atty-Dep/Neg/Ter
	5485 DOHERTY SCHOOLER/TIFFANY		660.00	2 Transactions		
	812 GAVIN OLSON WINTERS TWISS THIEMAN					



Vendor	Name	Rpt	Warrant Description	Invoice #	Account/Formula Description
No.	Account/Formula	Accr	Service Dates	Paid On Bhf #	On Behalf of Name
31	01-013-000-0000-6273		COURT APPT AG F2-05-50488		Court Appt Atty-Other
33	01-013-000-0000-6273		COURT APPT AD FA-07-2483	20090595-000M	Court Appt Atty-Other
37	01-013-000-0000-6273		COURT APPT NBK JV-13-116	20120387-001M	Court Appt Atty-Other
36	01-013-000-0000-6273		COURT APPT MP/CA JV-13-29	20130068-000M	Court Appt Atty-Other
35	01-013-000-0000-6273		COURT APPT NO/BB JV-13-103	20130181-000M	Court Appt Atty-Other
32	01-013-000-0000-6273		COURT APPT N ROE PR-13-1119	20130326-000M	Court Appt Atty-Other
30	01-013-000-0000-6273		COURT APPT ER FA-13-1109	20130328-000M	Court Appt Atty-Other
34	01-013-000-0000-6273		COURT APPT MB/EB JV-13-155	20130331-000M	Court Appt Atty-Other
812	GAVIN OLSON WINTERS TWISS THIEMAN		8 Transactions		
377	THE LAW OFFICE OF TROY A SCOTTING				
47	01-013-000-0000-6273		COURT APPOINT RAM	F9-94-464	Court Appt Atty-Other
46	01-013-000-0000-6273		COURT APPOINT JLM	FA-08-1883	Court Appt Atty-Other
48	01-013-000-0000-6273		COURT APPOINT BBD	FA-10-734	Court Appt Atty-Other
45	01-013-000-0000-6273		COURT APPOINT JMU	FA-13-1105	Court Appt Atty-Other
42	01-013-000-0000-6272		COURT APPOINT AG/AR	JV-12-253	Court Appt Atty-Dep/Neg/Ter
43	01-013-000-0000-6272		COURT APPOINT JB/JL	JV-13-180	Court Appt Atty-Dep/Neg/Ter
44	01-013-000-0000-6272		COURT APPOINT RD/JC/EC	JV-13-42	Court Appt Atty-Dep/Neg/Ter
377	THE LAW OFFICE OF TROY A SCOTTING		7 Transactions		
13	DEPT Total:	6,812.85	Court Administrator's Office	5 Vendors	36 Transactions
65	DEPT		Information Systems Office		
6412	VERIZON WIRELESS				
61	01-065-000-0000-6203		CELL PHONE USE	9712569960	Communications
		195.57	09/03/2013 10/02/2013		
6412	VERIZON WIRELESS		1 Transactions		
65	DEPT Total:	195.57	Information Systems Office	1 Vendors	1 Transactions
76	DEPT		Central Services - County Wide		
11580	CENTURYLINK				
8	01-076-000-0000-6203		LONG DISTANCE	320439462	Communications
11580	CENTURYLINK		1 Transactions		
76	DEPT Total:	1,348.02	Central Services - County Wide	1 Vendors	1 Transactions
111	DEPT		Courthouse Building		

***** McLeod County IFS *****

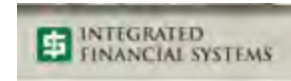


POOL
10/11/13 1:47PM
1 General Revenue Fund

Audit List for Board AUDITOR'S VOUCHERS ENTRIES

Vendor No.	Name Account/Formula	Rpt Accr	Amount	Warrant Description Service Dates	Invoice # Paid On Bhf #	Account/Formula Description On Behalf of Name
62	6412 VERIZON WIRELESS 01-111-000-0000-6203		68.62	CELL PHONE USE 09/03/2013 10/02/2013	9712569960	Communications
	6412 VERIZON WIRELESS		68.62	1 Transactions		
57	2038 WASTE MANAGEMENT OF WI MN 01-111-000-0000-6257		423.79	GARBAGE REMOVAL SEPT 2013	6576287-1593-7	Sewer, Water And Garbage
	2038 WASTE MANAGEMENT OF WI MN		423.79	1 Transactions		
111	DEPT Total:		492.41	Courthouse Building	2 Vendors	2 Transactions
112	DEPT			North Complex Building		
58	2038 WASTE MANAGEMENT OF WI MN 01-112-000-0000-6257		128.83	GARBAGE REMOVAL SEPT 2013	6576289-1593-3	Sewer, Water And Garbage
	2038 WASTE MANAGEMENT OF WI MN		128.83	1 Transactions		
112	DEPT Total:		128.83	North Complex Building	1 Vendors	1 Transactions
116	DEPT			Health And Human Services Building		
59	2038 WASTE MANAGEMENT OF WI MN 01-116-000-0000-6257		217.41	GARBAGE REMOVAL SEPT 2013	6576288-1593-5	Sewer, Water And Garbage Removal
	2038 WASTE MANAGEMENT OF WI MN		217.41	1 Transactions		
116	DEPT Total:		217.41	Health And Human Services Building	1 Vendors	1 Transactions
121	DEPT			Veteran Services Office		
63	6412 VERIZON WIRELESS 01-121-000-0000-6203		22.08	CELL PHONE USE 09/03/2013 10/02/2013	9712569960	Communications
	6412 VERIZON WIRELESS		22.08	1 Transactions		
121	DEPT Total:		22.08	Veteran Services Office	1 Vendors	1 Transactions
201	DEPT			County Sheriff's Office		
49	1782 NATIONAL CHILD PROTECTION TRAININ 01-201-204-0000-6360		30.00	ABUSE WENINAR J OLIVER 10/17/2013 10/17/2013		Training - Investigations
50	01-201-204-0000-6360		30.00	ABUSE WENINAR J FREDRICKSON		Training - Investigations

***** McLeod County IFS *****



POOL
10/11/13 1:47PM
1 General Revenue Fund

Audit List for Board AUDITOR'S VOUCHERS ENTRIES

Vendor No.	Name <u>Account/Formula</u>	Rpt <u>Accr</u>	Amount	Warrant Description <u>Service Dates</u>	Invoice # <u>Paid On Bhf #</u>	Account/Formula Description <u>On Behalf of Name</u>
1782	NATIONAL CHILD PROTECTION TRAININ		60.00	10/17/2013 10/17/2013	2 Transactions	
201	DEPT Total:		60.00	County Sheriff's Office	1 Vendors	2 Transactions
251	DEPT			County Jail		
64	6412 VERIZON WIRELESS 01-251-000-0000-6203		35.38	CELL PHONE USE 09/03/2013 10/02/2013	9712569960	Communications
	6412 VERIZON WIRELESS		35.38	1 Transactions		
251	DEPT Total:		35.38	County Jail	1 Vendors	1 Transactions
255	DEPT			County Court Services		
65	6412 VERIZON WIRELESS 01-255-000-0000-6203		35.56	CELL PHONE USE 09/03/2013 10/02/2013	9712569960	Communications
	6412 VERIZON WIRELESS		35.56	1 Transactions		
255	DEPT Total:		35.56	County Court Services	1 Vendors	1 Transactions
485	DEPT			County Public Health Nursing		
66	6412 VERIZON WIRELESS 01-485-000-0000-6203		53.29	CELL PHONE USE 09/03/2013 10/02/2013	9712569960	Communications
	6412 VERIZON WIRELESS		53.29	1 Transactions		
485	DEPT Total:		53.29	County Public Health Nursing	1 Vendors	1 Transactions
603	DEPT			County Extension		
73	651 COMMISSIONER OF REVENUE 01-603-000-0000-6351		7.00	SEPT 2013 USE TAX		After School Program
	651 COMMISSIONER OF REVENUE		7.00	1 Transactions		
603	DEPT Total:		7.00	County Extension	1 Vendors	1 Transactions
609	DEPT			Environmental Services Office		

***** McLeod County IFS *****



POOL
10/11/13 1:47PM
1 General Revenue Fund

Audit List for Board AUDITOR'S VOUCHERS ENTRIES

Vendor	Name	Rpt	Warrant Description	Invoice #	Account/Formula Description
No.	Account/Formula	Accr	Service Dates	Paid On Bhf #	On Behalf of Name
67	6412 VERIZON WIRELESS 01-609-000-0000-6203		CELL PHONE USE 09/03/2013 10/02/2013	9712569960	Communications
	6412 VERIZON WIRELESS			1 Transactions	
609	DEPT Total:		Environmental Services Office	1 Vendors	1 Transactions
1	Fund Total:		General Revenue Fund		51 Transactions

POOL
10/11/13 1:47PM
3 Road & Bridge Fund

***** McLeod County IFS *****



Audit List for Board AUDITOR'S VOUCHERS ENTRIES

Vendor No.	Name Account/Formula	Rpt Accr	Amount	Warrant Description Service Dates	Invoice # Paid On Bhf #	Account/Formula Description On Behalf of Name
310	DEPT			Highway Maintenance		
74	651 COMMISSIONER OF REVENUE 03-310-000-0000-6503		607.00	SEPT 2013 USE TAX		Traffic Signs & Post
	651 COMMISSIONER OF REVENUE		607.00		1 Transactions	
310	DEPT Total:		607.00	Highway Maintenance	1 Vendors	1 Transactions
320	DEPT			Highway Construction		
9	190 CITY OF LESTER PRAIRIE 03-320-000-0000-6265		12,046.85	CONST ENGINEERING JOB 0780	LP#5-12-078-01	Professional Services
10	03-320-000-0000-6643		133,853.89	CONSTRUCTION COSTS JOB 0780	LP#5-12-078-01	County Road Construction
	190 CITY OF LESTER PRAIRIE		145,900.74		2 Transactions	
75	651 COMMISSIONER OF REVENUE 03-320-000-0000-6501		5.00	SEPT 2013 USE TAX		Engineering & Surveying Supplies
	651 COMMISSIONER OF REVENUE		5.00		1 Transactions	
320	DEPT Total:		145,905.74	Highway Construction	2 Vendors	3 Transactions
340	DEPT			Highway Equipment Maintenance		
78	540 HUTCHINSON UTILITIES COMMISSION 03-340-000-0000-6253		142.71	ELECTRIC TEMP STORAGE	31021-045101	Electricity
79	03-340-000-0000-6255		35.61	GAS TEMP STORAGE	31021-045101	Natural Gas
	540 HUTCHINSON UTILITIES COMMISSION		178.32		2 Transactions	
340	DEPT Total:		178.32	Highway Equipment Maintenance	1 Vendors	2 Transactions
3	Fund Total:		146,691.06	Road & Bridge Fund		6 Transactions

***** McLeod County IFS *****



POOL
10/11/13 1:47PM
5 Solid Waste Fund

Audit List for Board AUDITOR'S VOUCHERS ENTRIES

Vendor No.	Name Account/Formula	Rpt Accr	Amount	Warrant Description Service Dates	Invoice # Paid On Bhf #	Account/Formula Description On Behalf of Name
391	DEPT			Solid Waste Tip Fee		
540	HUTCHINSON UTILITIES COMMISSION					
81	05-391-000-0000-6253		618.02	ELECTRIC 08/28/2013 09/27/2013	410076-027482	Electricity
84	05-391-000-0000-6255		15.55	GAS 08/28/2013 09/27/2013	410076-027482	Natural Gas
540	HUTCHINSON UTILITIES COMMISSION		633.57	2 Transactions		
391	DEPT Total:		633.57	Solid Waste Tip Fee	1 Vendors	2 Transactions
393	DEPT			Materials Recovery Facility		
516	DYMAX					
56	05-393-000-0000-6412		15.31	3RD QTR COMMERCIAL OCC-2013		Fiber Recovery
516	DYMAX		15.31	1 Transactions		
540	HUTCHINSON UTILITIES COMMISSION					
80	05-393-000-0000-6253		2,540.74	ELECTRIC 08/28/2013 09/27/2013	410076-027482	Electricity
83	05-393-000-0000-6255		63.95	GAS 08/28/2013 09/27/2013	410076-027482	Natural Gas
540	HUTCHINSON UTILITIES COMMISSION		2,604.69	2 Transactions		
4370	MCLEOD COUNTY ALUMINUM REDEMPT					
55	05-393-000-0000-6411		2,858.85	REPLENISH CHECKS 30668-30779 08/30/2013 09/24/2013		Aluminum Recovery
4370	MCLEOD COUNTY ALUMINUM REDEMPT		2,858.85	1 Transactions		
4170	WASTE MANAGEMENT OF WI MN					
87	05-393-000-0000-6269		129.69	ILLEGAL DUMP DISPOSAL	10549-1702-4	Contracts
4170	WASTE MANAGEMENT OF WI MN		129.69	1 Transactions		
393	DEPT Total:		5,608.54	Materials Recovery Facility	4 Vendors	5 Transactions
397	DEPT			Household Hazardous Waste		
540	HUTCHINSON UTILITIES COMMISSION					
82	05-397-000-0000-6253		274.68	ELECTRIC 08/28/2013 09/27/2013	410076-027482	Electricity
85	05-397-000-0000-6255		6.92	GAS	410076-027482	Natural Gas

***** McLeod County IFS *****



POOL
10/11/13 1:47PM
5 Solid Waste Fund

Audit List for Board AUDITOR'S VOUCHERS ENTRIES

Vendor	<u>Name</u>	<u>Rpt</u>	<u>Amount</u>	<u>Warrant Description</u>	<u>Invoice #</u>	<u>Account/Formula Description</u>
<u>No.</u>	<u>Account/Formula</u>	<u>Accr</u>		<u>Service Dates</u>	<u>Paid On Bhf #</u>	<u>On Behalf of Name</u>
540	HUTCHINSON UTILITIES COMMISSION		281.60	08/28/2013 09/27/2013	2	Transactions
397	DEPT Total:		281.60	Household Hazardous Waste	1 Vendors	2 Transactions
5	Fund Total:		6,523.71	Solid Waste Fund		9 Transactions

***** McLeod County IFS *****



POOL
10/11/13 1:47PM
11 Human Service Fund

Audit List for Board AUDITOR'S VOUCHERS ENTRIES

Vendor	Name	Rpt	Warrant Description	Invoice #	Account/Formula Description
No.	Account/Formula	Accr	Service Dates	Paid On Bhf #	On Behalf of Name
420	DEPT		Income Maintenance		
68	6412 VERIZON WIRELESS 11-420-600-0010-6203		CELL PHONE USE 09/03/2013 10/02/2013	9712569960	Communications/Postage
	6412 VERIZON WIRELESS		1 Transactions		
420	DEPT Total:		133.36	Income Maintenance	1 Vendors 1 Transactions
430	DEPT		Individual and Family Social Services		
69	6412 VERIZON WIRELESS 11-430-700-0010-6203		CELL PHONE USE 09/03/2013 10/02/2013	9712569960	Communications/Postage
	6412 VERIZON WIRELESS		200.03	1 Transactions	
430	DEPT Total:		200.03	Individual and Family Social Services	1 Vendors 1 Transactions
11	Fund Total:		333.39	Human Service Fund	2 Transactions

***** McLeod County IFS *****



POOL
10/11/13 1:47PM
25 Special Revenue Fund

Audit List for Board AUDITOR'S VOUCHERS ENTRIES

Vendor	Name	Rpt	Warrant Description	Invoice #	Account/Formula Description	
No.	Account/Formula	Accr	Amount	Service Dates	Paid On Bhf #	On Behalf of Name
15	DEPT		Law Library			
29	9492 EAGLE LEGAL SERVICE		60.00	LIBRABY SERVICES		Books
	25-015-000-0000-6451			07/01/2013 09/30/2013		
	9492 EAGLE LEGAL SERVICE		60.00		1 Transactions	
2	6 MATTHEW BENDER & CO INC					
	25-015-000-0000-6451		182.70	DUNN MN DIGEST 5E	50528068	Books
3	25-015-000-0000-6451		207.00	MN PIRSIG PLEADING REL #18	5069636X	Books
1	25-015-000-0000-6451		110.93	MN FAMILY LAW REL #49	50696378	Books
	6 MATTHEW BENDER & CO INC		500.63		3 Transactions	
54	358 WEST PAYMENT CENTER					
	25-015-000-0000-6451		224.97	MN REPORTER V 829	828081529	Books
53	25-015-000-0000-6451		2,084.68	WEST INFO CHARGES	828118198	Books
				09/01/2013 09/30/2013		
	358 WEST PAYMENT CENTER		2,309.65		2 Transactions	
15	DEPT Total:		2,870.28	Law Library	3 Vendors	6 Transactions
32	DEPT			McLeod For Tomorrow		
41	5900 REGENTS OF THE UNIVERSITY OF MINNE					
	25-032-000-0000-6350		2,322.50	MFT LEADERSHIP PROGRAM	0300010252	Leadership Program Expenses
	5900 REGENTS OF THE UNIVERSITY OF MINNE		2,322.50		1 Transactions	
32	DEPT Total:		2,322.50	McLeod For Tomorrow	1 Vendors	1 Transactions
220	DEPT			Boat & Water Safety - Grant		
76	651 COMMISSIONER OF REVENUE					
	25-220-000-0000-6350		7.00	SEPT 2013 USE TAX		Other Services & Charges
	651 COMMISSIONER OF REVENUE		7.00		1 Transactions	
220	DEPT Total:		7.00	Boat & Water Safety - Grant	1 Vendors	1 Transactions
223	DEPT			D.A.R.E. Program		
77	651 COMMISSIONER OF REVENUE					
	25-223-000-0000-6350		34.00	SEPT 2013 USE TAX		Other Services & Charges

***** McLeod County IFS *****



POOL
10/11/13 1:47PM
25 Special Revenue Fund

Audit List for Board AUDITOR'S VOUCHERS ENTRIES

Vendor	Name	Rpt	Warrant Description	Invoice #	Account/Formula Description	
No.	Account/Formula	Accr	Amount	Service Dates	Paid On Bhf #	On Behalf of Name
651	COMMISSIONER OF REVENUE		34.00	1 Transactions		
223	DEPT Total:		34.00	D.A.R.E. Program	1 Vendors	1 Transactions
252	DEPT			Jail Canteen Account		
5	3510 BOB BARKER COMPANY INC 25-252-000-0000-6460		108.83	SANDALS	WEB000206495	Jail Supplies
	3510 BOB BARKER COMPANY INC		108.83	1 Transactions		
40	5771 NU-TELECOM 25-252-000-0000-6460		94.28	CABLE 10/01/2013 10/31/2013	81016918	Jail Supplies
	5771 NU-TELECOM		94.28	1 Transactions		
252	DEPT Total:		203.11	Jail Canteen Account	2 Vendors	2 Transactions
285	DEPT			E-911 System Maintenance - Grant		
7	147 DEPARTMENT OF PUBLIC SAFETY 25-285-000-0000-6203		780.00	CJDN CONNECT 07/01/2013 09/30/2013	00000159389	Communications - Telephone Equipment
	147 DEPARTMENT OF PUBLIC SAFETY		780.00	1 Transactions		
285	DEPT Total:		780.00	E-911 System Maintenance - Grant	1 Vendors	1 Transactions
807	DEPT			Designated for Capital Assets		
4	719 BLUE EARTH COUNTY 25-807-000-0000-6610		3,632.48	REGIONAL LOGGER		Capital - Over \$5,000 (Fixed Assets)
	719 BLUE EARTH COUNTY		3,632.48	1 Transactions		
807	DEPT Total:		3,632.48	Designated for Capital Assets	1 Vendors	1 Transactions
25	Fund Total:		9,849.37	Special Revenue Fund		13 Transactions

***** McLeod County IFS *****



POOL
10/11/13 1:47PM
86 Trust and Agency Fund

Audit List for Board AUDITOR'S VOUCHERS ENTRIES

Vendor	Name	Rpt	Warrant Description	Invoice #	Account/Formula Description
No.	Account/Formula	Accr	Amount	Service Dates	On Behalf of Name
				Paid On Bhf #	
205	DEPT		Carry Conceal Permit		
60	3781 BUREAU OF CRIMINAL APPREHENSION		1,035.00	JULY-SEPTEMBER 2013	43-000038 Collections For Other Agencies
	3781 BUREAU OF CRIMINAL APPREHENSION		1,035.00	1 Transactions	
205	DEPT Total:		1,035.00	Carry Conceal Permit	1 Vendors 1 Transactions
833	DEPT			Mortgage Registry Tax	
99	1004 MINNESOTA DEPARTMENT OF REVENUE		31,549.91	SEPTEMBER MTG REG	Collections For Other Agencies
	1004 MINNESOTA DEPARTMENT OF REVENUE		31,549.91	1 Transactions	
833	DEPT Total:		31,549.91	Mortgage Registry Tax	1 Vendors 1 Transactions
834	DEPT			Deed Tax	
100	1004 MINNESOTA DEPARTMENT OF REVENUE		24,937.00	SEPTEMBER DEED TAX	Collections For Other Agencies
	1004 MINNESOTA DEPARTMENT OF REVENUE		24,937.00	1 Transactions	
834	DEPT Total:		24,937.00	Deed Tax	1 Vendors 1 Transactions
935	DEPT			Real Estate Assurance - Registered Land	
88	3411 COMMISSIONER OF FINANCE		198.00	SEPT REGISTERED LAND	Collections For Other Agencies
	3411 COMMISSIONER OF FINANCE		198.00	09/01/2013 09/30/2013 1 Transactions	
935	DEPT Total:		198.00	Real Estate Assurance - Registered Lar	1 Vendors 1 Transactions
938	DEPT			Well Certificates	
86	3442 MINNESOTA DEPARTMENT OF HEALTH		1,190.00	3RD QTR 2013 WELL DISCLOSURES	Collections For Other Agencies
	3442 MINNESOTA DEPARTMENT OF HEALTH		1,190.00	1 Transactions	
938	DEPT Total:		1,190.00	Well Certificates	1 Vendors 1 Transactions
939	DEPT			State Surcharge	

***** McLeod County IFS *****



POOL
10/11/13 1:47PM
86 Trust and Agency Fund

Audit List for Board AUDITOR'S VOUCHERS ENTRIES

Vendor	Name	Rpt	Warrant Description	Invoice #	Account/Formula Description
No.	Account/Formula	Accr	Amount	Service Dates	On Behalf of Name
				Paid On Bhf #	
89	3411 COMMISSIONER OF FINANCE 86-939-000-0000-6850		6,363.00	SEPT REGISTRARS FEES 09/01/2013 09/30/2013 1 Transactions	Collections For Other Agencies
939	DEPT Total:		6,363.00	State Surcharge	1 Vendors 1 Transactions
940	DEPT			Vital Records Surcharge - Birth & Death	
90	3411 COMMISSIONER OF FINANCE 86-940-000-0000-6850		2,144.00	SEPT BIRTH/DEATH SURCHARGE 09/01/2013 09/30/2013 1 Transactions	Collections For Other Agencies
940	DEPT Total:		2,144.00	Vital Records Surcharge - Birth & Deat	1 Vendors 1 Transactions
950	DEPT			Birth Record Surcharge	
91	3411 COMMISSIONER OF FINANCE 86-950-000-0000-6850		1,090.00	SEPT BIRTH RECCORD SURCHARGE 09/01/2013 09/30/2013 1 Transactions	Collections For Other Agencies
950	DEPT Total:		1,090.00	Birth Record Surcharge	1 Vendors 1 Transactions
952	DEPT			Children's Trust Fund Surcharge - Birth	
92	3411 COMMISSIONER OF FINANCE 86-952-000-0000-6850		237.00	SEPT CHILDRE SRCHG 09/01/2013 09/30/2013 1 Transactions	Collections For Other Agencies
952	DEPT Total:		237.00	Children's Trust Fund Surcharge - Birtl	1 Vendors 1 Transactions
954	DEPT			Marriage License	
93	3411 COMMISSIONER OF FINANCE 86-954-000-0000-6850		385.00	SEPT MARR LIC SRCHG 09/01/2013 09/30/2013	Collections For Other Agencies
94	86-954-000-0000-6850		51.00	SEPT MARR LIC SUPRVD VISIT 09/01/2013 09/30/2013	Collections For Other Agencies
95	86-954-000-0000-6850		34.00	SEPT MARR LIC/MN ENABLE	Collections For Other Agencies

***** McLeod County IFS *****



POOL
10/11/13 1:47PM
86 Trust and Agency Fund

Audit List for Board AUDITOR'S VOUCHERS ENTRIES

Vendor No.	Name Account/Formula	Rpt Accr	Amount	Warrant Description Service Dates	Invoice # Paid On Bhf #	Account/Formula Description On Behalf of Name
96	86-954-000-0000-6850		175.00	09/01/2013 09/30/2013 SEPT MARR LIC/DISPL HOME REG		Collections For Other Agencies
97	86-954-000-0000-6850		100.00	09/01/2013 09/30/2013 SEPT MARR LIC/HEALTHY MARR		Collections For Other Agencies
98	86-954-000-0000-6850		35.00	09/01/2013 09/30/2013 SEPT MARR LIC/CPUPLES ON BRINK		Collections For Other Agencies
3411	COMMISSIONER OF FINANCE		780.00	09/01/2013 09/30/2013 6 Transactions		
954	DEPT Total:		780.00	Marriage License	1 Vendors	6 Transactions
956	DEPT			Sales Tax		
72	651 COMMISSIONER OF REVENUE 86-956-000-0000-6850		1,127.00	SEPT 2013 SALES TAX (16,392)		Collections For Other Agencies
	651 COMMISSIONER OF REVENUE		1,127.00	1 Transactions		
956	DEPT Total:		1,127.00	Sales Tax	1 Vendors	1 Transactions
966	DEPT			HUTCHINSON CITY SALES TAX		
71	651 COMMISSIONER OF REVENUE 86-966-000-0000-6850		14.00	SEPT HUTCHINSON TAX(2,900)		Collections For Other Agencies
	651 COMMISSIONER OF REVENUE		14.00	1 Transactions		
966	DEPT Total:		14.00	HUTCHINSON CITY SALES TAX	1 Vendors	1 Transactions
975	DEPT			DNR Clearing Account		
39	509 MINNESOTA DNR 86-975-000-0000-6850		492.50	DNR		Collections For Other Agencies
	509 MINNESOTA DNR		492.50	10/01/2013 10/07/2013 1 Transactions		
975	DEPT Total:		492.50	DNR Clearing Account	1 Vendors	1 Transactions
976	DEPT			Game & Fish Clearing Account		
38	509 MINNESOTA DNR 86-976-000-0000-6850		30.00	G & F		Collections For Other Agencies
				10/01/2013 10/07/2013		

***** McLeod County IFS *****



POOL
10/11/13 1:47PM
86 Trust and Agency Fund

Audit List for Board AUDITOR'S VOUCHERS ENTRIES

Vendor	Name	Rpt	Warrant Description	Invoice #	Account/Formula Description
No.	Account/Formula	Accr	Service Dates	Paid On Bhf #	On Behalf of Name
509	MINNESOTA DNR				
			1 Transactions		
976	DEPT Total:		Game & Fish Clearing Account	1 Vendors	1 Transactions
		30.00			
86	Fund Total:		Trust and Agency Fund		19 Transactions
		71,187.41			
	Final Total:		55 Vendors	100 Transactions	
		244,046.91			

***** McLeod County IFS *****



Audit List for Board AUDITOR'S VOUCHERS ENTRIES

Recap by Fund	<u>Fund</u>	<u>AMOUNT</u>	<u>Name</u>	
	1	9,461.97	General Revenue Fund	
	3	146,691.06	Road & Bridge Fund	
	5	6,523.71	Solid Waste Fund	
	11	333.39	Human Service Fund	
	25	9,849.37	Special Revenue Fund	
	86	71,187.41	Trust and Agency Fund	
	All Funds	244,046.91	Total	Approved by,
			
			

(Top 3 inches reserved for recording data)

QUIT CLAIM DEED
Business Entity to Joint Tenants

Minnesota Uniform Conveyancing Blanks
Form 10.3.6 (2013)

eCRV number: 180389

DEED TAX DUE: \$ 82.50

DATE: October 22, 2013
(month/day/year)

FOR VALUABLE CONSIDERATION, McLeod County
(insert name of Grantor)

a municipal corporation under the laws of Minnesota ("Grantor"),
hereby conveys and quitclaims to Daniel and Betty Werth, husband and wife
(insert name of each Grantee)

McLeod County ("Grantee"), as joint
tenants, real property in McLeod County, Minnesota, legally described as follows:

The North Half of Lot Three (3) in Block Fifty-four (54) in the Townsite of Hutchinson South Half, McLeod County, Minnesota, lying
and being in the Northwest Quarter of Section 6, Township 116 North of Range 29 West.

Check here if all or part of the described real property is Registered (Torrens)

together with all hereditaments and appurtenances belonging thereto.

Check applicable box:

- The Seller certifies that the Seller does not know of any wells on the described real property.
- A well disclosure certificate accompanies this document or has been electronically filed. (If electronically filed, insert WDC number: _____.)
- I am familiar with the property described in this instrument and I certify that the status and number of wells on the described real property have not changed since the last previously filed well disclosure certificate.

Grantor

McLeod County
(name of Grantor)

By: _____
(signature) Paul Wright

Its: McLeod County Board Chair
(type of authority)

By: _____
(signature) Patrick Melvin

Its: McLeod County Administrator
(type of authority)

State of Minnesota, County of McLeod

This instrument was acknowledged before me on October 22, 2013, by Paul Wright

(month/day/year)

(name of authorized signer)

as McLeod County Board Chair

(type of authority)

and by Patrick Melvin

(name of authorized signer)

as McLeod County Administrator

(type of authority)

of McLeod County

(name of Grantor)

(Stamp)

(signature of notarial officer)

Title (and Rank): _____

My commission expires: _____
(month/day/year)

THIS INSTRUMENT WAS DRAFTED BY:
(insert name and address)

Michael Junge
McLeod County Attorney
830 East 11th Street, Suite 112
Glencoe, MN 55336

TAX STATEMENTS FOR THE REAL PROPERTY DESCRIBED IN THIS
INSTRUMENT SHOULD BE SENT TO:
(insert legal name and residential or business address of Grantee)

Daniel & Betty Werth
105 Douglas Drive
Glencoe, MN 55336



MINNESOTA - REVENUE

Electronic Certificate of Real Estate Value

eCRV ID: **180389** **McLeod County** Auditor ID:

Submit Date: **10/15/2013 8:41 AM** Accept Date:

Buyers Information

Person name: **Daniel Werth**
 Address: **105 Douglas Drive, Glencoe, MN 55336 US**
 Foreign address: **No**
 Phone number: **3205102143** Email:
 *** MN Revenue does not display SSN/Tax ID fields due to privacy. ***
 Comments:

Person name: **Betty Werth**
 Address: **105 Douglas Drive, Glencoe, MN 55336 US**
 Foreign address: **No**
 Phone number: **3205102143** Email:
 *** MN Revenue does not display SSN/Tax ID fields due to privacy. ***
 Comments:

Sellers Information

Organization name: **McLeod County**
 Address: **830 East 11th Street, Glencoe, MN 55336 US**
 Foreign address: **No**
 Phone number: **3208645551** Email:
 *** MN Revenue does not display SSN/Tax ID fields due to privacy. ***
 Comments:

Property Information

County: **McLeod**
 Legal description: **The North Half of Lot Three (3) in Block Fifty-four (54) in the Townsite of Hutchinson South Half, McLeod County, Minnesota, lying and being in the Northwest Quarter of Section 6, Township 116 North of Range 29 West, County of McLeod, State of Minnesota**
 Will use as primary residence: **No**
 What is included in the sale: **Land and Buildings**
 New construction: **No**

Property Address(es)

Property address: **440 Grove Street, Hutchinson, 55350**

Parcel ID(s)

Primary parcel ID: **23.050.4320**
Additional parcel ID(s):

Use(s)

Planned type/use: **Residential (3 or less units) / House - Single Family dwelling**
Prior type/use: **Residential (3 or less units) / Group home facility**

CONFESSION OF JUDGMENT FOR DELINQUENT REAL ESTATE TAXES

State of Minnesota
McLeod County

District Court
1st Judicial District

TO THE ADMINISTRATOR OF THE DISTRICT COURT OF MCLEOD COUNTY:

I, **Brent L. & Roxanne K. Burge (aka Roxanne K. Hamm)**, owner of the following described parcel of real property located in McLeod County, Minnesota, to-wit:

Parcel ID # 20.050.0960

Municipality: CITY OF STEWART

Legal Description: TOWN OF STEWART
LOT 1 BLOCK 15

upon which there are delinquent taxes for the taxes payable year ²⁰¹³~~2011~~ and prior years, as follows:

Year	Taxes	Penalty	Interest*	Cost	Total
2013	1,428.00	57.12	0.00	0.00	1,485.12
2007	1,980.00	0.00	769.22	20.00	2,769.22
				Total	\$4,254.34

*Interest Figured Through **10/31/2013**

do hereby offer to confess judgment under M.S. 279.37 in the sum of **\$4,254.34** and waive all irregularities in the tax proceedings affecting such taxes and any defense or objections which I may have thereto, and direct judgment to be entered for the amount hereby confessed less the sum of **\$425.43** hereby tendered, being one-tenth of the amount of said delinquent taxes, penalties, interest, and costs.

I agree to pay the balance of such judgment in nine equal annual installments, with interest at the rate provided in M.S. 279.03 (2013 equals 10%) and payable annually on the installments remaining unpaid. Each annual installment is to be paid on or before December 31 of each year following the year in which this judgment is confessed.

I also agree to pay current taxes on said parcel each year before they become delinquent or within thirty days after final judgment in proceedings to contest such taxes under M.S. 278.01 to 278.13, inclusive.

10/14/13
Date

Roxanne Burge Hamm
Owner Signature

Address: PO Box 172
Stewart MN 55385

Telephone No.: 320.296.1376

**MCLEOD COUNTY BOARD
AGENDA REQUEST**

Please provide the following coversheet to process each individual request for Board consideration and/or action:

Board meeting date:	<u>10/22/13</u>	Originating department:	<u>Highway</u>
Consent or regular agenda:	<u>regular</u>	Preferred agenda time:	<u>915</u>
Amount of time needed:	<u>15 min</u>	Funding source (if applicable):	<u>Local</u>
Contact person for more info:	<u>Brian</u>	Are funds in Dept. budget:	<u>yes</u>
Representative (present at the meeting):	<u>Brian/Elvis</u>	Number of signed copies:	<u>0</u>

MOTION REQUESTED:

Consider purchase of a new sign truck package (chassis, body, and crane) to replace existing unit as follows:

1. Chassis

- Freightliner M2 106 single axle
- Istate Truck Center, Inver Grove Heights, MN
- **\$74,344.15 plus applicable tax/license (State Contract)**
- *(Comparable International 4400 chassis price is \$78,557.08)*

2. Body

- Maintainer Custom body
- RBL Inc., Minneapolis, MN
- **\$82,452 plus applicable tax**
- Aspen Equipment of Bloomington, MN quoted \$83,085

3. Crane

- Maintainer H7024
- RBL Inc., Minneapolis, MN
- **\$21,491 plus applicable tax**
- Aspen Equipment of Bloomington, MN quoted \$21,257

This truck is in the 2013 budget.

JUSTIFICATION FOR MOTION:

The existing unit has 10,000 hours on it, so it is to the point where the engine, transmission or hydraulic system could have major issues at any time. The utility/sign box, trailer hitch, ramp and crane tower were built in 1988 and were upgraded to a new chassis in 1999. These were all built by county staff and

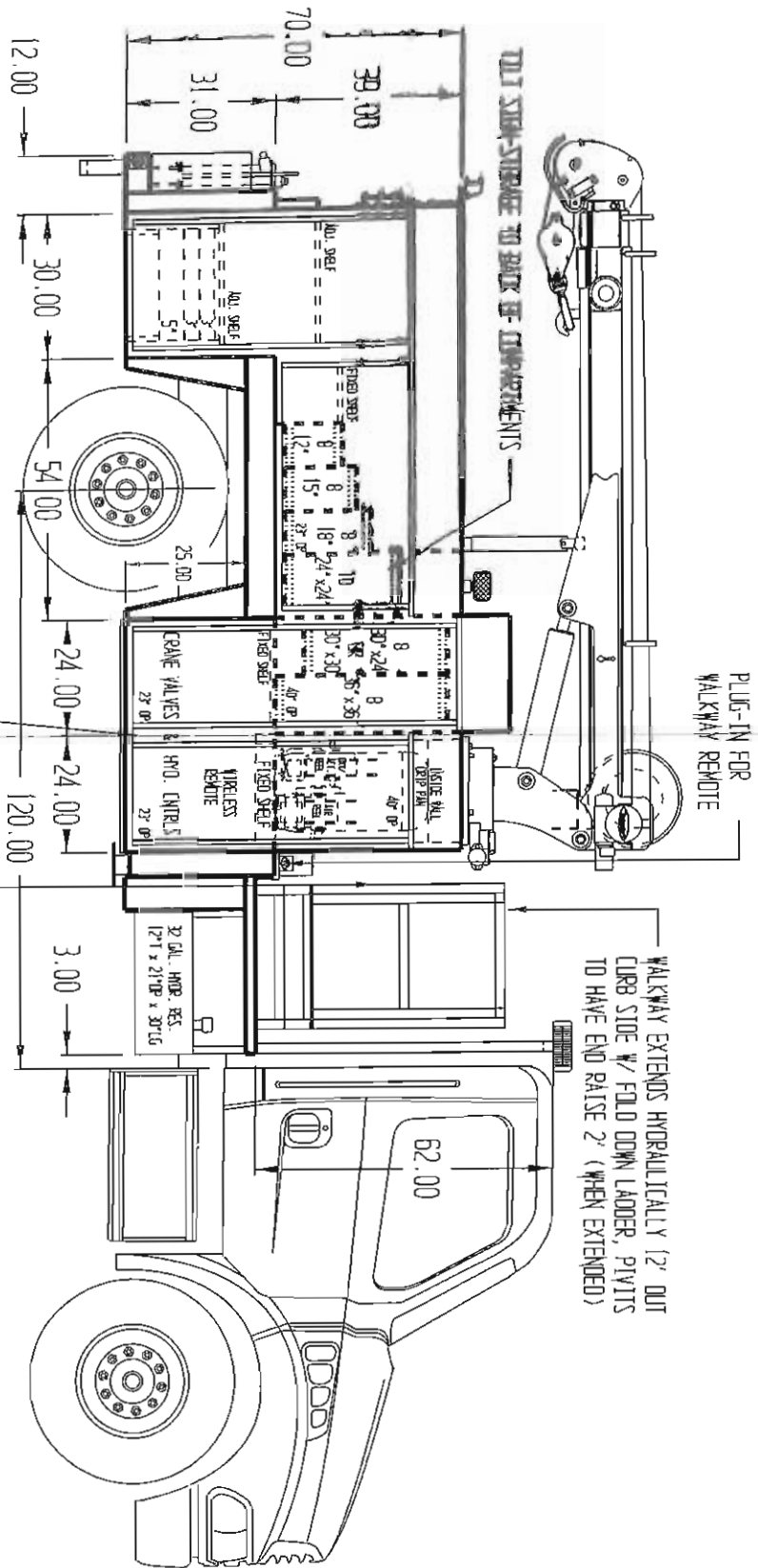
are not certified or have a weight rating so they do not meet current OSHA standards. We are again having issues with the crane and it needs to be replaced. The new ramp will be wider, longer and also raise higher to reach the taller signs. The crane and ramp require outriggers which also takes more room on the truck. The box will also have storage for the larger signs that are now being used. The new equipment, which will meet all safety standards and will require a chassis with a longer wheelbase and a heavier gross vehicle weight rating than the current truck.

APPROVED BY: _____

DATE: _____

PAINT CODE: _____

RED



NOTE: NEED DURABLED ON BACK WALL OF SIGN-STORAGE COMPARTMENTS

NOTE: ALL COMPARTMENTS TO HAVE ROLL UP DOORS

PLEASE REPORT ANY ERRORS FOUND ON THIS PRINT

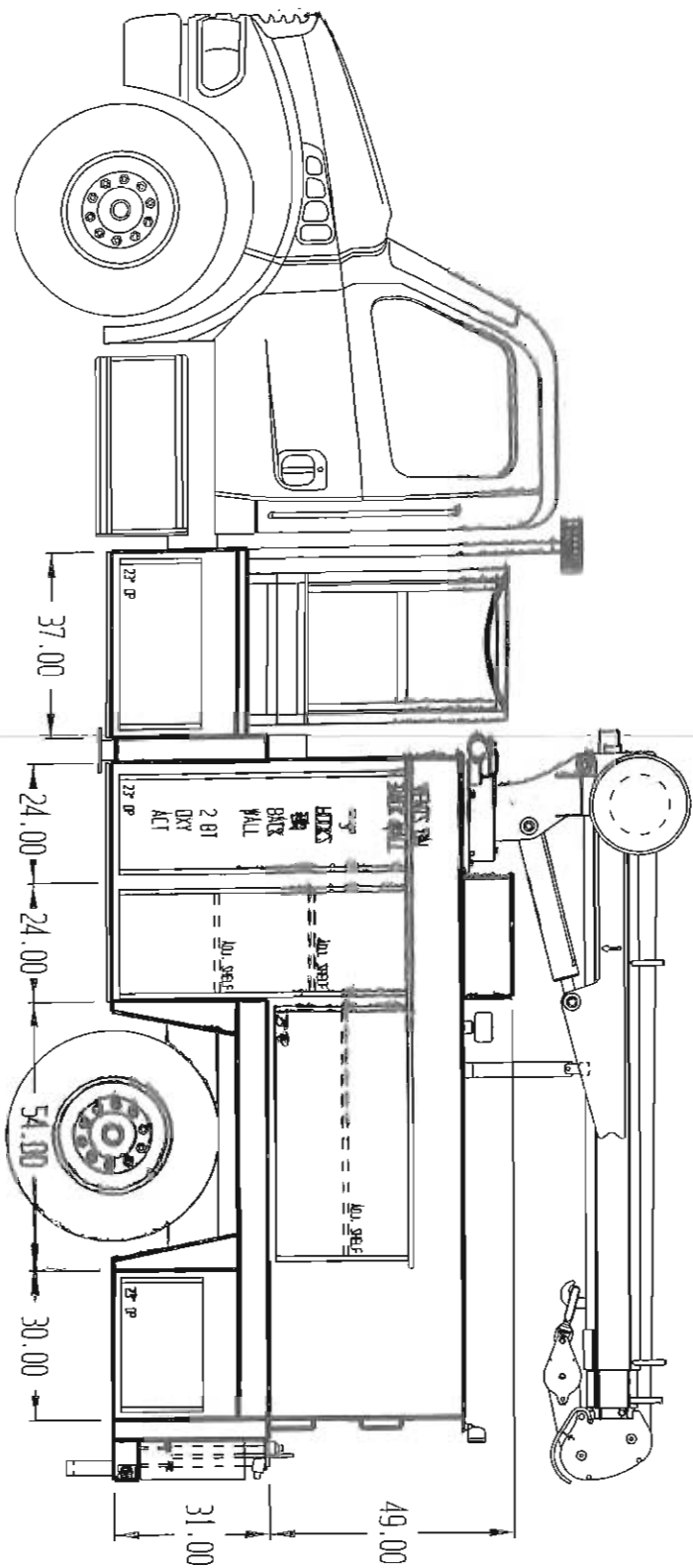
THIS PRINT CONTAINS CONFIDENTIAL INFORMATION AND IS THE PROPERTY OF MAINTAINER CORP. OF IOWA, INC. AND IS NOT TO BE COPIED OR REPRODUCED WITHOUT THE EXPRESSED WRITTEN PERMISSION OF MAINTAINER CORP. OF IOWA, INC.		PROPRIETARY DATA PROPERTY OF MAINTAINER CORPORATION OF IOWA, INC.	
US DIMENSIONS ARE IN INCHES UNLESS OTHERWISE INDICATED		COPYRIGHT © 2001	
BREAK ALL ANGLES 1°	SCALE: 1:24		
EXES .01 x .45°	SIZE: B	Corporation of Iowa, Inc. P.O. Box 349 1701 S. 2nd Avenue Sheldon, Iowa 51201	
US PL011	US ANGLES	OF TM: TJE	DATE: 08/28/13
MADE IN THE USA		RBL / MCLEOD CO.	
DRAWING NUMBER: H702AST-2-138		M/CLEOD-3	

APPROVED BY: _____

DATE: _____

PAINT CODE: _____

RED



PLEASE REPORT ANY ERRORS FOUND ON THIS PRINT

THIS PRINT CONTAINS CONFIDENTIAL INFORMATION AND IS THE
 SOLE PROPERTY OF MAINTAINER CORP. OF IOWA, INC. AND IS
 NOT TO BE COPIED OR REPRODUCED WITHOUT THE EXPRESSED
 WRITTEN PERMISSION OF MAINTAINER CORP. OF IOWA, INC.
 ALL DIMENSIONS ARE IN INCHES UNLESS OTHERWISE
 SPECIFIED.

PROPRIETARY DATA PROPERTY OF
 MAINTAINER CORPORATION OF IOWA, INC.
 COPYRIGHT © 2001

BEAR ALL EXCES DI X 45°	INCHES .001	INCHES XXX 1.005	MAINTAINER CORP. OF IOWA, INC.
US 94011	US 94011	US 94011	MAINTAINER CORP. OF IOWA, INC.
MADE IN THE USA	DRAWING NUMBER: H702AST-2-138	SCALE: 1:24	DATE: 08/28/13
		SIZE: 8	DEPT: 1 JE
			DATE: 08/28/13
			RBL / MCLEOD CO.

Maintainer
 Corporation of Iowa, Inc.
 P.O. Box 349 1701 S. 2nd Avenue
 Sheldon, Iowa 51201

Addendum #2
SEQ 330-113
Date 16-Sep-13

Single Axle Cab & Chassis

VENDOR NAME Istate Truck Center

YEAR, MAKE AND MODEL 2014 Freightliner M2 106 Single Axle

This section for use when ordering	
WB	211"
CA	120"
AF	72"
Rear Ratio	6.14
Cab Color	RED
Wheel Color	WHITE
Notes	CONTRACT # 61003

Grand Total \$ 74,344.15

Code	Spec #	Description	Qty	Price	Subtotal
	1.0	PRICE FOR BASE UNIT:	1	\$ 51,938.00	\$ 51,938.00
	2.0	FRAME OPTIONS			
546-101	2.16	2,037,600 rbm,15.07 sm, 120,000 psi 202" to 241" WB	1	\$ 341.00	\$ 341.00
556-1AR	2.32	Three-piece 14" chromed steel center bumper with collapsible ends	1	\$ 230.00	\$ 230.00
	3.0	FRONT AXLE/SUSPENSION/BRAKE/OPTION			
427-001	3.11	Front brake dust shields	1	\$ 42.00	\$ 42.00
	3.3	12,000 front axle and matching suspension	1	\$ 20.00	\$ 20.00
619-005	3.68	Maintenance free rubber bushings - front axle	1	\$ 0.01	\$ 0.01
	4.0	SINGLE REAR AXLE/SUSPENSION/BRAKE/OPTIONS			\$ -
41T-002	4.119	Synthetic lube in rear axle	1	\$ 0.01	\$ 0.01
888-047	4.123	Manual dump valve for air suspension without gauge	1	\$ 93.00	\$ 93.00
910-004	4.129	Dual leveling valves for rear air suspensions	1	\$ 173.00	\$ 173.00
622-216	4.17	23,000# air suspension in lieu of springs	1	\$ 1,223.00	\$ 1,223.00
425-002	4.25	Rear brake dust shield	1	\$ 31.00	\$ 31.00
	4.4	21,000# rear axle and matching suspension	1	\$ 199.00	\$ 199.00
386-073	4.86	Meritor 17T main driveline with half round yokes 120" to 160" CA	1	\$ 263.00	\$ 263.00
	6.0	TIRES/RIMS OPTIONS:			\$ -
498-011	6.1	Nylon wafers or wheel guards on all wheels (6 ea)	1	\$ 15.00	\$ 15.00
094-0BM	6.45	Michelin XD2 255/70R22.5 16 ply rear tires	1	\$ 434.00	\$ 434.00
502-1EF	6.70	8.25x22.5 aluminum front wheels in lieu of steel	1	\$ 212.00	\$ 212.00
505-1EF	6.76	8.25x22.5 aluminum rear wheels in lieu of steel	1	\$ 425.00	\$ 425.00
	7.0	BRAKE SYSTEM OPTIONS:			\$ -
480-083	7.12	Wabco SS-1200 Plus air dryer with integral air governor and heater	1	\$ 218.00	\$ 218.00
479-015	7.15	Air Dryer frame mounted	1	\$ 0.01	\$ 0.01
460-008	7.21	Steel air brake reservoirs mounted inside rail	1	\$ 0.01	\$ 0.01
	8.0	ENGINE/EXHAUST AND FUEL TANKS OPTIONS:			\$ -
016-1DK	8.28	Right hand outboard under step mounted horizontal aftertreatment system assembly with LH C-Pillar mounted vertical tailpipe	1	\$ 491.00	\$ 491.00
233-017	8.30	Bright upper stack(s)	1	\$ 138.00	\$ 138.00
23U-001	8.32	6 gallon diesel exhaust fluid tank	1	\$ 0.01	\$ 0.01
23Y-002	8.35	Diesel exhaust fluid pump mounted aft of diesel exhaust fluid tank	1	\$ 17.00	\$ 17.00
204-192	8.50	50 gallon/189 liter rectangular aluminum fuel tank	1	\$ 26.00	\$ 26.00
101-2N8	8.8	Cummins ISB 6.7-325 hp / 750 lb/ft torque	1	\$ 3,911.00	\$ 3,911.00
	9.0	ENGINE RELATED OPTIONS:			\$ -
648-002	9.24	Radiator bug screen	1	\$ 25.00	\$ 25.00
128-076	9.25	Engine brake system	1	\$ 7.00	\$ 7.00
103-004	9.26	Extended life anti-freeze	1	\$ 49.00	\$ 49.00
124-1E1	9.37	Delco 200 amp 28-SI quadramount pad alternator	1	\$ 83.00	\$ 83.00
171-007	9.47	Gates Blue-Stripe radiator hoses or equal	1	\$ 0.01	\$ 0.01
	10.0	TRANSMISSION OPTIONS:			\$ -
342-582	10.41	Allison 3000 RDS automatic transmission with pto	1	\$ 5,514.00	\$ 5,514.00
35T-001	10.5	Synthetic (TranSynd) lubrication for Automatic Transmission	1	\$ 0.01	\$ 0.01
353-022	10.51	Vehicle interface wiring with body builder connector mounted back of cab	1	\$ 42.00	\$ 42.00

STATE OF MINNESOTA
PRICING PAGE

Code	Spec #	Description	Qty	Price	Subtotal
34C-001	10.56	Electronic transmission customer access firewall	1	\$ 38.00	\$ 38.00
	11.0	ELECTRICAL OPTIONS:			\$ -
293-058	11.100	Battery Positive load disconnect with cab mounted control switch mounted outboard drive seat	1	\$ 167.00	\$ 167.00
302-047	11.20	LED marker lights	1	\$ 23.00	\$ 23.00
329-091	11.29	(6) ignition controlled extra switches with indicator lights wired to power distribution box with relays providing 20 amps per circuit to junction block and 1 circuit at 30 amps	1	\$ 249.00	\$ 249.00
295-029	11.6	Remote jump start terminals	1	\$ 58.00	\$ 58.00
284-045	11.62	(2)12 volt lighter style dash power plug	1	\$ 32.00	\$ 32.00
87L-003	11.65	Engine remote interface with park brake & neutral interlock	1	\$ 29.00	\$ 29.00
148-070	11.67	Engine remote interface with preset fast idle	1	\$ 215.00	\$ 215.00
163-001	11.72	Engine remote interface at back of cab	1	\$ 0.01	\$ 0.01
721-001	11.76	Back up alarm 97 db	1	\$ 41.00	\$ 41.00
372-035	11.79	Electric/air dash mounted pto switch with indicator lamp	1	\$ 58.00	\$ 58.00
311-012	11.8	OEM daytime running lights	1	\$ 12.00	\$ 12.00
292-098	11.84	(2) Alliance model 1231 group 31 12 volt 2250 CCA batteries	1	\$ 23.00	\$ 23.00
282-001	11.94	Single battery box frame mounted LH side under cab	1	\$ 0.01	\$ 0.01
	12.0	CAB EXTERIOR OPTIONS:			\$ -
980-5F6	12.13	Imron and clear coat paint option	1	\$ 0.01	\$ 0.01
650-008	12.15	Cab Air Ride Suspension	1	\$ 0.01	\$ 0.01
764-010	12.20	Cab visor, external, painted to match cab color	1	\$ 128.00	\$ 128.00
558-001	12.28	Front tow hooks	1	\$ 50.00	\$ 50.00
74B-080	12.4	Fender mirrors per Spec 12.4	1	\$ 87.00	\$ 87.00
647-001	12.41	Engine winter front	1	\$ 19.00	\$ 19.00
646-023	12.43	Hood mounted chromed plastic grill	1	\$ 48.00	\$ 48.00
65X-003	12.44	Chrome engine air intake grill	1	\$ 27.00	\$ 27.00
690-002	12.45	Tunnel/firewall liner	1	\$ 16.00	\$ 16.00
744-1BM	12.5	Heated mirrors per Spec 12.5	1	\$ 135.00	\$ 135.00
678-018	12.51	Left and right hand extended exterior grab handles with single rubber insert	1	\$ 74.00	\$ 74.00
677-016	12.62	Dual level cab entry steps on both sides	1	\$ 180.00	\$ 180.00
829-076	12.8	Upcharge for cab extension or larger cab	1	\$ 3,837.00	\$ 3,837.00
829-071	12.9	Severe duty aluminum cab option	1	\$ 0.01	\$ 0.01
	13.0	CAB INTERIOR OPTIONS:			\$ -
882-018	13.118	One valve park brake system w/shifter controlled autopark & warning indicator	1	\$ 54.00	\$ 54.00
346-003	13.14	Transmission oil sensor (check & fill)	1	\$ 0.01	\$ 0.01
532-002	13.16	Tilt & telescope steering wheel	1	\$ 251.00	\$ 251.00
299-013	13.18	Self canceling turn signals	1	\$ 0.01	\$ 0.01
055-002	13.2	Premium grade interior trim package	1	\$ 179.00	\$ 179.00
756-1D9	13.26	Premium high back air suspension driver seat with 3 chamber air lumbar, integrated cushion extension, forward and rear cushion tilt, adjustment	1	\$ 219.00	\$ 219.00
760-1D9	13.31	Premium high back air suspension passenger seat with 3 chamber air lumbar, integrated cushion extension, forward and rear cushion tilt, adjustment	1	\$ 250.00	\$ 250.00
654-011	13.5	Power window/both passenger and driver window	1	\$ 115.00	\$ 115.00
758-025	13.51	Gray Mordura cloth for driver seat covers	1	\$ 35.00	\$ 35.00
761-025	13.52	Gray Mordura cloth for Passenger seat covers	1	\$ 35.00	\$ 35.00
746-1A2	13.6	O.E.M factory installed, AM/FM	1	\$ 168.00	\$ 168.00
860-004	13.63	Smart switch expansion moduel	1	\$ 120.00	\$ 120.00
739-034	13.67	Premium Insulation	1	\$ 91.00	\$ 91.00
655-005	13.69	Power door locks regular cab (required with power windows)	1	\$ 52.00	\$ 52.00
700-002	13.7	O.E.M factory installed, air conditioning	1	\$ 552.00	\$ 552.00
830-017	13.8	Cab mounted non-resettable hour meter	1	\$ 0.01	\$ 0.01
	14.0	MN/DOT OPTIONS:			\$ -
	15.0	TRAILER TOW OPTIONS:			\$ -
296-027	15.6	Primary connector/recptacle wired for combination stop/turn, center pin powered through ignition with stop signal prewire package	1	\$ 88.00	\$ 88.00
297-001	15.6	SAE J560 7-way primary trailer cable recptacle mtd. End of frame.	1	\$ 5.00	\$ 5.00
	16.0	MANUALS / INTEREST FEE:			\$ -
	16.2	Manuals in print form, parts repair and service, per set (Engine and Transmission manuals Not included)	1	\$ 250.00	\$ 250.00
		Option not pirced on State of Minnesota truck contract			
093-ORV	6.999	Michelin XZA2 275/70R22.5 18 ply front tires	1	\$ 174.00	\$ 174.00



56 Plymouth Avenue North
Minneapolis, MN 55411
Phone 612-339-9395
Fax 612-339-1316

September 13, 2013

McLEOD COUNTY HIGHWAY DEPT.
1400 ADAMS STREET SE.
HUTCHINSON, MN 55350

ATTN. BRIAN SCHRUPP

REVISED QUOTE FOR MAINTAINER SIGN BODY

GALVANNEAL BODY TO RESIST CORROSION WHICH INCLUDES THE BODY SHELL, BULKHEAD, WHEEL SKIRTING AND ALL EXTERIOR SHEETING IS (14 / 12 GAUGE). TEN ROLL-UP ALUMINUM DOORS.
CABINET FLOORS ARE REINFORCED AND HAVE CLEAN-OUT DRAINS.
THREE POINT D-RING DOOR LATCHES WITH GAS SPRING DOOR HOLDERS.
ADJUSTABLE SHELVING PACKAGE.
BODY IS PRIMED, UNDERCOATED AND INCLUDES BACK-UP ALARM.
I.C.C. ROUND RECESSED LED LIGHTS, REFLECTORS, MUD FLAPS AND REAR BODY GRAB HANDLES.
MINI I.C.C. SAFETY KIT – 2 ½ LB. FIRE EXT AND HAZARD REFLECTORS.

MTS – 2 – 84” CA, HAS 62” HIGH X 23” DEEP COMPARTMENTS.

CAB GUARD, FULL HEIGHT, FOR FLAT BED, WITH SLOTS FOR REAR VIEWING (PAINTED)
POST STORAGE INSIDE MAIN SILLS WITH SLIDE – IN REAR PANEL AND REMOVABLE FRONT LID.
GALVANNEALED UNDERBODY STORAGE COMPARTMENT

- **CHASSIS EQUIPMENT AND ACCESSORIES** –
PTO FOR ALLISION AUTO TRANSMISSION.
ELECTRONIC ENGINE SPEED CONTROL – COMPUTER SET – ELECTRONIC ENGINE.

- **HYDRAULIC EQUIPMENT AND ACCESSORIES** –
HYDRAULIC EXTEND WALKWAY WITH PROTECTIVE SPRAY COATING, 12’ REACH, TO PIVOT UP (2’) AT THE END. INCLUDES CHAIN LINK SIDE RAILS 500 LB CAPACITY, WITH FOLD UP ACCESS LADDER ON THE WALKWAY. HYDRAULIC TOOL CIRCUIT WITH DETENT, PARKER FF .5” COUPLERS WITH DUST COVER.
ONE-WAY FLOW WITH 10 GPM MAX. AND 2,250 PSI.
DUAL HYDRAULIC SPRING HOSE REEL WITH ½” X 50’ HOSE, BALL STOP AND QUICK CONNECT
NOTE : REEL SIZE IS 14” WIDE 26” TALL X 25.5 DEEP CAPABLE OF 8-10 GPM.
HYDRAULIC POST DRIVER STORAGE ON TOP OF WORKBENCH UNDER THE CRANE.

- **COMPRESSOR EQUIPMENT AND ACCESSORIES –**

AIR ACCESSORY PACKAGE 3/8" X 50' WITH SPRING REWIND REEL, AND HOSE AND BALL STOP.

- **COMPARTMENT EQUIPMENT AND ACCESSORIES –**

OXY / ACT BOTTLE STORAGE WITH RATCHET STRAP, VENTS, "J" HOOKS AND A REINFORCED FLOOR. REEL, OXY/ACT, DUAL HOSE (GRADE R) REEL WITH 1/4" X 50' SPRING REWIND REEL WITH PIGTAILS TO THE TANK AREA OR COMPARTMENT OUTLET AND PLUG.

TWO COMPARTMENTS TO HAVE DIVIDERS AND STORAGE FOR SIGNS.

(8) 36" X 36" SIGNS, (8) 30" X 24" OR 30" X 30" SIGNS, (10) 24" X 24" SIGNS

(8) 18" SIGNS, (8) 15" SIGNS, (8) 12" SIGNS WITH VERT DIVIDERS.

10 ROLL-UP ALUMINUM DOORS.

SIGN STORAGE (VERT. WITH OPEN TOP) IN THE CENTER DECK, INCLUDES SLOTS, FOR (6-10 SIGNS) (10) 48" X 24" SIGNS.

STREET SIDE REAR COMPARTMENT SPLIT WITH UPPER AND LOWER SECTIONS.

ONE ADJUSTABLE SHELF IN COMPARTMENT.

ONE DIVIDER, VERTICAL, INSIDE COMPARTMENT.

- **LIGHTING EQUIPMENT AND ACCESSORIES –**

TWO EXTERIOR 12 V. FLOOD LIGHT (TRILLIANT LED, 875 LUMENS)

STROBE LIGHT, OVAL, LED , 2-REAR AMBER AND ARE RECESSED.

STROBE LIGHT , HIDE –A-WAY, LED AMBER, 2X-1 EACH FRONT CORNER.

TWO STROBE LIGHT, 12 VOLT AMBER.

EIGHT INTERIOR 12 VOLT LED STRIP LIGHTS.

INSTALL CUSTOMER SUPPLIED STROBE / BEACON AND WIRE TO THE CHASSIS CAB,

WHELEN MICRO 400

- **PAINTING EQUIPMENT AND ACCESSORIES –**

PAINT BODY WITH ONE URETHANE COLOR, (RED) NOT A METALLIC PAINT. ADDITIONAL CHARGES WILL BE REQUIRED.

PROTECTIVE SPRAY COVERING, CARGO DECK, COMPARTMENTS AND BUMPER, SPRAY

COVERING FOR CAB GUARD AND SPRAY COVERING IN ABOVE DECK SIGN STORAGE

COMPARTMENT.

- **ROLL-OUT DRAWERS AND TRAY EQUIPMENT ACCESSORIES –**

DUALOCK CUSTOM DRAWER SET HD ALUMINUM (300 LB CAPACITY EACH)

24" WIDE X 18" DEEP X 1-5", AND 2-3" HIGH ON ROLLERS AND ALL HAVE DIVIDERS.

LOCATED IN CURB SIDE REAR COMPARTMENT.

- **CENTER DECK EQUIPMENT AND ACCESSORIES –**

10" SLIDE IN PANEL AT REAR OF CENTER DECK.

GRAB HANDLE, ADDITIONAL GRAB HANDLE FOR BODY, SMALL CHROME, BOLT ON TYPE.

- **REAR BUMPER EQUIPMENT AND ACCESSORIES –**

12" DEEP, FULL BODY WIDTH STEP BUMPER WITH 2 1/2" SQUARE FRAME HITCH TUBE RATED AT CLASS V, TONGUE WEIGHT RATING 1,500 LBS., TWO WEIGHT RATING 15,000 LBS. WITH A 7-PRONG FLAT BLADE TRAILER PLUG.

HITCH CHANGED TO CLASS V RECEIVER TUBE 2 1/2" IN LIEU OF 2" HITCH IS RATED AT 18,000 LBS. TOW AND 2,700 LBS. TONGUE

SIGN ASSEMBLY POCKETS AT REAR OF BODY TO HOLD SIGNS POSTS FOR MOUNTING SIGNS ONTO.

STEP, INTERMEDIATE ON REAR OF BODY ABOVE 12" STEP BUMPER TO ACCESS THE REAR OF THE BODY.

TOTAL PRICE OF UNIT F.O.B. SHELDON, IOWA.....\$ 82,452.00

NOTE : PRICE DOES NOT INCLUDE ANY APPLICABLE TAXES

DELIVERY WILL BE MYSELF AND SOMEONE FROM McLOED CTY GOING DOWN FOR PICKUP.

SINCERELY,

JEFF SIMON

TERRITORY MANAGER

ND,MN,WI



CORPORATE HEADQUARTERS: 9150 Pillsbury Avenue South, Bloomington, MN 55420-3686 - Phone: (952) 888-2525 - Fax: (952) 656-7159 - Website: www.aspenequipment.com

Cust Name: **Mc Loed County**
Contact: **Brian Schrupp**
Phone:
Fax:

Quote Number:
MC LOED COUNTY-25-AUT-41432-14-21-v1

Quote Date: 6/7/2013

Aspen Equipment is pleased to offer the following quotation for your consideration

Qty	Part/Spec Number	Description	Installed
1	CUSTOM	Pedestal & reinforcement for up to 8400 series crane	\$2,586.00
1	Outrigger	Hiab Hyd out/down outrigger assembly for center mount crane	\$4,775.00
1	Aspen	Modify Rear Bumper Area for Outriggers	\$758.00
1	CUSTOM	Boomrest for pedestal syle crane mount	\$387.00
1	10.63 Hyd Hose Reel	Hannay Hydraulic Twin reel w/ 50' - 1/2" x 2 hose and ball stop and alum cover	\$1,547.00
1	9.09 CUSTOM	Custom SD 5/8" pull plate, black, 2 d-rings, Up to 20,000 lbs ILO ICC	\$881.00
1	9.6 5100	Draw-Tite Activator Brake Controller (Add trailer socket)	\$167.00
1	9.71 04020010	6-way round pin trailer socket	\$45.00
1	9.72 755-5003	Rubber boot for 6-way round pin trailer socket	\$3.00
4	11.051 43001	Galvanized E-Track, 10' section	\$332.00
4	11.052 23896	E-Track ratched strap, 2" x 12'	\$224.00
2	11.11 3510A	ECCO 1.1" x 3.3" Surface Mount Amber LED Strobe, Class 1 (EACH)	\$258.00
1	11.74 07020002	Lighted toggle switch	\$46.00
1	11.01 5650OLP	Reel Craft 3/8" X 50 Ft. spring retract air reel	\$542.00
1	11.06 TW7450OLP	Reel Craft Oxy/Acy reel, 50' 1/4" hose, spring retract	\$569.00
1	11.07 601032-25	Oxy/Acy hose leads. Required for plumbing TW7450OLP reel	\$37.00
1	11.08 S300090	Acetylene fitting. Required for plumbing TW7450OLP reel	\$19.00
1	11.09 S300091	Oxygene fitting. Required for plumbing TW7450OLP reel	\$19.00
1	11.06 DSI-12-1200N	Dimension 1200 Watt 21 Peak/10 Cont Amp pure sine inverter w/ Fuse	\$1,506.00
1	11.11 712-FUSE	Fuse kit for inverter wiring (Included with Inverter price)	
2	11.16 1PLT2	G.F.I. Outlet with cover plate (Interior mount, add'l parts req'd exterior mounting)	\$414.00
1	Aspen Equipment Co	Post pounder storage post on rear bumper with safety chain	\$169.00
1	Aspen Equipment Co	Plumb air hose reel to truck system air supply	
1	Aspen Equipment Co	Furnish and install air quick coupler to CS, plumbed from truck air supply	\$206.00
1	Aspen Equipment Co	Aluminum roof rack for front mounted strobes	
1	Alum Line Model 132/84	Custom All Aluminum Sign Body including	
1	Alum Line	132" long to fit 84" CA chassis	
1	Alum Line	66" height, 22" compartment depth above ftime except CS sign compartment, 40" depth	
1	Alum Line	.125 alumimnum tread bright material with Roll Up Doors on front 2 comp SS & CS	
1	Alum Line	4" Front of body to have a full width storage w/ open ends for 48" signs chain retainer	\$895.00
1	Alum Line	CS # 1, 22" wide 22" deep 3/8" air hose reel oxy/acy reel and 4-pull out drawer's	
1	Alum Line	CS # 2, 32" wide 40" deep for sign storage	
1	Alum Line	10" width each for 36", 30" and 24" signs	
1	Alum Line	CS # 3 to have sign storage front portion, 12" each for 18", 15" and 12" signs, 22" depth	
1	Alum Line	The back half to be open	
1	Alum Line	CS # 4, 30" width to be open	
1	Alum Line	SS # 1 36" width, two (2) adjustable shelves	
1	Alum Line	SS # 2, 18" width, to have Oxy / Acc bottle holders and ventred top and bottom	
1	Alum Line	SS # 3 open	

Continued On Next Page

Submitted by,

Mark Lundeen
612-719-4414

- F.O.B.: Bloomington, MN (Unless otherwise specified)
- Equipment Specifications subject to change
- Quote valid for 30 days from date of quotation

* Chassis modifications including, but not limited to alterations or relocation of components related to fuel tanks, air tanks, brakes, exhaust systems, battery boxes, protrusions above and below the frame rails, shortening or lengthening frame rails and the like will be added to the selling price. **Mfg's Surcharges may be added to this quotation.

Exhaust Systems: With the new EPA mandated diesel exhaust systems for 2007 and newer many changes are taking place. Manufacturers are often unable to depict accurately how the exhaust systems are configured and have difficulty stipulating whether certain components (I.e. PTOs and pumps) may fit in the confined spaces beneath the truck. 2007 EPA COMPLIANT DIESEL EXHAUST SYSTEMS CANNOT BE MODIFIED, RELOCATED OR REPLACED BY ASPEN EQUIPMENT. Due to evolving designs, Aspen Equipment can not maintain expertise on every chassis/engine/transmission/exhaust configuration possible, regardless of who orders or specifies it. Nor can Aspen Equipment guarantee that a chassis ordered today will not change in design prior to delivery from the factory. Therefore, Aspen Equipment does not warrant that quoted products can be installed on a chassis without modifications to the chassis or products installed. As such, Aspen Equipment will not be responsible for the cost of modifications due to exhaust systems conflicting with the installation of quoted products. Aspen Equipment will make every reasonable effort to ensure that installations are completed without additional charges to the customer.



CORPORATE HEADQUARTERS: 9150 Pillsbury Avenue South, Bloomington, MN 55420-3686 - Phone: (952)888-2525 - Fax: (952)656-7157 - Website: www.aspenequipment.com

Cust Name: **Mc Loed County**
Contact: **Brian Schrupp**
Phone:
Fax:

Quote Number:
MC LOED COUNTY-25-AUT-41432-14-21-v1

Quote Date: 6/7/2013

Aspen Equipment is pleased to offer the following quotation for your consideration

<u>Qty</u>	<u>Part/Spec Number</u>	<u>Description</u>	<u>Installed</u>
1	Alum Line	SS # 4 30" depth with 3 9"W x 10" H for collapsable sign's and 2 12" W x 14" high	
1	Alum Line	for collapsable sign brackets, accessible from door at rear, no side compartment door	
1	Alum Line	Below floor on SS # 1 & 2 to have HD shelf, 1/2 way up	
1	Alum Line	Rear of body to have SS rear compartment access door for signs storage	
1	Alum Line	Rear of cargo area to have a 10" false floor for 2-6', 2-8' and 1-10' post's	
1	Alum Line	Rear apron to have build in horizontal post pockets from CS, 0-18", 24", 30" and 36" CL	\$564.00
1	Alum Line	Rear of rerar compartment to have 2 barricade holders	\$309.00
1	Alum Line	Rear area to have full width rear bumper with two (2) access steps to bed area	\$465.00
2	B2399BC2	with two (2) grab handles	\$48.00
1	Alum Line	FMVSS108 LED lighting package as required	
1	AG Tool box	3-3" deep drawer unit installed CS # 1 below frame. 16" wide x 18" deep	\$758.00
1	AG Tool box	1-5" deep drawer unit installed CS # 1 top of frame. 16" wide x 36" deep	\$583.00
1	Aspen Equipment Co	Boom mount hydraulic hose reel	\$362.00
1	Misc Items For Install	Custom Alumline body	\$45,318.00
1	Aspen Equipment Co	30" x 12' custom catwalk with both power extend and elevation	\$16,237.00
		Crane pedestal to mounted in the middle of the the front cargo area	
1	1.183	Whelen ASPEN4 Super LED Light Package (2) Micro Ultra Freedom Fronts, (2) LED Amber 500 Series Rears, LED Backup, LED STT Grommet Mounted	\$2,056.00

State of Minnesota Contract C# 48605 Valid Through 6/30/2013

Tax Note: Applicable sales tax and/or FET estimates will be confirmed and added to the final invoice

Submitted by,	Quote Sub Total:	\$83,085.00
Mark Lundeen	Estimated Sales Tax:	\$5,712.09
612-719-4414	Total:	\$88,797.09

- F.O.B.: Bloomington, MN (Unless otherwise specified)
- Equipment Specifications subject to change
- Quote valid for 30 days from date of quotation

* Chassis modifications including, but not limited to alterations or relocation of components related to fuel tanks, air tanks, brakes, exhaust systems, battery boxes, protrusions above and below the frame rails, shortening or lengthening frame rails and the like will be added to the selling price. **Mfg's Surcharges may be added to this quotation.

Exhaust Systems: With the new EPA mandated diesel exhaust systems for 2007 and newer many changes are taking place. Manufacturers are often unable to depict accurately how the exhaust systems are configured and have difficulty stipulating whether certain components (I.e. PTOs and pumps) may fit in the confined spaces beneath the truck. 2007 EPA COMPLIANT DIESEL EXHAUST SYSTEMS CANNOT BE MODIFIED, RELOCATED OR REPLACED BY ASPEN EQUIPMENT. Due to evolving designs, Aspen Equipment can not maintain expertise on every chassis/engine/transmission/exhaust configuration possible, regardless of who orders or specifies it. Nor can Aspen Equipment guarantee that a chassis ordered today will not change in design prior to delivery from the factory. Therefore, Aspen Equipment does not warrant that quoted products can be installed on a chassis without modifications to the chassis or products installed. As such, Aspen Equipment will not be responsible for the cost of modifications due to exhaust systems conflicting with the installation of quoted products. Aspen Equipment will make every reasonable effort to ensure that installations are completed without additional charges to the customer.



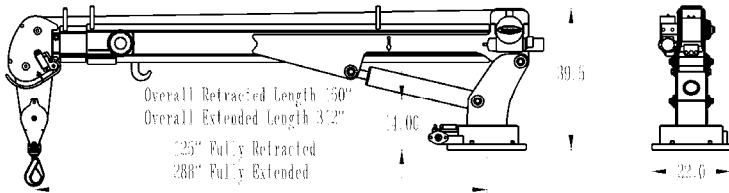
Maintainer

H7024 CRANE

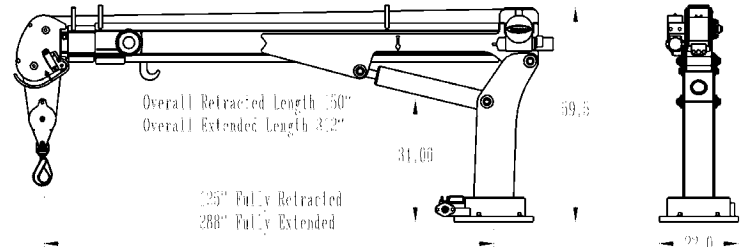


specifications

short tower



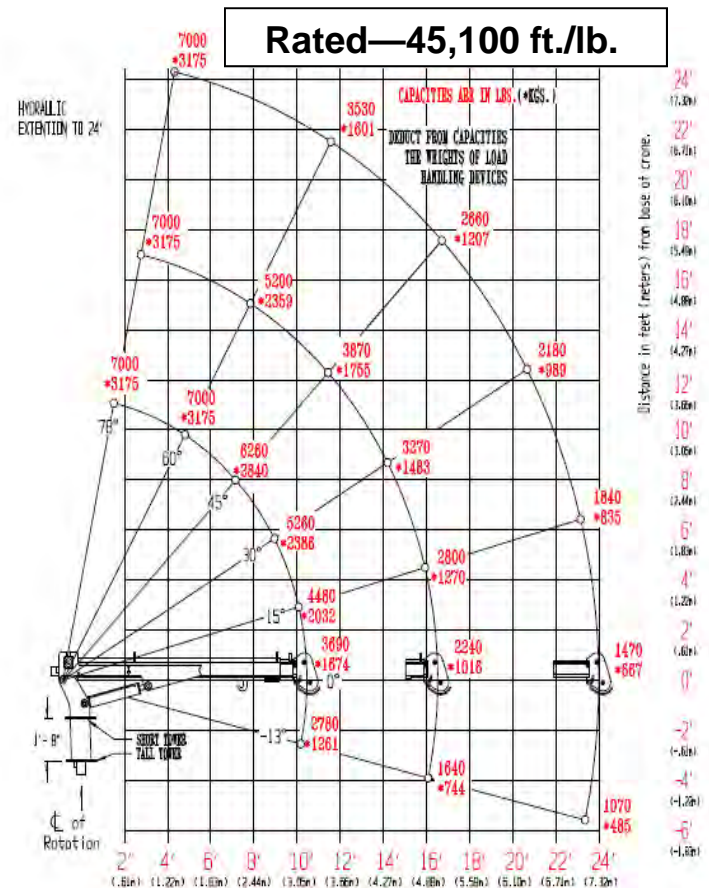
tall tower



features

- “Boom Mounted” Gear Winch—30 fpm
- Single Part Line (Dual Part Capable)
- Weight—1,700 lb.
- Total Operational Range 91 deg. (-13 to +78)
- Double Sheave Design
- Anti-Two Block Relocation (Inboard)
- User-friendly Snatch Block Storage
- 120 ft. of 3/8 in dia. Steel Cable
- 615 deg. of Continuous Rotation
- 24 ft. Hydraulic Reach
- Hexagonal Boom
- Tall and Short Tower Configurations
- Closed-center/Load-sensing Hydraulic System
- OSHA 1910.180 / ANSI B30.5 Compliant

ratings



options

- Wireless Remote Control System
- Planetary Winch—60 fpm
- Open-center Hydraulic System



**56 Plymouth Avenue North
Minneapolis, MN 55411
Phone 612-339-9395
Fax 612-339-1319**

September 14, 2013

MCLEAD COUNTY HIGHWAY DEPT.
1400 ADAMS STREET S.E. HUTCHINSON, MN 55350

ATTN. BRIAN SCHRUPP

QUOTE FOR CRANE ONLY

H7024 CRANE, 7,000 LB. MAX CAPACITY (45,100 FT* LB) WITH HYDRAULIC EXTEND HEX-BOOM FROM 11' TO 24' WITH TWO REAR HYDRAULIC OUTRIGGERS UP/DOWN AND CRANE OUT CURB SIDE. CRANE INCLUDES WIRELESS REMOTE, CRANE HOUR METER, ENGINE START/STOP, ANTI-TWO BLOCK, WITH OVERLOAD AND HOLDING VALVES.

TOTAL COST OF CRANE F.O.B. SHELDON, IOWA.....\$ 21,491.00

PRICE DOES NOT INCLUDE ANU APPILCABE TAXES AND DOES NOT INCLUDE DELIVERY

SINCERELY,

JEFF SIMON



CORPORATE HEADQUARTERS: 9150 Pillsbury Avenue South, Bloomington, MN 55420-3686 - Phone: (952) 888-2525 - Fax: (952) 656-7159 - Website: www.aspenequipment.com

Cust Name: **Mc Loed County**
Contact: **Brian Schrupp**
Phone:
Fax:

Quote Number:
MC LOED COUNTY-25-AUT-41528-14-01-v1

Quote Date: 9/11/2013

Aspen Equipment is pleased to offer the following quotation for your consideration

<u>Qty</u>	<u>Part/Spec Number</u>	<u>Description</u>	<u>Installed</u>
1	1.0 480989001	8406H NexStar 1, Hyd, 8,400 @ 6 ft. , ext to 20', Non-cont rot, FM Ctl Crane rating of 50,000 ft. lbs. 8,400 lbs capacity at 6' 2,500 lbs capacity at 20' Full power extension to 20' Hydraulic winch with 60 ft./ min. single line speed 95' of 3/8" aircraft quality cable 370° power rotation Automatic overload protection standard. Equipped with anti-two block preventer. Proportional control standard Meets OSHA 1910.180 requirements Meets ANSI B30.5 safety standards	\$20,000.00
1	7.49	Spring Build-up for body leveling (LG Crane, 4k and larger)	\$667.00
1	7.5	Wire 2-Speed and/or Start Stop (Chassis must have ECM factory programmed)	\$590.00
State Contract # 66035 Valid Through July 31, 2014			

Tax Note: Applicable sales tax and/or FET estimates will be confirmed and added to the final invoice

Submitted by,	Quote Sub Total:	\$21,257.00
Mark Lundeen 612-719-4414	Estimated Sales Tax:	\$1,461.42
	Total:	\$22,718.42

- F.O.B.: Bloomington, MN (Unless otherwise specified)
- Equipment Specifications subject to change
- Quote valid for 30 days from date of quotation

* Chassis modifications including, but not limited to alterations or relocation of components related to fuel tanks, air tanks, brakes, exhaust systems, battery boxes, protrusions above and below the frame rails, shortening or lengthening frame rails and the like will be added to the selling price. **Mfg's Surcharges may be added to this quotation.

Exhaust Systems: With the new EPA mandated diesel exhaust systems for 2007 and newer many changes are taking place. Manufacturers are often unable to depict accurately how the exhaust systems are configured and have difficulty stipulating whether certain components (i.e. PTOs and pumps) may fit in the confined spaces beneath the truck. 2007 EPA COMPLIANT DIESEL EXHAUST SYSTEMS CANNOT BE MODIFIED, RELOCATED OR REPLACED BY ASPEN EQUIPMENT. Due to evolving designs, Aspen Equipment can not maintain expertise on every chassis/engine/transmission/exhaust configuration possible, regardless of who orders or specifies it. Nor can Aspen Equipment guarantee that a chassis ordered today will not change in design prior to delivery from the factory. Therefore, Aspen Equipment does not warrant that quoted products can be installed on a chassis without modifications to the chassis or products installed. As such, Aspen Equipment will not be responsible for the cost of modifications due to exhaust systems conflicting with the installation of quoted products. Aspen Equipment will make every reasonable effort to ensure that installations are completed without additional charges to the customer.



**FY 2014 & 2015 STATE OF MINNESOTA
BOARD OF WATER and SOIL RESOURCES
NATURAL RESOURCES BLOCK GRANT AGREEMENT**

Vendor:	0000197362	VN#:	
PO#:	3000003974	Date Paid:	

Amount	Account Code	Fund Code	Financial Department ID	Appropriation Code	FY	Appropriation Description
\$32,087	441302	2001	R9P32FDL	R9PFDL3	2014	MPCA County Feedlot
\$12,642	441302	1000	R9P32LAW	R9PNRB1	2014	Local Water Management
\$16,447	441302	1000	R9P32WCA	R9PNRB1	2014	Wetland Conservation Act
\$2,988	441302	1000	R9P32SLD	R9PNRB1	2014	DNR Shoreland
\$18,600	441302	2001	R9P32SST	R9PNRS3	2014	MPCA SSTS

For BWSR Use Only

This Grant Agreement is between the State of Minnesota, acting through its Board of Water and Soil Resources (Board) and **McLeod County, 2391 Hennepin Ave N Glencoe Minnesota 55336.**

<i>This grant is for the following Grant Programs :</i>		
P14-4253	2014 - Feedlot Program - NRBG (McLeod County)	\$32,087
P14-5014	2014 - Local Water Management - NRBG (McLeod County)	\$12,642
P14-4977	2014 - Wetland Conseration Act - NRBG (McLeod County)	\$16,447
P14-0685	2014 - Shoreland-NRBG (McLeod County)	\$2,988
P14-8941	2014 - Septic Treatment Systems - NRBG (McLeod County)	\$18,600

Total Grant Awarded: \$82,764

Recitals

1. The 2013 Legislature in Laws of Minnesota 2013, Chapter 114, Article 3, Sec. 5, appropriated funds for the Natural Resources Block Grants (NRBG), to assist with the implementation of Comprehensive Local Water Plans (LWM), the Wetland Conservation Act (WCA), and Shoreland Programs; and in Sec. 3, Subd. 2, Subsurface Sewage Treatment Systems (SSTS), and County Feedlot Permit Programs, and in Chapter 137, Article 2, Section 5 (j), Subsurface Sewage Treatment Systems.
2. The 2013 Legislature in Laws of Minnesota 2013, Chapter 137, Article 2, Sec. 5 (j), authorizes the MPCA to use Clean Water Funds for SSTS Upgrade Grants.
3. Minnesota Statutes 103B.101 subd. 9 (1), and 103B.3369, subd. 5 authorize the Board to award grants.
4. The Grantee has met the criteria established by statute, the Board, the DNR, and MPCA, and is eligible to receive NRBG grant funds.
5. The Grantee has agreed to appropriate the required local match.
6. The Grantee represents that it is duly qualified and agrees to perform all services described in this grant contract to the satisfaction of the State.
7. As a condition of the grant, Grantee agrees to minimize administration costs.

Authorized Representative

The State's Authorized Representative is David Weirens, BWSR Land and Water Section Administrator, 520 Lafayette Road North, Saint Paul, MN 55155, 651-297-3432, or his successor, and has the responsibility to monitor the Grantee's performance and the authority to accept the services and performance provided under this Grant Agreement.

one month of that date.

- 4.4 The Board must consult with the approving authority before granting an amendment to the grant agreement, or a component thereof.
- 4.5 The obligation of the State under this Grant Agreement will not exceed the amount stated above for each grant program.
- 4.6 This grant is an advance payment. Advance payments allow the grantee to have adequate operating capital for start-up costs, ensure their financial commitment to landowners and contractors, and to better schedule work into the future.

5 Conditions of Payment

All services provided by the Grantee under this Grant Agreement must be performed to the State's satisfaction, as determined at the sole discretion of the State's Authorized Representative and in accordance with all applicable federal, state, and local laws, ordinances, rules, and regulations. The Grantee will not receive payment for work found by the State to be unsatisfactory or performed in violation of federal, state, or local law.

The Minnesota Department of Administration's Office of Grants Management Policy on Grant Closeout Evaluation (Policy 08-13), requires the Board to consider a grant applicant's past performance before awarding subsequent grants to them. The Board must consider a grant applicant's performance on prior grants before making a new grant award of over \$5,000. The Board may withhold payment on this and grants from other programs if the Grantee is not in compliance with all Board reporting requirements.

6 Assignment, Amendments, and Waiver

- 6.1 **Assignment.** The Grantee may neither assign nor transfer any rights or obligations under this Grant Agreement without the prior consent of the State and a fully executed Assignment Agreement, executed and approved by the same parties who executed and approved this Grant Agreement, or their successors in office.
- 6.2 **Amendments.** Any amendment to this Grant Agreement must be in writing and will not be effective until it has been executed and approved by the same parties who executed and approved the original Grant Agreement, or their successors in office.
- 6.3 **Waiver.** If the State fails to enforce any provision of this Grant Agreement, that failure does not waive the provision or its right to enforce it.

7 Liability

The Grantee must indemnify, save, and hold the State, its agents, and employees harmless from any claims or causes of action, including attorney's fees incurred by the State, arising from the performance of this Grant Agreement by the Grantee or the Grantee's agents or employees. This clause will not be construed to bar any legal remedies the Grantee may have for the State's failure to fulfill its obligations under this Grant Agreement.

8 State Audits

Under Minn. Stat. § 16B.98, subd. 8, the Grantee's books, records, documents, and accounting procedures and practices of the Grantee or other party relevant to this Grant Agreement or transaction are subject to examination by the State and/or the State Auditor or Legislative Auditor, as appropriate, for a minimum of six years from the end of this Grant Agreement, receipt and approval of all final reports, or the required period of time to satisfy all State and program retention requirements, whichever is later.

- 8.1 The books, records, documents, accounting procedures and practices of the Grantee and its designated local units of government and contractors relevant to the NRBG, and match and grant expenditures, may be examined at any time by the Board or Board's designee and are subject to verification. The Grantee or delegated local unit of government will maintain records relating to the receipt and expenditure of grant and match funds.
- 8.2 The Grantee or designated local unit of government implementing this Agreement will provide for an audit that meets the standards of the Office of State Auditor. The audit must cover the duration of the Agreement Period and be performed within one year after the end of the Agreement Period or when routinely audited, whichever occurs first. Copies of the audit report must be provided to the Board if requested.

9 Government Data Practices

The Grantee and State must comply with the Minnesota Government Data Practices Act, Minn. Stat. Ch. 13, as it applies to all data provided by the State under this grant contract, and as it applies to all data created, collected, received, stored, used, maintained, or disseminated by the Grantee under this Grant Agreement. The civil remedies of Minn. Stat. § 13.08 apply to the release of the data referred to in this clause by either the Grantee or the State.

If the Grantee receives a request to release the data referred to in this Clause, the Grantee must immediately notify the State.

10 Workers' Compensation

The Grantee certifies that it is in compliance with Minn. Stat. § 176.181, subd. 2, pertaining to workers' compensation insurance coverage. The Grantee's employees and agents will not be considered State employees. Any claims that may arise under the Minnesota Workers Compensation Act on behalf of these employees and any claims made by any third party as a consequence of any act or omission on the part of these employees are in no way the State's obligation or responsibility.

11 Governing Law, Jurisdiction, and Venue

Minnesota law, without regard to its choice-of-law provisions, governs this Grant Agreement. Venue for all legal proceedings out of this grant contract, or its breach, must be in the appropriate state or federal court with competent jurisdiction in Ramsey County, Minnesota.

12 Termination

The State may cancel this Grant Agreement at any time, with or without cause, upon 30 days' written notice to the Grantee. Upon termination, the Grantee will be entitled to payment, determined on a pro rata basis, for services satisfactorily performed.

13 Data Disclosure

Under Minn. Stat. § 270C.65, Subd. 3, and other applicable law, the Grantee consents to disclosure of its social security number, federal employer tax identification number, and/or Minnesota tax identification number, already provided to the State, to federal and state tax agencies and state personnel involved in the payment of state obligations. These identification numbers may be used in the enforcement of federal and state tax laws which could result in action requiring the Grantee to file state tax returns and pay delinquent state tax liabilities, if any.

14 Prevailing Wage

It is the responsibility of the Grantee or contractor to pay prevailing wages on construction projects to which state prevailing wage laws apply (Minn. Stat. 177.42 – 177.44). All laborers and mechanics employed by grant recipients and subcontractors funded in whole or in part with these state funds shall be paid wages at rates not less than those prevailing on projects of a character similar in the locality.

15 Intellectual Property Rights

The State owns all rights, title, and interest in all of the intellectual property rights, including copyrights, patents, trade secrets, trademarks, and service marks in the Works and Documents *created and paid for under this grant*. Works means all inventions, improvements, discoveries (whether or not patentable), databases, computer programs, reports, notes, studies, photographs, negatives, designs, drawings, specifications, materials, tapes, and disks conceived, reduced to practice, created or originated by the Grantee, its employees, agents, and subcontractors, either individually or jointly with others in the performance of this grant. Works includes "Documents." Documents are the originals of any databases, computer programs, reports, notes, studies, photographs, negatives, designs, drawings, specifications, materials, tapes, disks, or other materials, whether in tangible or electronic forms, prepared by the Grantee, its employees, agents, or subcontractors, in the performance of this grant. The Documents will be the exclusive property of the State and all such Documents must be immediately returned to the State by the Grantee upon completion or cancellation of this grant at the State's request. To the extent possible, those Works eligible for copyright protection under the United States Copyright Act will be deemed to be "works made for hire." The Grantee assigns all right, title, and interest it may have in the Works and the Documents to the State. The Grantee must, at the request of the State, execute all papers and perform all other acts necessary to transfer or record the State's ownership interest in the Works and Documents.

***IN WITNESS WHEREOF**, the parties have caused this Grant Agreement to be duly executed intending to be bound thereby for FY 2014 and FY 2015 Natural Resources Block Grants.*

Approved:

McLeod County

Board Of Water and Soil Resources

BY:	<u>Paul Wright</u>
TITLE:	<u>Chair McLeod County Board of Commissioners</u>
DATED:	_____

BY:	_____
TITLE:	<u>Land & Water Section Administrator</u>
DATED:	_____

Attachment: FY 2015 Addendum – Notice of Payment (to be provided after July 1, 2015.)

H:1415SWCDG
A

AGREEMENT FOR CONTRACTED HOSTING SERVICES

Whereas McLeod County (the County) owns and operates the network and server infrastructure to host an application entitled PH-Doc and the needed components to access it remotely; and

Whereas McLeod Meeker Sibley Community Health Services (MMS CHS) is a joint powers agency that will utilize said application.

THEREFORE, it is hereby agreed as follows:

The McLeod County IT Department shall provide the following services to host the PH-Doc Application:

1. Server infrastructure to host the PH-Doc application. Consists of one or more Windows based virtual servers housed in the County's virtual environment that will serve as the Application Server, Queue Server, and or Network Share Server.
2. Server infrastructure to host the PH-Doc records database. Consists of a Windows based virtual server housed in the County's virtual environment and where the database will exist on an instance of Microsoft SQL Server
3. Server infrastructure to host the PH-Doc Mirth Appliance. Consists of a Linux based appliance where information can be exchanged with outside entities such as pharmacies.
4. Server infrastructure to host the Active Directory accounts for logging into the McLeod County Domain. Consists of multiple Windows based servers running Active Directory for authentication to the domain.
5. Server infrastructure for RSA SecurID two factor authentication. Consists of multiple Windows based virtual servers housed in the County's virtual environment for authentication and personal keyfob device to match security code on the server.
6. Server infrastructure for Citrix environment. Consists of multiple Windows based virtual servers housed in the County's virtual environment running Citrix XenApp to allow end users to connect to applications that have been published.
7. Network infrastructure for end user connections. Consists of network equipment to route requests for authentication, and application use.
8. Provide for the Data Protection/Disaster Recovery infrastructure to maintain periodic backups of the data according to the County's current schedule in the case of a disaster.
9. Regular maintenance and updates to the Infrastructures stated above to keep them performing at a high rate of efficiency.

10. McLeod County IT will work with the Vendor to provide updates to the application as well as the database to make sure the Vendor is satisfied with the state of the application.
11. Delegated permission to respective IT departments for creating, administering, and supporting Active Directory accounts for authentication to the McLeod Domain.
12. Delegated permission to the respective IT department for creating, administering, and supporting the corresponding RSA SecurID accounts and issuing of keyfobs for two factor authentication.
13. Procurement of keyfobs and licensing based on the number of MMS CHS end users.
14. Initial build and configuration of the PH-Doc environment with the Vendor.
15. McLeod County IT will train respective IT departments on how to create and administer the Active Directory and RSA SecurID accounts
16. McLeod County IT will train the respective IT departments on how to use the RSA SecurID devices and how to connect to Citrix. They in turn will train the individual users at their sites on how to connect to Citrix and access the application
17. Each end user will sign a Device checkout form before being able to login and connect to the application.
18. McLeod County PH will bill Meeker and Sibley County on behalf of McLeod County IT for onetime costs based on number of end users for software licensing and keyfob hardware.
19. McLeod County PH will bill Meeker and Sibley County on behalf of McLeod County IT annually for costs based on number of end users, for maintenance of the infrastructure, licensing maintenance, and a minimum of twelve hours to support the environment.
20. McLeod County PH will bill Meeker and Sibley County on behalf of McLeod County IT annually for hourly support costs in the amount of \$85.00 per hour for support hours that exceed the minimum.
21. The agreement shall remain in effect 1 year from the implementation date of application at which time the agreement will be reviewed and mutually agreed to continue for a time stipulated by all parties.
22. This agreement or any amendments to the agreement will be submitted in writing and any party can discontinue the agreement with a written 90 day notice. All costs will be billed at a prorated amount for the time served by the agreement.

McLeod County Board Chair

Date

McLeod County Administrator

Date

McLeod County Attorney

Date

Meeker County Board Chair

Date

Meeker County Administrator

Date

Meeker County Attorney

Date

Sibley County Board Chair

Date

Sibley County Administrator

Date

Sibley County Attorney

Date

MMS CHS Board Chair

Date

MMS CHS Director

Date



Minnesota Counties Computer Cooperative

100 Empire Drive Suite 201
Saint Paul, MN 55103-1845

(651) 917-6969
Fax:(651) 917-6989
www.mnccc.org

2012-2013 PH-Doc Pricing

*Proposed Pricing with new Maintenance & Support Fee Schedule
Approved June 24, 2011 and June 22, 2012*

MCCC Membership Fee for 2012: \$ 1,250 *Annual*

Total License Fee is a one-time cost. Payment terms maybe payable over three years or as approved by the CHS User Group.

PH-DOC License Fee:

Population of County:

Population: 0-29,999	\$ 35,000
Population: 30,000-49,999	\$ 45,000
Population: 50,000-99,999	\$ 55,000
Population: 100,000-199,999	\$ 65,000
Population: 200,000 and over	\$ 75,000

Maintenance & Support: Billed quarterly, based upon county population, starting first quarter after contract signed by agency.

County Population	2011	2012	2013
<30,000	\$16,595.00	\$16,595.00	\$16,595.00
30,000 – 49,999	\$16,595.00	\$17,424.00	\$18,295.00
50,000 – 99,999	\$16,595.00	\$18,424.00	\$20,295.00
100,000 – 199,999	\$16,595.00	\$18,924.00	\$20,795.00
>199,999	\$16,595.00	\$19424.00	\$21,295.00

Training & Installation

Training (150 hours)* \$ 22,500 *One-Time Cost*
SQL Licenses** \$ 150 *One-Time Cost per PC*

**Training of 150 hours is an estimate and not a fixed cost. Training is billed in actual hours at the current contract rate of \$150 per hour.*

***Based upon \$150 per PC using PH-Doc. (Price is subject to change.)*

Health Information Exchange:

Mirth Physical or Virtual appliance \$6,000 *One-Time Cost per agency*
Maintenance \$2,302 *Annual Support*

Additional Costs:

The owner agencies may vote to approve sharing the costs of additional software programming, enhancement fund payments, trainings, workshops or other meeting costs over and above those costs listed here. As an owner agency of PH-Doc you will have the opportunity to vote on these issues. The User Group estimates the next year's budget at the annual June Meetings. These prices are good through June 2013. Additional costs may be incurred for optional Trainings & Workshops and Meeting Reimbursement Costs.

MCCC PH-Doc Costs

Counties - Population - End Users	McLeod - 36,100 - 30		Meeker - 23,100 - 15		Sibley- 15,200 - 15		Combined	
	Onetime	Annual	Onetime	Annual	Onetime	Annual	Onetime	Annual
UserGroup Costs Annual		\$1,250.00		\$1,250.00		\$1,250.00		\$1,250.00
License Fee Based on Population	\$45,000.00		\$35,000.00		\$35,000.00		\$55,000.00	
Maintenance and Support - 2013 + 10% Based on Population		\$20,125.00		\$18,255.00		\$18,255.00		\$22,325.00
Training	\$22,500.00		\$22,500.00		\$22,500.00		\$22,500.00	
SQL Anywhere PC Licenses \$150/per PC for downloading info	\$4,500.00		\$2,250.00		\$2,250.00		\$9,000.00	
Mirth Appliance	\$6,000.00		\$6,000.00		\$6,000.00		\$6,000.00	
Mirth Maintenance		\$2,400.00		\$2,400.00		\$2,400.00		\$2,400.00
Application Costs	\$78,000.00	\$23,775.00	\$65,750.00	\$21,905.00	\$65,750.00	\$21,905.00	\$92,500.00	\$25,975.00
Infrastructure Costs Individually	\$33,072.20	\$18,819.00	***TBD	***TBD	***TBD	***TBD		
Total	\$111,072.20	\$42,594.00						
Combined Shared App Costs	\$30,833.33	\$8,658.33	\$30,833.33	\$8,658.33	\$30,833.33	\$8,658.33		
McLeod Hosting Costs****	\$21,491.84	\$16,041.00	\$13,345.28	\$5,316.00	\$13,345.28	\$5,316.00		
Total	\$52,325.17	\$24,699.33	\$44,178.61	\$13,974.33	\$44,178.61	\$13,974.33		
Cost Savings	\$58,747.03	\$17,894.67	\$21,571.39	\$7,930.67	\$21,571.39	\$7,930.67		

****Matt's Spreadsheet with purchase of SQL License

***TBD - Each Counties individual Infrastructure Costs

**Policy and Procedure For
MMS CHS Remote Access for Software Access**

PURPOSE

This Procedure is an agreement between McLeod County, MN, (the County) and McLeod, Meeker, Sibley Community Health Services (MMS CHS). The purpose of the agreement is to ensure the security of McLeod County systems and that data is not compromised as a result of MMS CHS's remote access. MMS CHS requires access to the County communications network to utilize the shared records system called PH-Doc through McLeod County's Citrix environment.

POLICY

The County allows MMS CHS controlled restricted, access to specific network resources for the specific purposes of utilizing the PH-Doc records system. At the discretion of the County, the County reserves the right to disable any and all MMS CHS remote access at any time without consulting with MMS CHS, if the County believes MMS CHS is not following this policy. The County will notify MMS CHS's Director in a timely manner if any access is disabled.

PROCEDURE

1. The County's security officer / IT Director or his/her designee must review all MMS CHS requests for any form of remote access. MMS CHS must have a signed Remote Access Agreement on file with the County IT Department. MMS CHS must also be under contract with the County IT Department for a Service Level Agreement and be in good standing. Individual users and members of MMS CHS must have a signed Mobile Technology Device Checkout Form in order to gain access. No access will be allowed until the County's security officer / IT Director or his/her designee; have issued approval.
2. All MMS CHS pcs will maintain up-to-date industry standard anti-virus and network monitoring software on its equipment. MMS CHS remote access will be via an Internet connection to the County network through the Citrix environment. MMS CHS connections to Citrix may time out after no more than 30 minutes of non-use. MMS CHS access is allowed only by protocols specified by the County. The County will provide the connection via Citrix and RSA keyfobs but MMS CHS will be responsible for hardware, licensing, and support costs to offset costs to McLeod County.
3. MMS CHS access will not be limited to business hours, but connectivity support will not be provided during non-business hours.
4. Remote access is not allowed to any County end user PC.
5. The County reserves the right to monitor or record any or all Citrix session information during a MMS CHS remote connection, without notification given to MMS CHS.
6. The County reserves the right to modify this policy and procedure at any time.

<hr/>	<hr/>	<hr/>
CHS Director	Date	Title
<hr/>	<hr/>	<hr/>
McLeod County IT	Date	Title

**Policy and Procedure For
MMS CHS Remote Access for Software Access**

_____	_____	_____
Meeker County IT	Date	Title

_____	_____	_____
Sibley County IT	Date	Title



McLeod County IT Department

Service Level Agreement

McLeod Meeker Sibley Community Health
Services (MMS CHS)

Author/Authors	Vincent M. Traver
Approved By	
Date	8/16/2013
Version	A
Revision History	

Table of Contents

- 1. INTRODUCTION.....3**

- 2. OBJECTIVES AND PURPOSE.....3**

- 3. SPECIFIC SERVICES WITHIN THIS SLA.....3**
 - 3.1 STANDARD SERVICES.....3
 - 3.2 NON-STANDARD SERVICES.....4
 - 3.3 SUPPORTED APPLICATIONS.....4

- 4. SUPPORT PROVISION.....4**
 - 4.1 SUPPORT PROVISION.....4
 - 4.2 SUPPORT HOURS.....5
 - 4.3 INCIDENT RESPONSE AND RESOLUTION TARGETS.....5

- 5. SERVICE REQUESTS.....6**
 - 5.1 EXAMPLES OF FREQUENTLY OCCURRING REQUESTS.....6

- 6. AVAILABILITY.....7**

- 7. RELIABILITY.....7**

- 8. SERVICE PERFORMANCE.....7**

- 9. SERVICE REVIEWS.....7**

- 10. SIGNATORIES.....8**

1. Introduction

This Service Level Agreement (SLA) describes the services and defines the target service levels to be provided by the McLeod County IT Department to MMS CHS. At the broadest level the service activities are grouped into two categories: incidents (something broken or not working normally) and service requests for new services or modifications to existing services. The customer can think of this as 'help me, it's broken', or 'I need something new/different/changed'.

This agreement, once signed, will be reviewed on an annual basis to understand if it is meeting the customers' business requirements.

2. Objectives and Purpose

The objectives of this document are to describe specific services being provided by McLeod County IT and identify targets against which service quality can be measured, reported, and reviewed.

The purpose of this process is to enhance the IT/Customer relationship and ensure that customer needs are met whenever possible – and that when they are not, such situations are immediately visible and can be investigated and resolved. This should lead to a cycle of gradually improving service quality.

3. Specific Services within this SLA

This SLA describes the specific services being provided to MMS CHS.

3.1 Standard Services

The following are the standard services being provided:

Service	Summary	Support Hours
PH-Doc Server Infrastructure	Windows based virtual servers that house the application and database for the PH Docs application to function and a mirth linux appliance for sharing info with outside vendors.	8X5
Network Infrastructure	Consists of firewalls and routers to accept requests from end users and route requests for authentication, and application use.	8X5
Citrix environment	Consists of multiple Windows based virtual servers running Citrix to allow end users to connect to applications that have been published.	8X5
RSA Security infrastructure	Consists of multiple Windows based servers for authentication and personal keyfob device to match security code on server.	8X5
Active Directory Environment	Consists of multiple Windows based servers running Active Directory for authentication.	8X5

Support Hours – to meet business needs, McLeod County IT provides support 8X5 (Monday-Friday 08:00 – 4:30 excluding holidays as defined by the McLeod County Personnel Policy). No incidents will be acknowledged outside of the 8X5 support hours and will be addressed the following day. Please refer to section 4.0 for more detail on the McLeod County IT Support Provision.

3.2 Services we don't provide

McLeod County IT does not provide any services regarding the functionality internal to the application. (i.e. Issues with data entry, creating reports, data missing, or drop down boxes missing, etc.) Those types of issues would be covered under your Vendor software support agreement. We also do not support any issues related to Meeker/Sibley County computers, computer functionality, Internet browsers or versions, or not being able to get connection to the Internet to access Citrix.

3.3 Supported Applications

Application Name	Support Hours
PH Docs Components - availability only, no internal functionality support of the application	8X5
Citrix Connectivity	8X5
RSA Security	8X5
Active Directory Accounts	8X5

4. Support Provision

4.1 Support Provision

This section is concerned with incidents (break/fix) and encompasses things that are obviously broken or not working, service degradation (poor response time, applications running slow, etc), incorrect output or unexpected results, or other issues that suggest something is amiss. We refer to these as incidents, which encompass **any event or failure impacting adversely upon the customer's ability to use a service.** The McLeod County IT process used to manage these is called Incident Management.

The goal of Incident Management is to restore service usage as quickly as possible even if by means of a work around or temporary solution. Our goal is to get you up and running quickly minimizing business impact.

These incidents or requests for support should be logged with the McLeod County IT Service Desk by:

McLeod County Public Health Employees

- web submission <http://helpdesk.co.mcleod.mn.us>
- Helpdesk phone x4357
- **"Helpdesk" link on** McLeod County Intranet site

Meeker County Public Health Employees

- Contact Respective County IT
- Respective County IT personal determine the problem
- Respective County contacts McLeod County IT at <https://helpdesk.co.mcleod.mn.us>

Sibley County Public Health Employee

- Contact Respective County IT
- Respective County IT personal determine the problem
- Respective County contacts McLeod County IT at <https://helpdesk.co.mcleod.mn.us>

Note: In a case where a Respective County IT person is unavailable, the counties need to work out with whom from McLeod Public Health would take the call and place the request to McLeod County IT. In this case we may be unable to help if it is determined to be an issue at the Respective County or with a Respective County pc.

Incidents should be reported to the IT service desk as quickly as possible. The appropriate priority should be set based on the impact and urgency of the incident. The priority of the incident will be determined when the original ticket is created.

4.2 Support Hours

The IT Service Desk provides support to customers 8 hours a day, five days per week to meet your business needs. The IT Service Desk has on-site staff 8:00 am – 4:30 pm, Monday to Friday (excluding holidays).

On call support is not available but in times of extreme critical or high priority issues the IT staff may stay late or come in early to work with the appropriate vendor to solve issues. Incidents reported to the IT Service Desk outside of regular business hours will be handled as if they were submitted the next business day. Service requests are handled during normal business hours: Monday-Friday 08:00 am - 4:30 pm excluding holidays.

4.3 Incident Response and Resolution Targets

Incidents will be categorized depending upon their priority level, which is determined with the customer. The priority levels and the target resolution time for each are shown in the following table:

Priority Level	Description	Acknowledgement Time (within support hours)	Resolution Time (within support hours)
1 – Critical	Mission critical service/system unavailable to all users (i.e. network not operational)	Not to exceed 30 minutes	Not to exceed 4 hours
2 – High	Mission critical service/system unavailable to a number of users or is interfering with core business functions (major business server is down, business critical application is down, communications link to a site is down)	Not to exceed 4 hours	Not to exceed 8 hours
3- Medium	Small number of users affected	Not to exceed 8 hours	Not to exceed 16 hours
4- Low	Single user or non-vital business function is impacted.	Not to exceed 16 hours	Not to exceed 24 hours

Definitions:

Acknowledgement time – within this time period a McLeod County IT resource will be assigned or begin action on the incident and will contact or advise the customer.

Resolution time – using the Incident Management process the service will be restored. Work-arounds or temporary fixes may be used. For example, alternate or loaner PCs may be provided or connection to a different printer may be made. The customer may experience some slight inconvenience but should be able to utilize the service. In most cases, incidents are resolved permanently at the first contact. In some cases McLeod County IT will need to utilize advanced technical problem solving skills to affect a permanent solution (or any solution in the event of a major

infrastructure failure). This may also involve or include 'fixes' required from a vendor. It is not possible to predict or guarantee in advance how long it might take to solve those kinds of problems and implement a permanent solution. Progress will be tracked in the ARS incident and when resolved, the customer will be notified.

Within support hours – to meet business needs, McLeod County IT provides support either 8x5 (Monday-Friday 08:00 – 4:30 excluding holidays)

Only extreme Critical or High priority incidents will be worked on with the vendor outside of 8x5 support hours. Please refer to section 3.1 to determine the specific support hours for your services.

5. Service Requests

Service requests are for service enhancements of a relatively minor nature. These are most often requested by an end user for one person. Projects and larger changes to IT systems, applications and databases that cannot be effectively articulated through the Service Desk are to be submitted to the Application Vender via your MCCC PH-Doc User Group.

Service requests should be submitted via the following avenues for each entity of MMS CHS:

McLeod County Public Health Employees

- web submission <http://helpdesk.co.mcleod.mn.us>
- Helpdesk phone x4357
- "Helpdesk" link on Intranet site

Meeker County Public Health Employees

- Contact Respective County IT
- Respective County IT personal determine the problem
- Respective County contacts McLeod County IT at <https://helpdesk.co.mcleod.mn.us>

Sibley County Public Health Employee

- Contact Respective County IT
- Respective County IT personal determine the problem
- Respective County contacts McLeod County IT at <https://helpdesk.co.mcleod.mn.us>

All requests will be logged by the McLeod County IT Service Desk; a reference number will be provided to the customer and handled as per the table below by the appropriate team.

Service requests are handled during normal business hours: Monday-Friday 08:00-4:30 excluding holidays.

Priority Level	Description	Acknowledgement Time (within support hours)	Completion Time (within support hours)
1 – High	Mission critical service required for multiple users	Not to exceed 4 hours	Not to exceed 1 day
2 – Medium	Important service required for multiple users.	Not to exceed 8 hours	Not to exceed 3 days
3 – Low	Normal service required for one user.	Not to exceed 16 hours	Not to exceed 10 days

5.1 Examples of Frequently Occurring Requests

Listed below are some samples of frequently occurring requests:

- User ID creation/deletion
 - Active Directory and RSA account
- Procurement and delivery of RSA keyfob
- Applying application updates as needed/required by vendor
- Security access to areas needed

Here is a list of some sample activities that would not be defined as service requests (and therefore not fall under these time expectations) due to the complexity of the requests:

- Creation of new database environments
- Creation of physical server environments (or virtual server environments with complex security or resource requirements)
- Installation/configuration of systems software that could impact operational functionality or which is non-standard for the environment

6. Availability

This environment will not be considered to be a high availability environment and will not be supported as such which means there is little to no redundancy to the environment. One application server, one database server, means there will always be one point of failure.

6.1 System Maintenance

Regular system maintenance will be performed as needed on the second Tuesday of each month starting at 4:35pm and may last until 7:00am the following Wednesday. No notice will be provided when maintenance is performed during this regular maintenance window. Advance notice is required to be given by McLeod County IT if maintenance is to be performed outside of this regular maintenance window.

7. Reliability

The maximum number of service breaks that can be tolerated within an agreed period (may be defined as number of breaks e.g. 4 per annum, or as a mean-time-between-failure (MTBF). Definition of what constitutes a 'break' and how these will be monitored and recorded will be needed. This will be determined yearly and be evaluated by MMS CHS to determine if McLeod County IT is providing adequate service.

8. Service Performance

Details of the expected responsiveness of McLeod County IT services (e.g. target workstation response times for average, or maximum workstation response times, sometimes expressed as a percentile – e.g. 95% within two seconds), details of expected service throughput on which targets are based, and any thresholds that would invalidate the targets.

This should include indication of likely traffic volumes, throughput activity, constraints and dependencies (e.g. the number of transactions to be processed, number of concurrent users, and amount of data to be transmitted over the network). This is important so that performance issues that have been caused by excessive throughput outside the terms of the agreement may be identified.

9. Service Reviews

The targets agreed to in this document and service performance will be reviewed on an annual basis. McLeod County It or MMS CHS may request more frequent reviews or initiate a review should there be issues to discuss. In the case of a major change to a service the SLA and review period should be reviewed to ensure they are still appropriate.

10. Signatories

This document is agreed by the following parties

Signature..... MMS CHS Director

Date.....

Signature..... McLeod County IT Director

Date.....

Signature..... Meeker County IT Director

Date.....

Signature..... Sibley County IT Director

Date.....

Community Care

Community Care Staffing changes Oct. 1, 2013 related to implementation of the Social Services and Public Health structural planning changes.

Job Description	FTE	Grade	Difference in		Cost	Fringe @ 25% of		Total Cost
			hours	Computation		Cost	Cost	
PHN II	0.75	26	30	\$34.00/hour*1580 hours	\$53,720.00	\$13,430.00	\$67,150.00	
Public Health Nurse or Registered Nurse	1	24	40	\$25.02/hour*2080 hours	\$52,041.60	\$13,010.40	\$65,052.00	
PHNS Licensed Social Worker	1	22	40	\$22.74/hour*2080 hours	\$47,299.20	\$11,824.80	\$59,124.00	
PHNS Technical Clerk I	1	12	40	\$13.73/hour*2080 hours	\$28,558.40	\$7,139.60	\$35,698.00	
Registered Nurse Leave of Absence If a present staff takes the PHN II job we will have 30 hours coverage needed	0.6	22	-24	\$26.70/hour*1248 hours	-\$33,321.60	-\$8,330.40	-\$41,652.00	
Registered Nurse Leave of Absence If a present staff takes the PHN II job we will have 30 hours coverage needed	0.75	24	-30	\$31.50/hour*1580 hours	-\$49,770.00	-\$12,442.50	-\$62,212.50	
MCSS Office Support Specialist Sr. (PH is taking on .5 FTE of a Technical Clerk duties for SS contracts and all the Home and Community Based Delegation Audit Report Duties)	0.5	11	-20	\$13/hour*1040 hours	-\$13,520.00	-\$3,380.00	-\$16,900.00	
MCSS Social Worker	4.2	22	-168	4.2 SW at a grade of 22 as above			-\$248,320.80	
(PH is taking on 4.2 FTE of Social Work work.)								
Balance			-92					-\$142,061.30

Current recommended FTE per program:

Special Needs Basic Care (SNBC)	50 /CCM	We have 48 clients=1FTE's	} 7.85 FTE of RN/PHN
Elderly Waiver (EW)	50 /CCM	We have 141 clients= 3 FTE	
Skilled Nursing Facility (SNF)	75 /CCM	We have 149 clients=2FTE's	
Prime West Community Well (CW)	50 /CCM	We have 58 clients=1 FTE	
Continued waiver consultation, APS, PH nuisance	0.25 FTE		
Continued PCA assessments	0.5 FTE		} 1.0 FTE SW to replace current FTE SW time being provided by social services
Other programs (jail, etc)	0.1 FTE		
PHNS Social Worker (needed by 1-1-2014)	1.0 FTE		

Per MCSS, 65+ social workers will not be available after 1-1-2014, except for verbal consultations.

MCSS >65 social workers will be available at this time however these SW's are needed for other SS programs. SS would prefer that PH hires and supervises our own SW(s).

Ongoing availability of a MCSS social worker (i.e. contracted) cannot be guaranteed by current social services supervisors or director.

PH has agreed to try to go this route in order to meet McLeod County's PW contract requirements.

PH CC team has 5.5 FTE RN staff to provide above services, due to 0.6 FTE position LOA and 0.75 FTE needed for ongoing administrative duties.

In Community Care we are asking for:

- 1 - PHN II (30-40hr) to be the team leader for all the extra Prime West administrative tasks. Basically a supervisor. Will advertise internally first and then outside.
- 1 - PHN (40hr) to pick up the 24 hours from the Leave of Absence and 30-40 hours from the possible move of a present PHN into the PHN II position.
- 1 - LSW (40hr) to pick up Social Worker duties as required by Prime West and not available through Social Services
- 1 - Technical Clerk (40hr) to perform all of the tasks of the .5 FTE of Social Services Support Specialist work plus the MMIS data entry tasks that the 4.2 FTE Social Workers performed

PH's budget will include 100% of Prime West's contracted county case management income AND expenses starting 1/1/2014.

PH presently receives 45% and SS receives 55% of the monthly revenues from PW.

PH will be receiving an additional **\$324,504.41**(SS 55%) annually from PW starting 1/1/2014.

In looking at adding the 4 staff at the top of the page it will cost **\$227,024**

Despite the additional staff this change **will save McLeod County \$142,061.30/year** based on the above \$'s and the following 3 facts:

- 1) Social Services supervisors report that this change eliminated their current need to hire 4 FTE social workers if dual CCM continued.
- 2) PH is willing to delegate as many tasks as possible to office support staff (following the Douglas county model)
- 3) Changing to a single assessor and case manager model eliminates the time that a 2nd case manager was needed to travel or communicate with the co-casemanager.

Family Health

	FTE	Grade	Difference in hours	
Public Health Nurse Resigning 1/1/14	0.5	25	-20	no benefits
Public Health Nurse or Registered Nurse	0.5	22	20	no benefits
I have a .5 staff family health nurse who is a grade 22 who is interested in working full time				benefits
The cost savings in paying a grade 22 over a grade 25 is approximately \$5,148/year				benefits cost about \$14,000/yr

In Family Health we are asking for a .5 FTE staff person to become a FTE.

Prerie Landscaping

Hutch

Kahnke Brothers Tree Farm: 10603 Boone Road, Plato, MN 55370
(320) 238-2572 FAX: (320) 238-2574 kahnkefarm.com



Estimation/Special Order Worksheet

Last Name: Koglin		First Name(s): Al	Date of Initial Contact: 10/2/13
Daytime Phone: 320-484-4307		Evening Phone:	Cell:
Address: Piepenburg Park		City: Hutchinson, MN	Zip Code: 55350

Qty.	Species	Variety	Size	Unit \$	Expanded \$	Planting \$	Delivery \$	Source	In-Stock?
20	Spruce, White	Black Hills	4'	\$180 ⁰⁰				36000.00	
20	Cedar, Red	species	4'	\$175 ⁰⁰				3500.00	
10	Pine, Red	Norway	4'	\$175 ⁰⁰				1750.00	
50	Planting/Delivery	within 30 miles of Plato	32" BB		\$2,500 ⁰⁰			2500.00	
				Total Materials/Labor <u>\$11,350⁰⁰</u>					

Tax: Exempt for Real Improvement to Property

Grandtotal:

Accepted Substitutions/Notes:

Amended Grand Total:

Date Order Placed:	Date Needed:	Date Received:
Date Pulled:	Customer Notified:	Date Picked-Up:

Date	Person Called	Message	In-Person	Result
10/15/13	Tom Pruep			



Licensed-Bonded-Insured

Brian Mikolichuk
21484 Eagle Ave
Winsted, Minnesota 55395
320-395-2002

McLeod County Fair Grounds
Country Diner
August 13, 2013

HEATING:

(2) Goodman 115,000 Btu 96% Eff Dual Stage Furnace – ECM Fan
Plenum Work
Honeywell IAC Two Stage Thermostat
Relays and Controls
Intakes and Exhausts Out of East Milking Parlor
Electrical
Permits/Inspections

BID: \$6,795.00

ADDITIONAL OPTIONS:

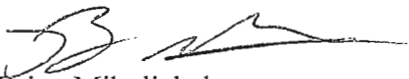
NOTES:

Furnaces installed as 2 stage operation. Furnace 1 will carry load, upon temperature drop, furnace 2 will operate as second stage.

TERMS:

Balance Due After Completion
Options/Extras Due at Term Applied

Thank You for the Opportunity to Bid your Project.


Brian Mikolichuk
Mikolichuk Plumbing & Heating LLC

HPH

Hutchinson Plumbing & Heating

8-24-13
McLeod County Fairgrounds
840 Century Ave
Hutchinson, MN 55350
Attn: Randy Starke

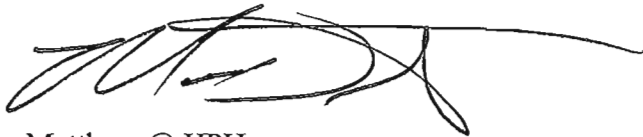
Subject: Furnace Replacement for the Country Diner

This estimate includes the following:

- 2-Frigidaire 95.1 % 120,000 Btu fixed speed 2 stage furnaces
- 10 years parts warranty
- 1 year labor warranty
- All duct work transition
- Vent the furnace through the roof
- Documented start-up of the equipment
- Removal & disposal of the old equipment
- All shipping cost to complete the work
- All labor cost to complete the work

Total cost of this estimate: \$ 7350.00

This estimate is subject to change if not accepted within 30 days. If you have any question please, contact Hutchinson Plumbing & Heating @ (320) 587-8439. Thank you for the opportunity to bid your work.



Matthew @ HPH

BASE BID PRICING

Parking Lot 1: McLeod County North Complex, 2391 Hennepin Avenue N.

Lump sum per time for light snow falls \$ 120.⁰⁰

Lump sum per time for heavy snow falls \$ 210.⁰⁰

Cost of sanding and/or salting per application \$ 65.⁰⁰

395.00

Parking Lot 2: McLeod County Annex Building, 2397 Hennepin Avenue N.

Lump sum per time for light snow falls \$ 130.⁰⁰

Lump sum per time for heavy snow falls \$ 250.⁰⁰

Cost of sanding and/or salting per application \$ 65.⁰⁰

445

Parking Lot 3: McLeod County Health and Human Services, 1805 Ford Avenue

Lump sum per time for light snow falls \$ 110.⁰⁰

Lump sum per time for heavy snow falls \$ 210.⁰⁰

Cost of sanding and/or salting per application \$ 65.⁰⁰

385

Parking Lot 4: McLeod County Courthouse East Parking Lot (large lot across from Courthouse parking lot - south of Glencoe Oil Company)

Lump sum per time for light snow falls \$ 110.⁰⁰

Lump sum per time for heavy snow falls \$ 170.⁰⁰

Cost of sanding and/or salting per application \$ 50.⁰⁰

330

Parking Lot 5: McLeod County Courthouse (Employee and Handicapped Parking)

Lump sum per time for light snow falls \$ 45.⁰⁰

Lump sum per time for heavy snow falls \$ 85.⁰⁰

Cost of sanding and/or salting per application \$ 20.⁰⁰

(150)

Parking Lot 6: McLeod County Courthouse (Sheriff's parking lot on west side of Law Enforcement Center and Sally Port Driveway)

Lump sum per time for light snow falls \$ 45.⁰⁰

Lump sum per time for heavy snow falls \$ 85.⁰⁰

Cost of sanding and/or salting per application \$ 20.⁰⁰

(150)

Parking Lot 7: McLeod County Parking Lot south of Law Enforcement Center
Gravel lot on corner of Ives and 10th Street, south side of 10th Street
Glencoe, MN 55336

Lump sum per time for light snow falls \$ 25.⁰⁰

Lump sum per time for heavy snow falls \$ 40.⁰⁰

(65)

Name of Company Newbarth Lawn Care + Landscaping

Authorized Signature [Signature]

Address 10627 Hwy 22 (P.O. Box 185) Glencoe, MN. 55336

Telephone Number 320-864-3296

Email Address newbarthlandscape@yahoo.com

Date 10-11-13

Total \$1,920

Hometown Landscape

BASE BID PRICING

Parking Lot 1: McLeod County North Complex, 2391 Hennepin Avenue N.

Lump sum per time for light snow falls \$ 150.00

Lump sum per time for heavy snow falls \$ 190.00

Cost of sanding and/or salting per application \$ 70.00

410

Parking Lot 2: McLeod County Annex Building, 2397 Hennepin Avenue N.

Lump sum per time for light snow falls \$ 240.00

Lump sum per time for heavy snow falls \$ 300.00

Cost of sanding and/or salting per application \$ 70.00

610

Parking Lot 3: McLeod County Health and Human Services, 1805 Ford Avenue

Lump sum per time for light snow falls \$ 90.00

Lump sum per time for heavy snow falls \$ 150.00

Cost of sanding and/or salting per application \$ 70.00

310

Parking Lot 4: McLeod County Courthouse East Parking Lot (large lot across from Courthouse parking lot - south of Glencoe Oil Company)

Lump sum per time for light snow falls \$ 85.00

Lump sum per time for heavy snow falls \$ 110.00

Cost of sanding and/or salting per application \$ 70.00

265

Parking Lot 5: McLeod County Courthouse (Employee and Handicapped Parking)

Lump sum per time for light snow falls \$ 30.00
Lump sum per time for heavy snow falls \$ 40.00
Cost of sanding and/or salting per application \$ 20.00

90.00

Parking Lot 6: McLeod County Courthouse (Sheriff's parking lot on west side of Law Enforcement Center and Sally Port Driveway)

Lump sum per time for light snow falls \$ 30.00
Lump sum per time for heavy snow falls \$ 40.00
Cost of sanding and/or salting per application \$ 20.00

90

**Parking Lot 7: McLeod County Parking Lot south of Law Enforcement Center
Gravel lot on corner of Ives and 10th Street, south side of 10th Street
Glencoe, MN 55336**

Lump sum per time for light snow falls \$ 25.00
Lump sum per time for heavy snow falls \$ 35.00

60

Name of Company Hometown Landscape + Design LLC
Authorized Signature [Signature]
Address 2712 9th St. E Glencoe MN 55336
Telephone Number 952-994-5272 1-320-864-3256
Email Address hometownlandscapeanddesign@hotmail.com
Date 10/14/13

Total \$1,785

Hjerpe Contracting, Inc.
 16246 Hwy 15 S.
 PO Box 517
 Hutchinson, MN 55350-0517

Bid Proposal & Contract	
Date	Proposal #
9/16/2013	1521

Meleod County Solid Waste Management Attn: Don 1065 5th Ave. SE Hutchinson, MN 55350	Phone #	Fax #	E-mail
	320-234-8305	320-234-7305	kurt@hjerpecontracting.com

Description	Qty	Rate	Total
Bid to furnish and install class 5 gravel on the existing pad east of the facility Furnish and install 6" of class 5 gravel on an area 150' x 280' per ton Note: The quantity included in the bid is on a per ton basis. You would only pay for the material you request. Trucks will be weighted and you will receive a weight slip for every load. MN Sales Tax	1,424	11.45	16,304.80T
		6.875%	1,120.96

Thank you for the opportunity to bid your work.

Total Bid Price

\$17,425.76

Upon signing below, both parties agree to this bid proposal.

Date: _____

Date: _____

Accepted By: _____

Accepted By: _____