

**MINUTES OF THE ST. MARTIN PARISH
CITIZEN REAPPORTIONMENT COMMITTEE MEETING APRIL 26, 2022**

The St. Martin Parish Citizen Reapportionment Committee Meeting met at 5:04 P.M., Tuesday, April 26, 2022, Carroll J. Fuselier Meeting Room, St. Martin Parish Annex Building, 301 West Port Street, St. Martinville, Louisiana.

The meeting was called to order by Chairman Kirk Sieber.

The following members were present: Kirk Sieber, Ricky Acosta, Yvette Morris (arrived at 5:08 P.M.), John Alexander, Dale Boudreaux, Terry Guidry, Robert Hollier, Michael Melancon and Randy Dore. Members absent: Donald Thibodeaux.

A motion was made by Michael Melancon and seconded by Terry Guidry to approve the minutes of the St. Martin Parish Citizen Reapportionment Committee Meeting of April 15, 2022. Motion was unanimously approved.

Chairman Sieber turned the meeting over to Consultant Mike Hefner, Chief Demographer, Geographic Planning and Demographic Services. Mr. Hefner informed members of the Committee that the three (3) minority district members met with him the previous week to make sure they were in agreement with where the new lines will be drawn. Mr. Hefner mentioned that two (2) small sections were moved back into their “current” districts and no other changes were made since the last meeting. Ms. Tangie Narcisse questioned if Attakapa Road was in District 3. Mr. Mike Hefner answered that yes, Attakapa Road is in District 3 in Plan A. No comments were made from the Committee members.

A motion was made by Robert Hollier and seconded by Terry Guidry that the Preliminary Plan A be adopted.

This motion having been submitted to a vote, the vote thereon was as follows:

District	Member	Yes	No	Abstain	Absent
1	Kirk Sieber	X			
1	Ricky Acosta	X			
2	Yvette Morris	X			
3	John Alexander	X			
4	Dale Boudreaux	X			

5	Terry Guidry	X			
6	Robert Hollier	X			
7	Donald Thibodeaux				X
8	Michael Melancon	X			
9	Randy Dore	X			

And the motion was declared adopted this 26th day of April, 2022.

A motion was made by Randy Dore and seconded by Ricky Acosta to open the Public Hearing to obtain public comments regarding St. Martin Parish Reapportionment Plan A being considered for final adoption. Motion was unanimously approved.

Chairman Sieber asked for public comment regarding proposed Plan A being considered for final adoption.

Upon requesting and hearing no comments from the audience regarding the proposed Reapportionment Plan A being considered for final adoption, the Chairman requested a motion to close the Public Hearing.

A motion was made by Michael Melancon and seconded by Dale Boudreaux that the Public Hearing be closed. Motion was unanimously approved.

A motion was made by Ricky Acosta and seconded by Robert Hollier that the Reapportionment Plan A be adopted.

This motion having been submitted to a vote, the vote thereon was as follows:

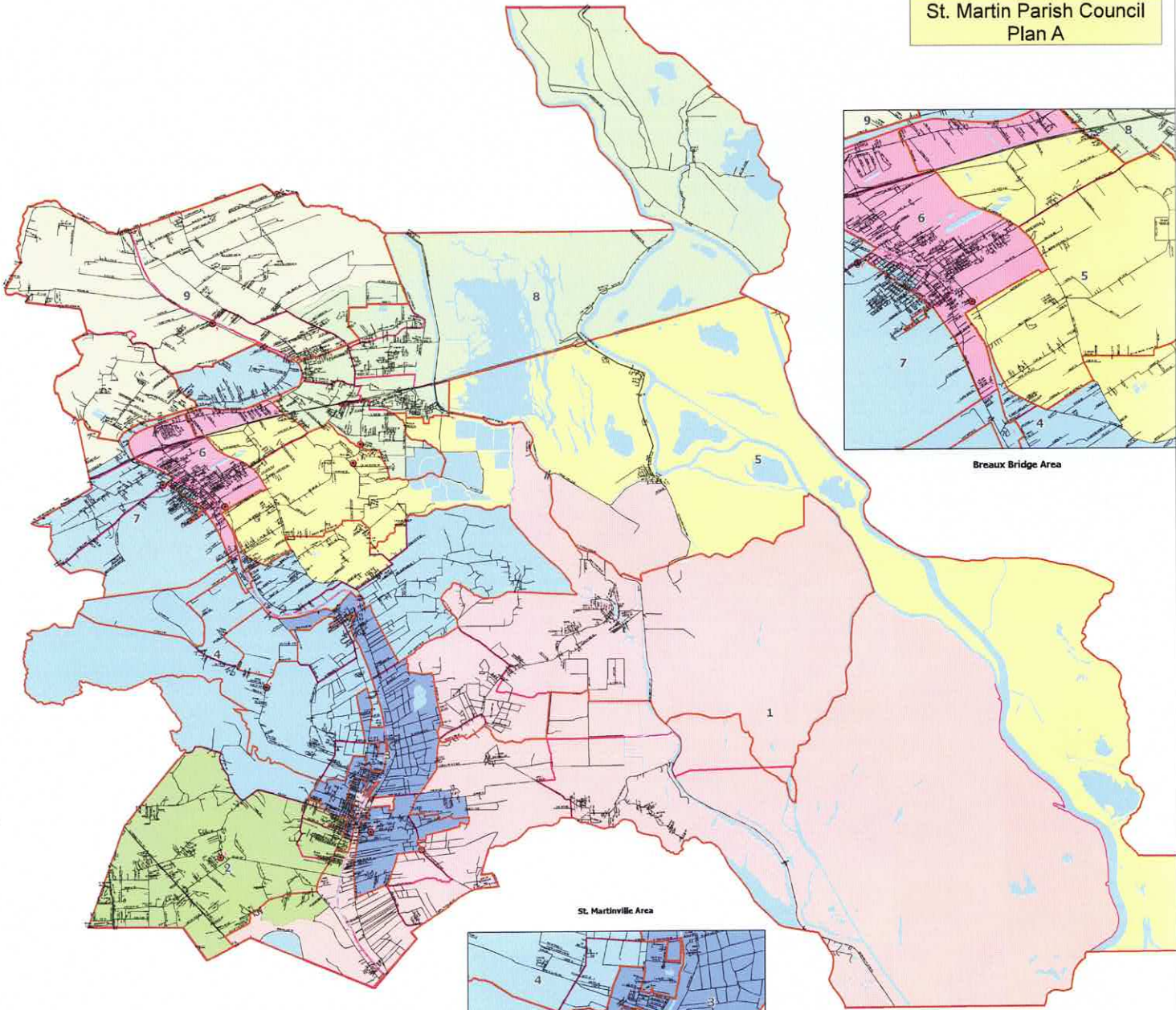
District	Member	Yes	No	Abstain	Absent
1	Kirk Sieber	X			
1	Ricky Acosta	X			
2	Yvette Morris	X			
3	John Alexander	X			
4	Dale Boudreaux	X			
5	Terry Guidry	X			
6	Robert Hollier	X			
7	Donald Thibodeaux				X
8	Michael Melancon	X			
9	Randy Dore	X			

And the motion was declared adopted this 26th day of April, 2022.

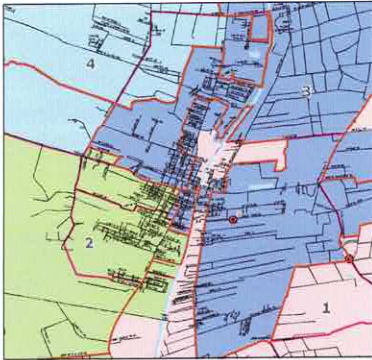
A motion was made by Michael Melancon and seconded by Randy Dore that the St. Martin Parish Citizen Reapportionment Committee does hereby adjourn. Motion was unanimously approved.

/s/ Brooke Gillespie
BROOKE GILLESPIE, SECRETARY
ST. MARTIN PARISH
CITIZEN REAPPORTIONMENT COMMITTEE

St. Martin Parish Council Plan A



Breux Bridge Area



St. Martinville Area



Lower St. Martinville Area

St. Martin Parish Council Plan A 2020 Demographics												
District	Population	Deviation	% Deviation	% White	% Black	% Hispanic	% Asian	% Other	% 18+ Pop	% 18+ Wh	% 18+ AP	% 18+ BI
1	5112	-462	-7.8%	88.4%	80.0%	3.0%	5.7%	42.1%	3901	82.3%	191	4.7%
2	2540	-203	-7.9%	35.0%	46.7%	26.6%	47.9%	4250	2026	47.2%	2066	48.0%
3	5355	-397	-7.4%	24.5%	45.8%	27.0%	50.5%	4239	2044	48.1%	2095	48.5%
4	5766	14	0.2%	43.6%	75.8%	11.1%	19.1%	4311	3316	77.1%	750	17.6%
5	5633	-120	-2.1%	40.5%	72.6%	13.7%	23.4%	4374	3177	72.8%	950	21.0%
6	6680	328	4.9%	40.2%	86.1%	17.2%	28.4%	4521	3241	71.7%	1083	23.0%
7	5765	13	0.2%	20.1%	34.9%	35.2%	61.1%	4231	1570	37.1%	2528	59.7%
8	6109	357	5.8%	45.6%	74.7%	8.1%	14.4%	4601	1555	33.8%	586	12.7%
9	8199	447	5.4%	43.8%	70.7%	15.1%	25.2%	4702	3218	72.9%	1108	23.5%
Total	51767			33.25%	64.2%	13.7%	30.5%	39404	24274	66.7%	11293	28.7%