

APPENDIX F

Educational/Promotional Materials

What Can Be Recycled:

PAPER— Use blue desk-side container or conveniently located bag stands.

Include: Newspaper, magazines, catalogs, office paper, computer paper, envelopes (without plastic windows), carbonless forms, brochures and file folders.

Do not include: Construction paper, carbon paper, hanging folders with metal, paper towels, napkins, tissues, candy/gum wrappers, paper/foam cups or stickers/decals.

Post-It-Notes, staples and paper clips are acceptable in small amounts.

CANS and BOTTLES — Use the conveniently located "Blue Bin" recycling container.

Include: Aluminum and tin cans, plastic bottles, glass bottles and glass jars.

Do not include: Light bulbs, ceramics, dishes, drinking glasses, butter tubs, microwave containers or other food containers.

Please empty and rinse containers before recycling.

OTHER RECYCLABLES

CARDBOARD—Please flatten and leave near "Blue Bin".

INK JET AND LASER PRINTER CARTRIDGES, CELL PHONES, ELECTRICAL CORDS, and RECHARGEABLE BATTERIES — Please leave in a bag or other container near the "Blue Bin".

COMPUTERS/ELECTRONICS — Please call 718-4622 ext 5381 to schedule a pickup.



More Waste Reduction Tips

- Purchase products without packaging, with less packaging, or that are packed in reusable packaging. Ask suppliers not to over package orders, but to ship in reusable/recyclable "containers".
- When planning meetings, parties or other special occasions consider making them a "zero waste" event. For example:
 1. Use reusable coffee filters instead of disposable ones.
 2. Use reusable mugs or compostable paper cups instead of disposable cups.
 3. Cut down on waste by using non-disposable dishes and utensils where practical. Paper napkins can be composted.
- Share the wealth. Before you dispose of an item check around the office to see if someone else might be able to put it to use.
- Visit the following websites for more tips on keeping your office (and home) "green":
 - www.p2pays.org
 - www.recyclenorenc.org
 - www.re3.org
 - www.recycleguys.org

For more information contact:

Lee County Solid Waste

Phone: 919-718-4622 ext 5381

E-mail: joseph.cherry@leecountync.gov

LEE COUNTY

NORTH CAROLINA

Committed Today for a Better Tomorrow

Waste Reduction and Recycling Guide

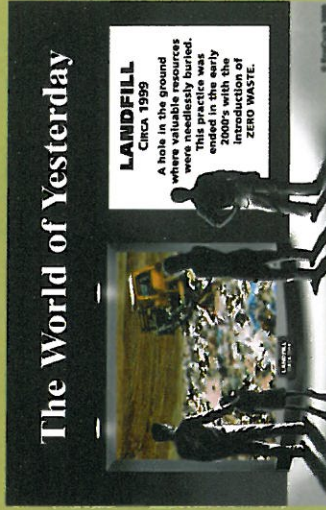


OUR CHALLENGE



Every year more than 270 million dollars worth of North Carolina's valuable resources are lost to landfills. For more than a decade, Lee County, like many other communities, has been challenged to develop a resource management infrastructure designed to reduce its reliance on land disposal. By redirecting our focus away from managing solid waste as a discard to be buried and forgotten and instead as a resource to be recaptured, we have met this challenge and are moving closer to our objective of making Lee County a sustainable community.

In 2009 Lee County, for the first time, met its waste reduction goal by realizing a 10% reduction in per capita waste generated. Please help us continue this trend by using this guide to help us "green" Lee County Government and provide a cleaner and healthier workplace.



Lee County Government has already taken steps by:

- Providing recycling containers for each office.
- Implementing a permanent computer recycling program in July, 2000. The first community in North Carolina to do so.
- Making the switch to non-toxic "green" cleaning products.
- Using low VOC (volatile organic compounds) paint and adhesives to improve indoor air quality.
- Replacing old wall-to-wall carpet with carpet tiles.

Why Reduce/Recycle Lee County Government's Waste?

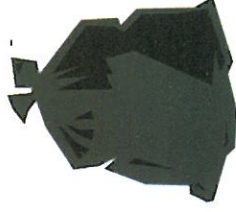
- Recycling one ton (about 2000 lbs.) of paper saves 17 trees, two barrels of oil (enough to run the average car for 1,260 miles), 4,100 kilowatts of energy (enough power for the average home for six months), 3.2 cubic yards of landfill space, and 60 pounds of pollution.
- Double sided copying can reduce paper usage by 20%.
- Beverage containers make up approx. 5% of typical office waste. Recycling 1 aluminum can, as opposed to using virgin materials, saves enough energy to run a TV for 3 hours or the equivalent of 1/2 a gallon of gasoline
- It costs nothing to reduce waste, but every ton of waste that is diverted from the landfill saves Lee County more than \$40.00.

Source: www.recycling-revolution.com/recycling-facts.html

Lee County may be a small portion of the big problem, but we have the power to effect change.

"Never doubt that a small group of thoughtful, committed citizens can change the world; indeed, it's the only thing that ever does."

—Margaret Mead



Tips for Reducing Paper Waste

The average office worker in the United States generates an estimated 10,000 sheets of paper each year. Even after recycling, 4 out of every 10 sheets still ends up in a landfill.* Help us stop the waste by making the following practices a part of your regular routine.

- Paper has 2 sides. Use both. Set computer, printer and copier default settings to 2-sided printing.
- Use the blank side of used single sided **non-sensitive** copies in your fax machine or for notes, drafts, internal correspondence or for scratch paper.
- Do you need a hard copy? Only print what you need. Do not make extra copies unless requested.
- Send information electronically. Use e-mails instead of faxes or letters when possible.
- Read e-mails and other electronically obtained materials on screen and store in an electronic file or on a CD.
- Cancel subscriptions to periodicals that aren't read as well as duplicate subscriptions that are being received.
- Share newspapers and/or magazines with co-workers.
- Reuse binders, file folders, hanging file dividers and other storage devices.
- Recycle your non-reusable office paper, newspaper, magazines and cardboard.

*Source: Minnesota Office of Environmental Assistance



Beyond Recycling

By participating in Lee County's recycling program your school has demonstrated its commitment to reducing waste in our community. But waste reduction is more than recycling. You can go beyond recycling by trying some of the following tips, and stopping waste before it starts.

- Keep a box of scrap paper (only printed on one side) for reuse. Use both sides of paper for homework, drawings, notes, tests, etc.
- Make two sided copies whenever possible. Print only the amount of documents needed; avoid making extra copies.
- Remove the school name from junk mail lists. This can be done at www.dmchoice.org.
- Collect unused school materials at the end of the school year to give to students at the beginning of the next year.
- Collect unclaimed items from lockers at the end of the year to donate or reuse next year.
- Share and route magazines or catalogs. Eliminate multiple mailings of a single magazine or catalog to the school.
- Establish a book exchange at your school where unwanted books or magazines from home or within the school may become available for others to enjoy.
- Order supplies in bulk to reduce packaging.
- Visit the following websites for more tips on keeping your school (and home) "green":

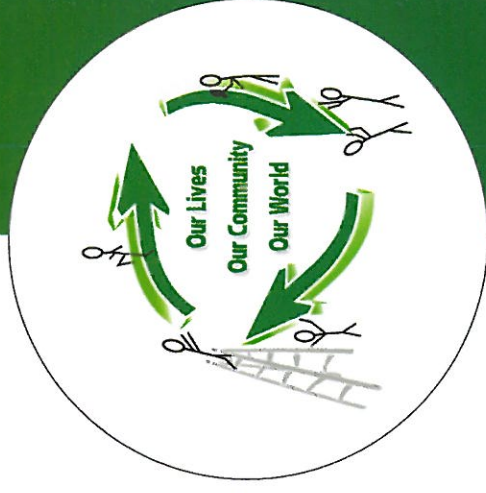
www.kidsrecycle.org
www.p2pays.org
www.recyclenorenc.org
www.re3.org
www.recycleguys.org

LEE COUNTY

NORTH CAROLINA

Committed Today for a Better Tomorrow

LEE COUNTY, NORTH CAROLINA



SCHOOL WASTE REDUCTION & RECYCLING GUIDE

For more information contact:

Lee County Solid Waste
 805 S. Fifth Street
 Sanford, NC 27330

Phone: 919-718-4622 Ext 5381

E-mail: joseph.cherry@leecountync.gov

This is a non-school material that is neither endorsed nor necessarily reflective of the views of Lee County Schools.

Funding for this brochure was provided in part through a grant from the NC Department of Environment and Natural Resources Division of Environmental Assistance and Outreach.

PAPER

YES— Paper that can be put in your blue recycling bag.



- White & colored writing paper (**no construction paper**)
- White & colored computer & copier paper
- Envelopes (**no plastic windows**)

• Carbonless Forms

• Brochures

• File Folders

• Newspaper, magazines & catalogs

Cardboard boxes and brown paper bags should be put in the specially marked dumpster.

Staples & paper clips are acceptable in small amounts.

NO—Place the following papers in your trash.

- Construction paper,
- Carbon paper
- Paper towels, napkins or tissues
- Candy/Gum wrappers.
- Cups
- Post-it-notes, Stickers or decals
- Cardboard with wax coating.

BOTTLES & CANS

Use the bottle shaped recycling containers for your empty. . .

- Aluminum drink cans
- Plastic drink bottles with one of the following symbols:



- Glass drink bottles
- Tin cans and glass jars small enough to fit in container opening.



Large tin cans and glass jars generated through the cafeteria operations should be rinsed, bagged and placed in the blue roll-out carts for collection.

Please be sure that all containers are empty before putting in bin for recycling.



OTHER

Lee County Solid Waste can also provide assistance with recycling the following items:

- Books (Hardcover and Paperback)
- Ink jet & laser printer cartridges
- Electronics (anything with a cord)
- Rechargeable batteries
- Large metal items
- Plastic containers marked as  or 
- Cooking Oil/Grease—Please put in sealed container and label it.



If you would like more information on recycling any of the above items at your school please call Lee County Solid Waste at 919-718-4622 Ext 5381.

Breathe ... Don't Burn!

*Smoke from Outdoor Fires is
Unhealthy to Breathe and
Pollutes the Air*



There are a lot of misunderstandings about outdoor or open burning in North Carolina. Some people think it's OK to burn trash in barrels because they've always done it that way. It's not. Others think it's always OK to burn leaves and branches in the fall. But that's not so in cities and counties that pick up yard waste.

The N.C. Division of Air Quality enforces the state open burning rules and many local governments have additional restrictions on outdoor fires. Violating these rules can be expensive -- with fines as high as \$25,000 or more for serious cases or repeat violations. Substantial fines can be assessed, even for minor or first-time violations.



If It Doesn't Grow, Don't Burn It

The basic message of the state open-burning rule is simple: Only leaves, branches and other plant growth can be burned – nothing else. That means no trash, lumber, tires or old newspapers. If local pickup is available, you can't burn even leaves and branches. Do not burn:

- Garbage, paper and cardboard
- Tires and other rubber products
- Building materials, including lumber and wood scraps
- Wire, plastics and synthetic materials
- Asphalt shingles and heavy oils
- Paints, household and agricultural chemicals
- Buildings, mobile homes and other structures
- Anything when the air quality forecast is Code Orange, Red or Purple

What is allowed under the law? Homeowners can burn yard trimmings if it's allowed under local ordinances, no public pickup is available and it doesn't cause a public nuisance. Yard waste must not include logs more than 6 inches in diameter and stumps. Other allowable burning includes campfires, outdoor barbecues and bonfires for festive occasions. Landowners or contractors also can burn vegetation to clear land or rights-of-way, provided that:

- Burning is done on the site of origin.
- Prevailing winds are away from built-up areas and roads. If winds are blowing towards public roads, fires must be at least 250 feet away.
- Fires are at least 1,000 feet away from occupied buildings.
- Burning is done between 8 a.m. and 6 p.m., and nothing is added outside of these hours.

Other occasions where open burning is allowed – with DAQ approval – include fires for: training fire-fighting personnel; managing forest lands or wildlife habitats; controlling agricultural diseases and pests; and disposing of materials generated by hurricanes, tornadoes and other natural disasters. You may need a permit from the N.C. Division of Forest Resources or local governments before you burn, even for allowable purposes. However, such permits do not excuse a person from following the DAQ's open-burning rules.

Smoke Can Hurt You and Others

Why does the state have such strict rules about open burning? Because smoke and soot from outdoor fires can cause serious health problems and pollute the air. Fires also can burn out of control, destroying forests and burning down homes. Smoke from a burning trash pile contains many pollutants that can cause serious health problems and damage the environment.

Although smoke from a fire may not bother you, it could be a nuisance and serious health threat for your neighbors, particularly if they have respiratory conditions such as asthma or emphysema. Potential health effects include: lung and eye irritation, headaches, dizziness, asthma attacks, coughing and even death. For more information on the health effects of pollution from open burning, see the U.S. Environmental Protection Agency's Web site, www.epa.gov/, and do a word search for "open burning."

Do not burn on "Air Quality Action Days," when forecasts are Code Orange, Red or Purple. For air quality forecasts, go to www.ncair.org or call 1(888)784-6224.

Reduce, Reuse, Recycle

A lot of open burning isn't necessary. Brush can be composted, ground up for mulch, piled up for wildlife, or just left to rot. Newspapers can be recycled. Old attic junk can be given away for someone else to reuse. By making a few sensible choices, you can reduce the amount of throw-away material you create in the first place. The possibilities are endless.

Take a look at what you've decided to burn. Isn't there something else you can do with it? For more information about reducing, reusing or recycling waste, contact the Division of Pollution Prevention and Environmental Assistance at (919) 715-6500 or www.p2pays.org.

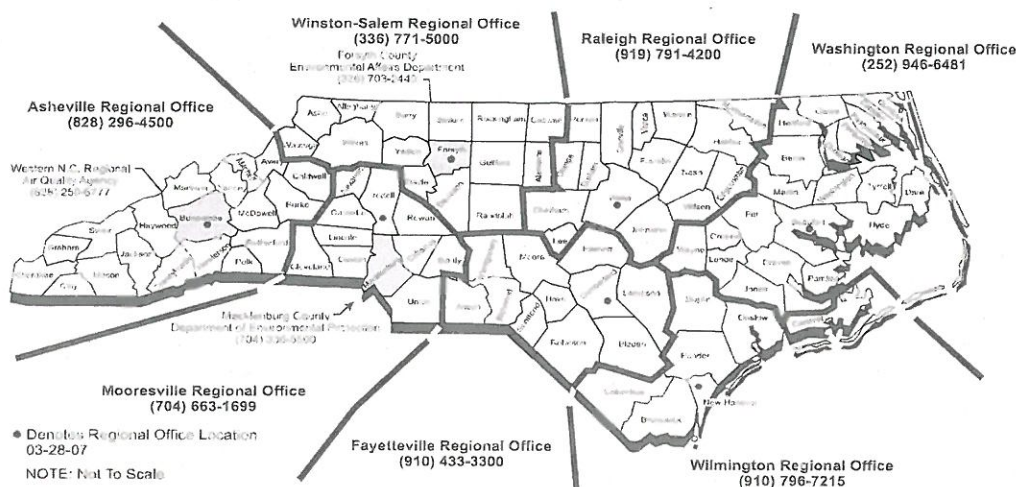
Plan Ahead

You don't need a special permit from the Division of Air Quality for allowable fires. However, you may need a permit from your town or local forest ranger. Open burning can be a nuisance, and local officials may establish rules to reduce that nuisance. Check with local officials before you burn.

Open burning that is more than 100 feet from your home and within 500 feet of a woodland normally requires a permit from the N.C. Division of Forest Resources. DFR does not charge for permits. If you want to start an outdoor fire, contact a local forest ranger to find out if and how you can get a permit. You also may contact DFR headquarters at (919) 733-2162 or visit its Web site, www.dfr.state.nc.us. The DFR is primarily concerned with fire danger, while the DAQ deals with air pollution. **Following one agency's regulations does not guarantee compliance with other agencies.**

The N.C. Division of Air Quality is part of the N.C. Department of Environment and Natural Resources. The DAQ is responsible for maintaining and improving the quality of North Carolina's air. For more information about the division and laws for protecting air quality, visit the DAQ's Web site (www.ncair.org) or call one of our regional offices shown below.

North Carolina- Department of Environment and Natural Resources Division of Air Quality - Regional Offices and Local Programs



Michael F. Easley, Governor
William G. Ross, Jr., Secretary
1(877)OPEN BURN (toll free) 1(877)673-6287

For additional copies of this brochure, contact the Division of Air Quality at (919)715-7408.
20,000 copies of this document were printed at a cost of \$903.64 or \$ 0.045 per copy. Printed on recycled paper.
December 06, 2007



GOT LEFTOVER PAINT?

Follow The "5 Point" Program for Leftover Paint

Do your part to help manage our world's natural resources better. Follow the steps listed below and you will be improving the environment by following the 3R's . . . **Reduce, Reuse, and Recycle.**



1 BUY THE CORRECT AMOUNT OF PAINT FOR THE PROJECT

Be a wise consumer and buy only what you need. Check with your local paint dealer for instructions on how to determine the correct volume of paint required for your project. When you purchase the right volume of paint, it eliminates the need to store or dispose/recycle paint when the project is finished, and it might even save you money. When your painting project is complete, take a look in the can. If there is only a small quantity of paint left, use it up. Paint out the last inch-or-two of paint in the bottom of the can.

2 STORE PAINT PROPERLY TO KEEP IT FRESH

If your project is complete and you still have a fair amount of paint leftover, be sure to correctly store the paint. Proper paint storage will eliminate safety concerns and keep your paint fresh for touch-ups or future projects. For best results, cover the opening of the paint can with plastic wrap and securely seal the lid. When you are sure the lid is leak-proof, turn the can upside down and store it in a place with a moderate room temperature to avoid freezing. Be sure to choose a safe location that is out of the reach of children and pets.

3 USE UP LEFTOVER PAINT

Now that you have safely stored your leftover paint, don't forget about it. Leftover paint can be used for touch-ups or smaller projects and lighter colors can be taken back to a paint retailer and be retinted for another paint project. Record the room name on the lid for future touch ups. You can blend and mix smaller quantities of latex paint to use as a base coat on larger jobs. Perhaps, you know a neighbor or relative who could use your leftover paint; now, that's being environmentally friendly!

4 REUSE OR RECYCLE

If you can't make use of the paint yourself, donate your useable leftover paint to a worthwhile community association, theatre company, church group or other local organizations that may be in need of good paint. Perhaps, your community offers a paint exchange event or a special paint collection program. Many communities collect paint for reuse, recycling or as a last resort, proper disposal through local Household Hazardous Waste (HHW) collection programs. Check the "Earth 911" Paint Wise web portal at www.Paint.Earth911.org or call 1-800-clean-up, to learn about paint reuse, recycling and HHW collection programs that are available in your community.

5 DISPOSE OF THE PAINT PROPERLY

If there is not a leftover paint collection program available in your area, you may need to dispose of leftover latex paint yourself. Air-drying of liquid alkyd or oil based paint is not considered safe. In regions that allow it, let your latex paint air dry in a safe location away from children and pets. A small amount of paint, less than ½ inch, in the bottom of a paint can is easily dried out by leaving the lid off. Once the paint is hard, discard the paint can with the lid off, preferably in a metal recycling program. If metal recycling is not available or the paint container is plastic, and plastic recycling is not available, dispose of the container in the garbage. Larger volumes of latex paint can be dried in a box with absorbent material such as shredded paper or kitty litter. Recycle the empty can with the lid off and dispose of the dried out latex paint as garbage. If the paint in the can is solidified all the way through, it may be disposed of as garbage with the lid off to prevent the build up of pressure in the can.

For further information on proper paint disposal, contact NPCA at 202-462-6272 or go to www.paint.org/pubs/leftover_paint.pdf.

Go to <http://earth911.org/recycling/paint-recycling/> and www.recycle-steel.org to locate paint and container recycling, as well as household hazardous waste programs in your community.

National Paint and Coatings Association 1500 Rhode Island Avenue, NW, Washington, DC 20005

Disposal of Latex Paint

Liquid wastes are restricted from municipal solid waste landfills — never throw away leftover liquid paints in your trash.

Disposal Steps

1. Unused latex paint should be poured into an absorbent material such as a cat box filler, shredded newspaper or sawdust.
2. Let it dry completely and dispose of the dried material in your regular trash.
3. In areas where recycling programs exist, save the dry, empty containers with the lids off for a steel or plastic can recycling program. Small amounts of dried residue will not hinder can recycling.
4. Wash your paint brushes and painting tools in the sink. Never clean your paint brushes near a storm sewer drain.



Disposal of Solvent-Based Paint

Solvent-based or alkyd paints require special disposal practices. Solvent-based paints are ignitable and present particular hazards. These products should not be emptied into storm sewers, household drains (especially if you have a septic tank) or on the ground.

Disposal Steps

1. Save solvent-based paints for a household hazardous waste collection program or contact your local/state government environmental protection agency for guidance on reuse or disposal of unwanted solvent-based paint products.
2. In areas where recycling programs exist, save the dry, empty containers with the lids off for a can recycling program. Small amounts of dried residue will not hinder can recycling.
3. Clean paint brushes and painting tools with paint thinner or turpentine.

Reusing Paint Thinners, Turpentine, Mineral Spirits and Solvents

Paint thinners, turpentine, mineral spirits and solvents can be reused. These products, like solvent-based or alkyd paints, should not be emptied into storm sewers, household drains (especially if you have a septic tank) or on the ground. You can reuse these types of products.

Reuse Steps

1. Put used turpentine or brush cleaners in a closed container and leave it in a safe place until the paint particles settle to the bottom.
2. Pour off the clear liquid into an empty, clean container which has a lid for reuse.
3. Add an absorbent material such as a cat box filler, shredded newspaper or sawdust to the remaining residue.
4. Let this residue dry completely before disposing of it in your regular trash.
5. In areas where recycling programs exist, save the dry, empty containers with the lids off for a steel can recycling program. Small amounts of dried residue will not hinder steel can recycling.

Recycling Paint and Aerosol Containers

Paint and aerosol containers that are composed of high-grade steel can be recycled in a steel can recycling program. Paint containers made of Polyethylene Terephthalate (PET resin SPI code 1) and High Density Polyethylene (HDPE resin SPI code 2) plastic are also recyclable in many communities. Check with your local/state government to determine whether steel and other materials may be recycled in your community.

Recycling Steps

1. To recycle paint containers, make sure they are empty and dry. A thin layer of dried paint on the bottom and sides of the can is usually acceptable.
2. In order to recycle paint can lids, just remove them from the container.
3. To recycle empty aerosols, do not puncture, crush or incinerate the can. You do not have to remove the nozzle of the spray cans for recycling, but do remove the aerosol caps, which are generally made of plastic.

APPENDIX G

Electronics Recycler Certifications



ACCESSIBLE UNDERSTANDABLE REGISTRATION

CERTIFICATE OF REGISTRATION

AQA International, LLC attests that

Synergy Recycling LLC

320 South Gibson Drive
Madison, North Carolina 27025

with a scope of :

Single Source Service in Removal of Excess and Obsolete Electronic Equipment, Specializing in all Phases Including Collecting, Processing, and Recycling of Such Materials

**The organization is found to be in conformance with all requirements of the
Responsible Recycling® Standard.**

Responsible Recycling® (R2):2008

*"The organization has been audited by a certification body that is in conformance with
ISO/IEC 17021 requirements and applicable ANAB requirements."*

Certificate No.: US00011833

Initial Registration: 05/10/2011

Registration Date: 05/10/2011

Expiration Date: 05/09/2014

Last Modified: 05/10/2011

CEO, AQA INTERNATIONAL



ACCESSIBLE UNDERSTANDABLE REGISTRATION

CERTIFICATE OF REGISTRATION

AQA International, LLC attests that

Synergy Recycling LLC

320 South Gibson Drive
Madison, North Carolina 27025

with a scope of :

Single Source Service in Removal of Excess and Obsolete Electronic Equipment, Specializing in all Phases Including Collecting, Processing, and Recycling of Such Materials

**The organization is found to be in conformance with all requirements of the
Recycling Industry Operating Standard®**

RIOS:2006

*"The organization has been audited by a certification body that is in conformance with
ISO/IEC 17021 requirements and applicable ANAB requirements."*

Certificate No.: US00011834
Initial Registration: 05/10/2011
Registration Date: 05/10/2011
Expiration Date: 05/09/2014
Last Modified: 05/10/2011

CEO, AQA INTERNATIONAL

RIOS
RECYCLING INDUSTRY
OPERATING STANDARD

World Headquarters
501 Commerce Drive, NE
Columbia, SC 29223 USA
www.aqainternational.com





ACCESSIBLE. UNDERSTANDABLE. REGISTRATION

CERTIFICATE OF REGISTRATION

AQA International, LLC attests that

Synergy Recycling LLC
320 South Gibson Drive
Madison, NC 27025

with a scope of :

Single Source Service in Removal of Excess and Obsolete Electronic Equipment,
Specializing in all Phases of Collecting, Processing and
Recycling of Such Materials

has established a Quality Management System that is in conformance
with the International Quality System Standard

ISO 9001:2008

*"Further clarifications regarding the scope of this certificate and the applicability of
ISO 9001:2008 requirements may be obtained by consulting the organization."*

Certificate No.: US00011955
Initial Registration: 07/23/2009
Registration Date: 06/09/2011
Expiration Date: 07/22/2012
Last Modified: 06/09/2011

CEO, AQA INTERNATIONAL

World Headquarters
501 Commerce Drive, NE
Columbia, SC 29223 USA
www.aqainternational.com





ACCESSIBLE UNDERSTANDABLE REGISTRATION

CERTIFICATE OF REGISTRATION

AQA International, LLC attests that

Synergy Recycling LLC
320 South Gibson Drive
Madison, NC 27025

with a scope of :

Single Source Service in Removal of Excess and Obsolete Electronic Equipment,
Specializing in all Phases Including Collecting, Processing, and
Recycling of Such Materials

has established an Occupational, Health and Safety Management System that is
in conformance with

OHSAS 18001:2007

Certificate No.:	US00011956
Initial Registration:	07/21/2009
Registration Date:	06/13/2011
Expiration Date:	07/20/2012
Last Modified:	06/09/2011

CEO, AQA International



ACCESSIBLE UNDERSTANDABLE REGISTRATION

CERTIFICATE OF REGISTRATION

AQA International, LLC attests that

Synergy Recycling LLC
320 South Gibson Drive
Madison, NC 27025

with a scope of :

Single Source Service in Removal of Excess and Obsolete Electronic Equipment,
Specializing in all Phases Including Collecting, Processing,
and Recycling of Such Materials

has established an Environmental Management System that is in conformance
with the International Environmental Standard

ISO 14001:2004

*"Further clarifications regarding the scope of this certificate and the applicability of
ISO 14001:2004 requirements may be obtained by consulting the organization."*

Certificate No.: US00011954
Initial Registration: 09/18/2007
Registration Date: 06/09/2011
Expiration Date: 09/17/2013
Last Modified: 06/09/2011

CEO, AQA INTERNATIONAL

World Headquarters
501 Commerce Drive, NE
Columbia, SC 29223 USA
www.aqainternational.com





CERTIFICATE OF LIABILITY INSURANCE

SYNER-1

OP ID: DX

DATE (MM/DD/YYYY)

04/02/12

THIS CERTIFICATE IS ISSUED AS A MATTER OF INFORMATION ONLY AND CONFERS NO RIGHTS UPON THE CERTIFICATE HOLDER. THIS CERTIFICATE DOES NOT AFFIRMATIVELY OR NEGATIVELY AMEND, EXTEND OR ALTER THE COVERAGE AFFORDED BY THE POLICIES BELOW. THIS CERTIFICATE OF INSURANCE DOES NOT CONSTITUTE A CONTRACT BETWEEN THE ISSUING INSURER(S), AUTHORIZED REPRESENTATIVE OR PRODUCER, AND THE CERTIFICATE HOLDER.

IMPORTANT: If the certificate holder is an ADDITIONAL INSURED, the policy(ies) must be endorsed. If SUBROGATION IS WAIVED, subject to the terms and conditions of the policy, certain policies may require an endorsement. A statement on this certificate does not confer rights to the certificate holder in lieu of such endorsement(s).

PRODUCER Scott Ins (Greensboro) 628 Green Valley Road Ste. 306 Greensboro, NC 27408 Bret Grieves-Greensboro	336-273-6599 336-273-5915	CONTACT NAME: PHONE (A/C, No, Ext): E-MAIL ADDRESS: FAX (A/C, No):
INSURED Synergy Recycling, LLC 320 S Gibson Drive Madison, NC 27025		INSURER(S) AFFORDING COVERAGE INSURER A: Seneca (A) INSURER B: Allmerica Financial Benefit(A) INSURER C: ACCIDENT FUND INSURANCE (A-) INSURER D: Hanover Environmental (A) INSURER E: INSURER F:
		NAIC # 41840 10166

COVERAGES

CERTIFICATE NUMBER:

REVISION NUMBER:

THIS IS TO CERTIFY THAT THE POLICIES OF INSURANCE LISTED BELOW HAVE BEEN ISSUED TO THE INSURED NAMED ABOVE FOR THE POLICY PERIOD INDICATED. NOTWITHSTANDING ANY REQUIREMENT, TERM OR CONDITION OF ANY CONTRACT OR OTHER DOCUMENT WITH RESPECT TO WHICH THIS CERTIFICATE MAY BE ISSUED OR MAY PERTAIN, THE INSURANCE AFFORDED BY THE POLICIES DESCRIBED HEREIN IS SUBJECT TO ALL THE TERMS, EXCLUSIONS AND CONDITIONS OF SUCH POLICIES. LIMITS SHOWN MAY HAVE BEEN REDUCED BY PAID CLAIMS.

INSR LTR	TYPE OF INSURANCE	ADDL INSR	SUBR VWD	POLICY NUMBER	POLICY EFF (MM/DD/YYYY)	POLICY EXP (MM/DD/YYYY)	LIMITS
D	GENERAL LIABILITY <input checked="" type="checkbox"/> COMMERCIAL GENERAL LIABILITY <input type="checkbox"/> CLAIMS-MADE <input checked="" type="checkbox"/> OCCUR			000954400	03/01/12	03/01/13	EACH OCCURRENCE \$ 1,000,000 DAMAGE TO RENTED PREMISES (Ea occurrence) \$ 1,000,000 MED EXP (Any one person) \$ 50,000
D	<input checked="" type="checkbox"/> Pollution Liab. GEN'L AGGREGATE LIMIT APPLIES PER: <input type="checkbox"/> POLICY <input type="checkbox"/> PRO-JECT <input checked="" type="checkbox"/> LOC			000954400	03/01/12	03/01/13	PERSONAL & ADV INJURY \$ 1,000,000 GENERAL AGGREGATE \$ 2,000,000 PRODUCTS - COMP/OP AGG \$ 2,000,000 Emp Ben. \$ 1,000,000
B	AUTOMOBILE LIABILITY <input checked="" type="checkbox"/> ANY AUTO <input type="checkbox"/> ALL OWNED AUTOS <input type="checkbox"/> HIRED AUTOS <input checked="" type="checkbox"/> \$250 Comp <input checked="" type="checkbox"/> \$500 Coll			AWR-9052699-00	03/01/12	03/01/13	COMBINED SINGLE LIMIT (Ea accident) \$ 1,000,000 BODILY INJURY (Per person) \$ BODILY INJURY (Per accident) \$ PROPERTY DAMAGE (Per accident) \$
D	<input checked="" type="checkbox"/> UMBRELLA LIAB <input checked="" type="checkbox"/> OCCUR <input type="checkbox"/> EXCESS LIAB <input type="checkbox"/> CLAIMS-MADE DED RETENTION \$			000954500	03/01/12	03/01/13	EACH OCCURRENCE \$ 3,000,000 AGGREGATE \$ 3,000,000
C	WORKERS COMPENSATION AND EMPLOYERS' LIABILITY ANY PROPRIETOR/PARTNER/EXECUTIVE OFFICER/MEMBER EXCLUDED? (Mandatory in NH) If yes, describe under DESCRIPTION OF OPERATIONS below	Y/N	N/A	WCV 6062489	01/01/12	01/01/13	<input checked="" type="checkbox"/> WC STATU-TORY LIMITS <input type="checkbox"/> OTH-ER E.L. EACH ACCIDENT \$ 500,000 E.L. DISEASE - EA EMPLOYEE \$ 500,000 E.L. DISEASE - POLICY LIMIT \$ 500,000
A	Property Section			CMP4502497	07/18/11	07/18/12	Equipment 257,810
A	Equipment Floate			CMP4502497	07/18/11	07/18/12	

DESCRIPTION OF OPERATIONS / LOCATIONS / VEHICLES (Attach ACORD 101, Additional Remarks Schedule, if more space is required)

CERTIFICATE HOLDER

CANCELLATION

FOR INFO

For Information Only

SHOULD ANY OF THE ABOVE DESCRIBED POLICIES BE CANCELLED BEFORE THE EXPIRATION DATE THEREOF, NOTICE WILL BE DELIVERED IN ACCORDANCE WITH THE POLICY PROVISIONS.

AUTHORIZED REPRESENTATIVE

© 1988-2010 ACORD CORPORATION. All rights reserved.