

# **LATHRUP VILLAGE POLICE DEPARTMENT CRIME STATISTICS**



## **Lathrup Village Police Department**

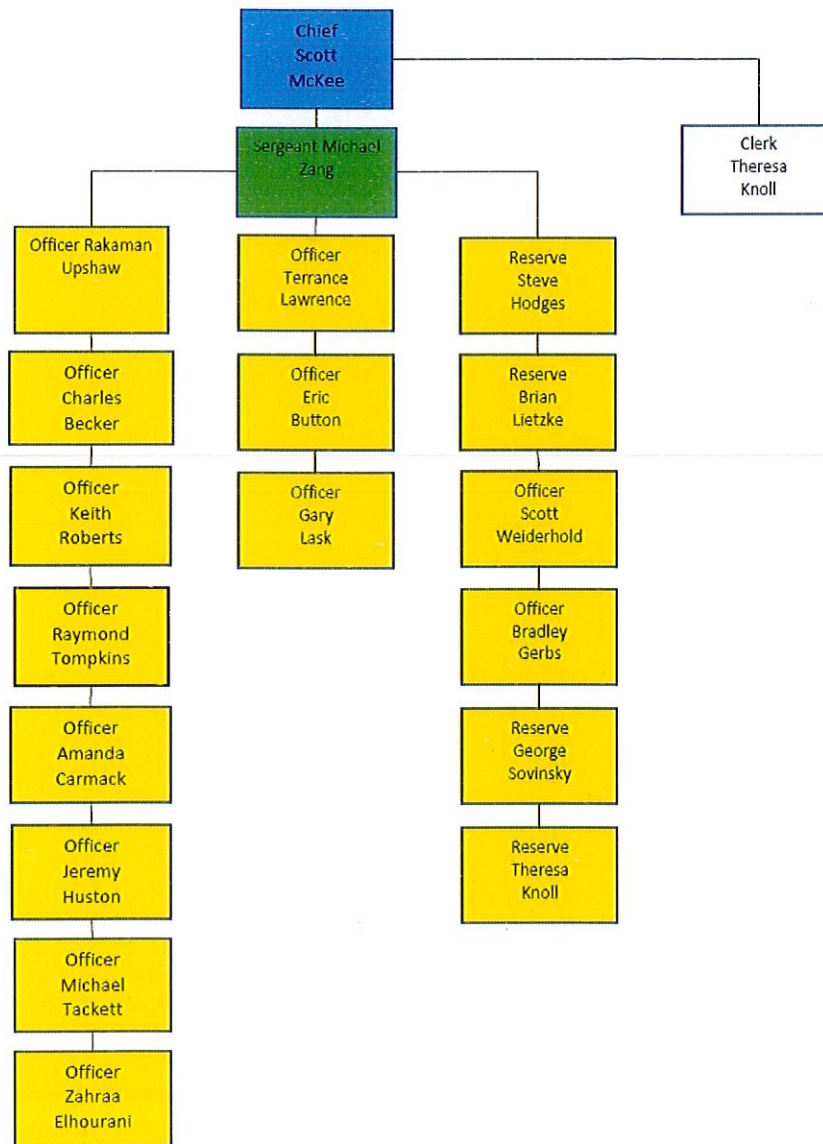
### **Mission Statement**

The mission of the Lathrup Village Police Department is to protect life and property; all rights guaranteed by law, by preserving the peace, maintaining order; controlling crime, apprehending offenders, and enforcing the law.

The Lathrup Village Police Department seeks to reduce crime and injury through preventive measures as well as immediate action in emergencies. It attempts to determine the community's needs and direct its resources toward controlling crimes that are considered most serious, frightening and economically damaging. It seeks to protect life and limb by restricting the use of force to situations of absolute necessity. It limits the exercise of authority to those functions prescribed by the laws of the United States, the State of Michigan and the City of Lathrup Village.

The Lathrup Village Police Department acknowledges that its effectiveness depends upon the acceptance of its authority and approval of its actions by the community. The Department, therefore, expects exemplary conduct of its employees; it attempts to provide, or direct the public to other sources for needed information and seeks public cooperation through the news media; and it encourages positive public reaction to its service through careful attention to complaints and service provided.

# LATHRUP VILLAGE POLICE DEPARTMENT CRIME STATISTICS



[illegible]

## DEPARTMENT TRAINING BY CATEGORY - 2020

[illegible]

# LATHRUP VILLAGE POLICE DEPARTMENT CRIME STATISTICS



	2019	2020	Percentage of Change
Part A Crime	92	72	-21.7%
Part B Crime	40	32	-20.0%
Total Reports	548	451	-17.7%

Crime is reported to the State and FBI as Part A-F offenses:

**Part A Offenses** include the following: Murder, Negligent Homicide, some Forcible and Non-Forcible Sex Offenses, Robbery, Assault, Burglary, Motor Vehicle Theft, Arson, Kidnapping, Forgery, some Frauds, some Liquor Law Violations, Embezzlement, Damage to Property, Weapon Violations, Commercialized Sexual Offenses, Drug Laws and Gambling.

**Part B Offenses** include the following: some Frauds, some Non-Forcible Sex Offenses, Non-Violent Family Offenses, OUIL, Liquor Violations, Obstruction/Escapes, Disorderly Conduct, State, Local and Federal Offenses, Local Ordinances, Juvenile Offenses and specific Traffic Offenses which are arrestable.

**Parts C, D, E, & F** Offenses include lesser offenses and response types that are not reportable as crime statistics to the state and FBI.

# LATHRUP VILLAGE POLICE DEPARTMENT CRIME STATISTICS



## Crime Statistics Reported to State and FBI

Calendar Year:	2016	2017	2018	2019	2020
Part A Offenses	118	113	109	92	72
Part B Offenses	46	45	49	40	32
Total Part A & Part B	163	158	158	132	104
Part A Change	-7.8%	-4.2%	-3.5%	-15.5%	-21.7%
Part B Change	2.2%	-2.2%	8.8%	-18.3%	-20%
Annual Change	-5.8%	-3.1%	--	-16.5%	-21.2%

## A partial breakdown of these crimes over a 5- year period:

Offense	2016	2017	2018	2019	2020
Murder	0	0	0	0	0
Aggravated Assaults	4	5	1	1	1
Simple Assaults or Intimidation	25	16	19	16	16
Robbery	1	0	3	0	2
Forcible Rape	0	0	0	1	1
Burglary	8	5	5	6	6
Motor Vehicle Thefts	1	2	2	0	3
Arson	0	1	0	0	0
Larceny Thefts	19	24	23	27	10
Narcotic Violation	13	10	8	1	1
Disorderly Conduct	2	2	0	0	0
Traffic Accidents	291	356	286	286	257



# LATHRUP VILLAGE POLICE DEPARTMENT CRIME STATISTICS



## Calls for Service

2016	2017	2018	2019	2020
5910	5491	11300	12855	12774

	2016	2017	2018	2019	2020
Total Reports Filed	504	500	601	548	451
% change	-8.07%	-0.7%	20.2%	-8.8%	-17.7%

## Yearly Accident Summary

	2016	2017	2018	2019	2020
Non-Injury Accidents	274	334	269	266	194
Injury Accidents	48	57	40	70	50
Fatal Accidents	0	1	0	0	0
Totals	322	392	309	336	244

## Overall Department Ticket Summary

	2016	2017	2018	2019	2020
Traffic Violations General	1883	1595	3235	3933	3072
Traffic Violations Motor Carrier	19	10	32	53	71
Total Violations	1902	1605	3267	3986	3143

# LATHRUP VILLAGE POLICE DEPARTMENT CRIME STATISTICS



## Lathrup Village Police Department Citizen Complaints

It is the policy of the Lathrup Village Police Department to accept and investigate any complaints of employee misconduct or wrongdoing. The complaint procedure provides citizens with a meaningful and effective avenue for legitimate complaints against a member of the Police Department. It is the intention of the Police Department to encourage public support and confidence through the assurance of a fair and thorough investigation of all complaints.

	2016	2017	2018	2019	2020
<b>Total Complaints</b>	5	2	2	2	3
<b>Excessive or Unnecessary Force/Assault Complaints</b>	0	0	0	0	0

	2016	2017	2018	2019	2020
<b>Aggressive</b>					
<b>Hostile</b>					
<b>Rude/Unprofessional</b>	2	1	1	1	3
<b>Neglect of duty</b>	1				
<b>Conduct Unbecoming</b>			1		
<b>Intimidating</b>	1				
<b>Harassing</b>					
<b>Profiling</b>	1	1			
<b>Unconsented Search</b>					
<b>Total</b>	5	2	2	2	3
<b>Complaint Disposition</b>					
<b>Written reprimand</b>	1		0	0	0
<b>Counseling/training</b>	2		0	0	1
<b>Unfounded</b>	3	2	2	1	2



# LATHRUP VILLAGE POLICE DEPARTMENT CRIME STATISTICS



## 2020 SENIORITY DISTRIBUTION

	Years of service With LVPD	Previous years of service
<b>CHIEF</b>	<b>24+</b>	<b>1</b>
<b>DETECTIVE/SERGEANT</b>	<b>13</b>	<b>0</b>
<b>OFFICERS</b>		
20+ years	22	5
14 years	15	0
12 years	11	21
09 years	9	5
06 years	6	0
05 years	5	7
05 years	5	25
03 years	3	0
02 years	2	10
02 years	2	25
<b>ADMIN</b>	<b>2</b>	<b>25</b>

Sworn Full-time Officer Seniority Average	10.22 years
Sworn Part-time Officer Seniority Average	8.3 years

# **LATHRUP VILLAGE POLICE DEPARTMENT CRIME STATISTICS**



## **RECRUITMENT EFFORTS**

- **Recruitment efforts were limited due to Covid-19**
- **All job fairs and expos were cancelled due to Covid-19 and social distancing requirements**
- **We relied on local police academies to refer qualified candidates interested in Lathrup Village Police Department**