

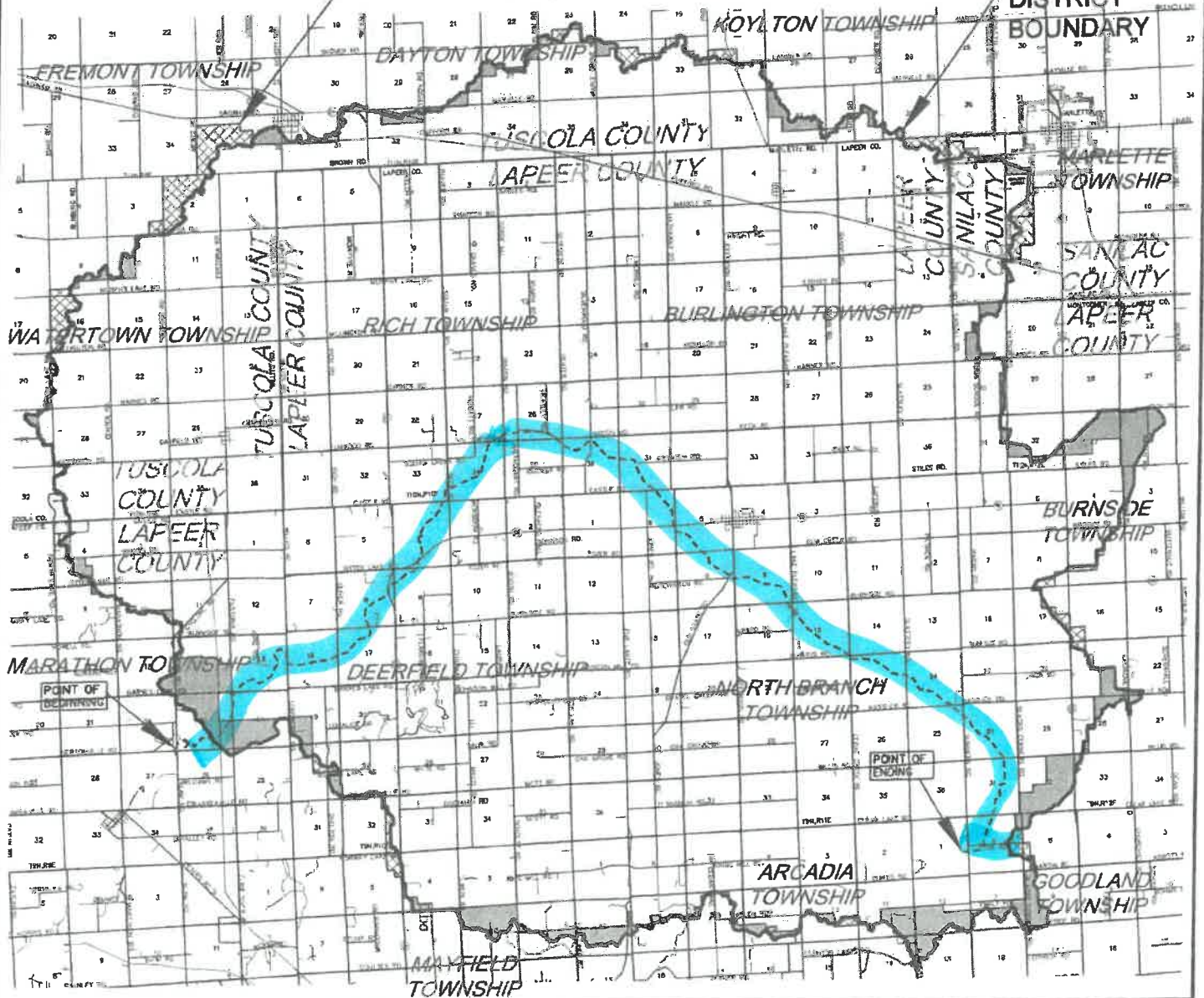
NORTH BRANCH OF THE FLINT RIVER INTERCOUNTY DRAIN DRAINAGE DISTRICT

LANDS ADDED AND REMOVED DRAINAGE DISTRICT




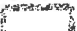



LAPEER, TUSCOLA AND SANILAC COUNTY DRAIN COMMISSIONERS
JOSEPH SUMA, ROBERT MANTEY AND GREG ALEXANDER

PREVIOUS DISTRICT BOUNDARY 24.2 MILES TOTAL

CORRECTED DISTRICT BOUNDARY



LEGEND

-  DRAINAGE DISTRICT BOUNDARY
-  DRAIN
-  MUNICIPAL BOUNDARIES
-  COUNTY BOUNDARIES
-  ROADS
-  LANDS PROPOSED TO BE ADDED
-  LANDS PROPOSED TO BE REMOVED

