

Lapeer County Parks & Recreation Plan

2022-2026

Draft



Acknowledgements

Lapeer County Commissioners

District 1 – Brenden Miller
District 2 – Gary Roy
District 3 – Dyle Henning
District 4 – Lenny Schneider
District 5 - Rick Warren
District 6 - Linda Jarvis
District 7 - Bryan Zender

Lapeer County Controller

Quentin Bishop, County of Lapeer Administrator/Controller
Doreen Clark, Assistant to the County Controller/Administrator

Lapeer County Parks

John Bustle, Building & Grounds/Parks Director
Larry Saltzman
Julie Springsteen



Table of Contents

Introduction.....	4
Community Description.....	5
Administrative Structure.....	11
Recreation Inventory.....	15
Description of the Planning and Public Input Process.....	30
Goals and Objectives.....	43
Action Program.....	46
Participating Communities.....	47
Oregon Township.....	49
City of Lapeer.....	52
Lapeer Township.....	72
Goodland Township.....	76
Elba Township.....	82
Appendix.....	88

Maps

2020 U.S. Census Population Census Results	6
Lapeer County Recreation Areas.....	21
Lands Open to Public Hunting.....	22
Lapeer State Game Area.....	23
Lapeer County Recreation Areas & Population Density.....	32
Participating Communities.....	48
Oregon Township.....	49
City of Lapeer.....	52
Lapeer Township.....	72
Goodland Township.....	76
Elba Township.....	82

1. Introduction



This plan is intended to provide guidance towards the decision-making process for Lapeer County Parks & Recreation during the next five years. This plan will provide details and updates on all park, recreation lands and other open space located in Lapeer County as well as it's participating communities.

In this Section

- **Community Description**
- **Demographics**
- **Historic Resources**

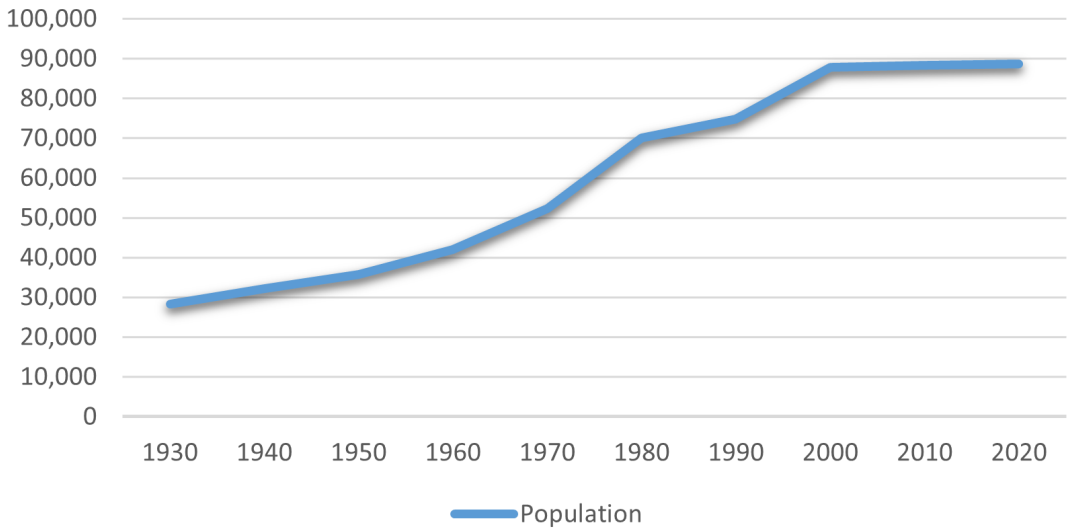
Community Description

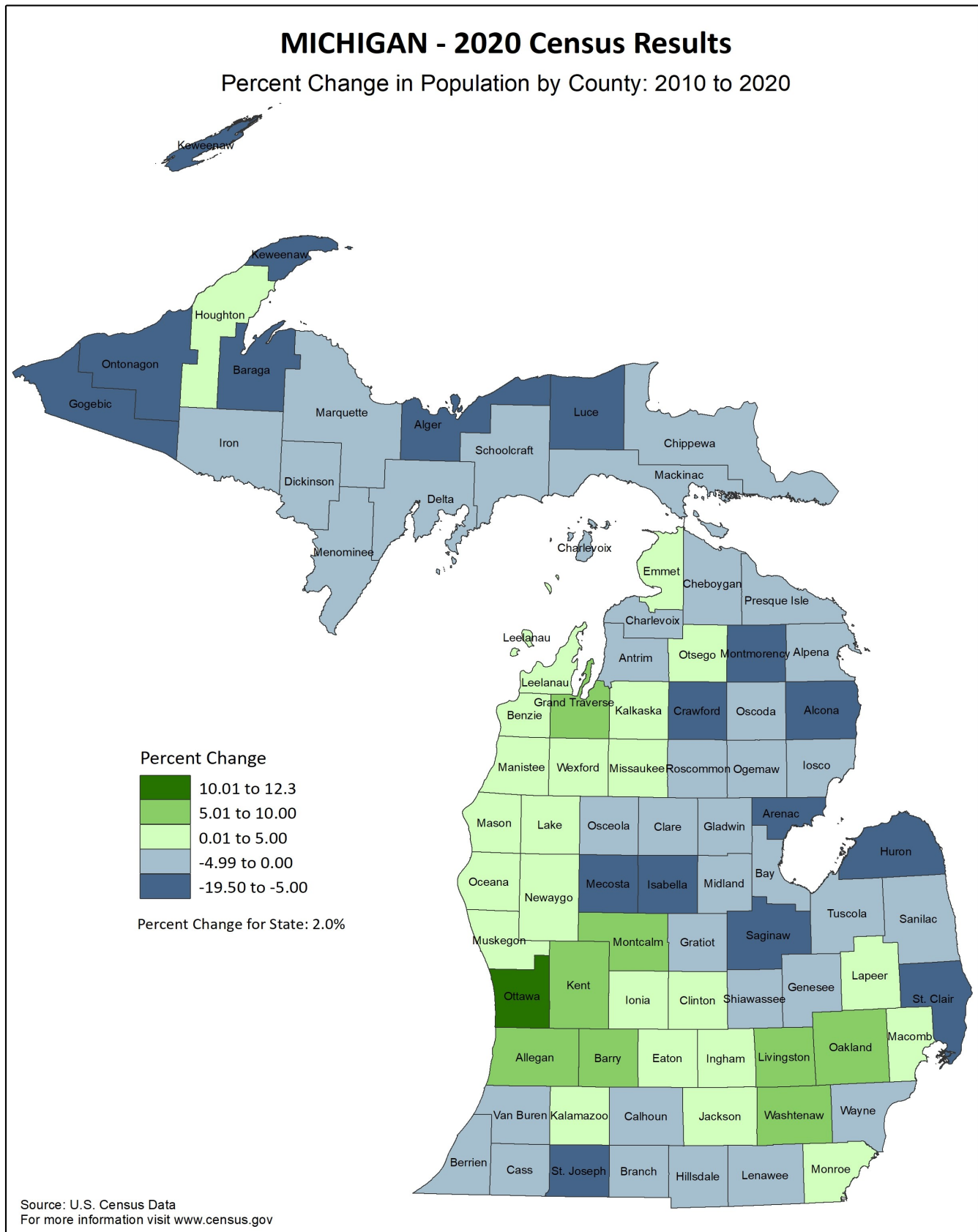
Lapeer County is located in the southeast-central region of Michigan and covers 654 square miles. The 2020 Census indicates a population of approximately 88,619 residents at an average of 136 persons per square mile. There are eighteen townships, two cities, and six villages within the boundaries of Lapeer County.

The County has retained much of its rural character, although more and more urbanizing influences can be seen, primarily south of Lapeer. Due to its close proximity to Oakland County and regional access provided by I-69, M-90, M-24, and M-53, growth in Lapeer County is expected to continue at a moderate pace. Retirees and others seeking a retreat from more heavily developed areas in southeast Michigan will continue to play a significant role in the County's development.



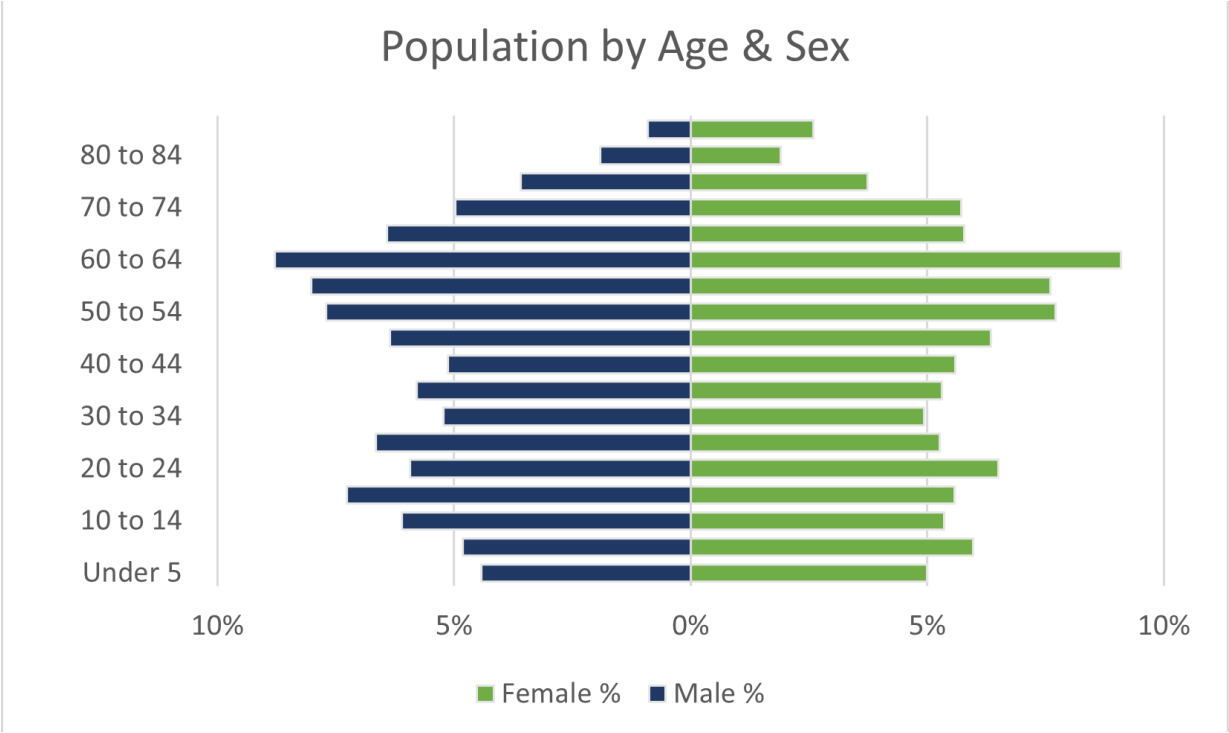
Population from 1930 - 2020





Demographics

Based on 2019 Census data, Lapeer County population by Age favors Baby Boomers with 50-64 year old's making up 24% of the population. The 18 and under Gen Z population makes up 20% of the total population. The population pyramid below shows Lapeer County's population by Age & Sex.



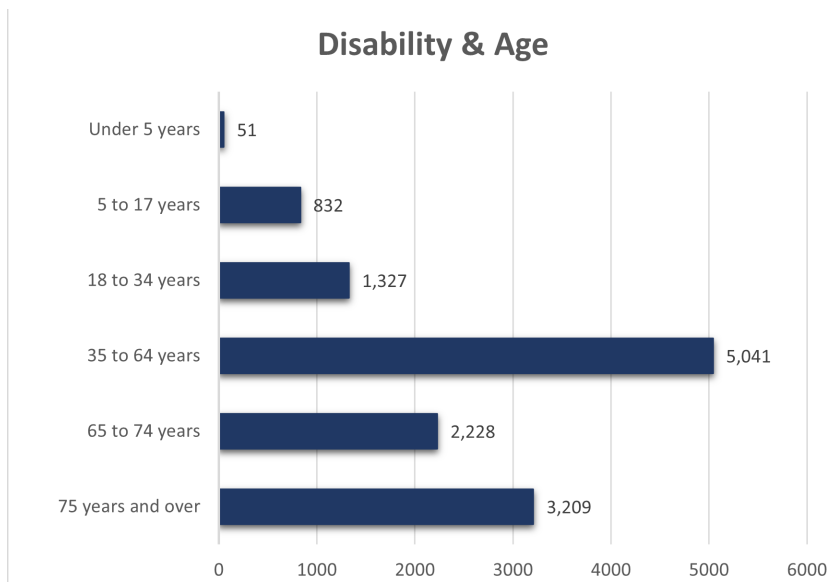
According to the 2019 Census data, Lapeer County's population is 95% White, 1.4% African American and 1.8% identified by two or more races.

Population By Race		
Demographic	Total	Percentage
White	83,183	95.0%
African American	1,264	1.4%
American Indian and Alaska Native	165	0.2%
Asian	625	0.7%
Native Hawaiian and Pacific Islander	-	0.0%
Other	830	0.9%
Two or more races	1,540	1.8%

Demographics

Population & Disabilities

In 2019, there was an estimated total of 14.8% of the population in Lapeer County diagnosed with a disability. 57% of Lapeer County’s population under the age of 65 is listed with a disability. While 43% of the population 65 and over is listed with a disability . This equals approximately 12,688 people with a documented disability.



Transportation

Lapeer County has regional access provided by state and interstate highways I-69, M-90, M-24 and M-53. The Greater Lapeer Transportation Authority (GLTA) commenced operation in March 1987 as a nonurban demand-response transit system. GLTA is a political subdivision of its incorporators, and serves the same geographic area: the City of Lapeer and the townships of Elba, Lapeer, Mayfield, Deerfield, and Oregon (Lapeer County, Michigan). Additionally, GLTA has the authority, by statute, to provide service throughout the county. GLTA is governed by a 8 member Board of Directors and is managed by an executive director.

It is the mission of GLTA to provide safe, affordable and reliable transportation service to all residents in the service area. To work on a continuous basis on improvements that will benefit our riders.



Historic Resources

There are 27 Places of Historical Significance, including three historic districts in Lapeer County that are listed on the National Register of Historic Places. These sites provide a valuable resource for interpreting the physical and cultural influences affecting early settlements in the County. One of the most notable of these sites is the Lapeer County Courthouse, which is the oldest courthouse building still in use in Michigan. The Lapeer County Courthouse was built in 1846 by Alvin Hart and it still serves its original purpose today.

Name	Location	Period of Significance	NRHP listing
Historic Districts			
West St. Clair St. Historic District	Almont	1850-1875, 1875-1899, 1900-1924	1986
Dryden Community Country Club— General Squier Historic Park Complex	Dryden	1850-1874, 1900-1924	1986
Piety Hill Historic District	Lapeer	1825-1849, 1850-1874, 1875-1899, 1900-1924	1985
Metamora Crossroads Historic District	Village of Metamora	1850-1874, 1875-1899, 1900-1924	1984
Individual Structures			
Joseph Armstrong House	Lapeer	1875-1899	1985
Currier House	Almont	1850-1874	1975
John W. Day House	Dryden	1850-1874	1987
Detroit-Bay City Railroad Company Columbiaville Depot; Columbiaville Public Library	Columbiaville	1875-1899	1984
James B. Dutton House	Lapeer	1850-1874, 1875-1899	1985
James F. Fairweather House	Imlay City	1850-1874	1985
Hadley Flour and Feed Mill	Hadley Township	1850-1874	1986
Rodney G. Hart House	Lapeer	1875-1899	1985
John & Julia Hevener House	Lapeer	1875-1899	1985
Robert A. Hungerford House	Lapeer	1875-1899, 1900-1924	1985
Lapeer County Courthouse	Lapeer	1825-1849	1971
Marguerite deAngeli Library (Lapeer District Public Library)	Lapeer	1921-1929	1999
John & Rosetta Lee House	Lapeer	1850-1874, 1875-1899, 1900-1924	1985
R. Murphy – W. Walker House	Imlay City	1875-1899, 1900-1924	1986
Charles Palmer House	Imlay City	1875-1899, 1900-1924	1987
Warren Perry House	Lapeer	1875-1899	1985
Pioneer State Bank No. 36	North Branch	1900-1924	1982
Samuel J. Tomlinson House	Lapeer	1875-1899	1985
Columbus Tuttle House	Lapeer	1875-1899	1985
Peter Van Dyke House	Lapeer	1850-1874, 1875-1899, 1900-1924	1985
William H. & Sabrina Watson House	Lapeer	1875-1899, 1900-1924, 1925-1949	1985
Jay White House	Lapeer	1875-1899, 1900-1924	1985
Younge Site	Goodland	1000-500 AD, 1499-1000 AD	1976

2. Administrative Structure



In this Section

- **Building/Grounds & Parks Administrative Structure**
- **Funding Sources**
- **Performance Measures**
- **Budget**
- **Volunteers**

Building/Grounds & Parks Administrative Structure

Roles of Commissions or Advisory Boards

From 1975 until 1999, Lapeer County Parks and Recreation was operating under a Parks and Recreation Commission established under Act 261 of 1965. In 1999, the Parks and Recreation Commission was dissolved by the Lapeer County Board of Commissioners, thereby reverting back to the Recreation and Playgrounds Act 156 of 1917. In 2003, the name of Lapeer County Parks and Recreation was officially changed to Lapeer County Parks by County Commission Resolution. In 2010, Lapeer County merged the Parks Department with Building and Grounds which are now being overseen by one director.



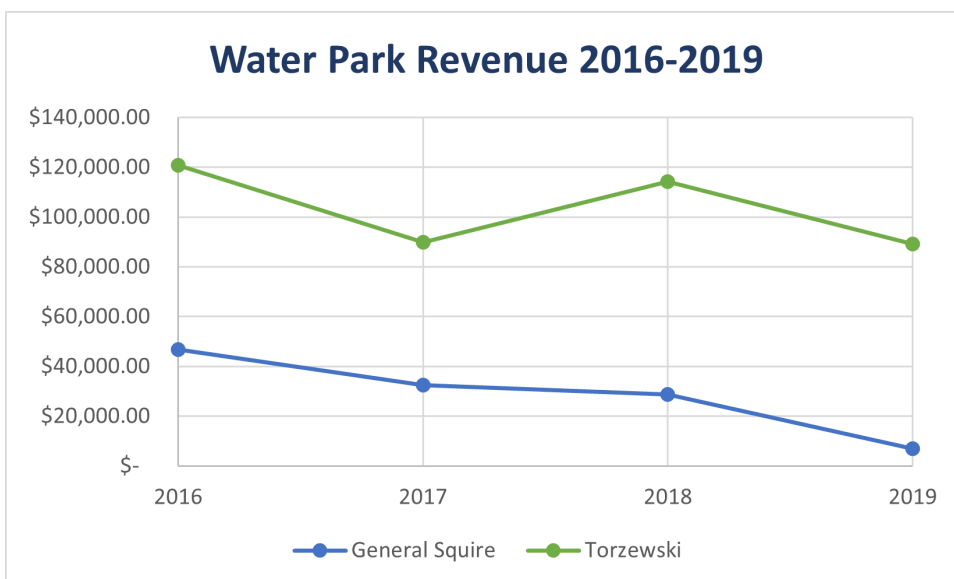
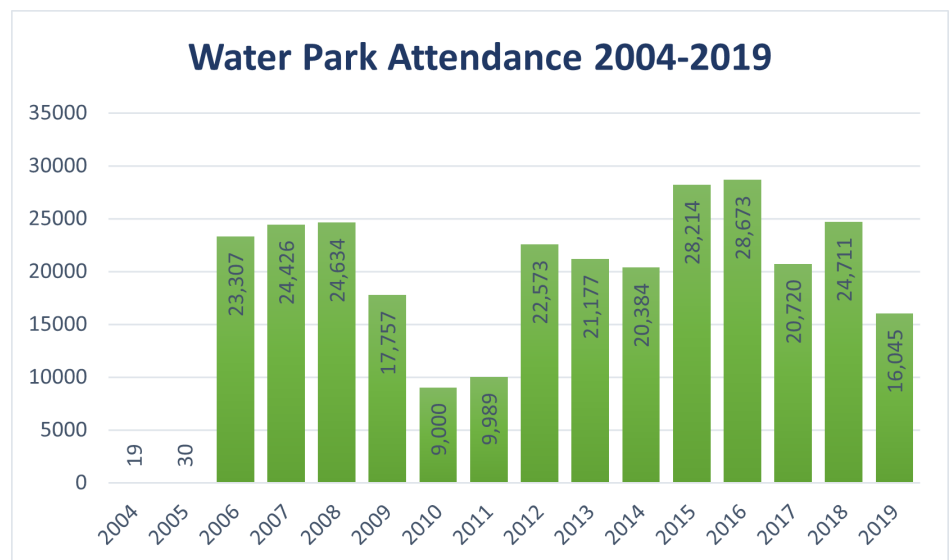
Funding and Performance Measures

Current Funding Sources

Lapper County Parks is provided funding from the revenue generated by park concessions, waterpark passes, and facility rental fees. It is a goal for Lapeer County Parks to develop parks programming to expand cooperation between local communities and to create additional funding sources.

Performance Measures

Lapeer County has developed and tracked performance measures for Torzewski and General Squier Parks from 2004 until the present. During 2016 water park attendance reached an all-time high with 28,673 patrons visiting either Torzewski or General Squier Parks. In 2019 General Squier Water park closed down due to a shortage in certified life-guards, causing the largest decline in revenue since 2011.



Annual and Projected Budgets for Operations, Maintenance, Capital Improvements and Recreation Programming
Building & Grounds/Parks Account Balances
7/30/2021

Account #	Description	Budget	Expended	Remaining	Balance
698 - Recreation Operations					
703.000	Salary, Supervisory	5,000.00	.00	5,000.00	
704.000	Salary, Employees	24,595.00	3,028.80	21,566.20	
705.000	Salary, Part-Time	52,367.00	16,085.54	36,281.46	
707.000	Salary, Overtime	.00	.00	.00	
714.000	Medicare	1,116.00	277.15	838.85	
715.000	Social Security	4,772.00	1,185.08	3,586.92	
716.000	Medical, Dental & Vision	6,750.00	.00	6,750.00	
717.000	Life Insurance	84.00	.00	84.00	
718.000	Retirement	3,197.00	454.32	2,742.68	
719.000	Unemployment Insurance	38.00	1.59	36.41	
720.000	Liability / Risk Insurance	.00	.00	.00	
722.000	Workers Compensation Insurance	1,670.00	71.61	1,598.39	
723.000	PEHB	360.00	30.00	330.00	
	Total Personnel Services	99,949.00	21,134.09	78,814.91	
728.000	Postage	.00	.00	.00	
730.000	Office Supplies	1,000.00	190.67	809.33	
730.030	Medical Supplies	500.00	.00	500.00	
730.035	Recreation Supplies	8,894.00	6,076.11	2,817.89	
730.040	Concession Inventory	9,000.00	3,427.72	5,572.28	
730.050	Visitor Control Supply	1,000.00	484.17	515.83	
730.060	Repair & Maintenance Supplies	15,000.00	11,962.32	3037.68	
743.000	Uniforms	1,000.00	682.17	317.83	
	Total Supplies	36,394.00	22,823.16	13,571.84	
813.000	Contracted Services	5,000.00	4,832.75	167.25	
850.000	Telephone	250.00	102.49	147.51	
860.000	Mileage/Pool Car	3,000.00	208.30	2,791.70	
920.000	Utilities	19,536.00	8,198.48	11,337.52	
940.000	Cost Allocation	13,011.00	6,949.32	6,061.68	
956.000	Employee Training	.00	986.00	986.00-	
	Total Other Services & Charges	40,797.00	21,277.34	19,519.66	
	Parks & Recreation Total Fund	177,140.00	65,234.59	111,905.41	

Role of Volunteers / Relationships

Flint River Watershed Coalition-Lapeer Committee

Lapeer County Parks works with the Watershed Coalition in providing labor for trash cleanup and storage facilities for equipment during off seasons.

Friends of the Historic Courthouse

The Friends of the Historic Courthouse is an advisory committee with the purpose of maintaining the integrity of the restoration, reviewing and recommending maintenance and alterations of the building, reviewing the budget for maintenance and repairs and reviewing and recommending use of the Foundation funds

Friends of the Polly-Ann Trail of Lapeer County

Lapeer County works with the Friends group to provide coordinated maintenance activities and improvement priorities on the Polly Ann Trail.

Dryden Historical Society

Lapeer County Parks allows the third floor of the Historical Mill to be used for storage for the Society and also allows the development of historical displays.

Lapeer Conservation District

The Lapeer Conservation District was organized in 1942 by a referendum vote of the landowners of Lapeer County. Even though it is considered an entity of state government, your local conservation district is locally led. A board of five directors is elected by a vote of residents at the annual meeting in January.

Lapeer Land Conservancy

Since 1994 Lapeer Land Conservancy, formally known as the Great Lakes Bioregional Land Conservancy, has been assisting landowners who do not want their property subdivided or developed by advising them of alternatives.

3. Recreation Inventory



In this Section

- Accessibility Assessment of Parks and Recreation Areas
- Lapeer County Recreational Inventory
- Recreation Grant History

Accessibility Assessment

Accessibility Assessment of Parks and Recreation Areas

The Michigan Department of Natural Resources (DNR) has developed a grading system to easily identify the handicap accessibility of parks and facilities, based on the ADA guidelines. The accessibility grading system uses a five point system ranging from one, (none of the facilities/park areas meet accessibility guidelines), to five, (the entire park was developed/renovated using the Principals of Universal Design).

An Americans with Disabilities Act (ADA) compliance assessment of Lapeer County's parks was conducted during the development of the 2016-2020 Parks Master Plan and reviewed again in 2021. The assessment consisted of a visual inspection of each park in regards to access and circulation in relation to the park facilities. Additional score information is listed in each facility description in prior sections of this plan.

MDNR Accessibility Grading Scale for Parks and Recreation Facilities	
Score	Quantity of Elements Meeting 2010 ADA Standards for Accessible Design
1	None
2	Some
3	Most
4	All
5	All & the facility meets the Principals of Universal Design

Lapeer County Parks Accessibility Assessment	
Recreation Area	Accessibility Score
Torzewski Park	2
General Squier Memorial Park	2
Polly Ann Trail	2
Lapeer County Historic Courthouse	4
Millville Landing Canoe Access	1
Norway Landing Canoe Access	1
Saginaw Street Canoe Access	N/A
Oxbow Campground	2

Recreation Inventory

The recreation inventory includes a narrative of each County owned or operated recreation area, a corresponding map, an inventory chart of all other known recreation areas within the County, an accessibility score, and history of past DNR Grant Assistance. The inventory chart has been expanded from previous master plans in an attempt to include all outdoor related facilities.

Torzewski Park (65 acres)



Torzewski County Park was donated by Mr. Ludwig Torzewski in 1983. The park is mostly open space, with slightly rolling fields and 10 acres of forest. The park is located on Pero Lake Road. The park consists of a boat dock for house boat rental, nature trails, horseshoe pits, softball field, sand volleyball court, covered pavilions, a covered amphitheater, and the wetlands water park which consists of a large and medium sized waterslide and two wading pools (one with a pirate ship play structure).

Accessibility assessment: Some of the park facilities meet accessibility guidelines (2). Some built public facilities are accessible, including water park facilities. Playground does not meet accessibility guidelines, nor do nature trails because of high slope and moist surface.

General Squier Memorial Park (87 acres)



In 1936, General George Owen Squier donated this park to the County. The park is on the National and State Historic registers for General Squier's accomplishments in the U.S. Military. The park is mostly wooded and consists of a three acre sledding hill, one mile of nature trails, picnic pavilions, a renovated historic mill, a small water park with two large water slides, a three season historic hall for activities, sand volleyball, horseshoe pits, and playgrounds.

Accessibility assessment: Some of the facilities meet accessibility guidelines (2). Aquatic/pavilion facilities meet accessibility guidelines; however, trails, sled hill, cottage, and historic mill do not meet accessibility guidelines.

Polly Ann Trail (20 miles)



The Polly Ann Trail in Lapeer County is a 20-mile former rail corridor from Bordman Road to Kings Mill, passing through Dryden and Imlay City. This trail connects directly to the Polly Ann Trail in Oakland County, also owned by the Michigan Department Natural Resources.

The trail is mostly undeveloped, but currently provides an ideal setting for horseback riding, hiking, mountain biking and opportunity for nature lovers - options not available to other southeast Michigan developed trail systems.

Accessibility assessment: The Polly Ann Trail meets some accessibility guidelines (2), such as in areas the trail is paved; however, the trail is mostly un-developed and not accessible in many areas.

Recreation Inventory

Lapeer County Historic Courthouse



The Lapeer County Courthouse is the oldest courthouse in Michigan which serves its original purpose. It remains a fine example of the dignified Doric style. The Lapeer County Courthouse was built by Alvin N. Hart, one of Lapeer's first settlers. Born in Connecticut in 1804, Hart came to Michigan in 1831 and platted the village of Lapeer two years later. He also served as sheriff and as a member of both houses of the state legislature. Although the date in the pediment, 1839, marks the construction of the County's first courthouse, this building was erected in 1845-46 and bought by the County in 1853. It is an impressive Greek revival structure. The two-story exterior is of native white pine, supported by a brick foundation. The facade of the full-height portico has four fluted Doric columns supporting the pediment. A three-tiered tower rises at the rear of the building. Available for rental for banquets, receptions and events, the courthouse is operated and maintained by the Building & Grounds / Parks Department.

Accessibility assessment: The historic courthouse makes all the necessary accommodations for accessibility (4).

Millville Landing Canoe / Kayak Access



Millville Landing Canoe Access is located on cross roads of Millville Road. and Plum Creek Road. The property was donated by Mr. and Mrs. Goward in memory of Jack E. Vaughan and consists of a small dirt parking lot and grassy slope from the lot to the South branch of the Flint River.

Accessibility assessment: Facility does not meet guidelines (1). Rustic Area. Slope to river is somewhat high, may meet guidelines, but not for surfacing.

Norway Landing Canoe / Kayak Access



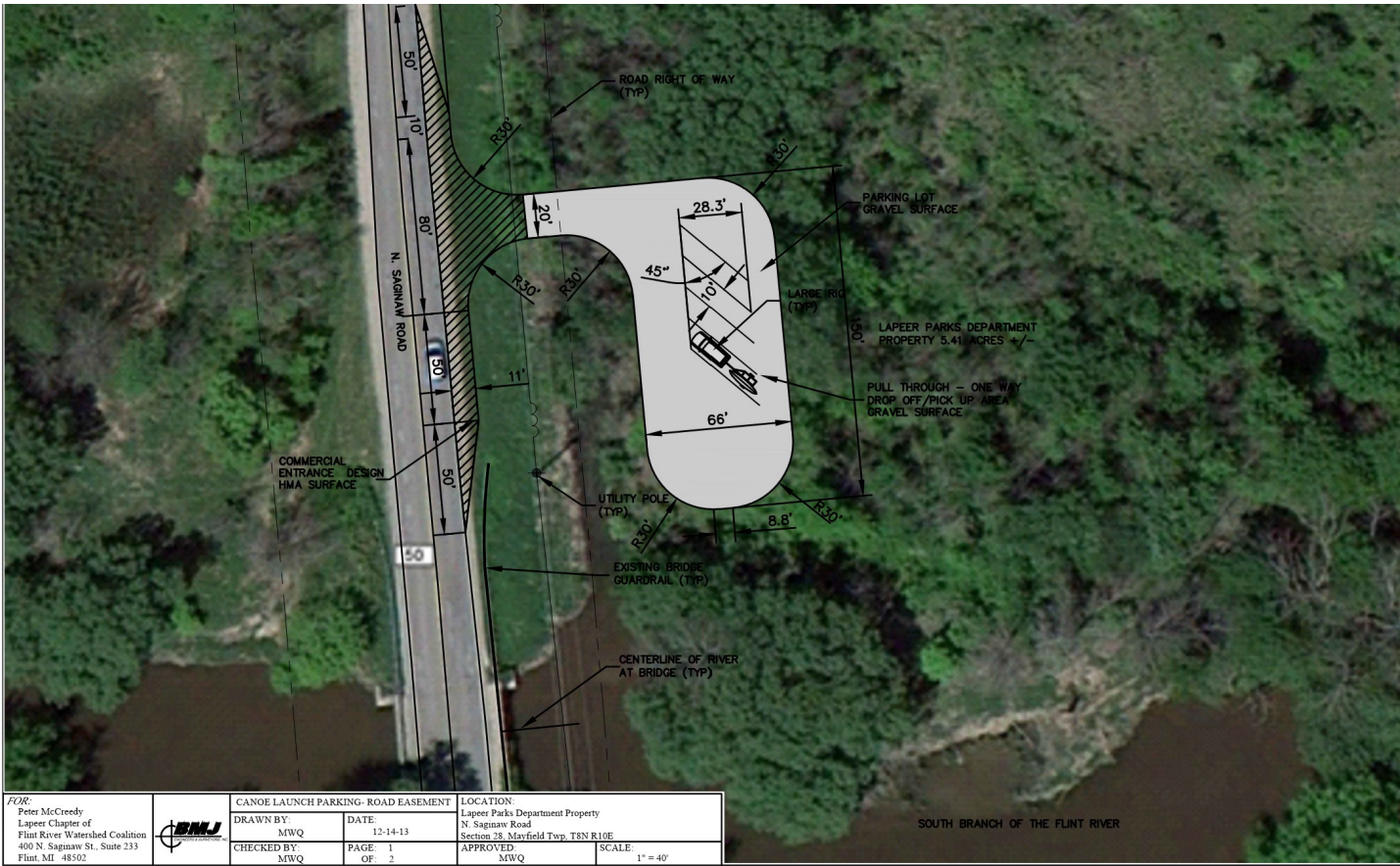
The Norway Landing Canoe Access is located on Norway Lake Road. within the Lapeer State Game Area and is currently maintained by Lapeer County Parks. The area consists of a small dirt and grass parking lot and a steep grassy slope from the lot to the south branch of the Flint River.

Accessibility assessment: Facility does not meet guidelines (1). Rustic Area. Slope to river is very high and does not meet guidelines. Parking area is packed dirt but may contain portions that are soft or muddy. No clear accessible route from parking to river.

Recreation Inventory

Saginaw St. Canoe / Kayak Access

A canoe access site on the Flint River is proposed at Saginaw Street. north of Davis Lake Road. and south of Daley Road. Currently, Lapeer County is in the process of completing this project, the county recently installed a parking lot utilizing donated funds. Figure 3 located below shows the site plan



Oxbow Campground



Oxbow Campground is located within the Lapeer State Game Area south of the Norway Landing Canoe Access, and is operated by Lapeer County Parks. It has 10 rustic campground sites accessible by the south branch of the Flint River. It also contains vault toilets and a selfpump well for water.

Accessibility assessment: Oxbow Campground meets some of accessibility guidelines (2). The area is relatively flat and hard packed. Water pump is accessible, but toilet facilities are not.

Recreation Inventory

Regional Facilities

Lapeer State Game Area

The Lapeer State Game Area covers 13,000 acres in Oregon, Mayfield, and Arcadia Townships, in northern Lapeer County.

Metamora-Hadley Recreation Area

The Metamora-Hadley Recreation Area is located in Hadley Township. The park is 683 acres in size and has beach facilities, camping, mini-cabins, picnic area, picnic shelters, restrooms, showers, hiking trails, beach, concession, 224 campsites, store, cross country skiing, snowmobiling, and hunting.

Ortonville Recreation Area

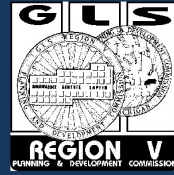
The Ortonville Recreation Area is a 4,097 acre facility that is under the jurisdiction of Oakland County, although a portion of the park is in Hadley Township. The area has a wide range of facilities including 70 campsites, bathroom and showers, picnic area, boat launch, fishing, swimming, cross country skiing, nature trails, playgrounds, and hunting.

Holloway Reservoir

A portion of the Holloway Reservoir is located in Oregon Township in Lapeer County. The reservoir is a heavily used facility for boating and water skiing. The boat launch facilities on the reservoir are under the jurisdiction of Genesee County.



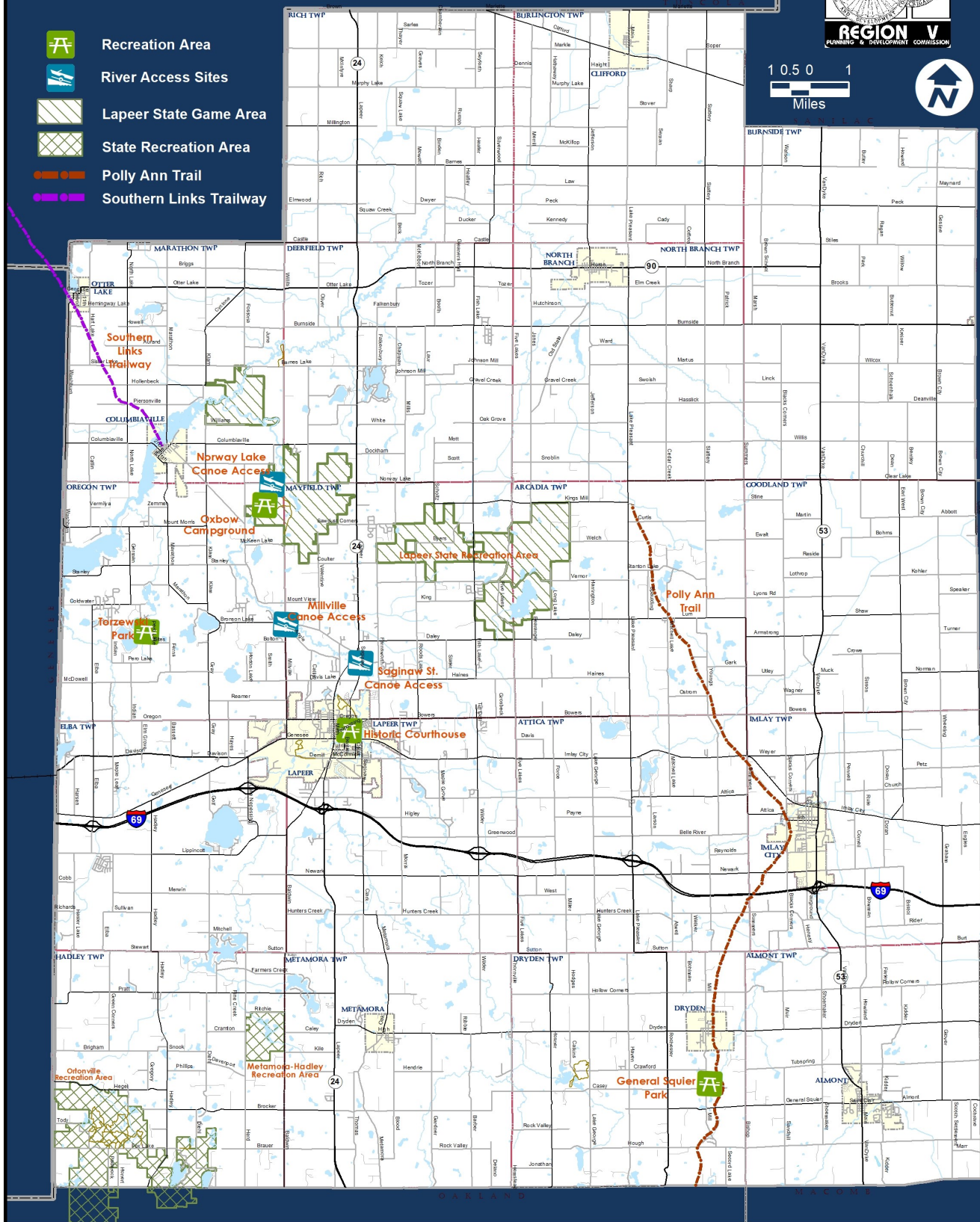
Lapeer County Recreation Areas



1 0.5 0 1
Miles

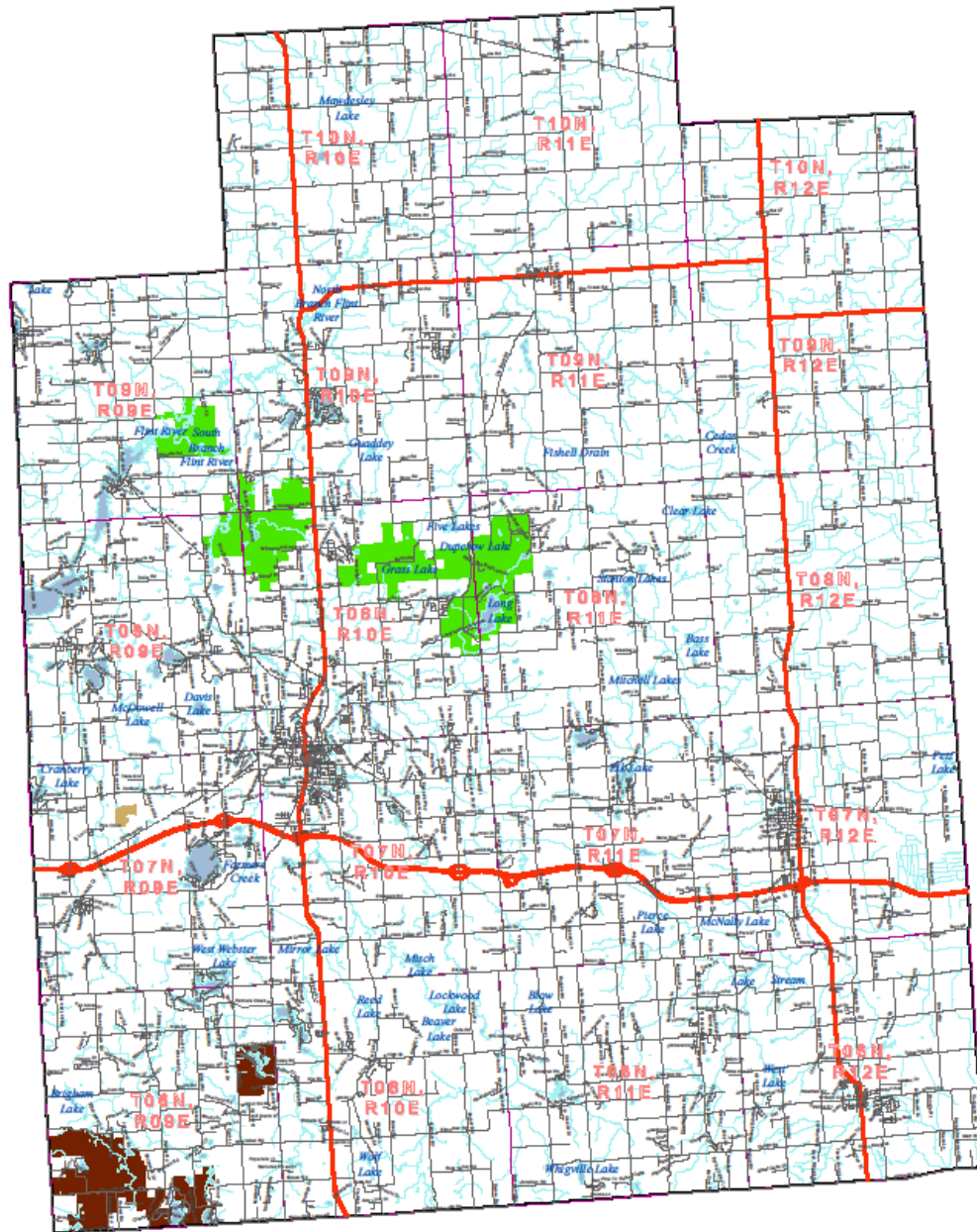


- Recreation Area
- River Access Sites
- Lapeer State Game Area
- State Recreation Area
- Polly Ann Trail
- Southern Links Trailway





Lands Open to Public Hunting LAPEER COUNTY



Map Revised: Date: 12/14/2020

Open to Public Hunting

Legend

- Highway
- Roads
- Town Range
- Streams
- Lakes and Rivers
- Other categories (Includes private lands, other - owner lands, lands closed to hunting, easements, etc.)

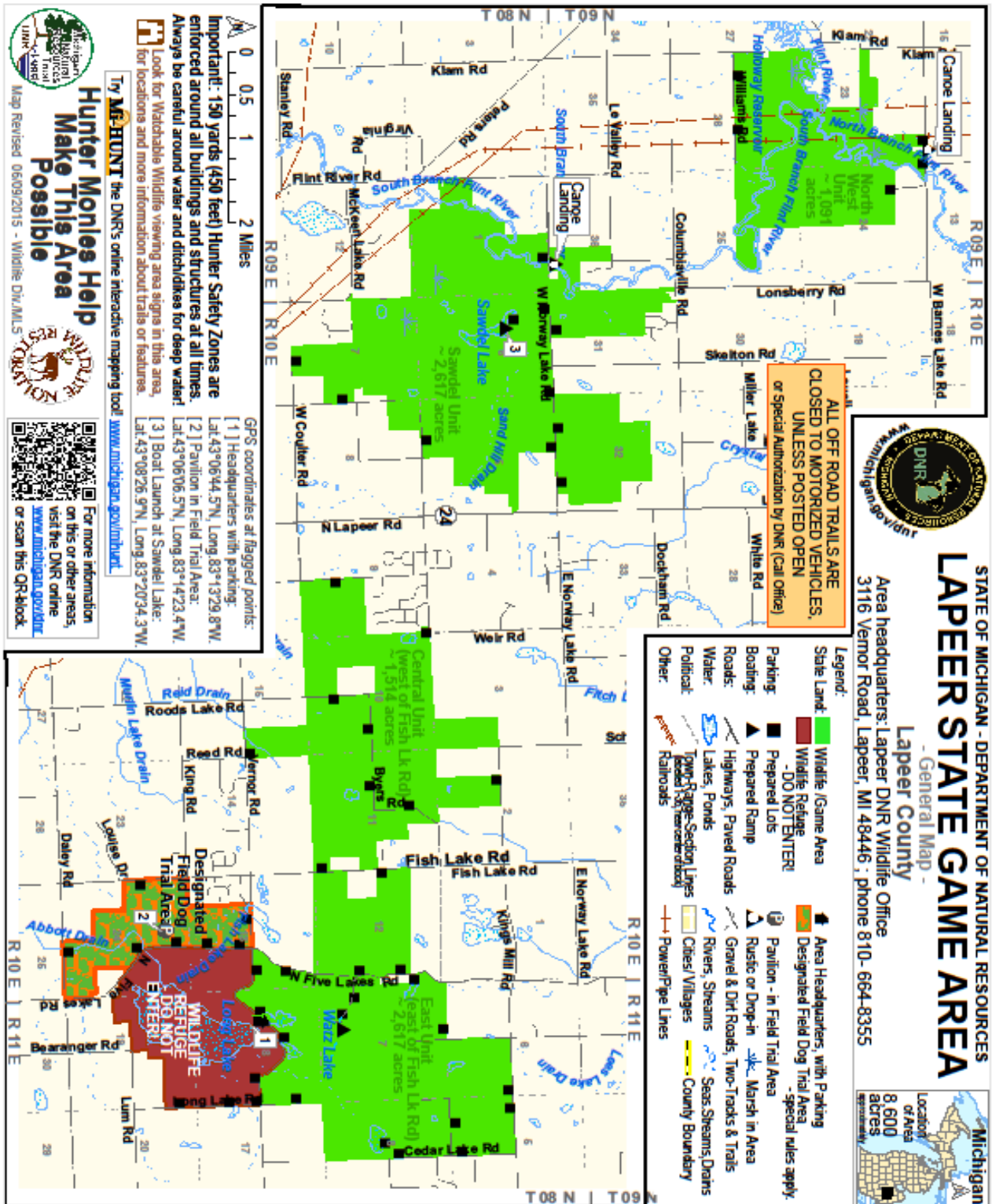
- ★ HAP (Hunter Access Program) Points
- HAP (Hunter Access Program) Polygons
- Commercial Forest Act Lands
- State Forest Land
- State Parks and Recreation Areas
- National Park Service
- US Fish & Wildlife Service
- US Forest Service

Miles 0 2.75 5.5

* See 2020-2021 Hunter Access Program Guide
www.michigan.gov/dnr

User Note:

There may be refuges that are **CLOSED** to hunting on State land. It is the responsibility of the users of this map to be aware of all rules and regulations relevant to their hunting activities and hunting locations. This map shows approximate boundaries of lands open to public hunting. This map is designed to be used for hunting trip planning purposes only, and not for legal boundary determinations. There is the potential for small areas, which are closed to hunting, to be found within the shaded boundaries of areas which are shown as open to hunting. This map is not to be used as a sole source for determining if an area is open to hunting. Not all lands depicted on this map are open for all hunting seasons or for all game species. Contact your local DNR office if you have questions or to verify regulations relating to your activities before engaging in those activities. The DNR is on the internet at www.michigan.gov/dnr.



Links available for additional information

Alcedia Twp.																																																																																																																																																																																																																																																																																																																																																																																																																																																																																																																																																																																																																																																																																																																																																																																																																																																																																																																																																																																																																																																																																																																																																																																																																																																																																																																																																																																																																			
--------------	--	--	--	--	--	--	--	--	--	--	--	--	--	--	--	--	--	--	--	--	--	--	--	--	--	--	--	--	--	--	--	--	--	--	--	--	--	--	--	--	--	--	--	--	--	--	--	--	--	--	--	--	--	--	--	--	--	--	--	--	--	--	--	--	--	--	--	--	--	--	--	--	--	--	--	--	--	--	--	--	--	--	--	--	--	--	--	--	--	--	--	--	--	--	--	--	--	--	--	--	--	--	--	--	--	--	--	--	--	--	--	--	--	--	--	--	--	--	--	--	--	--	--	--	--	--	--	--	--	--	--	--	--	--	--	--	--	--	--	--	--	--	--	--	--	--	--	--	--	--	--	--	--	--	--	--	--	--	--	--	--	--	--	--	--	--	--	--	--	--	--	--	--	--	--	--	--	--	--	--	--	--	--	--	--	--	--	--	--	--	--	--	--	--	--	--	--	--	--	--	--	--	--	--	--	--	--	--	--	--	--	--	--	--	--	--	--	--	--	--	--	--	--	--	--	--	--	--	--	--	--	--	--	--	--	--	--	--	--	--	--	--	--	--	--	--	--	--	--	--	--	--	--	--	--	--	--	--	--	--	--	--	--	--	--	--	--	--	--	--	--	--	--	--	--	--	--	--	--	--	--	--	--	--	--	--	--	--	--	--	--	--	--	--	--	--	--	--	--	--	--	--	--	--	--	--	--	--	--	--	--	--	--	--	--	--	--	--	--	--	--	--	--	--	--	--	--	--	--	--	--	--	--	--	--	--	--	--	--	--	--	--	--	--	--	--	--	--	--	--	--	--	--	--	--	--	--	--	--	--	--	--	--	--	--	--	--	--	--	--	--	--	--	--	--	--	--	--	--	--	--	--	--	--	--	--	--	--	--	--	--	--	--	--	--	--	--	--	--	--	--	--	--	--	--	--	--	--	--	--	--	--	--	--	--	--	--	--	--	--	--	--	--	--	--	--	--	--	--	--	--	--	--	--	--	--	--	--	--	--	--	--	--	--	--	--	--	--	--	--	--	--	--	--	--	--	--	--	--	--	--	--	--	--	--	--	--	--	--	--	--	--	--	--	--	--	--	--	--	--	--	--	--	--	--	--	--	--	--	--	--	--	--	--	--	--	--	--	--	--	--	--	--	--	--	--	--	--	--	--	--	--	--	--	--	--	--	--	--	--	--	--	--	--	--	--	--	--	--	--	--	--	--	--	--	--	--	--	--	--	--	--	--	--	--	--	--	--	--	--	--	--	--	--	--	--	--	--	--	--	--	--	--	--	--	--	--	--	--	--	--	--	--	--	--	--	--	--	--	--	--	--	--	--	--	--	--	--	--	--	--	--	--	--	--	--	--	--	--	--	--	--	--	--	--	--	--	--	--	--	--	--	--	--	--	--	--	--	--	--	--	--	--	--	--	--	--	--	--	--	--	--	--	--	--	--	--	--	--	--	--	--	--	--	--	--	--	--	--	--	--	--	--	--	--	--	--	--	--	--	--	--	--	--	--	--	--	--	--	--	--	--	--	--	--	--	--	--	--	--	--	--	--	--	--	--	--	--	--	--	--	--	--	--	--	--	--	--	--	--	--	--	--	--	--	--	--	--	--	--	--	--	--	--	--	--	--	--	--	--	--	--	--	--	--	--	--	--	--	--	--	--	--	--	--	--	--	--	--	--	--	--	--	--	--	--	--	--	--	--	--	--	--	--	--	--	--	--	--	--	--	--	--	--	--	--	--	--	--	--	--	--	--	--	--	--	--	--	--	--	--	--	--	--	--	--	--	--	--	--	--	--	--	--	--	--	--	--	--	--	--	--	--	--	--	--	--	--	--	--	--	--	--	--	--	--	--	--	--	--	--	--	--	--	--	--	--	--	--	--	--	--	--	--	--	--	--	--	--	--	--	--	--	--	--	--	--	--	--	--	--	--	--	--	--	--	--	--	--	--	--	--	--	--	--	--	--	--	--	--	--	--	--	--	--	--	--	--	--	--	--	--	--	--	--	--	--	--	--	--	--	--	--	--	--	--	--	--	--	--	--	--	--	--	--	--	--	--	--	--	--	--	--	--	--	--	--	--	--	--	--	--	--	--	--	--	--	--	--	--	--	--	--	--	--	--	--	--	--	--	--	--	--	--	--	--	--	--	--	--	--	--	--	--	--	--	--	--	--	--	--	--	--	--	--	--	--	--	--	--	--	--	--	--	--	--	--	--	--	--	--	--	--	--	--	--	--	--	--	--	--	--	--	--	--	--	--	--	--	--	--	--	--	--	--	--	--	--	--	--	--	--	--	--	--	--	--	--	--	--	--	--	--	--	--	--	--	--	--	--	--	--	--	--	--	--	--	--	--	--	--	--	--	--	--	--	--	--	--	--	--	--	--	--	--	--	--	--	--	--	--	--	--	--	--	--	--	--	--	--	--	--	--	--	--	--	--	--	--	--	--	--	--	--	--	--	--	--	--	--	--	--	--	--	--	--	--	--	--	--	--	--	--	--	--	--	--	--	--	--	--	--	--	--	--	--	--	--	--	--	--	--	--	--	--	--	--	--	--	--	--	--	--	--	--	--	--	--	--	--	--	--	--	--	--	--	--	--	--	--	--	--	--	--	--	--	--	--	--	--	--	--	--	--	--	--	--	--	--	--	--	--	--	--	--	--	--	--	--	--	--	--	--	--	--	--	--	--	--	--	--	--	--	--	--	--	--	--	--	--	--	--	--	--	--	--	--	--	--	--	--	--	--	--	--	--	--	--	--	--	--	--	--	--	--	--	--	--	--	--	--	--	--	--	--	--	--	--	--	--	--	--	--	--	--	--	--	--	--	--	--	--	--	--	--	--	--	--	--	--	--	--	--	--	--	--	--	--	--	--	--	--	--	--	--	--	--	--	--	--	--	--	--	--	--	--	--	--	--	--	--	--	--	--	--	--	--	--	--	--	--	--	--	--	--	--	--	--	--	--	--	--	--	--	--	--	--	--	--	--	--	--	--	--	--	--	--	--	--	--	--	--	--	--	--	--	--	--	--	--	--	--	--	--	--	--	--	--	--	--	--	--	--	--	--	--	--	--	--	--	--	--	--

Links available for additional information																																			
Ownership			Facility Name			Acres	Playgrounds	Baseball Fields	Basketball Court	Football Fields	Soccer Fields	Tennis Courts	Volleyball Courts (outdoor)	Horseshoe Pits	Swim Pool (Outdoor)	Swim Pool (Indoor)	Water Slides	Boat/Canoe Rental	Fishing Access	Pond/River/Lake Access	Boat Ramp	Bathing Beach	Camping	Trails (in miles)	Golf Course (# of holes)	Miniature Golf	Ice Skating	Sledding	Picnic Shelters	Amphitheater	Community Center	Cross County Skiing	Nature Center	Horseback Riding	
	Charter	Chaffield Elementary		1						1																									
	Private	St. Paul Lutheran School				1					1																								
	School	Prairies and Ponds																																	
	City	Linear Park Trail System																																	
	City	Crampton Park Canoe Access																																	
	City	Rotary Park Canoe Access																																	
	County	Lapeer County Historical Courthouse																		1															
Deerfield Twp.																																			
i	Private	Kings Landing R.V. Resort	40																1	1		1	80												
	Private	Crystal Creek Pines RV Park	42	1															1				104												
	Twp.	Deerfield Township Park	10	1	1																											2			
	Private	Sutter's Recreation Area	40		1									1					1			1	187								1				
Dryden Twp.																																			
i	Lapeer County	General Squier Memorial Park	87	1										2		3	1							1				1	1	4		1			
i	Non-Profit	Seven Ponds Nature Center	313																					1										1	
	School	Dryden Elementary School	6	1	1																														
	School	Dryden Jr High & Senior High School	100		1	1	1	1																											
	School	Cardinal Field	11	1	1																							1							
	Village/Twp.	Dryden Memorial Park	0.25																									1							
	Township	Dryden Township Property	10																																
Elba Twp.																																			
	Township	Elba Township Park	10.4																					0.5											
	Township	Elba Township Nature Park	23.92																					0.6											
	State	DNR Boat Launch																																	
i	Private	Hilltop Campground	9															1	1	1															
i	Private	Lake Nepessing Golf land	16.5																									18							
i	Private	Lapeer County Club	130																							18									
	Private	Elba Little League Complex																																	
Goodland Twp.																																			
	Private	Camp Michael																				Y													

Links available for additional information

		Links available for additional information																																
	Ownership	Facility Name	Acres	Playgrounds	Baseball Fields	Basketball Court	Football Fields	Soccer Fields	Tennis Courts	Volleyball Courts (outdoor)	Horseshoe Pits	Swim Pool (Outdoor)	Swim Pool (Indoor)	Water Slides	Boat/Canoe Rental	Fishing Access	Pond/River/Lake Access	Boat Ramp	Bathing Beach	Camping	Trails (in miles)	Golf Course (# of holes)	Miniature Golf	Ice Skating	Sledding	Picnic Shelters	Amphitheater	Community Center	Cross County Skiing	Nature Center	Horseback Riding			
Hadley Twp.	State	Lake Minnewanna	44															1	1															
	School	(Formerly) Hadley Elementary School			2																													
	Private	Hadley Acres Fold & Country Club																																
	State	Metamora-Hadley State Park	723	1								1				1	1	1	1	1	220	10												
	Non-Profit	Sutherland Nature Sanctuary	75																			2						1						
	State	Hadley Hills/Ortonville Rec Area																										1						
	State	Big Fish Lake		1																							1							
	State	Davison Lake																1	1															
	Private	Whispering Oaks Campground	52																			100												
Imley Twp.																																		
Imley Twp.	Imley Township Park		13	1																			1				1							
	Twp.	Soccer Fields								13																								
Lapeer County																																		
Private	State	Polly Ann Trail																				20												
Private	State	DNR State Game Areas	8,534																															
Lapeer Twp.																																		
	School	Maple Grove Elementary School		1	2	1	1																											
	Private	Evergreen Campground	2																			12												
	Public	Township Hall Park		1		1																0.75					1							
Marathon Twp.																																		
Private	State	Tibbitts Nature Sanctuary	130																			Y					1						1	
	Genesee County	Klam Road Canoe Access															1																	
Private	State	Southern Links Trail																				4.5												
Mayfield Twp.																																		
Private	Private	Home Plate Softball Fields																																
	State	Lapeer State Game Area	13,209													1	1	1	1		1	1												
	School	Lynch Elementary School		1	4																													
	School	Mayfield Elementary School		1	1																													
	School	Schickler Elementary School		1	1					1																								

Links available for additional information

Ownership	Facility Name	Acres																		
			Playgrounds	Baseball Fields	Basketball Court	Football Fields	Soccer Fields	Tennis Courts	Volleyball Courts (outdoor)	Horseshoe Pits	Swim Pool (Outdoor)	Swim Pool (Indoor)	Water Slides	Boat/Canoe Rental	Fishing Access	Pond/River/Lake Access	Boat Ramp	Bathing Beach	Camping	Trails (in miles)
Village of Clifford	Almont Community Park	5	1	1				2												
Village of Clifford	Clifford Community Park	0.5	1	1					1	1										
Village of Columbiana																				
Village of Columbiana	Marina Park	0.25															1			
Village of Columbiana	Bert Vermilya Park	1.5							1											
Village of Columbiana	Roadside Park	0.25																		
Village of Columbiana	Veterans Memorial Park																			
Village of Columbiana	Columbiana Ball Diamonds	10		4				5												
Genesee County	Columbiana Canoe Access															1				
Public	Southern Links Trail																			10
Village of North Branch																				
Village of North Branch	North Branch Village Park	1.7	2		1															
Public	North Branch High School			4		1		8												1
Public	North Branch Middle School			4			1	4	2											
Public	North Branch Elementary																			
Public	North Branch Ruth Fox Elementary																			
Private	North Branch Sports Fields																			
Private	North Branch's Lion's Field																			
Village of Otter Lake																				
Private	Genesee Otter Lake Campground	60	1						1					1	1	1			129	
Village of Otter Lake	Village of Otter Lake Campground	10	1						1						1	1		1	35	

Recreation Inventory

Hyperlink Resource

In an effort to begin working towards the goals of this plan (*identified later in this report*), a resource of currently available, known hyperlinks to additional information relating to recreation areas throughout the County have been organized into the table below. This is not intended to be an exhaustive list. It is based upon recreation areas identified in previous master plans and those that were easily accessible using prominent online search engines.

Name (Sorted alphabetically)	Links to Additional Information
Arcadia Hills Golf Course	http://www.arcadahills.com/
Big Fish Lake	https://www.michigan.gov/dnr/0,4570,7-350-79119_79146_81198_81199_85286-303394--,00.html
Camp Lael	http://www.camplael.com/
Camp Michael	http://www.campmichaelmi.com/
DNR State Game Areas	http://www.midnr.com/FLW/LandsOpen-Hunting/Hunting_Land_lapeer_COUNTY.pdf
Flint River Canoe Access Sites	http://flintriver.org/blog/chapters/lapeer-chapter/
Genesee County Parks	https://geneseecountyparks.org/explore/
Greenbrier Golf Course	www.greenbrier.com/Golf/Golf-Courses
Hill Top Campground	www.hilltopcampground.net
Imlay City Parks	https://www.imlaycity.org/residents/parks-and-recreation/
Imlay Township Park	https://www.imlaytownship.org/index.php/township-park
Lake Nepessing Golf Land	www.lakenepessinggolfand.com
Lapeer City Parks	www.ci.lapeer.mi.us/parks_and_recreation/parks.php
Lapeer Country Club	www.lapeercountryclub.com
Lapeer County Parks	https://lapeercountyweb.org/index.php/departments/parks
Lapeer Land Conservancy	http://www.lapeerlandconservancy.org/
Lum International Golf Course	http://www.castlecreekgolfclub.com/
Michigan Christian Youth Camp	http://www.mcyo.org/
Polly Ann Trail	https://pollyanntrailway.org/
Seven Ponds Nature Center	http://www.sevenponds.org/
Southern Links Trailway	http://southernlinkstrailway.com/
Six Rivers Land Conservancy	https://www.sixriversrlc.org/
Washakie TV Resort and Golf	www.washakiegolfrv.com
Wolverine Christian Service Camp	http://www.wolverinechristianservicecamp.com/

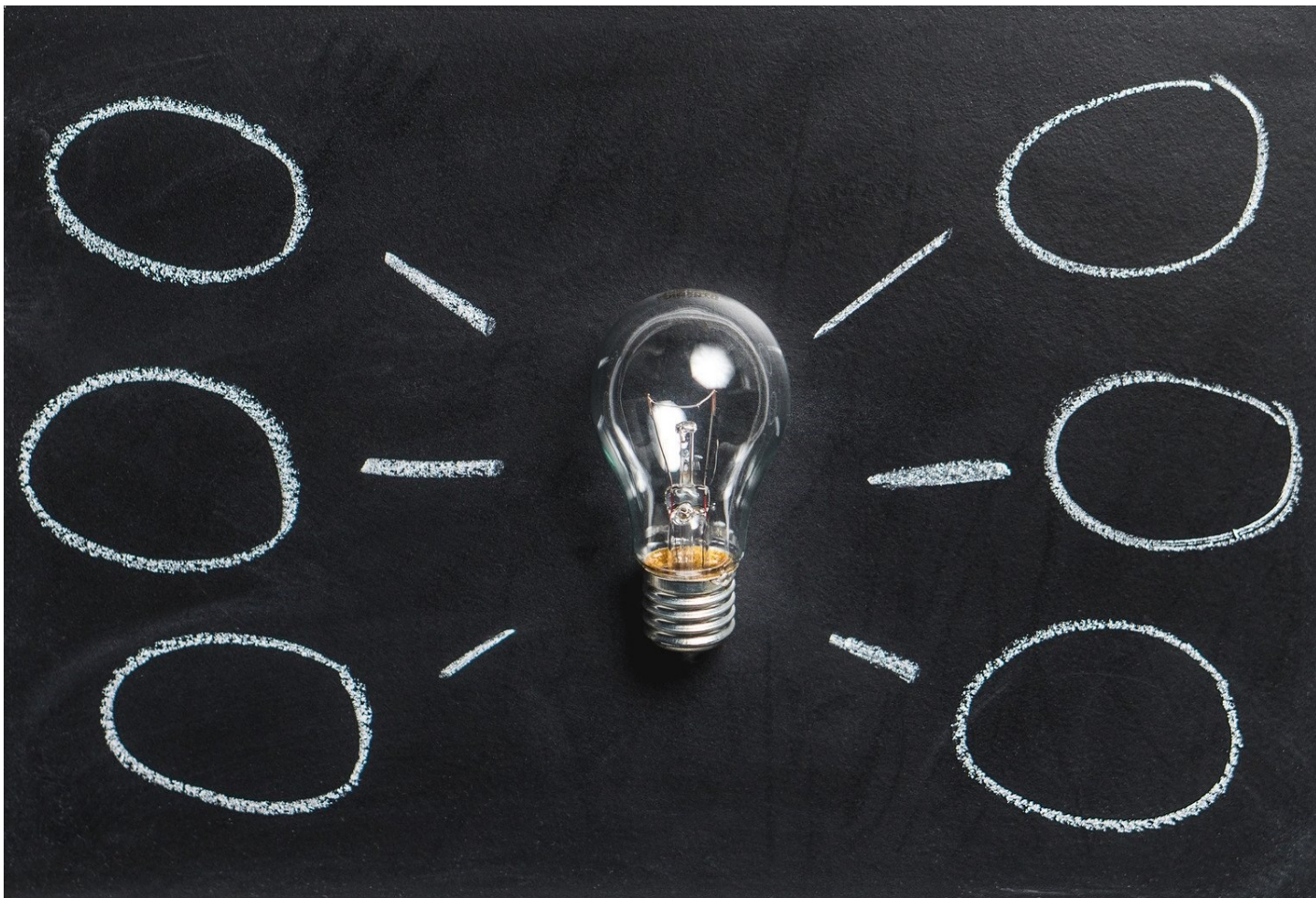
Recreation Grant History

Status Report for all Grant-Assisted Parks and Recreation Facilities

The Lapeer County Parks Department has done exemplary work in maintaining DNR grant investments in County parks. In 1989 DNR grants were awarded for a children's pool and water play equipment at the Torzewski Park. Over 30 years later the pool and water slide are still functional and in operation. Similarly, in 1999 DNR grants were awarded to General Squier Memorial Park to construct the pool area, parking lot, restrooms, and renovate the old mill. Today, each of these facilities are still in operation. Below is a listing of all awarded DNR Recreation Grants.

DNR Recreation Grant History			
Year	Park	Grant Amount	Description
1983	Torzewski County Park	\$206,570	Acquire: 67 acres Develop: gravel roads, parking, maintenance building, support building, asphalt pathway, pavilions, vault restrooms, contact station, warming shed, youth play area and tot lot equipment, picnic equipment, LWCF sign
1989	Torzewski County Park	\$135,000	Children's water play area, adjacent to existing waterslide complex
1993	Torzewski Regional Park	\$150,000	Construct a water play pool, vault restrooms, picnic pavilions, boat dock, play area, and renovate mechanical and concession buildings.
1999	General Squier Regional Park	\$516,520	Expand recreation opportunities by constructing barrier-free access for a water-based recreation area and picnic facilities in General Squier Park
2007	General Squier Memorial Park Addition	\$58,600	Acquisition of 7 acre parcel adjacent to the existing 70 acre General Squier Park and the state owned Polly Ann Trail. The parcel will provide wildlife observation opportunities and new public access to the Polly Ann Trail.

4. The Planning Process



In this Section

- Description of the planning process
- Survey Questions
- Public input results

Description of the Planning Process

Lapeer County Park & Recreation Planning Process

The planning process played a crucial role in the development of this plan. Planning methods identified how to include public input into the planning process. This process created an idea of the perceived needs and desires of Lapeer County residents. "The Comparison to Recreation Standards and the Systems Approach to Planning", was referenced to determine deficiencies in the Lapeer County Park system and ways to incorporate information gained from citizen surveys. The "Recommended Classification System for Local and Regional Recreation Open Space and Trails" was also referenced and taken into consideration to identify the recommended classification, usage, and suggested facility development standards for Lapeer County Parks.

According to these standards, Torzewski Park and General Squier Park would be classified as Large Urban Park with recommended size criteria of 75 or more acres, with a minimum of 50 acres. Although both parks have rural settings, they serve a broader purpose compared to community parks. Large Urban Parks serve a large capacity when community parks can not serve the needs of the public. This is oftentimes due to a lack in size or available amenities. The focus of a large urban park is to meet community-based recreational needs. According to the Lapeer County Recreation Areas & Population Density Map on the following page, Torzewski Park (65 acres) is within 6 miles driving distance (~11-minute travel) from the nearest urban concentration of residents in the City of Lapeer. General Squier Park (87 acres) is approximately 4.2 driving miles (~6-minute travel) from the nearest urban concentration in the Village of Almont and within 6.9 miles of Imlay City by way of the Polly Ann Trail.

Based upon these standards, it is apparent that the two major County-owned and operated parks are staples in the community and serve the largest concentrations of residents in Lapeer County, thereby satisfying National Recommendations both in size and location criteria.



Lapeer County Recreation Areas & Population Density



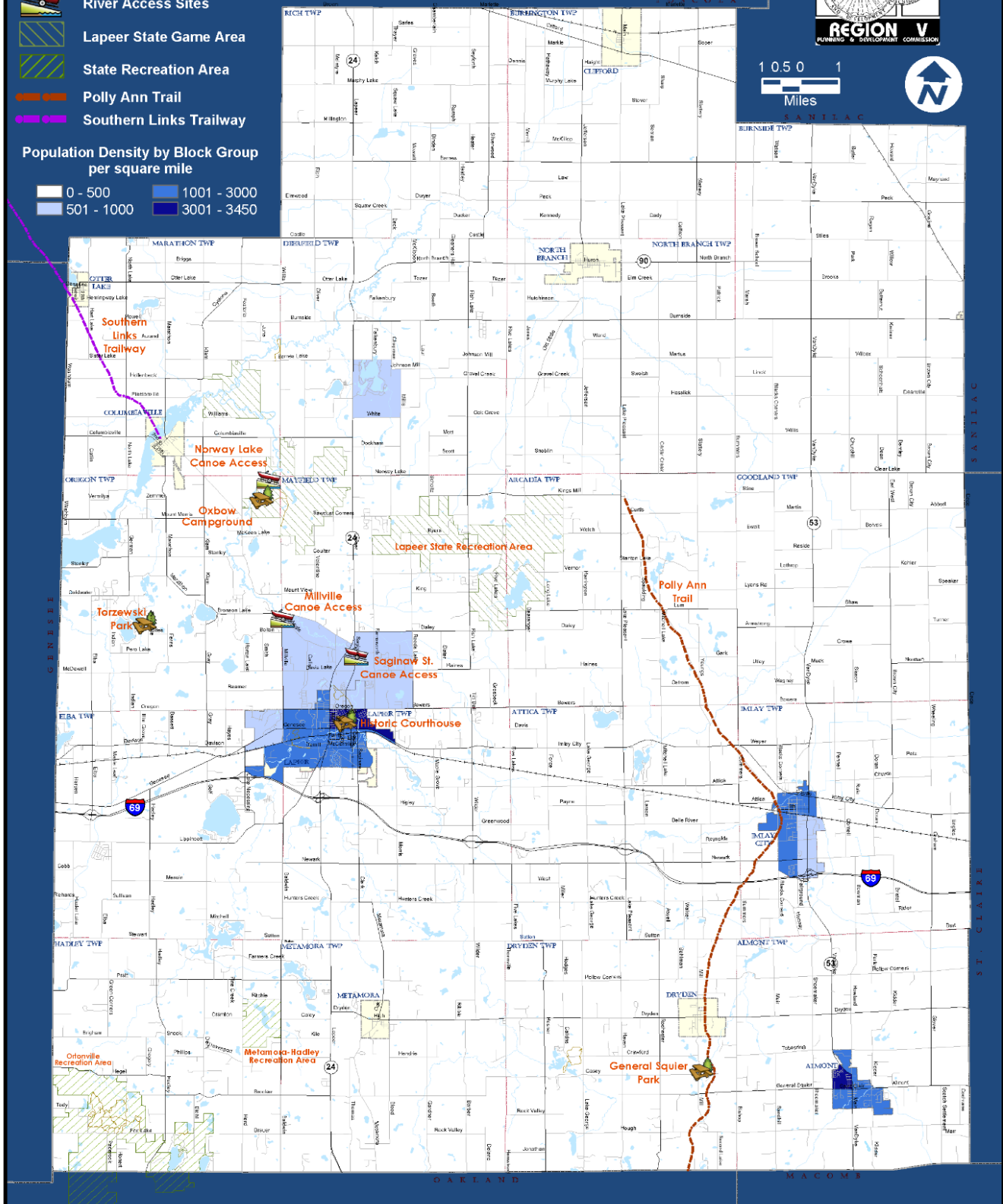
1 0.5 0 1
Miles



- Recreation Area
- River Access Sites
- Lapeer State Game Area
- State Recreation Area
- Polly Ann Trail
- Southern Links Trailway

Population Density by Block Group
per square mile

	0 - 500		1001 - 3000
	501 - 1000		3001 - 3450



Survey Questions

Public Input Process

During the development of the County's Parks and Recreation Master Plan, Lapeer County surveyed residents in order to solicit public input. The public input survey was advertised on the Lapeer County website, across social media platforms and referenced in an article in the County Press newspaper. A total of 247 survey responses were collected and analyzed to provide a summary of public input.

Additionally, a public input session was held at the Lapeer County Complex on October 6, 2021 at 5 p.m. in order to provide opportunity for the public to provide comments in regards to the development of the parks plan, as well as to assist in reviewing the accuracy of inventory information available at the time.

Public Input Survey Questions *(official copy of survey is attached)*

1. What is your Age?

- ◇ 17 or younger
- ◇ 18-29
- ◇ 30-49
- ◇ 50-65
- ◇ 65 or older

2. Where do you live?

- | | |
|-----------------------|----------------------------|
| ◇ Almont Township | ◇ Lapeer Township |
| ◇ Arcadia Township | ◇ Marathon Township |
| ◇ Attica Township | ◇ Mayfield Township |
| ◇ Brown City | ◇ Metamora Township |
| ◇ Burlington Township | ◇ North Branch Township |
| ◇ Burnside Township | ◇ Oregon Township |
| ◇ Imlay City | ◇ Rich Township |
| ◇ City of Lapeer | ◇ Village of Almont |
| ◇ Deerfield Township | ◇ Village of Clifford |
| ◇ Dryden Township | ◇ Village of Columbiaville |
| ◇ Elba Township | ◇ Village of Dryden |
| ◇ Goodland Township | ◇ Village of Metamora |
| ◇ Hadley Township | ◇ Village of North Branch |
| ◇ Imlay Township | ◇ Village of Otter Lake |

3. Do you have children 17 or younger in your household?

- ◇ Yes
- ◇ No

4. If you answered "Yes" to the previous question, how many children 17 or younger are a part of your household?

Survey Questions

Public Input Survey Questions *(official copy of survey is attached)*

5. How do you obtain information about Lapeer County Parks?

- ◇ Brochures
- ◇ Social media (i.e. Facebook, website, etc.)
- ◇ Print Media (newspaper, magazine, etc.)
- ◇ Word of mouth
- ◇ Other (please specify)

6. Have you ever visited any of the following Lapeer County Parks/Recreation Areas? (check all that apply)

- ◇ Torzewski County Park
- ◇ General Squier Memorial Park
- ◇ Polly Ann Trail
- ◇ Flint River Access Sites

7. How satisfied were you at the last visit of the mentioned Parks/ Recreation Areas?

- ◇ Very satisfied
- ◇ Satisfied
- ◇ Neither satisfied nor dissatisfied
- ◇ Dissatisfied
- ◇ Will not return

8. How do you rate the quality of operation and maintenance of the Lapeer County Parks?

	Excellent	Average	Poor	Very Poor	N/A
Condition of the buildings	<input type="radio"/>	<input type="radio"/>	<input type="radio"/>	<input type="radio"/>	<input type="radio"/>
Natural Area Stewardship	<input type="radio"/>	<input type="radio"/>	<input type="radio"/>	<input type="radio"/>	<input type="radio"/>
Mowing/tree trimming	<input type="radio"/>	<input type="radio"/>	<input type="radio"/>	<input type="radio"/>	<input type="radio"/>
Parking	<input type="radio"/>	<input type="radio"/>	<input type="radio"/>	<input type="radio"/>	<input type="radio"/>
Restroom Cleanliness	<input type="radio"/>	<input type="radio"/>	<input type="radio"/>	<input type="radio"/>	<input type="radio"/>
Signage and Information	<input type="radio"/>	<input type="radio"/>	<input type="radio"/>	<input type="radio"/>	<input type="radio"/>
Green Infrastructure (trails, trees, etc.)	<input type="radio"/>	<input type="radio"/>	<input type="radio"/>	<input type="radio"/>	<input type="radio"/>
Security	<input type="radio"/>	<input type="radio"/>	<input type="radio"/>	<input type="radio"/>	<input type="radio"/>
Water Park (slides/splash pad/pool)	<input type="radio"/>	<input type="radio"/>	<input type="radio"/>	<input type="radio"/>	<input type="radio"/>
WIFI, Cellular Service, Etc.	<input type="radio"/>	<input type="radio"/>	<input type="radio"/>	<input type="radio"/>	<input type="radio"/>

9. What are the primary reasons that you use parks in Lapeer County?

Survey Questions

Public Input Survey Questions *(official copy of survey is attached)*

10. If members of your household seldom or do not use Lapeer County Park facilities, what are the reasons? (Please check all that apply)

- ☐ Don't have park features I'm interested in
- ☐ Don't feel safe at parks
- ☐ Disability or age
- ☐ Need transportation to get to parks
- ☐ Belong to a private club
- ☐ Cost
- ☐ Other (please explain)

11. Which Initiatives should the Lapeer County Parks and Recreation Plan prioritize for future implementation? (please select your top 3 priorities)

- ☐ Acquire land for future development
- ☐ Develop and improve existing facilities
- ☐ Develop more active recreation (canoeing, fishing, etc.) opportunities
- ☐ Develop more passive recreation (hiking, picnicking, etc.) opportunities
- ☐ Develop more indoor recreation facilities (recreation center, active field complex, etc.)
- ☐ Natural and historical programming
- ☐ Non-motorized trails
- ☐ Water Trails
- ☐ Other (please specify)

12. Do any members of your household have a disability as defined by the Americans with Disabilities Act (ADA)?

- ☐ Yes
- ☐ No

13. If you answered "Yes" to the previous question, what type of accommodation is needed to serve people with disabilities in your family? (Please check all that apply)

- ☐ Non-verbal assistance (Braille)
- ☐ Adaptive equipment
- ☐ Additional Staff
- ☐ Sign language interpretation
- ☐ Other (please specify)

14. What types of programs are needed to serve people with disabilities in your family? (please check all that apply)

- ☐ Organized sports
- ☐ Horse therapy
- ☐ Social activities (dances, concerts, festivals etc.)
- ☐ Outdoor adventure programs
- ☐ Arts & crafts

Survey Questions

Public Input Survey Questions *(official copy of survey is attached)*

15. Please prioritize which populations need more recreation opportunities(1 being the highest priority, 6 being the lowest priority)
Drag and drop or click the downward arrow to submit your ranking.

- ◇ Adults (18-62 years)
- ◇ Seniors (62+ years)
- ◇ Pre-school kids (3-5 years)
- ◇ Grade School (5-12 years)
- ◇ Teens (12-18 years)
- ◇ Families

16. Did you or members of your household attend Lapeer County Parks during the Covid-19 Pandemic?

- ◇ Yes
- ◇ No

17. If you answered, "Yes" to the previous question, what activities did you participate in?

18. What safety measures would you like to see in place for you to feel comfortable participating in Lapeer County Park activities?

19. Any other feedback regarding the Lapeer County Parks?

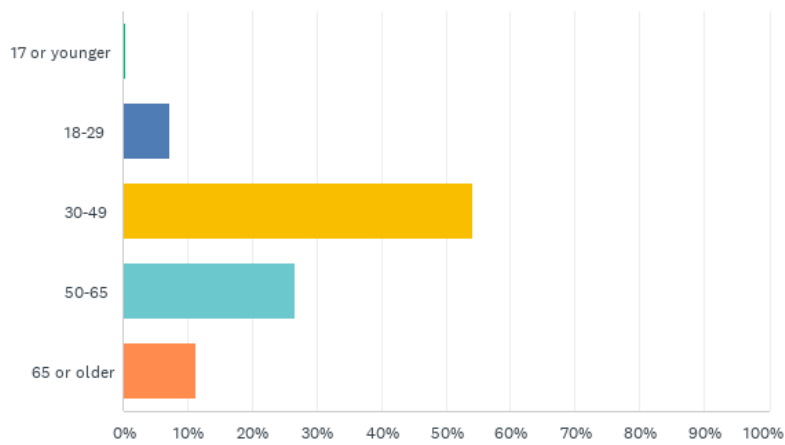
Public Input Results

Survey Results

A total of 247 survey responses were collected and analyzed to provide a summary of public input. This survey results section of the plan will highlight some of the key findings observed during survey analysis. The full list of survey question and responses is located on Appendix (0)

Over 54% of survey respondents were between the age of 30—49. The youth and young adult age group received the fewest responses with only 7% of survey respondents being 29 years old or younger.

Q1 What is your Age?



When asked, “Where do you live” the survey data shows that majority of the responses came from Dryden Township, Almont Township, Mayfield Township, Lapeer Township, City of Lapeer, and Oregon Township. Figure # on the next page shows an overview of where the survey respondents live.

Public Input Results

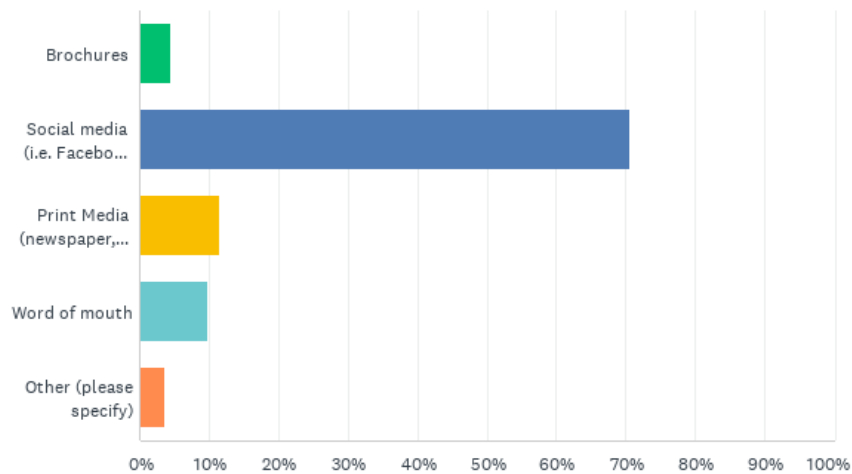
Q2 Where do you live?

ANSWER CHOICES ▼	RESPONSES ▼
▼ Almont Township	12.15% 30
▼ Arcadia Township	0.81% 2
▼ Attica Township	4.86% 12
▼ Brown City	0.40% 1
▼ Burlington Township	0.40% 1
▼ Burnside Township	0.00% 0
▼ Imlay City	4.05% 10
▼ City of Lapeer	8.10% 20
▼ Deerfield Township	2.02% 5
▼ Dryden Township	20.24% 50
▼ Elba Township	4.45% 11
▼ Goodland Township	0.00% 0
▼ Hadley Township	2.02% 5
▼ Imlay Township	1.62% 4
▼ Lapeer Township	8.91% 22
▼ Marathon Township	2.02% 5
▼ Mayfield Township	11.34% 28
▼ Metamora Township	2.02% 5
▼ North Branch Township	1.21% 3
▼ Oregon Township	6.48% 16
▼ Rich Township	0.40% 1
▼ Village of Almont	1.21% 3
▼ Village of Clifford	0.00% 0
▼ Village of Columbiaville	0.81% 2
▼ Village of Dryden	2.02% 5
▼ Village of Metamora	1.62% 4
▼ Village of North Branch	0.81% 2
▼ Village of Otter Lake	0.00% 0
TOTAL	247

Public Input Results

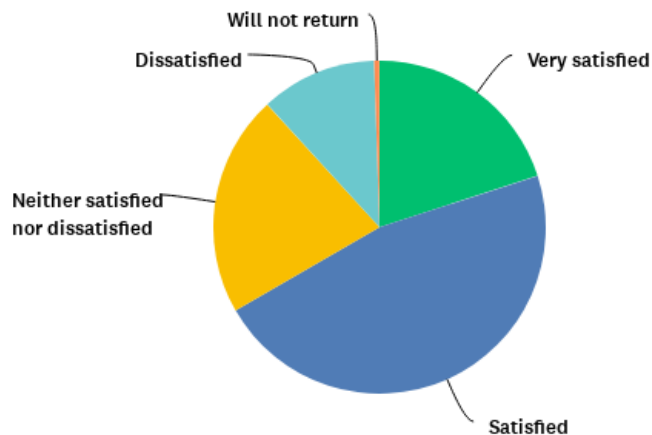
Social media is the number one resource Lapeer County residents use to get the most recent information regarding Lapeer County Parks activities.

Q5 How do you obtain information about Lapeer County Parks?



Majority of survey respondents enjoyed their last visit at Lapeer County parks with 67% of respondents satisfied or very satisfied.

Q7 How satisfied were you at the last visit of the mentioned Parks/ Recreation Areas?



Public Input Results

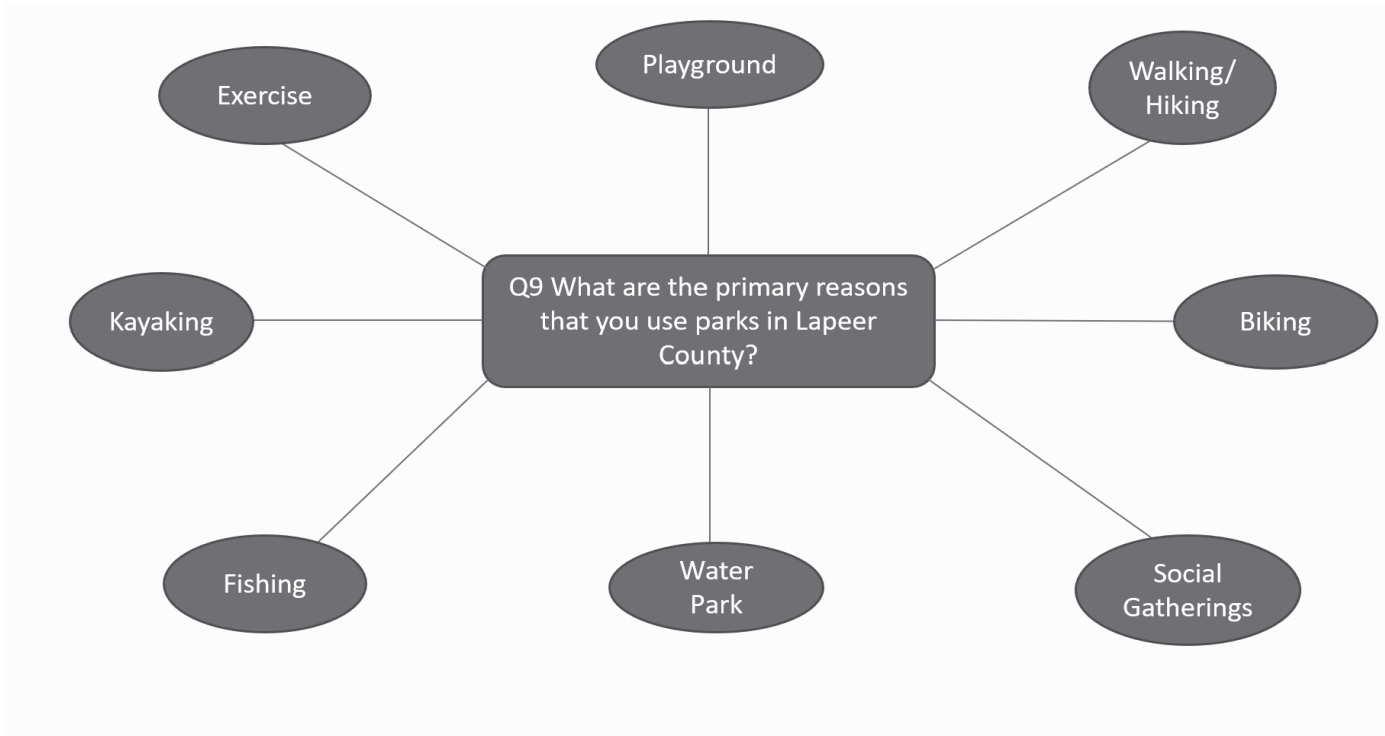
When survey respondents rated the quality of operation and maintenance of the Lapeer County Parks there were some interesting findings. The top 3 highest rated maintenance categories included mowing/tree trimming, parking and green infrastructure (trails, trees, etc.). The bottom 3 lowest rated maintenance categories included wi-fi cellular services, security and restroom cleanliness.

Q8 How do you rate the quality of operation and maintenance of the Lapeer County Parks?

	EXCELLENT	AVERAGE	POOR	VERY POOR	TOTAL	WEIGHTED AVERAGE
▼ Condition of the buildings	11.54% 21	73.08% 133	13.19% 24	2.20% 4	182	2.06
▼ Natural Area Stewardship	31.28% 56	63.13% 113	5.03% 9	0.56% 1	179	1.75
▼ Mowing/tree trimming	43.52% 84	51.81% 100	3.63% 7	1.04% 2	193	1.62
▼ Parking	36.46% 70	56.25% 108	6.25% 12	1.04% 2	192	1.72
▼ Restroom Cleanliness	14.56% 23	57.59% 91	22.78% 36	5.06% 8	158	2.18
▼ Signage and Information	15.96% 30	62.23% 117	18.62% 35	3.19% 6	188	2.09
▼ Green Infrastructure (trails, trees, etc.)	32.80% 61	55.91% 104	7.53% 14	3.76% 7	186	1.82
▼ Security	15.17% 22	58.62% 85	22.07% 32	4.14% 6	145	2.15
▼ Water Park (slides/splash pad/pool)	20.42% 29	54.93% 78	16.90% 24	7.75% 11	142	2.12
▼ WIFI, Cellular Service, Etc.	9.92% 13	36.64% 48	29.77% 39	23.66% 31	131	2.67

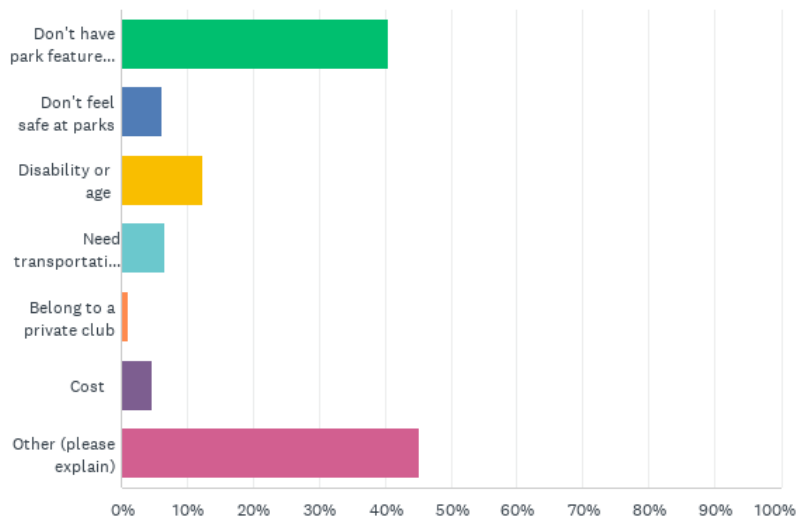
Public Input Results

Listed below in figure # are the top responses when asked, “what are the primary reasons you use parks in Lapeer County?”



The survey results show that Lapeer County residents seldomly use the parks due to a lack of park features, distance, park hours and poor internet connections.

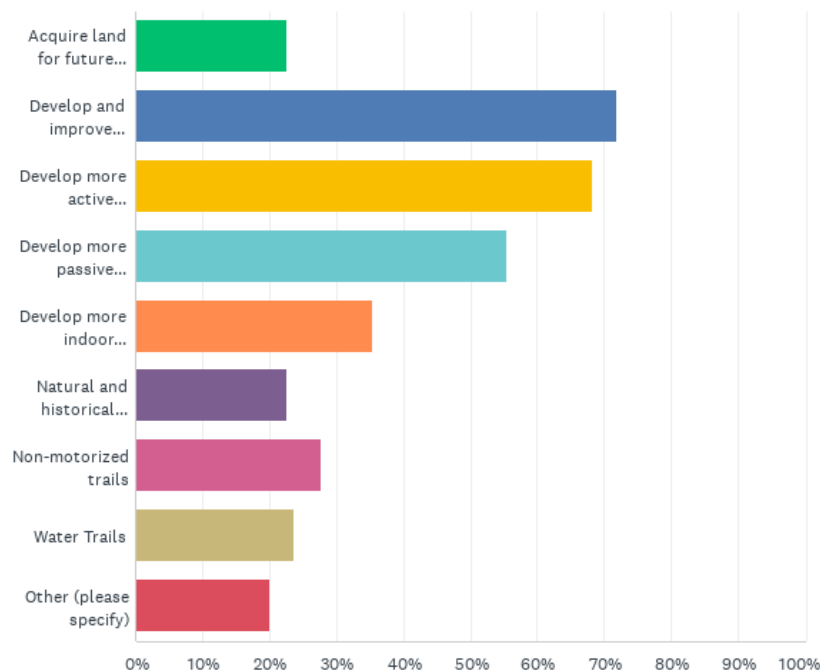
Q10 If members of your household seldom or do not use Lapeer County Park facilities, what are the reasons? (Please check all that apply)



Public Input Results

Survey respondents selected their top three ideas for future park initiatives. The survey found that 72% of respondent wanted to develop and improve existing facilities. 68% of respondents wanted to develop more active recreation (canoeing, fishing, etc.) opportunities. 55% of respondents wanted to develop more passive recreation (hiking, pic-nicking, etc.) opportunities.

Q11 Which Initiatives should the Lapeer County Parks and Recreation Plan prioritize for future implementation? (please select your top 3 priorities)



5. Goals and Objectives



In this Section

- **Park and Recreation Goal & Objectives**
- **Action Program**

Park and Recreation Goal & Objectives

1. Operate Existing Parks and Recreational Facilities in a Sustainable and Efficient Manner

- A. Replace aging equipment and structures
- B. Preserve and restore historical sites (Of specific note: The Historic Courthouse/General Squier Memorial Park)
- C. Integrate tourism and public relations campaign to market parks
- D. Clarify opportunities for stakeholders and volunteers to partner with maintenance and improvement of facilities
- E. Utilize economic development incentive programs to improve property, facilities, and programs
- F. Offer high speed internet access
- G. Implement credit card processing systems
- H. Improve security and safety measures, which include but not limited to lighting, signage, for facilities, programs, and grounds.
- I. Upgrade electrical system

Comments & Justification

The current facilities at Torzewski Park have lasted beyond their anticipated functional life expectancy and are in need of replacement. Of specific note, the water slide is over 30 years old. Additionally, Lapeer County Parks is currently funded on the proceeds from water park admittance and concessions at both County parks, therefore it is important that the County attract more residents to utilize these facilities.

When asked in the public survey which initiatives should the Parks and Recreation Plan prioritize for future implementation, the highest identified category was to “Develop and Improve Existing Facilities”

2. Increase Planning and Development for New/Expanded Parks and Recreation Opportunities

- A. Define each service offered and benefit provided
- B. Establish a business and marketing plan
- C. Utilize grants and funding sources for new facilities and activities
- D. Create more passive and active recreational activities
- E. Make recreational signage more visible to all cities and townships in Lapeer County

Comments & Justification

In Lapeer County, awareness of available park facilities has not been adequately addressed. If residents are unaware of park facilities, they will not benefit or be able to take advantage of those recreational opportunities. As awareness increases it is likely that it may potentially increase public support of efforts to seek funding.

When asked in the public survey which initiatives should the Parks and Recreation Plan prioritize for future implementation, developing more active & passive recreation opportunities were identified in the top three most identified categories.

Park and Recreation Goal & Objectives

3. Intergovernmental Cooperation and Cooperation Between Local Communities, Agencies, and Businesses

- A. Improve transportation to the parks
- B. Improve utilization of existing resources
- C. Improving promotion and use of all of the available recreation opportunities
- D. Increase senior programs opportunities
- E. Partner with local high schools to provide on the job training opportunities
- F. Improve revenue generating operations and programs
- G. Improve and/or replace roadside directional signage leading to the park

Comments & Justification

It is important for Lapeer County to develop future partnerships among government entities and those in the public and private sectors in order to enhance the quality of parks for residents

4. Preserve Natural Features, Open Space, Farmland

- A. Take advantage of special opportunities as they occur (*including long-term land acquisition within northern Lapeer County*)
- B. Maximize cooperative ventures between public, private, and non-profit entities

Comments & Justification

Lapeer County is a favored rural destination for people to live among the counties in the thumb region of Michigan. It is imperative to maintain the rural character of the County in order to continue this attraction. Also, it is important to note that although it is far less populated than the rest of the county, the northern portion of Lapeer County is underserved in terms of recreation facilities and opportunities.

Action Program

Among the proposed actions there are a few prevailing concepts Lapeer County seeks to address most immediately. Those are to increase public awareness by increasing accessibility to information relative to park facilities and offerings; increasing usage of park facilities by residents; and renovating, replacing, and/or restoring existing facilities.

The actions below have been broken down into a list of actions according to the relative park/facility to which they pertain. This list is not a fixed element and it is neither all inclusive nor exclusive. The list reflects the results of the input received from the online survey, County staff, and the public input session. Future circumstances, especially availability of funding, may change priorities.

1. Overall Parks Department Action

- Create an Inventory Resource accessible to all residents through various mediums **(1,3)**
- Improve accessibility when feasible **(1)**
- Create and implement strategy for marketing and increasing awareness of park facilities **(2)**
- Leverage funds for additional staff **(2)**
- Broadband and Wi-Fi connectivity **(1)**

2. Torzewski County Park

- Replace water park infrastructure, starting with slide **(1)**
- Improve restroom facilities **(1,2)**
- Identify an establish a campground area **(2)**
- Develop passive and active recreational activities **(2)**

3. General Squier Memorial Park

- Expand opportunities for use of park, Forest Hall, and Cottage **(1,2)**
- Historical Restoration, with improvements at Forest Hall in order to operate and make available to residents during the winter months **(1)**
- Improve connection between trail head at the park to the Polly Ann Trail **(1)**
- Improve existing restroom facilities **(1)**
- Increase safety and lighting in the sledding area **(1)**

4. Polly Ann Trail

- Continue Cooperative Maintenance with Department of Natural Resources **(1,3)**
- Continue and expand leverage of volunteer assistance **(3)**
- Improve trail connections with local units **(2,3)**

5. Historic Courthouse

- Leverage funds for maintenance **(1,2)**
- Develop and implement marketing campaign to increase use **(1,2,3)**

6. Flint River Access Sites

- Promote use of Canoe/Kayak Launches and Access Sites **(2)**
- Continue river sweeping cooperation with the Flint River Watershed Coalition **(3)**
- Explore feasibility of ADA standards for existing and future access sites **(1)**
- Continue to develop Saginaw Street Access Site **(1)**

6. Participating Communities



In this Section

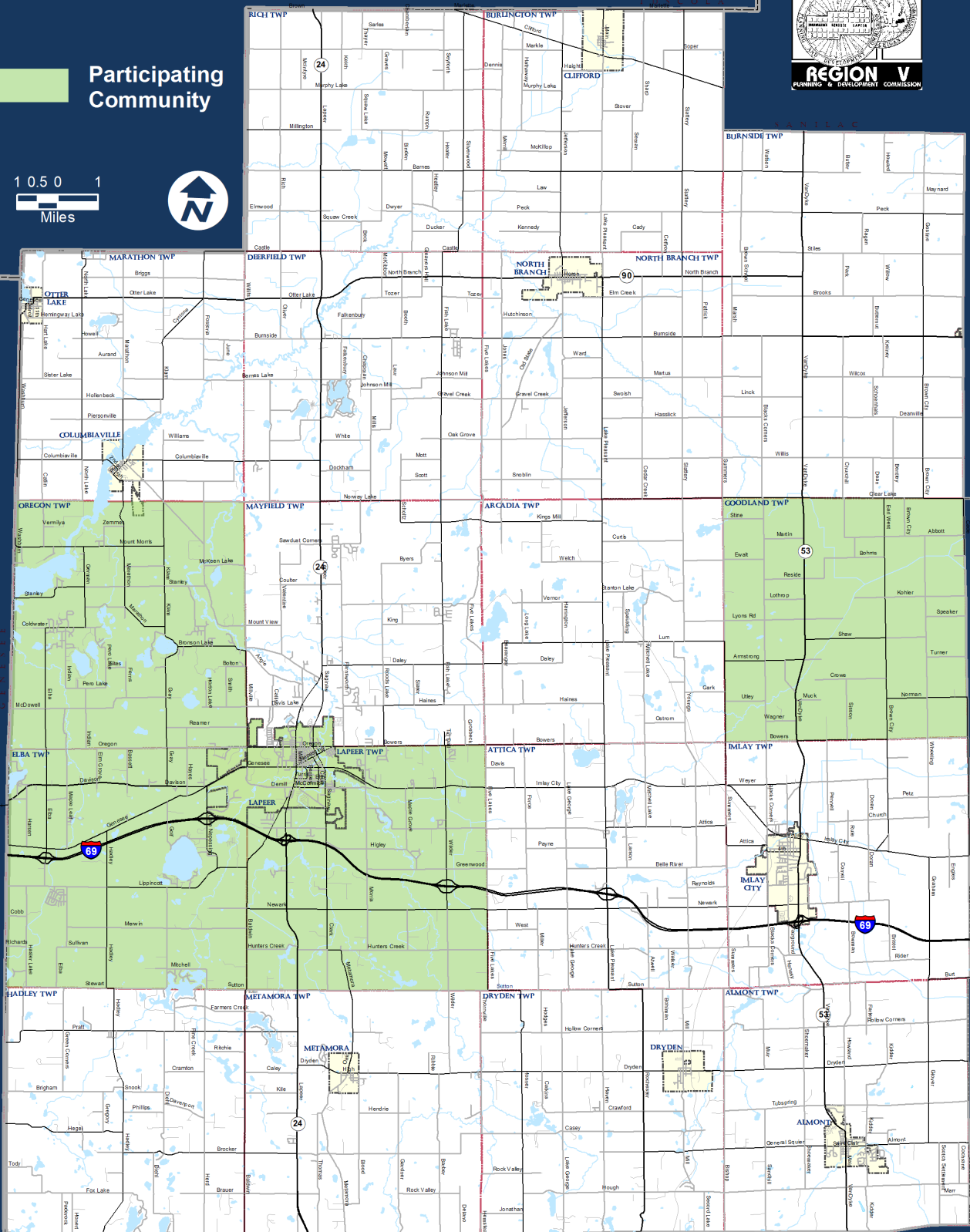
- Oregon Township
- City of Lapeer
- Lapeer Township
- Goodland Township
- Elba Township

Participating Communities



Participating Community

1 0.5 0 1
Miles

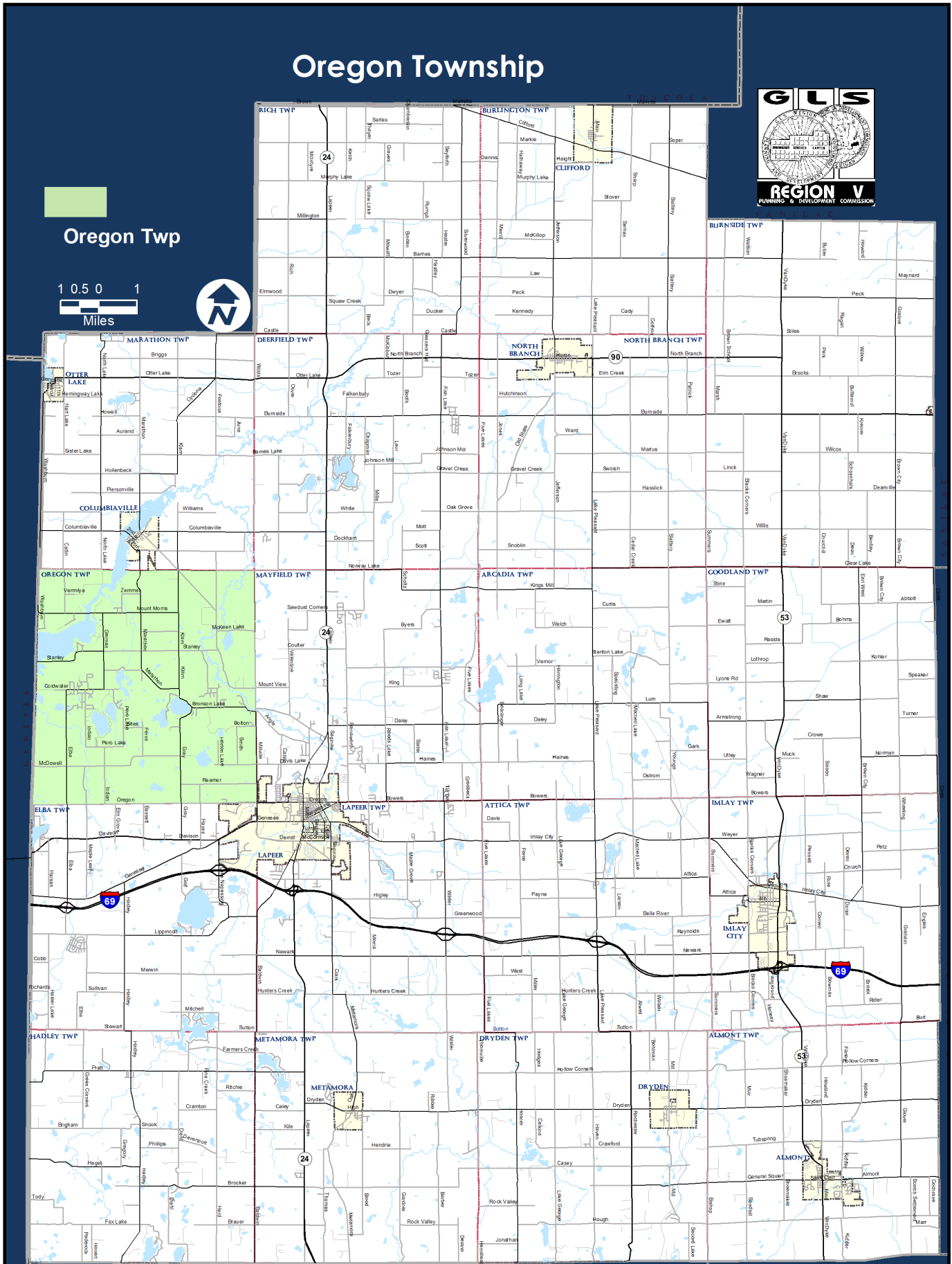


Oregon Township



Oregon Twp

1 0.5 0 1
Miles



Oregon Township

Community Description

Oregon Township is located on the west side of Lapeer County, largely a bedroom community. According to the 2019 census population estimates, Oregon Township has a population of 5,722.

Administrative Structure

Oregon Township operates as a “general law” township under Michigan statutes. It is governed by a five-member elected board consisting of Supervisor, Clerk, Treasurer and two Trustees. Each official is elected to serve a four year term of office.

In addition to the individual duties of the administrative officials, the five officers serve as the legislative body for Oregon Township. While the most important legislative duties relate to the zoning ordinance, the Township also has the responsibility for maintaining general ordinances.

When the township is ready to start a parks program, the Township would establish a parks and recreation advisory board and seek volunteers to help maintain the park. The township board would have the authority to commit funds for parks and recreation, apply for grants, and purchase land.

Programming, Volunteers, and Cooperative Relationships

In the event a parks and recreation advisory board were to be appointed, volunteers would make up that board. As parks projects are proposed, the township board will reach out to local schools, churches, businesses, and service clubs for involvement and assistance in raising funds for the project.

Budgets

Currently there is no funding in place for parks; however, future sources of funding for a potential park would come from the general fund and donations.

Recreation Inventory

Oregon Township does not currently own or operate any recreational areas. Most of the Township is served by either Lapeer County or Genesee County Parks. The Township is interested in creating a recreation area at the Township Hall property.

Oregon Township

Goals and Objectives

Goal: Provide quality recreational opportunities to improve the health and fitness of Township residents

Objective: Continue the agreement with the City of Lapeer to provide of discounted memberships to the Community Center.

Goal: Develop trails and multi-use recreational paths

Objective: Identify possible non-motorized routes, methods and funding to connect to the Southern Links Trail from Columbiaville to the City of Lapeer.

Goal: Provide for recreational opportunities at the township hall property

Objective: Identify possible area for picnic and playground at the township hall.

Objective: Identify possible sources of project funding.

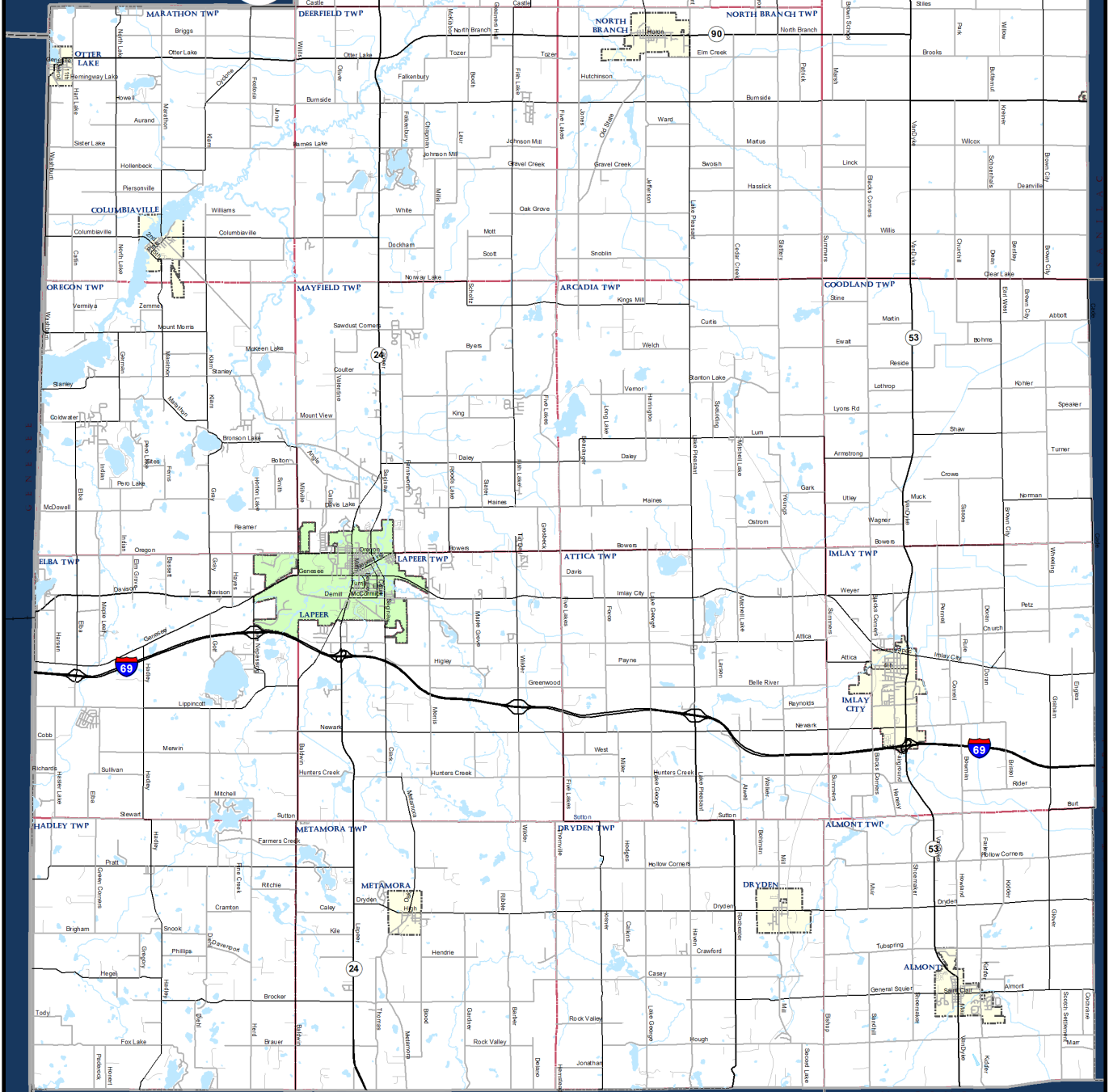
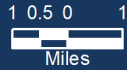
Action Plan

1. Conduct a survey of residents asking for input on the desired developments of parks within the Township
This would ensure input from the residents on how money is spent for parks.
2. Continue to work with Lapeer County Parks
This would ensure that Oregon Township has some input into what is going on within Torzewski Park, which is located within Oregon Township.

City of Lapeer



City of Lapeer



City of Lapeer

Community Description

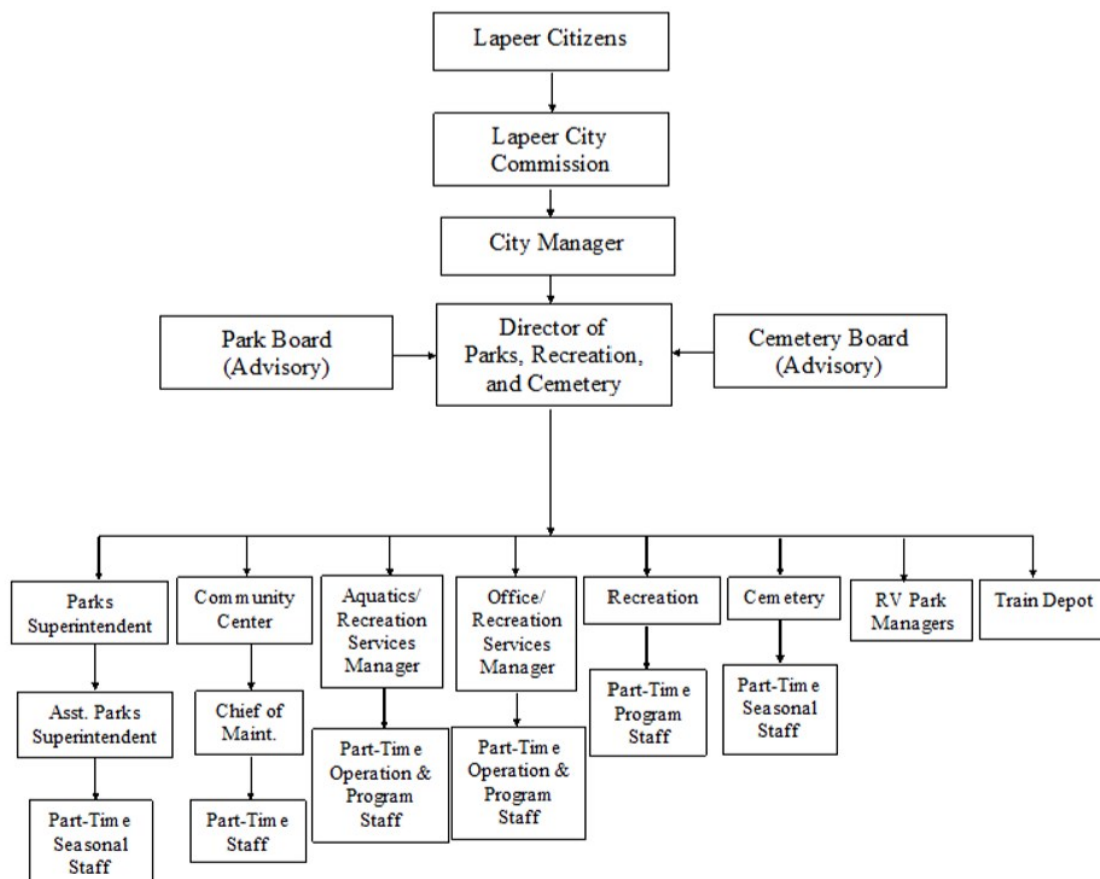
The City of Lapeer, the County seat for Lapeer County, is located 20 miles west of Flint and 50 miles east of Port Huron, just off of Interstate 69. Lapeer County is located in southeast Michigan and is bordered by Tuscola and Sanilac Counties to the north, St. Clair County to the east, Oakland and Macomb Counties to the south, and Genesee County to the west. Geographically, the City is also located in the center of the Lapeer Community School District.

The City is over 7 square miles in size (7.38 sq. mi.) and is open to expanding or entering into joint agreements with neighboring Townships including Oregon, Mayfield, Elba, and Lapeer Townships.

Administrative Structure

The City of Lapeer Charter, incorporated in 1869, most recently amended in 2013, establishes governance for all City business. The Charter extends authority to an elected City Commission to establish policy, enter into agreements, accept grants, commit funds, and purchase property. The Parks and Recreation Department plans and programs parks and recreation for the City. The Director oversees full time, part time, and seasonal employees as well as program instructors and volunteers. This department, similar to all other City departments, reports to the City Manager, who relays information and reports to the City Commission.

The Director also coordinates with the Park Board, established under PA 156 of 1917, and the Cemetery Board. The Boards serve in an advisory capacity on the recreation and cemetery needs of the City and assist in the planning and implementation of park services and capital improvements for Lapeer residents



City of Lapeer

Programming, Volunteers, and Cooperative Relationships

In addition to the Parks and Recreation Department, Park Board, and Cemetery Board, a number of other City departments and groups cooperate to aid in the delivery of activities and management of the parks and programming. Groups that coordinate to provide recreation in Lapeer include:

Lapeer School District

The Lapeer School District also has facilities that are used for recreation and the City and the school share many of their facilities for use by students and the general public including gymnasiums, classrooms, athletic fields, and the pool.

Planning Commission

The Planning Commission is involved in new development within the City and assists in recreation planning and development. The Commission is the avenue for the City to rezone property for recreation purposes, and the Planning Commission reviews site plans for new recreation facilities or significant improvements to existing facilities. It is also the Planning Commission that can require recreation facilities as part of new development.

Department of Public Works (DPW)

The DPW assists the Parks and Recreation Department in maintaining building and grounds, public parks, and sidewalks, including street sweeping, roadside/park/cemetery mowing, snow removal, and ice control.

Chamber of Commerce and Downtown Development Agency (DDA)

The Lapeer Chamber of Commerce and DDA are very active in scheduling special events and festivals for community residents. They host the annual holiday parade and the Lapeer Days festival.

Local Service Groups

A variety of informal athletic and social programs are offered in Lapeer through local groups including American Legion, Kiwanis, Eagles, Elks, Optimist Club, Lions Club, Knights of Columbus, Rotary and Veterans of Foreign War (VFW), which offer special events and social programs for members and their families. Senior meals, card groups, and bingo are offered at various halls throughout the year. In addition, a number of special events are organized annually by these groups.

Volunteers

Extensive use of volunteers and partnerships assist with programs and services. Individuals and groups participate on boards/committees, deliver programs, volunteer coach, and develop and maintain parks/natural resources.

Budgets

Expenditures are limited to operational items such as salaries and benefits, office materials and supplies, utilities, facility, and equipment maintenance. Revenues come from program fees and charges, facility rental fees, grants, donations, tax subsidies, and the general fund assist in compensating costs. The operating budget for the Parks and Recreation Department is adopted annually by the City Commission for the fiscal year, which runs from July 1st to June 30th. Capital improvements are introduced each year into the Operation Budget from the City's five-year Capital Improvement Program.

Fiscal Year 21/22 Parks and Recreation Budget			
Park Revenues		Park Expenses	
Charges For Services	\$500	Wages (FT / PT)	\$169,663
Pavilion Rentals	\$5,000	Fringe Benefits/Utilities	\$127,899
Other Revenues	\$1,500	Operations	\$197,091
CMAQ GRANT	\$353,000	CIP Projects	\$567,503
Total Revenues	\$360,000	Total Expenses	\$1,062,156
Recreation Revenues		Recreation Expenses	
Sport Programs	\$68,500	Wages (FT / PT)	\$114,083
Summer Day Camp	\$40,000	Fringe Benefits/Utilities	\$56,235
Class/Instruct - Other	\$14,000	Operations	\$71,556
		CIP Projects	-
Total Revenues	\$130,500	Total Expenses	\$241,874
Excess (Deficiency) of Revenues Over Expenditures	Parks \$ (702,156)	Recreation \$ (111,374)	
Capital Improvement Projects		Funding Sources	
M-24 Connections Prelim Design & Grant Application	\$10,878	TIFA 2 & TIFA 3 (50/50 split)	
M-24 Connection Design & Engineering	\$60,000	TIFA 2 & TIFA 3 (50/50 split)	
Chatfield/Mott Trailhead Improvements	\$35,000	TIFA 3	
Genesee St. Trail Extension	\$345,625	TIFA 3 & CMAQ	
Outdoor Ice Rink	\$116,000	Park Fund	

City of Lapeer Public Parks and Facilities Inventory																										
	Acres	Barrier Free Accessibility	Ball Fields	Soccer Fields	Basketball Courts	Tennis Courts	Volleyball Courts	Playground	Fitness	Picnic Shelter	Picnic Tables	Paths and Trails	Parking	Permanent Restrooms	Portable Toilets	Open Space	Shuffleboard	Horseshoes	Sledding Hill	Swimming Pool (Indoor)	Gym (Indoor)	Track	Bridge	Drinking Fountain	Benches	Bleachers
American Legion Field	9.0	1	1	1	-	-	-	-	-	1	3	-	Y	-	-	Y	-	-	-	-	-	-	-	-	-	-
Anbrook Park	4.6	2	2	2	-	-	-	-	-	1	17	Y	Y	-	Y	Y	-	-	-	-	-	-	1	1	1	-
Audubon Park	3.2	3	1	1	2	1	-	-	1	-	10	Y	-	-	Y	Y	-	-	-	-	-	-	-	1	2	4
Community Center	6.9	3	-	-	2	-	2	-	Y	-	8	-	Y	5	-	Y	-	-	-	Y	Y	Y	-	4	2	2
Cranton Park	15.0	2	-	-	-	-	3	-	3	-	50	-	Y	1	Y	Y	-	16	Y	-	-	-	1	2	3	-
East Anbrook Park	8.3	2	-	-	-	-	-	-	-	-	-	-	-	-	-	Y	-	-	-	-	-	-	-	-	-	-
Farmer's Creek at Oakdale	6.5	3	-	-	-	-	-	-	-	-	-	Y	Y	-	-	Y	-	-	-	-	-	-	-	-	-	-
Lapeer Depot	0.9	4	-	-	-	-	-	-	-	-	-	-	Y	1	-	Y	-	-	-	-	-	-	-	-	2	-
Lapeer Optimist Community	22.0	3	-	10	-	-	-	-	1	-	12	Y	Y	1	-	Y	-	-	-	-	-	-	-	1	12	10
Soccer Fields																										
Linear Park Pathway	18.0	3	-	-	-	-	-	-	-	1	-	Y	Y	-	-	Y	-	-	-	-	-	-	3	-	4	-
Mount Hope Cemetery	24.6	2	-	-	-	-	-	-	-	-	-	-	Y	-	-	Y	-	-	-	-	-	-	-	-	-	-
Oakdale Cemetery	3.0	1	-	-	-	-	-	-	-	-	-	-	-	-	-	Y	-	Y	-	-	-	-	-	Y	-	-
Perkins Park	0.8	3	-	-	-	-	-	-	1	-	6	-	-	-	Y	Y	-	-	-	-	-	-	-	-	-	-
Prairies and Ponds at Oakdale	37.5	2	-	-	-	-	-	-	-	1	1	Y	Y	-	Y	Y	-	-	-	-	-	-	3	-	8	-
Riverflats	5.8	1	-	-	-	-	-	-	-	-	-	-	-	-	-	Y	-	-	-	-	-	-	-	-	-	-
Rotary Park	7.0	2	-	-	-	-	-	-	1	-	14	Y	Y	-	Y	Y	2	2	-	-	-	-	2	1	-	-
Rowden Park and Water Tower	65.0	4	1	-	-	3	-	1	-	1	21	Y	Y	1	-	Y	-	-	Y	-	-	-	1	3	2	2
Veterans Memorial Park	0.3	2	-	-	-	-	-	-	-	-	-	-	-	-	-	Y	-	-	-	-	-	-	-	1	-	-
Woods at Oakdale	37.0	2	-	-	-	-	-	-	Y	-	-	Y	-	-	-	Y	-	-	-	-	-	-	2	-	2	-
Ed LaClair Pocket Park	.11	5	-	-	-	-	-	-	-	-	3	-	-	-	-	-	-	-	-	-	-	-	-	-	4	-

Recreational Inventory

City of Lapeer Recreation Inventory		
Recreation Area	Acreage	Accessibility Score
American Legion Field	9	1
Annrook Park	4.6	2
Audubon Park	3.2	3
City of Lapeer Community Center	6.9	3
Cramton Park	15	2
East Annrook Park	8.3	2
Farmer's Creek at Oakdale	6.5	4
Lapeer Depot	1	4
Lapeer Optimist Community Soccer Fields	22	3
Mount Hope Cemetery	24.6	2
Oakdale Cemetery	3	1
Perkins Park	1	3
Prairies and Ponds at Oakdale	37.5	2
Riverflats	6	1
Rotary Park	7	2
Rowden Park	65	4
Veterans Memorial Park	1/4 acre	1
Water Tower Travel Trailer Park	3.5	2
Woods at Oakdale	37	2
Ed LaClair Pocket Park	40/120 ft	5

American Legion Field

- Location. South of Genesee Street, west of M-24.
- Size. 9 acres.
- Natural Features. Wooded area at southwest portion of the site.
- Facilities. Softball/youth baseball diamond and picnic area. Portable toilets are used seasonally. The ball diamond has traditionally been used for baseball/softball during the spring and summer months. The picnic area is managed and used by the American Legion.
- Use. American Legion Field is available to the City under a unique land arrangement. The west section of this property is currently held by the American Legion and a provision in the deed reverts the property to the City should the American Legion organization cease to exist. The east section is owned by the City. A formal agreement between the City and American Legion is in place to cover use, parking, and maintenance.
- Accessibility. (Accessibility Ranking – 1) Site does not have adequate facilities to accommodate residents. No barrier-free parking; site is a community park but does not have accessible connecting routes around the park.



Annrook Park

- Location. Off Saginaw and Court Streets immediately south of Downtown Lapeer. Annrook is the southernmost destination park along the Linear Park pathway system; however, it is not accessed by the paved pathway, but a sidewalk connection exists along Saginaw and Nepessing Streets.
- Size. 4.6 acres.
- Natural Features. Farmer's Creek borders the park to the north. The park is generally open space surrounded by neighborhood streets and downtown. Most of the park is located in the 100-year floodplain, however, its elevation is sufficient to rarely allow flooding.
- Facilities. Two youth baseball/softball fields, a pavilion, playground area with safety surfacing, pedestrian bridge, and asphalt pathway along Farmer's Creek. Portable toilets are used seasonally.
- Use. Use of the park is heavy during spring and summer for baseball/softball. Special events held in Downtown Lapeer often include use of the park as well. Neighborhood residents and downtown workers are primary users of the park.
- Accessibility. (Accessibility Ranking – 2) There is ADA parking available on-site, but routes from the parking lot can be improved to make for easier transition from parking lot to park amenities (i.e. playground equipment, pavilion, and trail).



City of Lapeer

Audubon Park

- **Location.** In the eastern portion of the City, just south of Nepessing Street, in the center of a residential neighborhood.
- **Size.** 3.2 acres.
- **Natural Features.** Open Space.
- **Facilities.** A youth baseball/softball diamond, open space grass area, playground area with safety surfacing, picnic pavilion, perimeter asphalt path, and an outdoor basketball court. There is no formal parking lot, and street side parking is very busy during scheduled youth activities. Portable toilets are used seasonally.
- **Use.** Use of the park is mixed between programmed youth sports such as baseball/softball and soccer, and neighborhood use of the open space and existing facilities.
- **Accessibility.** (Accessibility Ranking – 3) Off-street parking is not available, but park is listed as a neighborhood park. Accessible connecting paths are available on-site to amenities and to site features. Pavilion and tables are accessible, but softball/baseball field are not accessible from the walking trail.



City of Lapeer Community Center

- **Location.** Adjacent to Saginaw Street.
- **Size.** 6.9 acres.
- **Natural Features.** Open Space.
- **Facilities.** Indoor competition/leisure swimming pool, gymnasium, weight/fitness equipment, dance floors, meeting rooms, track, racquetball courts, child care area, wellness center, spinning room, locker facilities, and administrative offices. Outdoor facilities include a spray park in the courtyard outside the pool, two sand volleyball courts, two basketball courts, and a 175 car parking lot.
- **Use.** The City of Lapeer Community Center is a 55,000-square-foot facility constructed to enhance the recreational quality of life of the community. Opened in 1995, this facility fulfilled a long-time wish of the City and has provided a variety of health, wellness, and recreation facilities and programs. The Administrative Offices of the Park and Recreation Department operate out of the Community Center. Use is available to the entire community and visitors, as City of Lapeer residency is not required. Annual passes, daily visits, classes and programs, and rentals provide opportunities for facility use. Facilities and programs are available for all ages. The center is open seven days a week.
- **Accessibility.** (Accessibility Ranking – 3) Community Center has most of the accessibility guidelines in place. The City is also currently working on upgrades to the parking lot area and increasing the number of ADA-parking spaces. Both indoor and outdoor amenities are universally accessible; some may need to be updated (i.e. indoor restroom facilities).



City of Lapeer

Cramton Park

- Location. Intersection of Genesee Street and M-24.
- Size. 15 acres.
- Natural Features. Farmer's Creek winds its way through this scenic low land area. Both mature trees and open space are present. Much of this park is located in the 100 year floodplain, however, the park elevations rarely allow flooding.
- Facilities. Three lighted tennis courts, two tennis rebound walls, three pavilions, sixteen lighted horseshoe pits, four play-ground areas with safety surfacing, four parking lots, two pedestrian bridges, and seasonal restrooms. Additionally, an asphalt pathway runs from the main parking lot to the restrooms, west pavilion, east pavilion, tennis courts, and playground area to provide accessibility. Facilities are generally in good condition.
- Use. Cramton Park has traditionally been the most popular day-use park located in the City of Lapeer. Use of the park is both active and passive because of the availability of open space and developed facilities. A horseshoe club hosts evening leagues and occasional tournaments. Cramton Park is visited by neighborhood and area-wide residents. It is also a popular stop for visitors to the Lapeer area. Many of the community special events are hosted there.
- Accessibility. (Accessibility Ranking – 2) Some park amenities are ADA-accessible, but there are still deficiencies with connectivity and access to some site features. As addressed in the facility analysis above, there is safety surface that has been installed previously.

East Annrook Park

- Location. Nepessing Street immediately south of Rotary Park, adjacent to downtown.
- Size. 8.3 acres.
- Natural Features. Branch of the Flint River flows south and west of the park. Farmer's Creek also joins the Flint River at this location. City-owned abandoned railroad property borders the east side. The park is located in the 100-year floodplain and is often flooded during wet seasons because of its low elevation. Flat, open space best describes the area.
- Facilities. There are no existing facilities in the park; however, there is an extension of the Linear Path 1/2 mile from Nepessing to Saginaw Street. The path includes a bridge crossing the Flint River and a connecting trail to the Audubon Park Neighborhood and the existing Linear Path.
- Use. This park has limited use due to its low elevation and being wet a majority of the year; however in the warmer, dryer months, some special events take place.
- Accessibility. (Accessibility Ranking – 2) Currently the only amenity that exists at the park is the Linear Path, which is a universal designed route.

City of Lapeer

Farmer's Creek at Oakdale

- Location. South of Prairies and Ponds at Oakdale, south of the railroad.
- Size. 6.5 acres.
- Natural Features. Farmer's Creek runs through the area which is generally located in the floodplain, open space, and mature trees which provide scenic beauty.
- Facilities. Farmer's Creek provides paved and limestone trails, observation areas, canoe access, and a teaching station. A newly-developed natural surface single track trails run throughout the property. Parking is provided at the Chatfield School parking lot.
- Use. Use of Farmer's Creek is by both local schools and area visitors. Its proximity adjacent to Chatfield Charter School allows shared use of facilities and program opportunities. The park offers educational and passive recreation opportunities. Due to the newly developed Oakdale Trails, this property attracts many local visitors to hike, bike, and run through scenic countryside within City-owned property.
- Accessibility. (Accessibility Ranking – 4) Site provides accessible parking and has access to most of the amenities within the site. Canoe access needs to be revised to provide for universal design. Trail access along Genesee has been improved and widened recently to provide additional routes to the site.



Farmer's Creek at Oakdale

- Location. South of Prairies and Ponds at Oakdale, south of the railroad.
- Size. 6.5 acres.
- Natural Features. Farmer's Creek runs through the area which is generally located in the floodplain, open space, and mature trees which provide scenic beauty.
- Facilities. Farmer's Creek provides paved and limestone trails, observation areas, canoe access, and a teaching station. A newly-developed natural surface single track trails run throughout the property. Parking is provided at the Chatfield School parking lot.
- Use. Use of Farmer's Creek is by both local schools and area visitors. Its proximity adjacent to Chatfield Charter School allows shared use of facilities and program opportunities. The park offers educational and passive recreation opportunities. Due to the newly developed Oakdale Trails, this property attracts many local visitors to hike, bike, and run through scenic countryside within City-owned property.
- Accessibility. (Accessibility Ranking – 4) Site provides accessible parking and has access to most of the amenities within the site. Canoe access needs to be revised to provide for universal design. Trail access along Genesee has been improved and widened recently to provide additional routes to the site.



City of Lapeer

Lapeer Depot

- Location. West of Saginaw and South of Genesee, off of Howard Street.
- Size. Nearly 1 acre.
- Natural Features. Open Space.
- Facilities. The historic train depot originally opened in 1900.
- Use. Lapeer Depot is an active Amtrak station that provides service from Port Huron to Chicago. The Depot was refurbished using an MDOT Transportation Enhancement Grant. The depot is used for some programming and meetings.
- Accessibility. (Accessibility Ranking – 4) Active train depot has been renovated per the current standards for ADA compliance with ample ADA-accessible parking and paths to the depot.



Lapeer Optimist Community Soccer Fields

- Location. Saginaw Street, just south of Lapeer East High School.
- Size. 22 acres.
- Natural Features. Open Space.
- Facilities. Ten soccer fields, including one that is lighted, restroom/concession, playground, pavilion, accessible pathways/seating, irrigation, and a maintenance building. City water and sewer is provided by the schools to the restroom/concession building. A City well provides irrigation.
- Use. A unique City-school Use Agreement allows shared facility use. The Lapeer Community Schools provide parking and access to utilities, while the City provides the fields and support facilities. The Use Agreement details primary and secondary use of fields, maintenance, and utility arrangements. Use of the fields is shared by Park and Recreation teams, physical education classes, interscholastic school teams, and club soccer teams.
- Accessibility. (Accessibility Ranking – 3) While most of the fields around the park have accessible paths, there is a lack of parking on site that would promote universal access. The pavilion, restroom areas, and playground equipment



Mount Hope Cemetery

- Location. North of Genesee Street and west of M-24, accessed off of Adams Street.
- Size. 24.6 acres.
- Natural Features. Ample open space and some mature trees.
- Facilities. Grave sites, benches, and maintenance garage.
- Use. Established in 1847, Mt. Hope Cemetery is an active cemetery with space for additional grave sites.
- Accessibility. (Accessibility Ranking – 2) Cemetery is a part of the park property of Lapeer. However, site does not have accessible routes and only has roads around grave sites.



City of Lapeer

Oakdale Cemetery

- Location - South of DeMille Street, west of Baldwin Street.
- Size - 3 acres.
- Natural Features - Ample open space and some mature trees.
- Facilities - Grave sites and benches.
- Use - Oakdale Cemetery is not an active cemetery and is available for visitation of existing grave sites only.
- Accessibility. (Accessibility Ranking – 1) Site is not in good condition and does not have any components of universal design available. Access to site is off of DeMille Road. The site is rustic with natural features.

Perkins Park

- Location. Northwest quadrant of the City off Oregon Street.
- Size. Almost 1 acre.
- Natural Features. Primarily open space with some mature trees.
- Facilities. Playground equipment with safety surfacing; a pavilion is also on the site.
- Use. Use of the park is generally by local neighborhood residents. Portable toilets and street side parking are used.
- Accessibility. (Accessibility Ranking – 3) Park has pathways that connect the existing sidewalk to the playground equipment. The pavilion east of Lincoln Street does not have good access to ensure universal design. Site does not have on-street parking; design for the park is more for a neighborhood park.

Prairies and Ponds at Oakdale

- Location. Off Genesee Street, 1 mile west of M-24.
- Size. 37.5 acres.
- Natural Features. Wetland areas, the introduction of a native Michigan prairie, and small woodland areas. It serves as a flyway for migrating waterfowl and habitat for small animals.
- Facilities. Limestone trails, floating dock, bridges, boardwalks, pavilion, observation areas, and interpretive signage. Parking is provided at the Chatfield School parking lot. An asphalt trail will also be added to the southern trail for better accessibility to the prairie, pond, and woodland habitat. There is an asphalt trail starting at DeMille that allows for better accessibility to the prairie, pond, and woodland habitat.
- Use. The site has been set aside as a “natural habitat” including management of its wetlands, woodlands, and upland areas. Its proximity adjacent to Chatfield Charter School allows shared use of facilities and program opportunities. Use of Prairies and Ponds is by local schools and area visitors. The park offers educational and passive recreation opportunities. The park also serves as an access point to get to the newly-developed Oakdale Trails.
- Accessibility. (Accessibility Ranking – 2) Park used mostly as a wetland habitat. Connecting paths around the site are accessible; ADA-accessible parking options are available near the Chatfield School. Very limited amenities are on-site besides the walking trail and pavilion.



City of Lapeer

Riverflats

- **Location.** Runs primarily along Farmer's Creek, just south of Downtown Lapeer.
- **Size.** Approximately 6 acres.
- **Natural Features.** Farmer's Creek runs through the area which is generally located in the floodplain. Open space and mature trees provide scenic beauty.
- **Facilities.** There are no existing facilities.
- **Use.** Use is minimal. Accessibility is difficult because of steep elevation changes at most road crossings; however, this area provides opportunities for a connection to downtown.
- **Accessibility - (Accessibility Ranking – 1)** Currently there are no amenities on the site. Future developments have been discussed, but any future developments should include accessible access to the creek.



Rotary Park

- **Location.** East border of downtown off Nepessing Street.
- **Size.** 7 acres.
- **Natural Features.** A branch of the Flint River circles the park to the west and north. All but the eastern-most end of the park is located in the 100-year floodplain, and lower elevations of the park often hold water during wet seasons.
- **Facilities.** A pavilion, a canoe/kayak launch, a dog park, a play-ground area with safety surfacing, an asphalt pathway along the river and on the abandoned railroad property, two pedestrian bridges, a pedestrian stairway, and paved parking lot. Portable toilets are used year-round.
- **Use.** Use of the park is primarily passive in nature. Neighborhood residents and senior citizens residing in a housing development adjacent to the park use the facilities. In addition, County residents visit the dog park for some off leash fun with their dogs. Some downtown special events are also held in the park. Additionally, Rotary Park serves as a destination site along the Linear Park Pathway.
- **Accessibility.** (Accessibility Ranking – 2) Some parts of the park provide accessible paths; however additional renovations need to be made to connect the playground equipment and access points along the Flint River.



Veterans Memorial Park

- **Location.** Just east of M-24 off Nepessing Street.
- **Size.** Roughly 1/4 acre.
- **Natural Features.** Open space with some mature trees.
- **Facilities.** WWI, WWII, Korean, Vietnam, and War on Terror monuments, and a flagpole to honor veterans.
- **Use.** Passive enjoyment and some special events to honor veterans.
- **Accessibility.** (Accessibility Ranking – 1) Roadside park off Nepessing Street. There is currently only a sidewalk around the park. No other amenities exist on-site that would need barrier-free access.



City of Lapeer

Rowden Park

- Location. Off north Lapeer Road (M-24).
- Size. 65 acres, the City's largest park.
- Natural Features. Large wetland, woodland, and open space areas. Mature trees border this park. The area is host to a variety of plant and animal species typical of natural habitats.
- Facilities. One mile of continuous asphalt pathway, two boardwalks over the wetland areas, two pedestrian bridges, two pavilions, three lighted tennis courts, a ball field, a playground with safety surfacing, a sledding hill, two parking lots, and year-round restrooms. All of the facilities are accessible with the exception of the ball field.
- Use. Use of Rowden Park is both active and passive because of the available facilities. Rowden Park is visited by neighborhood residents located to the south and area-wide residents visiting the park and using the Linear Park pathway. Rowden Park also serves as the northern anchor for the "rails to trails" development which connects to several downtown parks by way of the Linear Park Pathway. Rowden Park also serves campers at the adjacent Water Tower Travel Trailer Park.
- Accessibility. (Accessibility Ranking – 4) The park meets most of the ADA-accessible guidelines; however renovated routes to the ball fields and other park features can be improved (i.e. playground equipment). The pedestrian bridge and boardwalks are in good condition and are universally accessible. Additional trails, companion seating, and restroom facilities would also promote universal access.



Water Tower Travel Trailer Park

- Location. Off north M-24, immediately adjacent to Rowden Park.
- Size. 3.5 acres.
- Natural Features. Some trees and a pond. The park shares the natural wetland and woodland features of Rowden Park. A steep bank helps separate the park from the adjacent highway.
- Facilities. A gravel/stone lot with 24 camp sites each containing electric and water/sewer utilities. Restrooms/showers and a dump station are also available. Managers reside on-site to operate the park.
- Use. Use of the park occurs by visiting campers from May through October each year. Moderate use in the spring steadily increases to its peak in the summer months and declines again in the fall. Single night, weekly, and monthly guests stay at the park.
- Accessibility. (Accessibility Ranking – 2) Parking for the site is limited to gravel. To better provide universal design/barrier-free access, improvements to the parking lot should be made to include enough ADA-accessible parking spaces for patrons to use. Also, connecting paths around the site and improvements to comfort stations (i.e. restroom/shower facilities). Currently, there is no accessible route from the trailer parking to the restroom/shower building.



Woods at Oakdale

- Location. Off of Davison Road, directly west of Rolland-Warner M.S. adjacent to Davison Road. The southern-most end of the property stops at the railroad corridor.
- Size. 37 acres.
- Natural Features. 100 percent woodland.
- Facilities. Two bridges give access over an old drainage ditch. One connects the northern/southern portion of the property and the other in the southwest corner serves as another connection to the entire property. Newly-developed Oakdale Trails are a natural surface, single track that run throughout the property.
- Use. This property serves as an active recreation area used mainly for hiking, running, and biking in the warmer months and snow shoeing, cross-country skiing, hiking, and fat-tire biking in the winter/cooler months.
- Accessibility. (Accessibility Ranking – 2) Site has some accessible amenities but is mostly a rustic setting for outdoor recreational activities.



Ed LaClair Pocket Park

Location. Downtown Lapeer on Nepessing Street next to the PIX Theatre.

Size. Approximately 40 feet across by 120 feet deep.

Natural Features. N/A

Facilities. Several custom benches and tables, an entertainment stage with electricity, and a public art display.

Use. This is a generally passive recreation space.

Accessibility. (Accessible Ranking – 5) Pocket park provides seating that is accessible and paths through the site that promote universal access. Site is one of the newest park properties within the City.



Goals and Objectives

Goals are defined as general purpose statements of what the City should be. Objectives are specific items that help the City to implement that goal. The following goals and objectives are intended to provide a framework for future decisions related to the provision of parks and recreation for the City of Lapeer. These goals and objectives should be reviewed annually and modified as necessary.

Goal: The City of Lapeer will offer parks and recreation facilities that meet the diverse needs and interests of the community.

- Evaluate potential new park development opportunities for needed and desired active and passive recreation facilities such as athletic fields, pickleball court, indoor tennis court skate parks, amphitheater, and seating areas.
- Establish standards in the zoning ordinance that require new residential projects to include and develop minimum areas for active and passive recreation to serve future populations.
- Study the need for expansion of existing or the addition of new facilities at the community center.
- Monitor the use of athletic fields and facilities to determine additional needs.
- Create recreation opportunities that go beyond the traditional team sports such as educational components, individual sporting pursuits, and training/self-improvement courses.
- Maintain open communication with other recreation providers for opportunities to joint venture on larger improvement projects and regional recreation demands.
- Explore options to improve communication from one central location regarding parks and recreational activities, programs, and maintenance.
- Identify and preserve areas with key natural features and wildlife habitats.
- Continue to partner with Lapeer Community Schools and other organizations to provide a wide range of services to the greater Lapeer Area.

Goal: The City of Lapeer will offer high quality parks, recreation facilities and open space areas that are well-maintained and ensure a pleasant experience for users.

- Improve barrier-free accessibility of the City's parks and recreational facilities through accessible pathways and upgrading equipment to meet accessibility standards.
- Pursue the paving of parking lots to improve accessibility.
- Develop a program of consistent signage, lighting, benches, and waste receptacles at all City parks, compatible with other City facilities.
- Maintain and update park equipment and facilities as needed, including playground equipment, hard pavement surfaces, and landscaping.
- Provide additional seating areas at City parks.
- Continue to partner with local sports organization that help to maintain park facilities.
- Evaluate off-street parking needs in all parks and make improvements where necessary.

Goal: The City of Lapeer will offer a variety of recreation programs and events that promote a high quality of life for residents and encourage interaction of its residents.

- Coordinate with other recreation providers to prevent duplication of services and avoid unnecessary competition.
- Monitor recreation programs to ensure they meet the desires of residents and accommodate enrollment figures.
- Evaluate programming fees to create a balance between covering costs while maintaining affordability for area residents.
- Keep abreast of the latest trends and preferences in recreation as well as local desires.
- Expand programming for environmental and natural features education utilizing local parks such as Rowden Park, Prairies and Ponds, Woods at Oakdale, and Farmer's Creek.
- Continue to expand senior programs to meet their unique social and recreation interests.
- Continue to partner with PIX Theater, Gallery 194 and other organizations to provide a wide range of services to the greater Lapeer Area.

Goal: The City of Lapeer will develop an interconnected park system that increases accessibility to key destinations in the City and provides a comprehensive pathway system.

- Link park facilities and key points of interest, such as downtown, schools, and neighborhoods to create a linear park system throughout the City.
- Develop pathways for multiple users including walkers, joggers, runners, rollerbladers, and bicyclists.
- Encourage walking and bicycling as alternative transportation options to help reduce emissions and improve the environment.
- Increase accessibility within City parks by creating internal pathways at applicable parks.
- Utilize road, utility, and railroad corridors to provide off-road pathways.
- Consider opportunities to incorporate the City pathway system into a regional network.
- Partner with the Planning Commission to ensure sidewalks are required in areas to improve connectivity within the City.
- Update and implement the Non-Motorized Transportation Plan.
- Continue to make improvements and add amenities to the trailways like bathrooms, safety stations, etc.
- Maintain coordination with the Flint River Watershed as a stakeholder member of the Flint River Water Trail (State of Michigan and National Water Trail Designation).

Goal: The City of Lapeer will effectively and efficiently implement the recommendations of this plan.

- Coordinate the Five-Year Action Program with the City's capital improvement program.
- Work with the Planning Commission and City Commission to consider parks and recreation in development proposals and City plans.
- Review the Parks and Recreation Master Plan annually to establish priorities and responsibilities with the Park Board.
- Continue to aggressively explore grants and alternative funding opportunities for improvement projects.

Action Plan

Park	Actions
ANNROOK PARK	<ol style="list-style-type: none"> 1. Add a paved pathway to the pavilion and playground for accessibility 2. Provide significant, long-term upgrades to improve its presence in downtown and serve as an event and gathering area as follows: <ul style="list-style-type: none"> • Add a formal pedestrian link from Nepessing Street, down Pine Street, through the parking lot to the Annrook Park bridge crossing • Replace bridge over Farmer's Creek with a wider, grander pedestrian bridge • Improve the greenbelt along the banks of the Farmer's Creek, including decorative bank stabilization • Consider for use as a location for special events • Consider acquisition of the two houses located along Court Street.
AUDUBON PARK	<ol style="list-style-type: none"> 1. Maintain Park
COMMUNITY CENTER	<ol style="list-style-type: none"> 1. Complete a comprehensive update to the community center including: <ul style="list-style-type: none"> • Consider indoor spaces for a senior area, teen area, game room, indoor playground, massage, group fitness, dance studio, vending, and maintenance • Add a larger family locker room, and use the existing family locker room to provide additional private showers and private changing rooms to the women's locker room • Increase storage adjacent to the lower lobby • Add a new weight/fitness area for additional equipment and consider 24-hour access • Replace the flooring in the childcare room • Remove the carpet from walls around the track • Paint the purple above the track to a new neutral color • Add dedicated group fitness and dance studios • Change Multipurpose Rooms #2 and #3 to tile floors and continue to use for meeting/party rooms 2. Install an outdoor pavilion
CRAMTON PARK	<ol style="list-style-type: none"> 1. Install MDOT underpass as part of M-24 reconstruction project – In progress; the tunnel is in. 2. Pave existing south side parking lot 3. Pave an 8' wide pathway from the south parking lot to the Kiwanis pedestrian bridge 4. Pave a 10' wide pathway from the pedestrian bridge to the new M-24 underpass 6. Pave a 10' wide pathway extension from the existing pathway on the north side of the park to connect to the new underpass 7. Add portable toilet/shelter 8. Address tennis courts, determine potential location for pickleball courts, and upgrade lighting
EAST ANNROOK	<ol style="list-style-type: none"> 1. Maintain Park
FARMER'S CREEK AT OAKDALE	<ol style="list-style-type: none"> 1. Pathway lighting from DeMille to Mott campus 2. Pursue opportunities for canoeing and/or kayaking facilities along Farmers Creek and the Flint River
LAPEER OPTIMIST COMMUNITY SOCCER FIELDS	<ol style="list-style-type: none"> 1. Consider acquisition of additional property around existing fields for future/long-term multi-purpose use

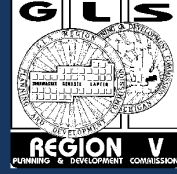
Action Plan

LINEAR PARK PATHWAY	<ol style="list-style-type: none"> 1. Maintain pathway, bridges/boardwalks, signage, etc. along City-owned abandoned railroad corridor and within City parks 2. Implement the recommendations of the City-wide Pathways Plan, to develop a comprehensive pathway network linking parks, schools, neighborhoods and other key destinations 3. East/west connection from East Annrook to Mott campus 4. Suncrest connector to Davis Lake Road to link to Rowden Park 5. Study need and cost to install lighting in strategic locations 6. Re-asphalt sections of the older pathways
Oakdale Trails	<ol style="list-style-type: none"> 1. Continue to maintain and support collaborative efforts
PERKINS PARK	<ol style="list-style-type: none"> 1. Repair the existing pavilion with a new roof and concrete slab 2. Install improved signage and landscaping 3. Replace playground
PRAIRIES AND PONDS AT OAKDALE	<ol style="list-style-type: none"> 1. Acquire the vacant land surrounding the ponds to protect the environment 2. Acquire and remove the billboard east of the park 3. Pathway connection to Big Lots – in progress
RIVERFLAT PROPERTY	<ol style="list-style-type: none"> 1. Study the development of a riverside pathway system connecting Annrook and Cramton Parks including a linkage to downtown 2. Install seating areas along the river
ROTARY PARK	<ol style="list-style-type: none"> 1. Extend a paved pathway to the existing facilities to improve accessibility 2. Add a permanent restroom similar to Rowden & Cramton Park
ROWDEN PARK	<ol style="list-style-type: none"> 1. Address tennis courts, determine appropriate pickle ball court location, upgrade lighting and fencing 2. Improve the ball diamond including infield, dugouts, and backstop 3. Plant additional trees around the parking lot 4. Remove old, decommissioned light poles 5. Upgrade tennis court lighting
VETERANS MEMORIAL PARK	<ol style="list-style-type: none"> 1. Consider additional benches

Action Plan

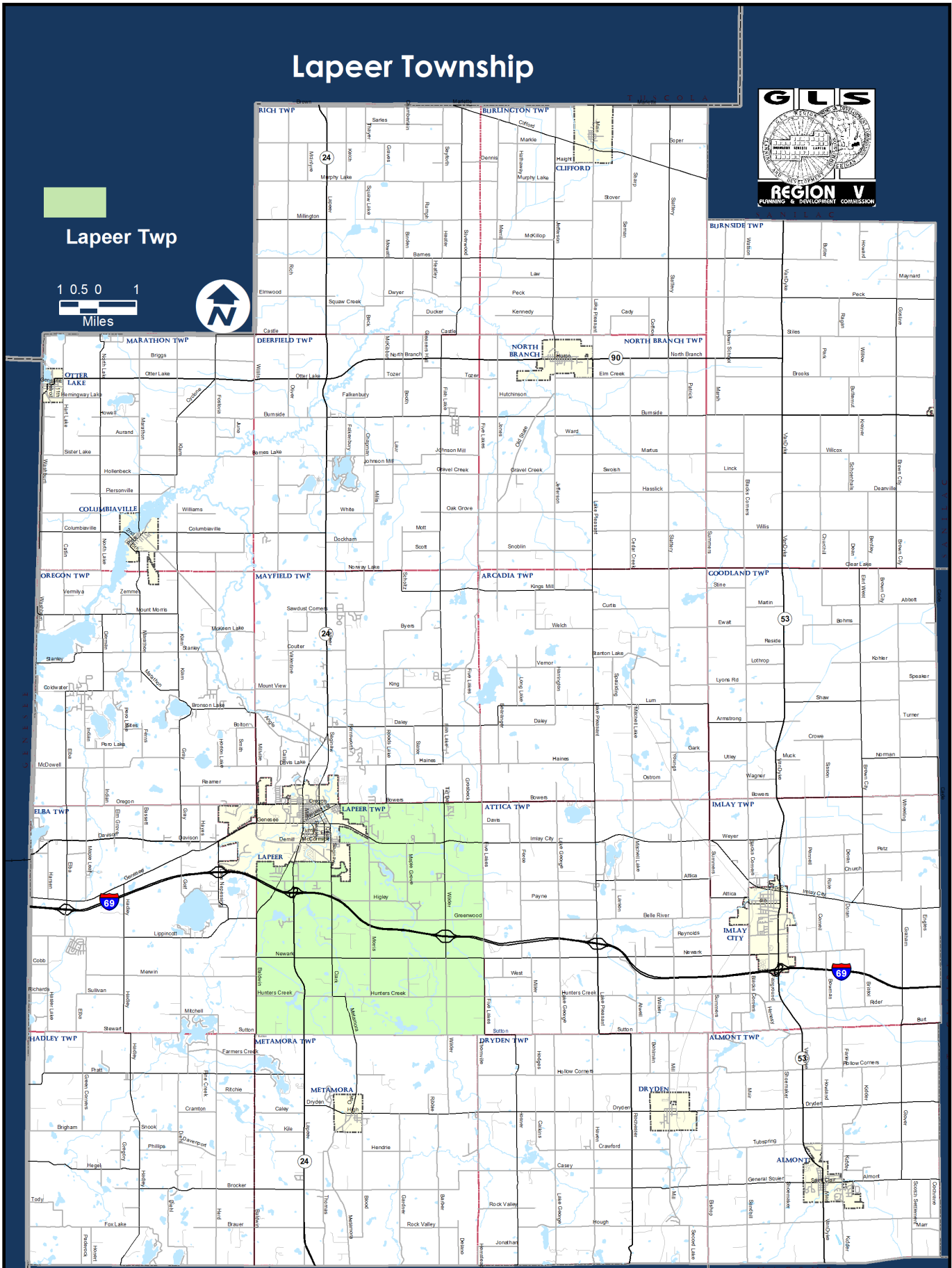
WATER TOWER TRAVEL TRAILER PARK	<ol style="list-style-type: none"> 1. Upgrade electrical 2. Add cable connections at each site 3. Improve Wi-Fi capabilities 4. Reconfigure park to accommodate larger rigs and more spaces 5. Consider conducting a study to evaluate the development and design of the campground to improve the area.
MISCELLANEOUS	<ol style="list-style-type: none"> 1. Continue to monitor community interest in development of additional facilities such as skate-board/rollerblade park, frisbee, golf, etc. 2. Continue to follow policy standards for parks and open space for new developments 3. Preserve the woodlands on Genesee Street just west of Woodside School for a natural learning habitat with potential interpretive trails 4. Consider acquisition of property in the I-69/M-24 annexed area such as Pose Lake, adjacent soccer field, Farmer's Creek corridor, Prairies and Ponds, non-motorized easement, etc. 5. Identify and preserve areas with key natural features, particularly on the City-owned Oakdale property south of DeMille Road 6. Encourage non-motorized facilities as part of future road improvement projects, consistent with the City's Complete Streets Policy 7. Complete south side Genesee Street/Davison Road east-west pedestrian and bicycle connection <ul style="list-style-type: none"> • Genesee pathway extension (including two 14' wide elevated boardwalks) from Prairies and Ponds to The Pier of Lapeer • Genesee sidewalk connection from The Pier of Lapeer to the existing sidewalk at Suzanne Drive 8. Encourage a road diet and re-striping of Genesee Street to include an east-west bicycle lane 9. Maintain existing kayak launches and coordinate with the Flint River Watertrail on future access points, signage, and other improvements.

Lapeer Township



Lapeer Twp

1 0.5 0 1
Miles



Lapeer Township

Community Description

Lapeer Township is located in the south-central portion of Lapeer County. The City of Lapeer, which is the county seat, abuts the Township to the north and west. The City of Flint is located 16 miles to the west. The Township is served by two state highways, M-24 is the major north/south thoroughfare and M-21 runs east to west. The main commercial area is along the M-21 corridor just east of the City of Lapeer.

Much like the nation as a whole, Lapeer Township has seen a continual increase in the median age of its residents. In 1970 the median age was 23.1 years of age. The median age since has risen to 44.3 years of age, surpassing the median age for the nation by over seven (7) years. Part of this increase can be attributed to the aging of the baby boomer population. However, more specifically to Lapeer Township, the median age may be more closely tied to the median housing prices. With higher median prices, the majority of persons who can afford to build or buy residences within the Township are those which are living in their second or third residence and are therefore older.

Administrative Structure

Lapeer Township is governed by an elected board of trustees and is solely responsible for decisions relating to Parks and Recreation. Most planning activities related to recreation planning will be done by the Township's Planning Commission. The Planning Commission will then provide recommendations to the Township Board for the creation of parks, parks improvements, and parks and open space acquisition. The Township Board will then act on such recommendations and allocate monies as appropriate. The Township will not have a full time or part time recreation director or administrator. The day-to-day duties relative to recreation will fall to the administration and community volunteers.

Budgets

Currently there is no funding in place for parks; since the township does not manage or maintain any parks in the area. One of the main goals for this community is to promote the continued development of a Parks and Recreation Commission which will plan for proper parks and recreation facilities, pathways and recreation programs within Lapeer Township.

Recreation Inventory

Currently the Township maintains no parks. The Township has open land area located at the Township Hall. Amenities offered include a pavilion, a basketball half court, playground equipment and a walking path that has both paved and aggregate sections.

Accessibility assessment: Some of the park facilities meet accessibility guidelines.

Lapeer Township

Goals and Objectives

Administrative

- First and foremost, it is the goal of this recreation plan to promote the continued development of a Parks and Recreation Commission which will plan for proper parks and recreation facilities, pathways and recreation programs within Lapeer Township.
- Apply for grants for the development of parks and pathways within the Township which will benefit Township residents as well as provide regional pathway connections.
- Work with the Township Board to reserve a certain portion of the Township's overall budget for recreation development or open space acquisition purposes, thereby providing a continual recreational funding source.
- As the Township continues to grow, establish a separate Parks and Recreation Commission to handle the development and administration of the Parks, Recreation and Open Space Plan.
- Ensure that proper maintenance of parks occurs on an annual basis. This includes proper budgeting, proper facility care and designing park improvements to be low maintenance.
- Review the potential for earmarking portions of the monies received from development within the Township/City's 108 agreement area for recreation purposes.
- Work with adjoining communities to establish resolutions or joint resolutions for cooperation in recreation planning and recreation projects.

Parks

- Continue to develop the park site located at the Township Hall, which utilizes the remainder of the ten (10) acre site, for active and passive recreation purposes. Additional park development could include the following:
 - ♦ Additional pathways or paving of pathways
 - ♦ Additional play structures, including climbers, tot structures, etc.
- Determine the necessity for additional park properties within the Township, the appropriate locations for such properties and explore the potential of acquiring such properties through grants, open space developments, easement acquisition, etc.
- Work with private land owners to acquire environmentally sensitive properties adjacent to lakes, ponds, wetlands, rivers etc. to help maintain appropriate flood control, minimize soil erosion as well as provide necessary open space for Township residents.
- Encourage private and public efforts to continue to improve and expand the Township park and recreation system.
- Design facilities in a manner that is environmentally sustainable and sensitive to the natural resources located at each site.
- Consider the impact on neighbors to the park(s) in designing and locating park and recreational facilities within such park.

Lapeer Township

Parks Continued

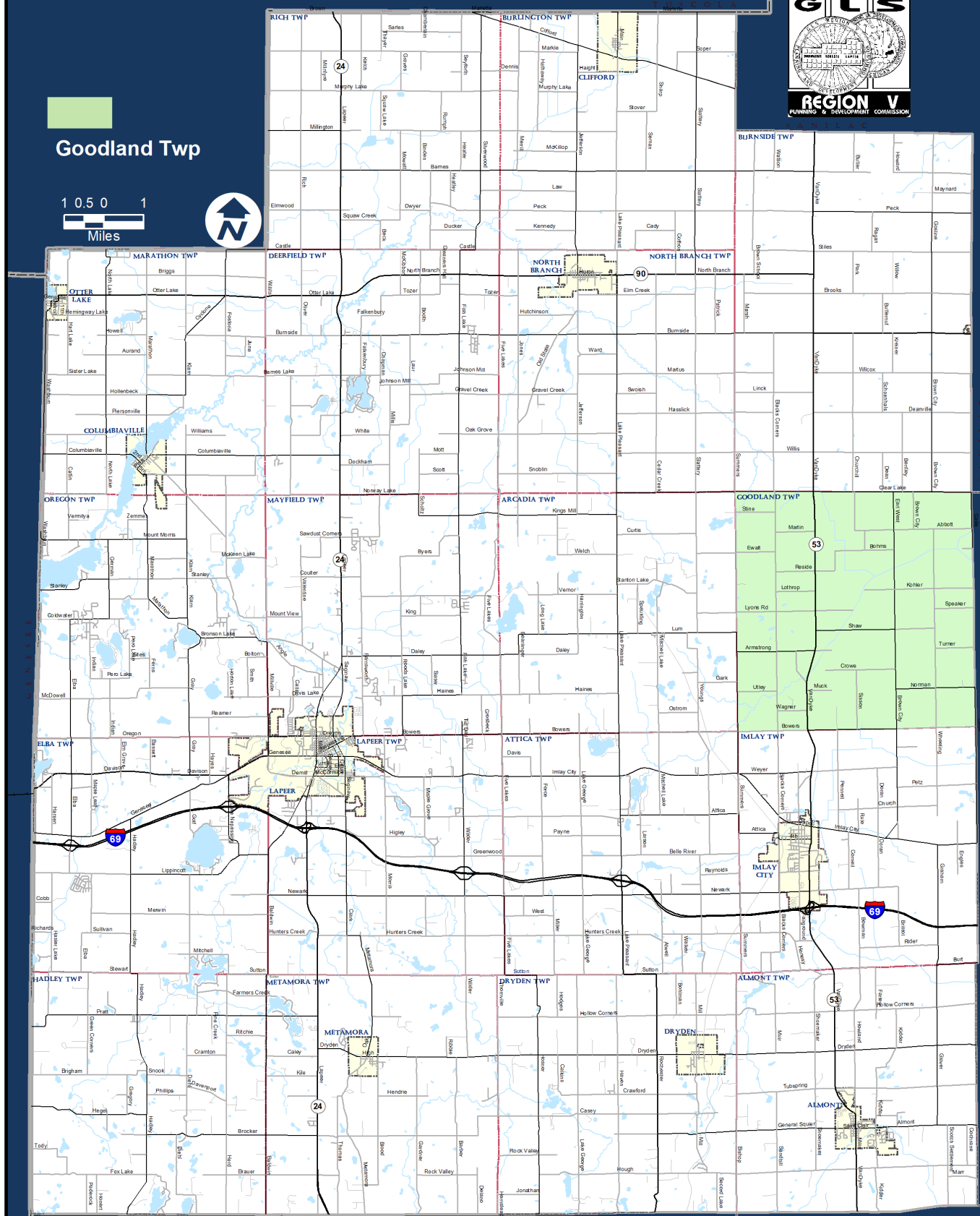
- Design facilities with flexibility to accommodate changes in population demographics, technology, park and recreation trends, and personal preferences.
- Provide facilities that are readily accessible to and usable by all types of individuals including those with disabilities or are otherwise challenged.
- Coordinate programs and plans of other local and regional parks and recreational agencies, including local school districts, Lapeer County, and adjoining communities.
- Develop the Whelock Lake property to provide an accessible trail, 10' x 20' boardwalk overlook and pedestrian bridge.

Pathways

- Develop an overall Township wide pathway system which will provide a connection between all of the current recreational and public facilities within the Township. If new facilities become available determine the necessity for a connection to the overall system and if necessary the best manner in which to connect it.
- Work with the surrounding Townships as well as the City of Lapeer in coordinating the development and connection of planned pathways to allow for a unified pathway system which will ultimately connect to larger regional pathways. Of particular importance is the connection of the Township to the City Recreation Center, the City's soccer fields, and all school facilities.
- Develop Ordinance requirements which require private development to provide pathways along designated roadways for the full frontage of such development.
- Maintain an accurate inventory of pathways within the Township, including those currently installed and those planned to be installed. This will also include sidewalks and pathways located within private developments.
- Link park land, wildlife and plant life habitats, and Township facilities through greenway corridors that could include trails, but primarily offer a connected system of land between community resources.
- Ensure that if roads and/or bridges within the Township are reconstructed as a part of road repair or expansion that accommodation are made to allow for shared use with bicycle and walking traffic either by additional road width or separate pathway.

Action Plan

- Ongoing maintenance to the Township Hall park site will be a focus of the Township, including mowing, pathway maintenance and cleaning of the pavilion.
- Expand the amenities offered at the Township Hall Park site. Before major improvements are undertaken at the park, additional public input will be sought to determine the types of improvements that are desired by the residents as a whole.
- Expand the Township's pathway system by working with adjacent municipalities. Prioritize new pathways that connect Lapeer Township residents to recreation facilities within the Township or in nearby communities.



Goodland Township

Community Description

Goodland Township is located in eastern Lapeer County, in southeastern Michigan, with the city of Lapeer located 13 miles to the southwest. The Township is centered on the unincorporated community of Goodland. Goodland Township is bordered by Burnside Township to the north, Imlay Township and Imlay City to the south, Arcadia Township to the west, and St Clair County to the east. Goodland Township is a rural county with the standardized total of 36 square miles.

The major motor vehicle route with north-south access through Goodland Township is M-53, connecting the Township to Imlay City and I-69 to the south. There are two small creeks within the Township, and Elk Lake Creek which merges with North Mill Pond Creek flows from the northeast corner to the southwest corner of the Township and a few small lakes in the west.

Administrative Structure

Goodland Township is governed by a Township Board whose members are as follows:

Ron Cischke, Supervisor
Mavis Roy, Clerk
Lou Parsch, Treasurer
Norm Tanis, Trustee
Michael Juip, Trustee

The supervisor serves as the Chairperson of the Board and all members are elected officials. The Supervisor carries out functions and duties prescribed by the Board necessary for the governing of the Township. The organizational chart below depicts the hierarchy of the Township.



Goodland Township appointed a Parks and Recreation Committee to help oversee the development of The Recreation Plan and to assist in determining the preferred parcels of land to seek for future parks. It consists of 5 members. The Township is responsible for parks operations and maintenance. As the planning process moves forward, with the primary goal of creating park opportunities for the residents of Goodland Township, the Township Board more specifically, Ron Cischke, the Supervisor and Mavis Roy, the Clerk will be responsible for accepting grants and purchasing land.

The members of the recreation committee are as follows:

Frederic Lothrop
Norm Tanis
Sarah Boyd
Michelle McKee
Robert Sommer

Goodland Township

Programming, Volunteers, and Cooperative Relationships

As Goodland Township is just creating their first Recreation Master Plan, and formed their first Parks and Recreation Committee in 2015, there are not currently any relationships with school districts, other public agencies, or private organizations. The Parks and Recreation Committee recognizes the value in creating effective partnerships and understands that these relationships could have many potential benefits. As the planning process continues, the committee will work toward creating partnerships with groups in the community.



Funding and Budgets

The Goodland Township board has the authority to commit funds to a recreation project. Currently Goodland Township does not have any parks, however there will be budgeted money in the General Fund for park grant matching dollars. The amount will be determined when the desired parcel of land has been identified. Currently, Goodland Township offers open green space around the Township Hall, which they maintain in addition to the historical display. The current budget for maintenance and the historical display is approximately \$5,000 per year. These funds come from the general fund and donations.



Goodland Township

Recreation Inventory

Currently, Goodland Township has no formal recreation or park space within its boundaries, but the Township has taken steps to preserve its important historic buildings. The Township owns the land surrounding the current Township Hall, and has relocated the old town hall building to this land. This building is now used as the Township library. The community is also considering moving other historic buildings to this property to bring educational and recreation opportunities to this central government location.

Goodland Township is exploring the acquisition of a parcel of land that will be used as the Township's first public park. The Township views this land as a benefit to the overall quality of life for the residents. Ideally the Township would like to use Michigan Department of Natural Resources grant funding to assist in the acquisition of this parcel. Goodland Township has received no prior grants from the Michigan Department of Natural Resources.



Goodland Township

Goals and Objectives

Goodland Township formulated the goals and objectives based upon the characteristics of the overall community, public input, and the input received from officials in the community. Goals are broad and address general needs, and establish the basis for expanding programs, and facility objectives. The objectives carry out the purpose of the goal, and are measurable results that the community works toward accomplishing.

Goal 1: Acquire park land to meet recreation needs of the citizens.

Objective: Identify a parcel of land for a future park.

Objective: Seek available grant funding for its purchase.

Goal 2: Develop park land to provide recreation opportunities for all age groups and accessibility.

Objective: Ensure all park facilities are physically accessible to people of all ages and ability levels.

Objective: Ensure facilities meet the needs of park users.

Objective: Develop facilities that can be gathering points for festivals and community events.

Goal 3: Provide safe and attractive recreation facilities that improve the overall quality of life for residents.

Objective: Provide adequate facilities to ensure a safe environment.

Objective: Ensure that a park that is developed in Goodland Township is well-maintained and clean.

Goal 4: Improve the health and fitness of Goodland Township residents.

Objective: Provide recreational programming for all residents of Goodland Township.



Goodland Township

Action Plan

The Recreation Plan is intended to be the guiding document for Goodland Township in regards to the next 5 years of goals and capital improvements regarding parks and recreation. The action plan is the most specific, and it identifies particular projects. The action plan details the direction that will guide the activities in the Township for the next 5 years.

Goodland Township Recreation Action Plan
Action Items
1. Seek a Grant to Acquire New Park Land
2. Develop a Park Master Plan for when Park Land is Acquired
3. Seek Grants to Help Develop the Park Land

Acquiring park land and developing a park is new territory for Goodland Township. The Parks and Recreation Committee will have a central focus of working toward the above action items. The Township will need to plan carefully and include residents and stakeholders in its process to develop consensus and support for park development.

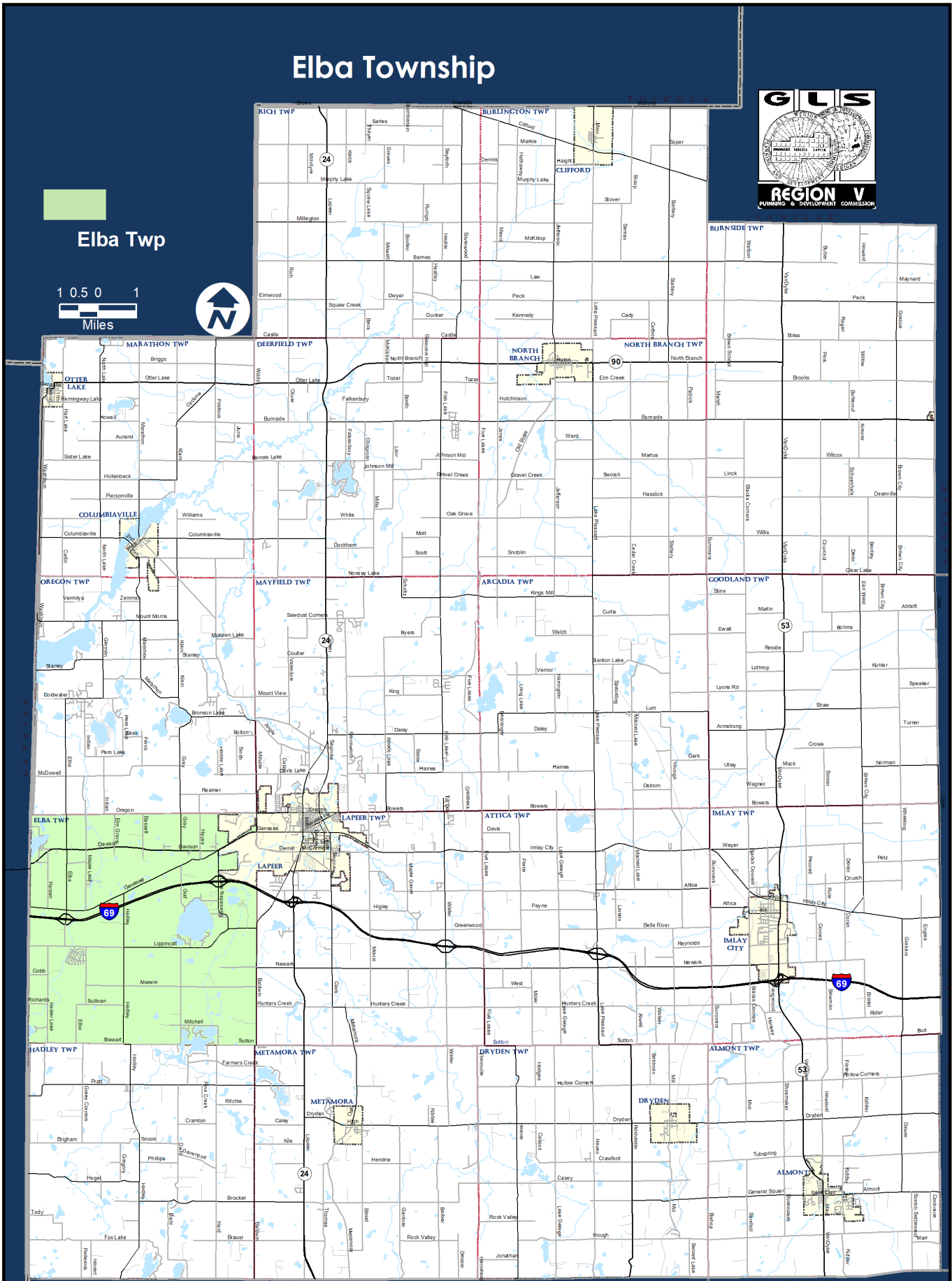


Elba Township



Elba Twp

1 0.5 0 1
Miles



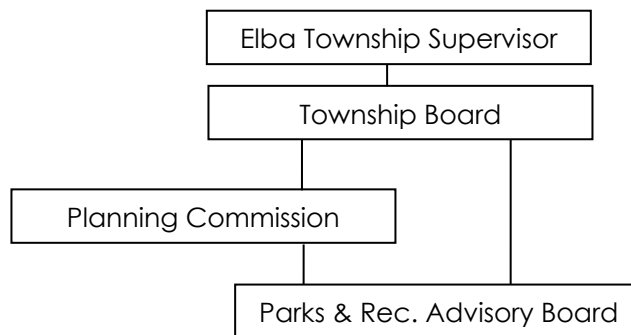
Elba Township

Community Description

Elba Township is located along the western border of Lapeer County in Michigan's thumb. The City of Lapeer sits to Elba's northeast, and the Township is just fifteen miles east of Flint, near Oakland County to the south, and only 45 miles from the heart of Detroit. While home to a small number of local commercial, industrial, and agricultural businesses, Elba draws much of its residential populations from the heavy industrial workers of its two neighboring metropolitan centers. According to the 2020 Census, Elba Township has a population of 5,235 .

Administrative Structure

The development of recreational facilities and opportunities within the Township is the responsibility of the seven-member Planning Commission. This Commission falls under the direction of the Township Board. A Parks and Recreation Advisory Board provides insight to the Planning Commission and consists of members from the Planning Commission, Township Board, and general population.



Programming, Volunteers, and Cooperative Relationships

Maintenance of park facilities, above and beyond the nominal maintenance needs paid from the Township's general fund, are provided through volunteer efforts.

Budgets

Finances for parks come from donations and the general fund of Elba Township, from which \$5,000 has been set aside each year for recreational purposes. This annual allocation is used for any necessary park maintenance, such as mowing, with any excess funds being put into a fund balance for future park developments.

Elba Township

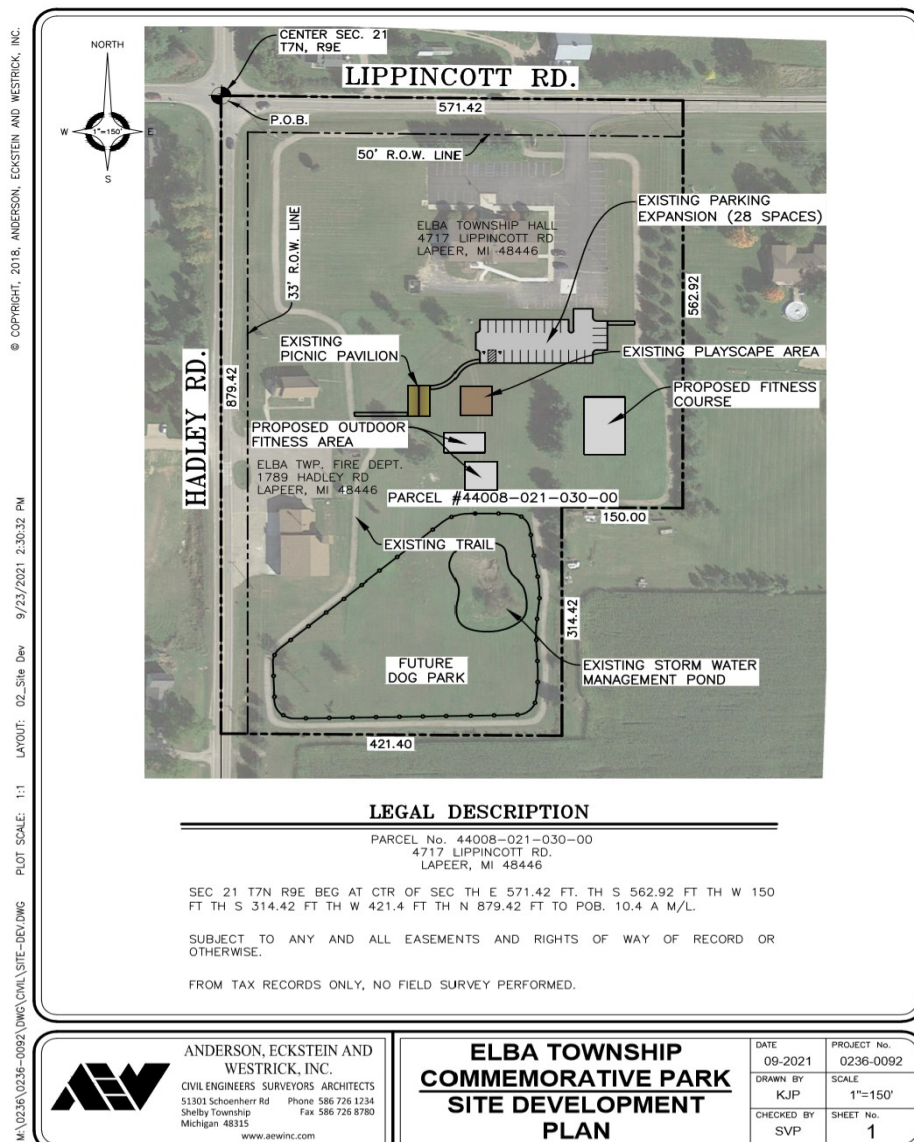
Recreation Inventory

Elba Township Recreation Inventory		
Recreation Area	Acreage	Accessibility Score
Elba Township Commemorative Park	10.4	N/A*
Elba Township Nature Park	23.92	2

Elba Township Commemorative Park

Elba Township Commemorative Park is a proposed park that expands the current recreation opportunities provided at the Township Hall. This area currently has a walking path approximately .5 miles long. The proposed improvements will offer playground equipment, gathering spaces, and active recreation options.

*Accessibility Score: The park has not yet been completed; however, the Township hall itself does address all necessary ADA standards (4) and the walking path addresses some of ADA standards (2).

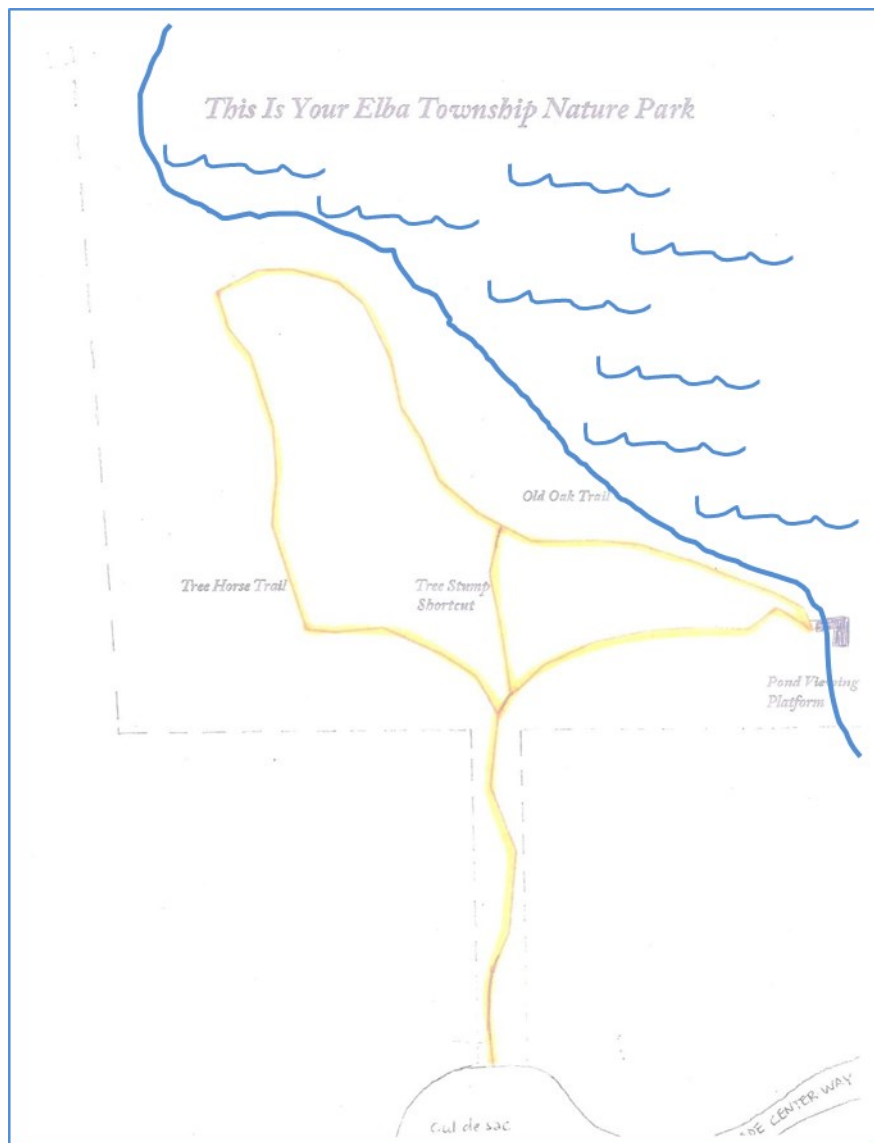


Elba Township

Elba Township Nature Park

The second park is the Elba Township Nature Park, which is a 23.91 acre parcel of land that was donated to the Township under the condition that it be used as a park. The majority of the park is a wetland pond with surrounding associated foliage. The pond is home to ducks and other water birds. The land is wooded with a wide variety of plant life. Special features of the park will include a wandering footpath leading to platforms providing scenic overlooks, a picnic

*Accessibility Score: The Elba Nature Park meets some accessibility guidelines (2), however, the trail is not accessible in many areas.



Goals and Objectives

The goals and objectives below were formulated using past recreation plans for Elba Township.

Goal: Enhance the quality of life in Elba Township

Objective: Develop a recreation area to permit wildlife appreciation and non-motorized water activities.

Objective: Develop a recreation area to provide active recreation, outdoor gathering space and a children's play area.

Goal: Cooperate with state and county authorities, as well as other agencies, in the development of recreation opportunities.

Objective: Continue to coordinate recreational opportunities with Lapeer County and surrounding communities to complement existing offerings.

Goal: Preserve natural resources and habitats for recreation opportunities

Objective: Develop local recreational opportunities, specifically for children and families to use daily in the Elba Township Commemorative Park.

Goal: Include recreation and open space areas in future residential development areas.

Objective: Revise subdivision standards to require a minimum amount of public open space be included in every development.

Goal: Provide a range of recreational activities for all ages

Objective: Develop a recreation area to permit wildlife appreciation and non-motorized water activities.

Objective: Develop a recreation area to provide active recreation, outdoor gather space and a children's play area.

Goal: Work with community volunteers

Objective: Create opportunities for volunteers to help in the construction, material acquisition and maintenance of recreational facilities through public means and the aid of private groups such as Ducks Unlimited, Lions, etc.

Action Plan

Elba Nature Park

The following steps will be taken to further develop the park:

1. Signage will be developed on Lake Nepessing Road directing residents to the parks parking area, and the park entrance will be clearly identified with signage that provides general park information.
2. A picnic area with bike racks will be constructed to allow for family outings.
3. Construct a boardwalk to viewing areas in the wildlife park.
4. A gazebo will offer a covered area for small gatherings as well as wildlife viewing of the wetlands.
5. Two wheelchair accessible scenic overlooks will give visitors views of the wetland habitat.
6. A canoe launch will be constructed to allow access and exploration of the wetland.
7. Promote fishing in wildlife waterways.
8. Identify trees and plant life with interpretive signage and potential programming opportunities for schools.

Elba Township Commemorative Park

This park is intended to meet the more active interests of residents and to take the place of the limited playground settings available through two local elementary schools.

1. A pavilion will be developed for outdoor gatherings and small events.
2. A picnic area with grills and tables will encourage families to spend time outdoors and offer picnic options for apartment dwellers and others with no outdoor cooking facilities.
3. A horseshoe pit will be built.
4. Playground equipment in a fenced area to allow safe and free play for children.