



AxxS Tablet is an education tool and an entertainment tablet. The tablet offers a wide range of services delivered on locked-down, secure, and rugged tablets. The content includes Educational material, GED study guides, News, Books and Magazines, Workforce Integration, Reentry to Recovery, Religious Devotion, Movies, Music, Games, and More.

Your facility is responsible for which services are enabled and active on the devices. All AxxS Tablet content is pre-approved for viewing and securely delivered on an Apple iOS device.

Device Rules:

Tampering with the housing or software security of the device will risk losing device privileges and being charged for the damage. The T&C's make you responsible for the device. If it is broken while in your custody, you will have to pay \$500.00.

How do I pay for AxxS Tablet

Funds must be added to the your account to use the tablet. Instruct your family/friends to go to InmateSales.com or call 877-998-5678.

Users will receive 5 free minutes each day.

If you do not have funds added after the first free 5 minutes, you will not be able to use the tablet any longer.

Service Fee

Each service will tell you its cost and how much time you have available based on current balance.

Available Balance - Your balance is calculated in real time and always displayed at the top of the screen.



Combined Public Communications is providing your facility with AxxS Tablets.

Please read inside for more information





Getting Started

Login = Inmate ID (same as you use to make phone calls.)

Password = initially is set to your 8 digit birthday mmddyyyy

Example Birth Date =

December 31, 2019 –

month, day, year - then

PW = 12312019

Security Question – On your first time login, you must answer two security questions.

Forgot Password – Enter username, answer your security questions. If you forgot the security answers you click:

Forgot Security Questions? This will take you to a new screen to enter your username and birthday.

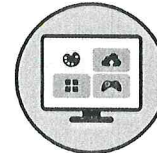


Tablet Services

Examples



Music



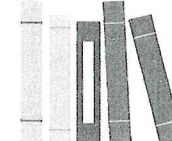
Games



Movies



News, Sports & More



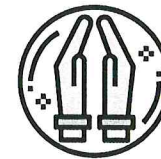
Books & Magazines



GED Study Guide



Legal Content



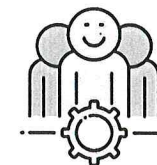
Religious Devotion



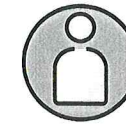
Education Center



Reentry To Recovery



Workforce Integration



My Account

Once you are logged into the tablet, you can go to My Account and do the following:

- Check Account Balance
- Manage Security Questions
- Change Password
- History of Service – review how much time was spent on different services

