



Lapeer County Board of Commissioners

255 Clay Street, Suite 301
Lapeer, Michigan 48446
Phone: (810) 667-0366
Fax: (810) 667-0369

WE HAVE A NEW WEBSITE! www.lapeercountymi.gov

A.R.P.A. COMMITTEE

MARCH 14, 2023

****11:00 A.M.****

*(**Estimated Time – Meeting will Commence following the Committee of the Whole**)*

2024 Committee Members: Kevin Knisely (Chair); Tom Kohlman and Gary Howell

~Meetings are held by the call of the Chair~

- 1) **CALL TO ORDER** BY CHAIRMAN/ACTING CHAIRMAN
- 2) CONSIDERATION OF THE **AGENDA**
- 3) CONSIDERATION OF THE DRAFT MINUTES FROM THE **JANUARY 11, 2024 MEETING**

NEW/OLD BUSINESS:

- 4) **BUILDINGS & GROUNDS/PARKS –**
 - A. UPDATE ON THE COUNTY'S VARIOUS HVAC/MECHANICAL SYSTEM UPGRADES/REPLACEMENT SUGGESIONS;
 - B. REQUEST TO PURCHASE A GENIE BOOM LIFT FROM ALTA EQUIPMENT COMPANY AT A COST OF \$35,900 TO ASSIST WITH VARIOUS BUILDING MAINTENANCE AND PARKS UPKEEP PROJECTS
- 5) **OTHER – (if needed)**
 - A.
 - B.

ADJOURN...

A.R.P.A. COMMITTEE
JANUARY 11, 2024

***CONFERENCE ROOM 302– ADMINISTRATION OFFICE, COUNTY COMPLEX
255 CLAY STREET, LAPEER, MI 48446***

Chairman Kevin Knisely called the meeting to order at approximately 10:50 a.m. in Conference Room 302 in the Administration Office on the third floor of the County Complex.

Commissioners Present: Commissioners Kevin Knisely, Gary Howell, and Tom Kohlman.

Others: Moses Sanzo, County Controller/Administrator; Jackie Arnold, CFO; Doreen Clark, Office Manager; John Bustle, Building & Grounds/Parks Director; Ben Woodfield, B&G/Parks Mechanical Supervisor; and Jillian Weiss-Clark, B&G/Parks Special Events Coordinator.

AGENDA

The agenda was reviewed.

Motion by Howell, supported by Kohlman, to approve the agenda as presented. Motion carried unanimously.

MINUTES

The minutes from the January 11, 2024 Special ARPA Committee Meeting held earlier today were distributed and briefly reviewed.

Motion by Howell, supported by Kohlman, to approve the minutes from the January 11, 2024 Special A.R.P.A. Committee Meeting held earlier today, as presented. Motion carried unanimously.

BUILDINGS & GROUNDS/PARKS – MECHANICAL UPGRADES/REPLACEMENTS

John Bustle and Ben Woodfield were present and distributed and reviewed a list of various Mechanical equipment and when they were installed, including the Complex, CMH, DHHS, Rich/Health Department, and Animal Control buildings. There are several units that will need to be replaced in order to provide more efficiency, less maintenance, and will put the County in good shape for the next 25-30 years. Lengthy questions and discussion followed. The Committee felt that these will be a good investment for the County.

Motion by Kohlman, supported by Howell, to authorize Building and Grounds/Parks Department to proceed with getting cost estimates and priority list of the needed Building Mechanical Upgrades/Replacements at various County facilities, as discussed, and to bring them back to the ARPA Committee for further consideration. Motion carried unanimously.

ADJOURN

Motion by Kohlman, supported by Howell, to adjourn the meeting. Motion carried unanimously. 11:00 a.m.

Kevin Knisely, Chairman
Lapeer County A.R.P.A. Committee

Minutes prepared by Doreen Clark, Office Manager

REQUEST FOR ACTION

DATE: March 6, 2024

_____ REQUEST FOR ACTION

___X___ FOR YOUR INFORMATION

_____ REQUEST FOR INFORMATION

TO: ARPA Committee

FROM: John Bustle – Director of Building and Grounds/Parks

SUMMARY OF REQUEST / INFORMATION:

Follow up to further review and discuss the HVAC upgrades/replacements to County Buildings. Attached are budgetary figures and numerical ordering indicating priority.

CONTACT PERSON(S): John Bustle, Director of Building & Grounds/Parks
Ben Woodfield, Mechanical Supervisor

ADDITIONAL INFORMATION:

SUPPORTING DOCUMENTS:

DRAFT MOTION:

Motion by _____, supported by _____,

ATTACHMENTS YES___ NO___

Johnson Controls Capital Planner for Lapeer County

These figures are submitted for budget purposes only. Your JCI Representative will provide a firm quotation when you are ready to proceed with securing final proposals.

3/4/2024

Lapeer County

| Project Description | Lapeer County Complex | Dept of Human Services | Community Mental Health | Health Department | TOTAL 2024 BUDGET |
|---|-----------------------|------------------------|-------------------------|-------------------|--------------------|
| Lapeer County Complex New Chiller and New Cooling Tower | \$475,000 | | | | #6 |
| Department of Human Services Digital Controls Upgrade | | \$150,000 | | | #5 |
| Department of Human Services Equipment Replacement | | \$275,000 | | | #3 |
| Community Mental Health Digital Controls Upgrade | | | \$390,000 | | #2 |
| Community Mental Health Chiller Replacement | | | \$150,000 | | #1 |
| Community Mental Health Boiler Replacement | | | \$70,000 | | #4 |
| Health Department Digital Controls Upgrade | | | | \$140,000 | #5 |
| Health Department RTU Replacement | | | | \$320,000 | #4 |
| | | | | | |
| Budget By Building | \$475,000 | \$425,000 | \$610,000 | \$460,000 | \$1,970,000 |

RTU Needs
As well as
40,000

Submitted By: Johnson Controls Inc.
1080 Tittabawassee
Saginaw, MI 48604

Representative: Randy Jeffery
Phone: 989-280-1097

Note: Budgets are submitted based upon 2024 projection
Please adjust budgets for inflation and labor increases in subsequent years
Suggested annual price escalation 10%

Source well

code violation.

REQUEST FOR ACTION

DATE: March 4, 2024

 X REQUEST FOR ACTION

 FOR YOUR INFORMATION

 REQUEST FOR INFORMATION

TO: ARPA Committee

FROM: John Bustle – Director of Building and Grounds/Parks

SUMMARY OF REQUEST / INFORMATION:

Request to approve the purchase of boom lift. With the renovations of Torzewski and the recent upkeep done to General Squier, it is pivotal that the department has the proper machinery to upkeep the slides. Slides need to be power washed and waxed at the beginning and end of each season. With the purchase of a boom lift, various other county projects can be completed, in house, such as tree trimming (upkeep of disc golf), parking lot lights, building repairs, and washing windows etc.

CONTACT PERSON(S): John Bustle, Director of Building & Grounds/Parks
Jillian Clark, Special Event Coordinator

ADDITIONAL INFORMATION: Boom lift fit on current equipment trailer with a working height of 40ft (slide 38ft).

SUPPORTING DOCUMENTS: see attached

DRAFT MOTION:

Motion by, _____ supported by, _____ to approve Building and Grounds to proceed with the purchase of Genie boom lift from Alta Equipment Company, at a cost not to exceed \$35,900.00, to be paid for from ARPA Funds (2.11).

ATTACHMENTS YES X NO

ALTA EQUIPMENT COMPANY

Check Out

| Header | | | |
|---------------|---------------|------------------|-------------------------------------|
| From Company | Alta bc | From Address | |
| From City | | From State | |
| From Zip Code | | To Company | riedstra dairy |
| To Address | | To City | |
| To State | | To Zip Code | |
| Carrier | | Make | GENIE (GNE) |
| Model | Z34/22 IC-4WD | S/N | Z34F-12743 |
| ID # | EQ0090637 | Description | BOOM, 34' R/T ARTICULATING - DIESEL |
| Purpose | Demo/ Rental | Date | 11/13/2023 08:49 AM |
| Hour Meter | | Equipment Office | |

| Linked Id |
|-------------|
| Linked ID's |

| General Option |
|--|
| Delivery / Pick-up <input type="radio"/> Delivery (Alta) <input type="radio"/> Delivery (3rd Party) <input type="radio"/> Delivery pick up |

| Meter # | Meter Type | Meter Sequence | Meter Replaced | Current Meter Reading | Last Meter Reading | Total Meter Reading |
|---------|------------|----------------|----------------|-----------------------|--------------------|---------------------|
| 1 | Hour | 1 | No | 821.6 | 0 | 821.60 |

| Additional attachments |
|------------------------|
| Additional Attachments |

| List of Damage |
|---|
| List of Damage or Shortage (Conveyor Belt, Frame, Hopper, Electrical Cord, Tires, Other) Left in good condition full of fuel |

| Customer Acceptance |
|--|
| I have been briefed on the operation of the equipment and have reviewed the condition of this piece of equipment and agree the above inspection report is accurate. I also understand the equipment damage is the responsibility of the customer. The carrier is responsible for all laws pertaining to transport of this equipment. |

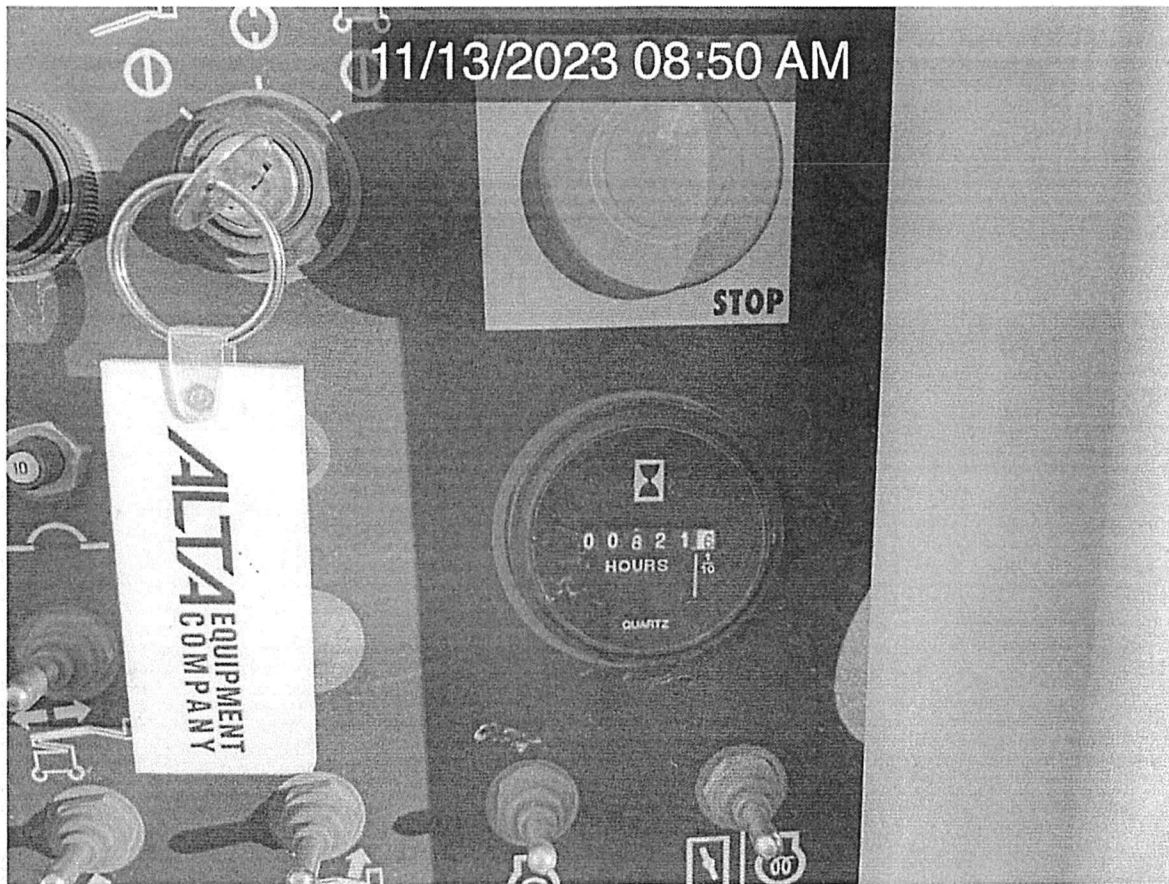
| Signed By | Driver | Customer | Yard |
|-------------|---------------------|---------------------|---------------------|
| Signature | X | X | Z |
| Name | x | x | |
| Date & Time | 11/13/2023 08:51 AM | 11/13/2023 08:51 AM | 11/13/2023 08:51 AM |





General Photo





General Photo



General Photo

Genie® Z[®]-34/22 IC

SKU: Standard Model

- Z34IC001A30002: Z-34/22 IC, 4WD
- Z34IC001A30003: Z-34/22 IC, Cold weather package, 4WD
- Z34IC001AD0001: Z-34/22 IC, 28 hp. GM .998L, Gas/LPG, Gauge package, 4WD

* Build to Order

| Option availability | | S | S+ | BT |
|---------------------|---|---|----|----|
| Power | 24 hp. 19.4 kW, Kubota D1105, Diesel, T4i/T4f, Stage IIIA/V, CN III | ✓ | | |
| | 28 hp. 21.6 kW, GM .998L, Gas/LPG | | | |
| | Cold weather package | | | |
| | Engine gauge package | | | |
| | LPG tank 33.5lb | | | |
| Platform | 3ft 10in/1.17m steel platform | | | |
| | 4ft 8in/1.42m steel platform | ✓ | | |
| | Air line to platform | | | |
| | Aircraft protection kit | | | |
| | Control box covers | | | |
| | Lift Guard Half Mesh panels with swing gate | | | |
| | Lift Guard Half Mesh panels with swing gate | | | |
| | Light Package: drive and work lights | | | |
| | Platform auxiliary top rail | | | |
| | Platform swing gate | | | |
| | 2.2kW AC Generator, 110V/60Hz | | | |
| | 2.2kW AC Generator, 220V/60Hz | | | |
| | 4ft/1.2m Jib | ✓ | | |
| | AC Power cord to platform | ✓ | | |
| | Drive enable system | ✓ | | |
| Chassis | None | ✓ | | |
| | Lift Guard Contact Alarm | ✓ | | |
| | Platform load sense system | ✓ | | |
| | Proportional controls | ✓ | | |
| | Self-leveling platform | ✓ | | |
| | Travel alarm package: flashing beacons, descent, travel and tilt alarms | ✓ | | |
| | Lift Connect Telematics | ✓ | | |
| | Lift Connect with Access Manager upgrade | | | |
| | Biodegradable hydraulic oil | | | |
| | Cold weather hydraulic oil | | | |
| | Fire resistant hydraulic oil | | | |
| | Industrial, foam-filled non-marking tires | | | |
| | Rough terrain, foam-filled tires | ✓ | | |
| | Hostile environment kit | | | |
| | 2 speed wheel motors | ✓ | | |
| | 2 wheel steering | ✓ | | |
| | Chassis tilt drive function cut-out | ✓ | | |
| | Dual parallelogram lift linkage | ✓ | | |
| | Hour meter | ✓ | | |
| | Hydrostatic drive system | ✓ | | |
| | Solid, non-marking tires | ✓ | | |

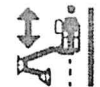
- S Standard
- S+ Standard +
- BT Build to Order
- ✓ Standard Features
- Options



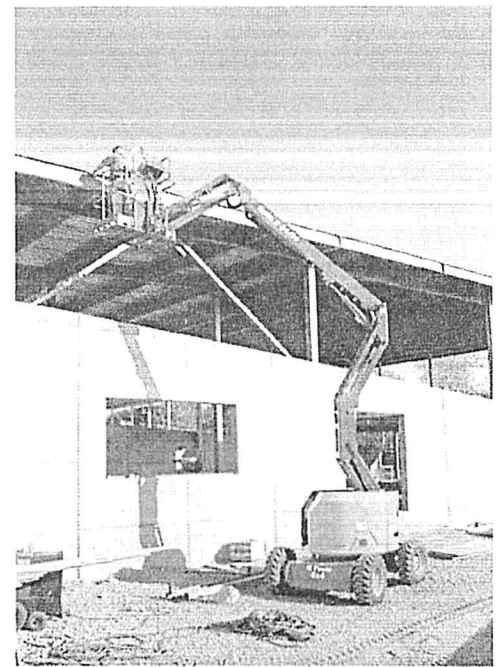
Zero Tailswing



4W Drive



Dual Parallel Linkage



Genie Genuine Accessories⁽¹⁾

- Lift Tools Productivity Tools
- Lift Connect Telematics
- Tech Pro Link Handheld Device

(1) More accessories available from Genie Genuine Parts.

Product specifications are subject to change without notice or indication. Photographs and/or drawings herein are for illustration purposes only. Refer to the appropriate Operators Manual for instructions on proper equipment use. Failure to follow instructions in the Operators Manual may result in serious injury or death. The only warranty applicable to our equipment is the standard written warranty applicable to the particular product and sale and we make no other warranty, express or implied. Products and services listed may be trademarks, service marks or trade names of Terex Corporation and/or their subsidiaries in the USA and many other countries. Terex, Genie, Quality by Design, Zing, GeniePro, Lift Power, Lift Guard, Lift Tech, Lift Connect and Tech Pro Link are registered trademarks of Terex Corporation or its subsidiaries.

6349

Genie®

© 2022 Terex Corporation

QUALITY BY DESIGN

Genie® Z⁽¹⁾-34/22 IC

Specifications

| Models | Z-34/22 IC | |
|------------------------------------|------------|---------|
| Measurements | US | Metric |
| Working height max. ⁽¹⁾ | 40 ft 7 in | 12.54 m |
| Platform height max. | 34 ft 7 in | 10.54 m |
| Horizontal reach max. | 22 ft 3 in | 6.78 m |
| Up and over clearance max. | 15 ft 1 in | 4.6 m |
| Ⓐ Platform length | 2 ft 6 in | 0.76 m |
| Ⓑ Platform width | 4 ft 8 in | 1.42 m |
| Ⓒ Height - stowed (tires) | 6 ft 9 in | 2.06 m |
| Ⓓ Length - stowed (tires) | 18 ft 7 in | 5.66 m |
| Ⓔ Storage height | 7 ft 6 in | 2.29 m |
| Ⓕ Storage length | 13 ft 6 in | 4.11 m |
| Ⓖ Width | 6 ft 1 in | 1.85 m |
| Ⓗ Wheelbase | 6 ft 2 in | 1.88 m |
| Ⓘ Ground clearance - center | 6.5 in | 0.17 m |

Productivity

| | | |
|---|-------------------------|--------------------|
| Lift capacity max. - unrestricted | 500 lb | 227 kg |
| Platform rotation | 180° | 180° |
| Jib length | 4 ft | 1.22 m |
| Vertical jib rotation | 139° | 139° |
| Turntable rotation | 355° | 355° |
| Turntable tailswing | 0 in | 0 cm |
| Drive speed - stowed ⁽²⁾ | 3.0 mph | 4.8 km/h |
| Drive speed - raised | 0.68 mph | 1.1 km/h |
| Gradeability - stowed ⁽²⁾ | 45 % | 45 % |
| Tilt sensor activation (front to back/side to side) | 2.5° - 4.5° / 4.5° | 2.5° - 4.5° / 4.5° |
| Turning radius - inside/outside | 5 ft 11 in / 13 ft 6 in | 1.80 m / 4.11 m |
| Tires (solid, non-marking) | 10×16.5 in | 25×42 cm |

Power

| | | |
|-------------------------|--------|--------|
| Power | Diesel | Diesel |
| Auxiliary power unit | 12V DC | 12V DC |
| Hydraulic tank capacity | 19 gal | 71.9 L |
| Fuel tank capacity | 9 gal | 34 L |

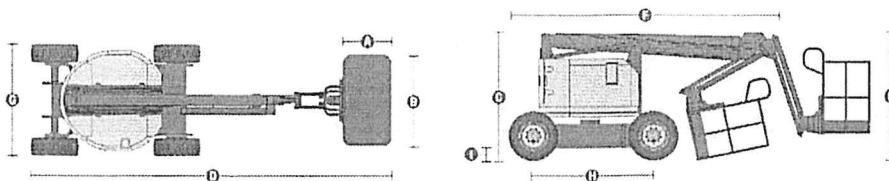
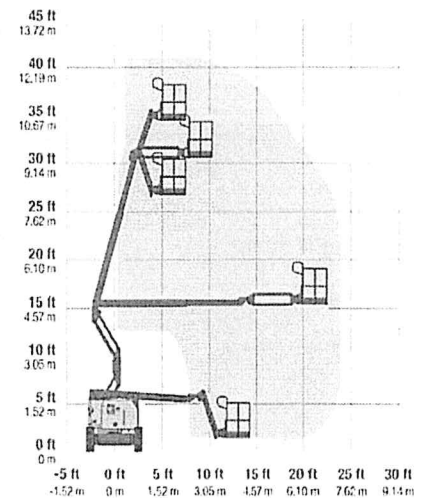
Weight⁽³⁾ and Floor Loading⁽⁴⁾

| | | |
|---------------------------------|-----------|-----------|
| Weight (tires) | 11,010 lb | 4,994 kg |
| Tire contact pressure | 45 psi | 310 kPa |
| Occupied floor pressure (tires) | 221 psf | 10.58 kPa |

Sound and Vibration Levels

| | | |
|---|--------------------------|----------------------|
| Sound Pressure level (ground workstation) | 81 dBA | 81 dBA |
| Sound Pressure level (platform workstation) | 80 dBA | 80 dBA |
| Vibrations | 8 ft 2 in/s ² | 2.5 m/s ² |

Range of motion Z-34/22 IC



(1) The metric equivalent of working height adds 2 m to platform height. The imperial equivalent adds 6 ft to platform height.

(2) Gradeability applies to driving on slopes and may vary depending on options and machine configurations. See operator's manual for details regarding slope ratings.

(3) Weight refers to standard configuration and may vary depending on options and/or country standards.

(4) Floor loading information is approximate and may vary depending on options and machine configurations. It should be used only with adequate safety factors.

Quality used equipment for sale

2014 GENIE Z-34/22 IC - PRICE \$34,585 (USD)

Description: BOOM 30-39' ARTICULATING IC 4WD
Make/Model: GENIE Z-34/22 IC
Year: 2014
Serial #: Z3414-9880
Meter: 1724.8
Equipment #: 10228239
Location: G47 - UTICA, MI

UNITED RENTALS (Store G47)
12000 23 MILE ROAD
UTICA, MI 48315
Mon-Fri: 7:00AM-5:00PM Sat: CLOSED Sun: CLOSED

Sales Contact:
Jason Schell
586-431-9464
jschell@ur.com



Valid through 03/10/2024
UnitedRentals.com | 800.UR.RENTS

© 2024 United Rentals, Inc.
For terms and conditions, visit unitedrentals.com/customer-care/renting-equipment

2014 GENIE Z-34/22 IC
Price: \$34,585 (USD)
UTICA, MI
586-431-9464



Valid through 03/10/2024
UnitedRentals.com | 800.UR.RENTS

© 2021 United Rentals, Inc.

Excludes taxes, title, and license. Rent subject to credit review. Equipment subject to availability. See website for restrictions.

2014 GENIE Z-34/22 IC
Price: \$34,585 (USD)
UTICA, MI
586-431-9464



Valid through 03/10/2024
UnitedRentals.com | 800.UR.RENTS

© 2021 United Rentals, Inc.

Prices & availability subject to change without notice. Some restrictions may apply. See website for details.

340AJ

ARTICULATING BOOM LIFT

JLG
reaching out.

Performance

| | | |
|------------------------------|----------------------------|------------------------|
| Platform Height | 33 ft 10.5 in. | 10.33 m |
| Horizontal Outreach | 19 ft 11 in. | 6.06 m |
| Up and Over Height | 17 ft | 5.17 m |
| Swing | 355 Degrees Non-Continuous | |
| Platform Capacity | 500 lb | 227 kg |
| Platform Size | 30 x 60 in. | 0.76 x 1.52 m |
| Platform Rotator | 180 Degrees Hydraulic | |
| Jib | 4 ft | 1.22 m |
| Range of Articulation | 144 Degrees (+84, -60) | |
| Weight | 9,700 lb | 4,400 kg |
| Max. Ground Bearing Pressure | 64 psi | 4.5 kg/cm ² |
| Drive Speed | | |
| 4WD | 31 mph | 4.98 km/hr |
| Tilt Cut Out | 3 Degrees | |
| Gradeability | | |
| 4WD | 45% | |
| Turning Radius | | |
| Inside | 5 ft | 1.52 m |
| Outside | 13 ft | 3.96 m |

Standard Specifications

Engine

| | | |
|--------------------|---------|---------|
| Make and Model | | |
| Dual Fuel Engine | | |
| PSI/GM | 28.7 hp | 21.4 kW |
| Diesel Engine | | |
| Kubota D1105 | 24.8 hp | 18.5 kW |
| Fuel Tank Capacity | 13 gal. | 49.21 L |

Tires

| | |
|----------|---------------------------------|
| Standard | 265/50D20 Foam Filled Lug Tread |
|----------|---------------------------------|

Hydraulic System

| | | |
|-----------------|-----------|--------|
| Capacity | 70.6 gal. | 77.9 L |
| Auxiliary Power | 12V DC | |



Standard Features

- 4 ft (1.22 m) Articulating Jib
- 355 Degree Non-Continuous Swing
- Platform 30 x 60 in. (0.76 x 1.22 m) Side Entry
- 180 Degree Hydraulic Platform Rotator
- Platform Console Machine Status Light Panel*
- 110V-AC Receptacle in Platform
- 3 Degree Tilt Alarm/Indicator Light
- Swing-Out Engine Tray
- Gull-Wing Steel Turntable Hoods
- 12V-DC Auxiliary Power
- Hourmeter
- Hydrostatic Drive
- Proportional Controls
- Control ADE® System
- Lifting/Tie Down Lugs
- Horn
- Oscillating Axle
- Cast Aluminum Control Box
- All Motion Alarm
- Glow Plugs (Diesel Engines)
- Load Sensing System
- SkyGuard SkyLine™

*Provides indicator lights at platform control console for system distress, low fuel, 5 degree tilt light, and foot switch status.

Accessories & Options

- 30 x 48 in. (0.76 x 1.22 m) Platform
- Self-Closing Gate
- 1/2 in. Air Line to Platform
- AC Generator
- 43.5 lb (19.7 kg) Propane Tank
- Cold Weather Start Kit¹
- Hostile Environment Kit²
- Flashing Amber Beacon
- Arctic Package³ (diesel only)
- Special Hydraulic Oils
- Light Package⁴

1. Includes engine block heater, battery heater, oil tank heater.

2. Includes console cover, boom wipers and cylinder bellows.

3. Includes arctic hydraulic hoses (drive and steer only) and main boom cable, arctic hydraulic oil, extreme cold engine oil, anti-freeze (Cat only), fuel conditioner, engine block heater, battery blanket, glow plugs, hydraulic tank heater, and oversized foot switch.

4. Includes platform work lights, head and tail lights, amber beacon.

Additional accessories and options available via JLG Aftermarket.

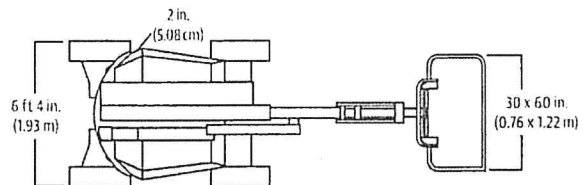
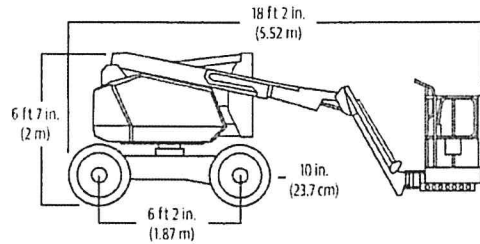
340AJ

ARTICULATING BOOM LIFTS

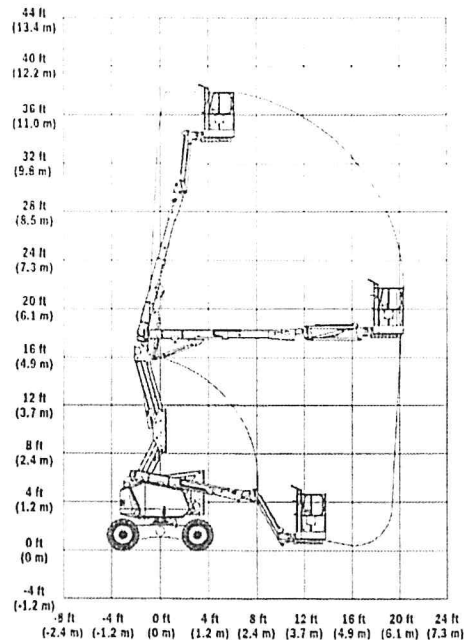


Dimensions

All dimensions are approximate



Reach Diagram



The JLG "1 & 5" Warranty

We provide coverage for one (1) full year, and cover all specified major structural components for five (5) years. Due to continuous product improvements, we reserve the right to make specification and/or equipment changes without prior notification. This machine meets or exceeds applicable ANSI and CSA requirements based on machine configuration as originally manufactured for intended applications. Please reference the serial number plate on the machine for additional information.

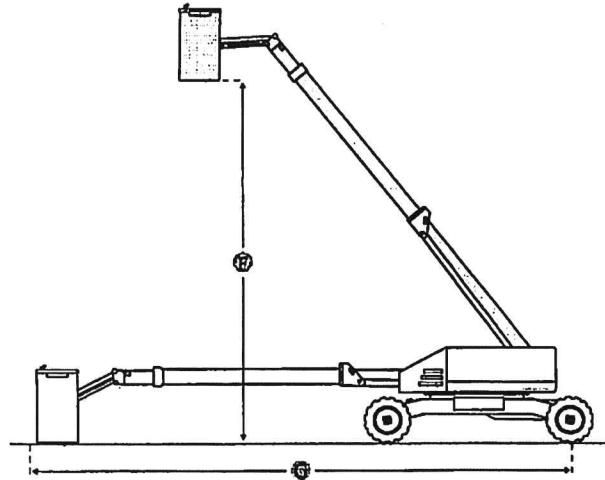
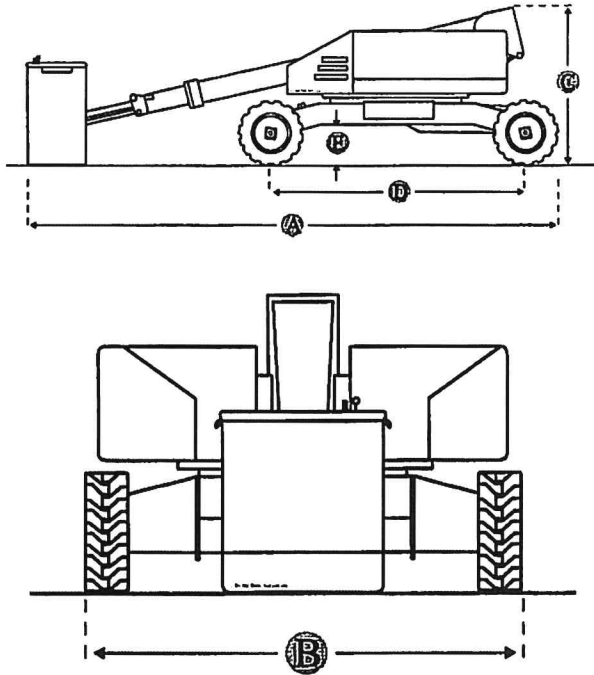
Part No.: 3131121
R1219_A92.20
Printed in USA

JLG Industries, Inc.
1 JLG Drive
McConnellsburg, PA 17233-9533
Telephone 717-485-5161
Toll-free in US 877-JLG-LIII
Fax 717-485-6417
www.jlg.com

An Oshkosh Corporation Company

Home [Boom Lift](#) [JLG](#) [340AJ](#)

JLG 340AJ Boom Lift



Units ☒ Imperial ☐ Metric

Dimensions

Dimensions

| | |
|---------------------------------|-------------|
| A Overall Length | 18.2 ft in |
| B Overall Width | 6.4 ft in |
| C Overall Height - Mast Lowered | 6.7 ft in |
| E Ground Clearance | 10 in |
| Articulation Angle | 144 degrees |
| Horizontal Outreach | 19.11 ft in |
| Turning Radius | 5 ft in |
| Up And Over Height | 17 ft in |

Platform Dimension A

2.6 ft in

Platform Dimension B

5 ft in

Tailswing Radius

0.2 ft in

Platform

Platform Capacity - Unrestricted

500 lb

Platform Railing Height

33.1 ft in

Specifications

Swing System

Swing

355 degrees

Swing Type

Non-Continuous

Engine

Diesel Engine Type

Kubota D1105 24.8 hp

Diesel Engine Power

24.8 hp

Dual Fuel Engine Type

PSI/GM

Maximum Ground Bearing Pressure

151 psi

Dual Fuel Engine Power

28.7 hp

System Voltage

12 V

Operational

Operating Weight

9700 lb

Fuel Capacity

13 gal

Hydraulic System Fluid Capacity

20.6 gal

Tire Size

265/50020 Lug Tread

Performance

Axle Oscillation

0.5 ft in

Drive Speed

3.2 mph

Gradeability

45 %

🔄 Reply all | ▾ 🗑 Delete Junk | ▾ ...



Aerial Titans - 2015 JLG 340AJ (Kubota DSL/4WD/FFT/JIB) #277



Louis Nino <lnino@aerialtitans.com>

Yesterday, 12:24 PM

Benjamin Woodfield ✉

🔄 Reply all | ▾

Inbox



✉ Show all 16 attachments (12 MB) Download all

Louis Nino

Sales Department | Aerial Titans

P: 470-450-0175 | O: 866-874-0584

www.aerialtitans.com

[Wholesale List](#)

AERIAL TITANS

MACHINERY QUOTE

www.aerialtitans.com

866-874-0584

2015 JLG 340AJ

34' Platform Height / 40' Work Height / 20' Horizontal Reach

1679 HOURS

Kubota Diesel Engine, 4WD, Foam Filled Tires, JIB

\$29,850 FOB Philadelphia, PA

For more details on this machine your sales representative's contact information is listed below.
Please, feel free to browse additional machines by visiting us online at www.aerialtitans.com

Reply all | ▾ Delete Junk | ▾ ...



Aerial Titans - 2015 JLG 340AJ (GM DF/4WD/FFT/JIB) #948



Louis Nino <lnino@aerialtitans.com>

Yesterday, 12:20 PM

Benjamin Woodfield ▾

Reply all | ▾

Inbox



▾ Show all 18 attachments (1 MB) Download all

Louis Nino

Sales Department | Aerial Titans

P: 470-450-0175 | O: 866-874-0584

www.aerialtitans.com

Wholesale List



2015 JLG 340AJ

34' Platform Height / 40' Work Height / 20' Horizontal Reach

1919 HOURS

GM Dual Fuel Engine (Gas or Propane), 4WD, Foam Filled Tires, JIB

\$29,950 FOB Detroit, MI

For more details on this machine your sales representative's contact information is listed below.
Please, feel free to browse additional machines by visiting us online at www.aerialtitans.com