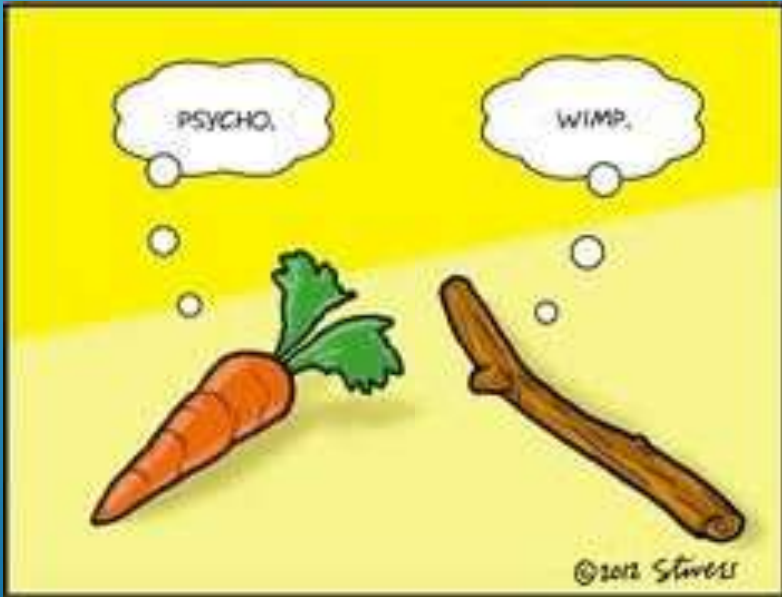


# LANCASTER TOWNSHIP *RE-TELLING OUR HISTORY*

Northeast Lancaster Township Historic District

March 13, 2023

# What is an Historic District?



- An area with defined boundaries that's been determined to be significant in our nation's history.
- Three kinds: This one is included in the National Register of Historic Places.
- The National Register listing does not place obligations or restrictions on the use or disposition of property.



*Commonwealth of Pennsylvania*  
*Pennsylvania Historical & Museum Commission*

NORTHEAST LANCASTER TOWNSHIP HISTORIC DISTRICT

LANCASTER COUNTY

has been entered in the

*National Register of Historic Places*

under provisions of the National Historic Preservation Act of 1966

The National Register of Historic Places, kept by the United States Department of Interior, is the official list of the Nation's cultural resources worthy of preservation and includes properties significant in American History, Architecture, Archeology, Engineering and Culture. These resources contribute to an understanding of the historical and cultural foundations of the Nation.

  
State Historic Preservation Officer

  
Director, Bureau for Historic Preservation

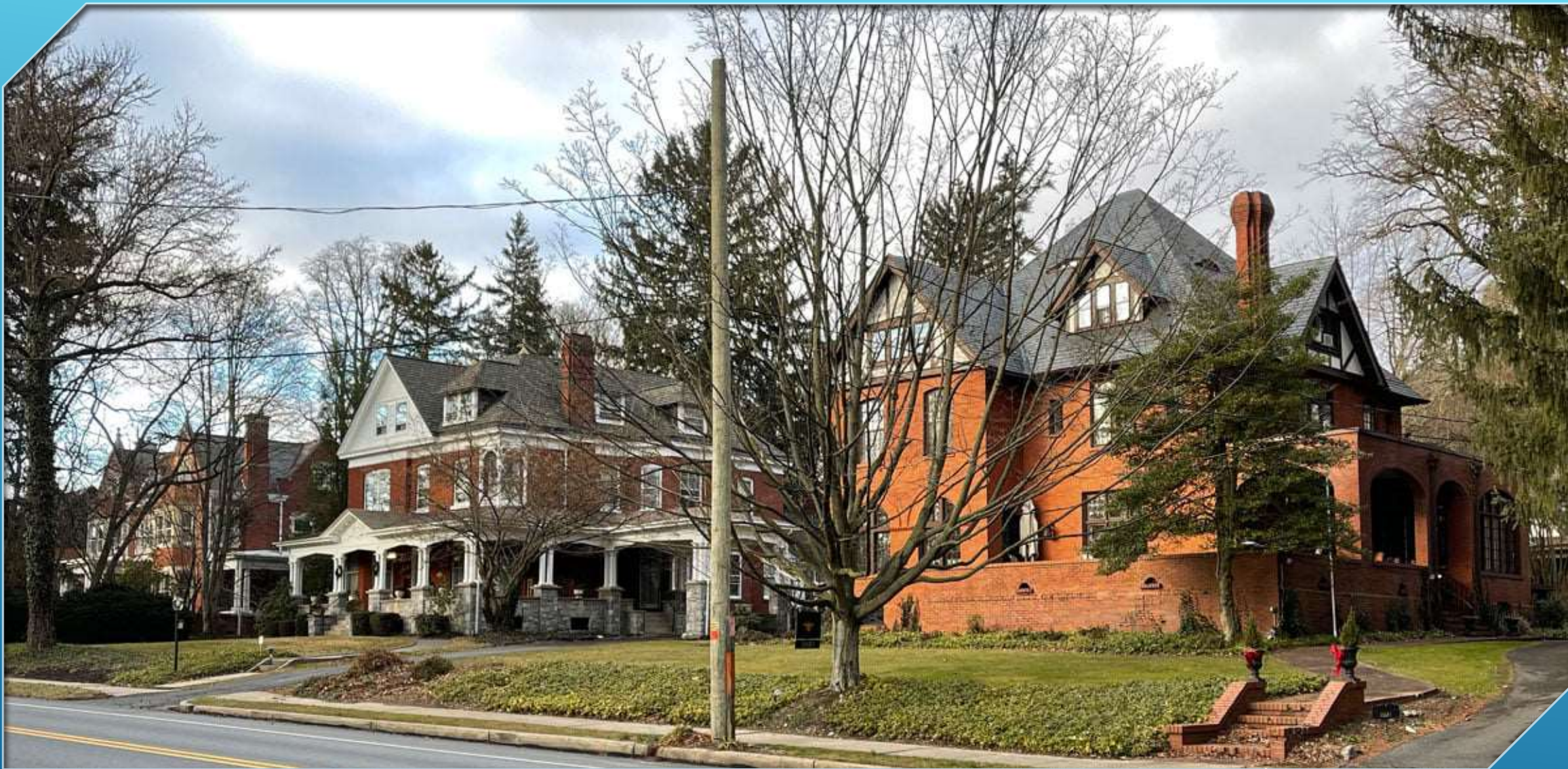
March 20, 1986

Date entered

Prepared and  
submitted by the  
Historic Preservation  
Trust

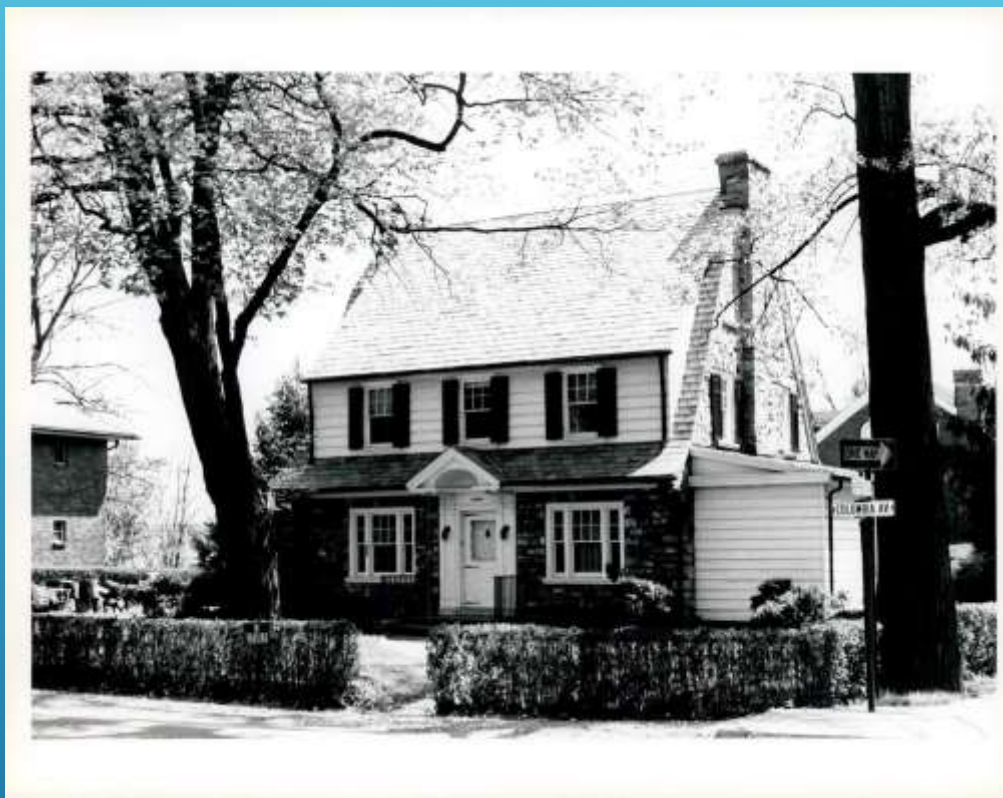
Lancaster Township wasn't involved, perhaps not even informed,  
until it was approved in 1986.



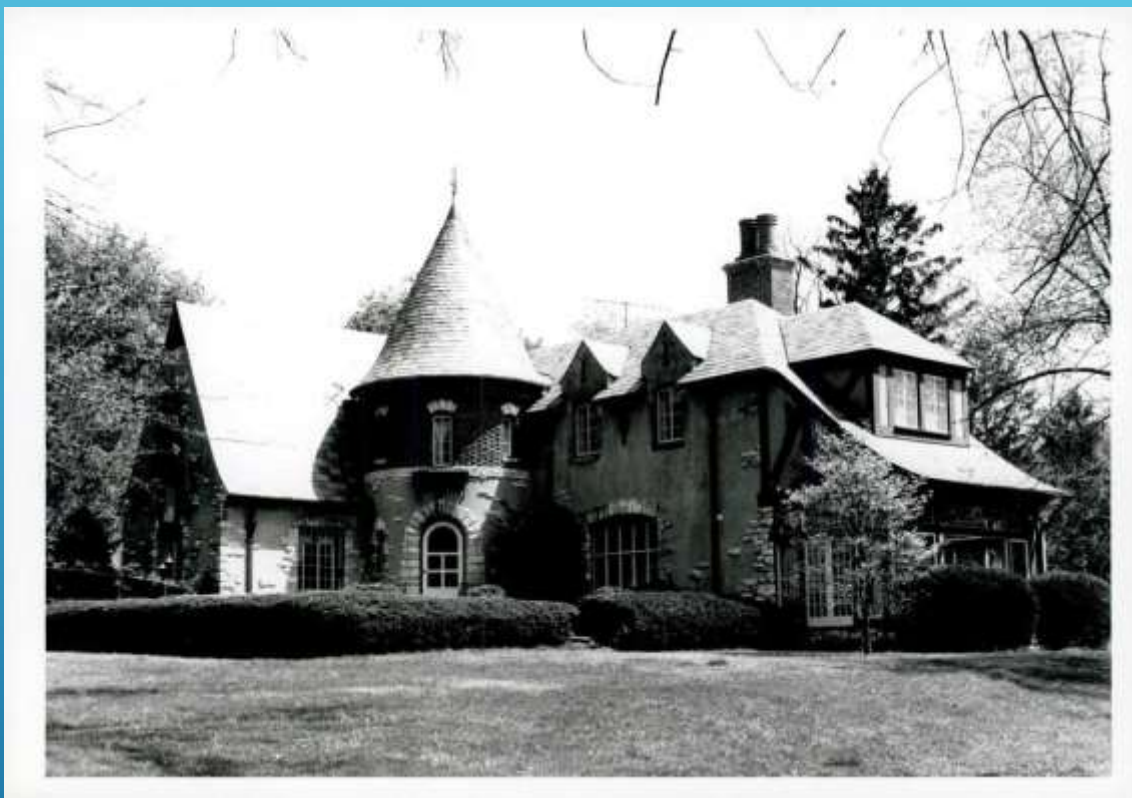


*Marietta Avenue*



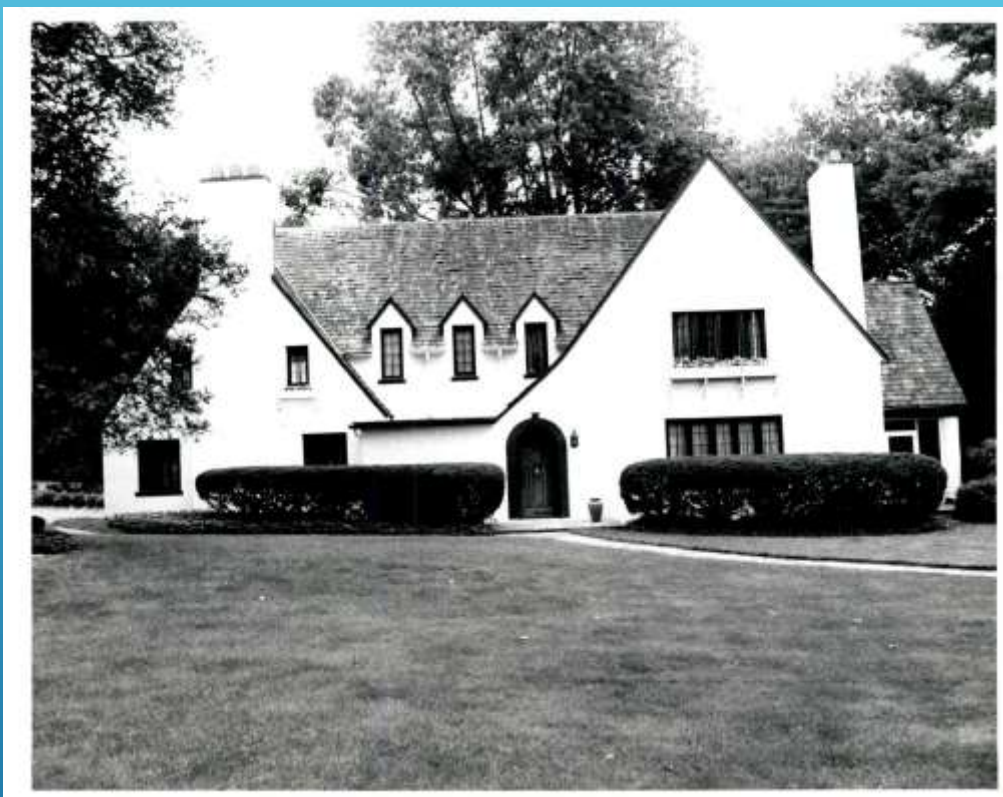


*Columbia Avenue*

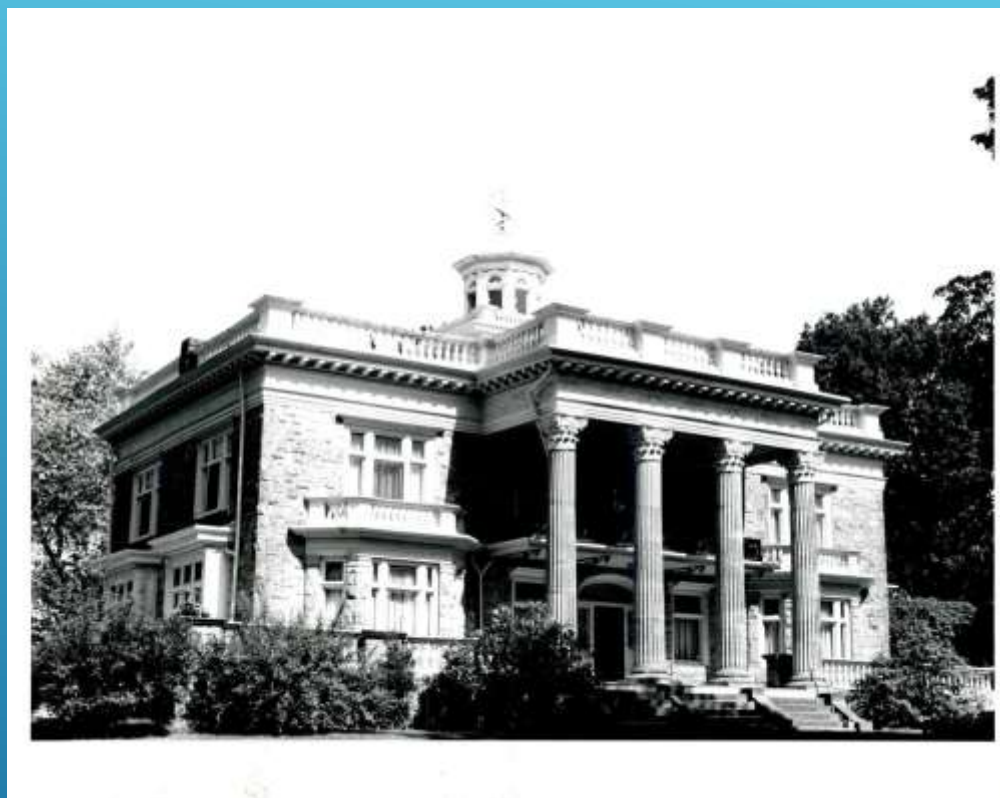


*Hamilton Road*



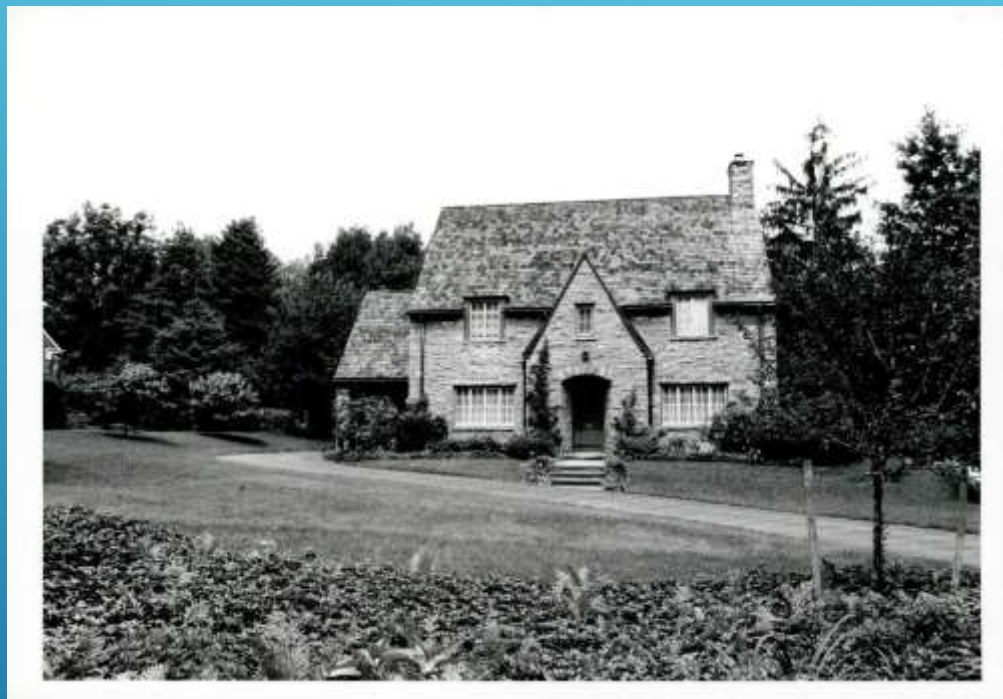


*Hamilton Road*



*North School Lane*





*North School Lane*

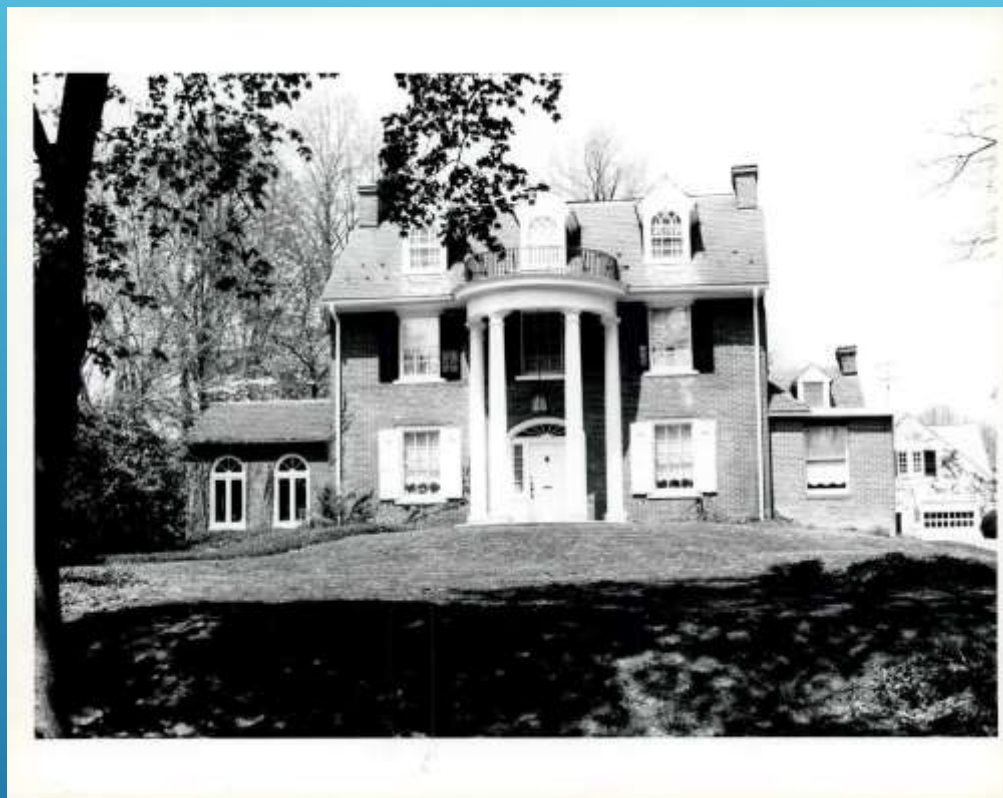


*North School Lane*





*Race Avenue*



*Wheatland Avenue*





*Woods Avenue*



Map of the Historic District submitted in 1985





Updated the map  
in 2019 to clarify  
boundaries and  
update property  
lines.



