

LANCASTER TOWNSHIP *RE-TELLING OUR HISTORY*

Herr's Ice Company

December 12, 2022



Looking southeast, towards Columbia Avenue.



Looking northwest, away from Columbia Avenue.



Also looking northwest, away from Columbia Avenue.



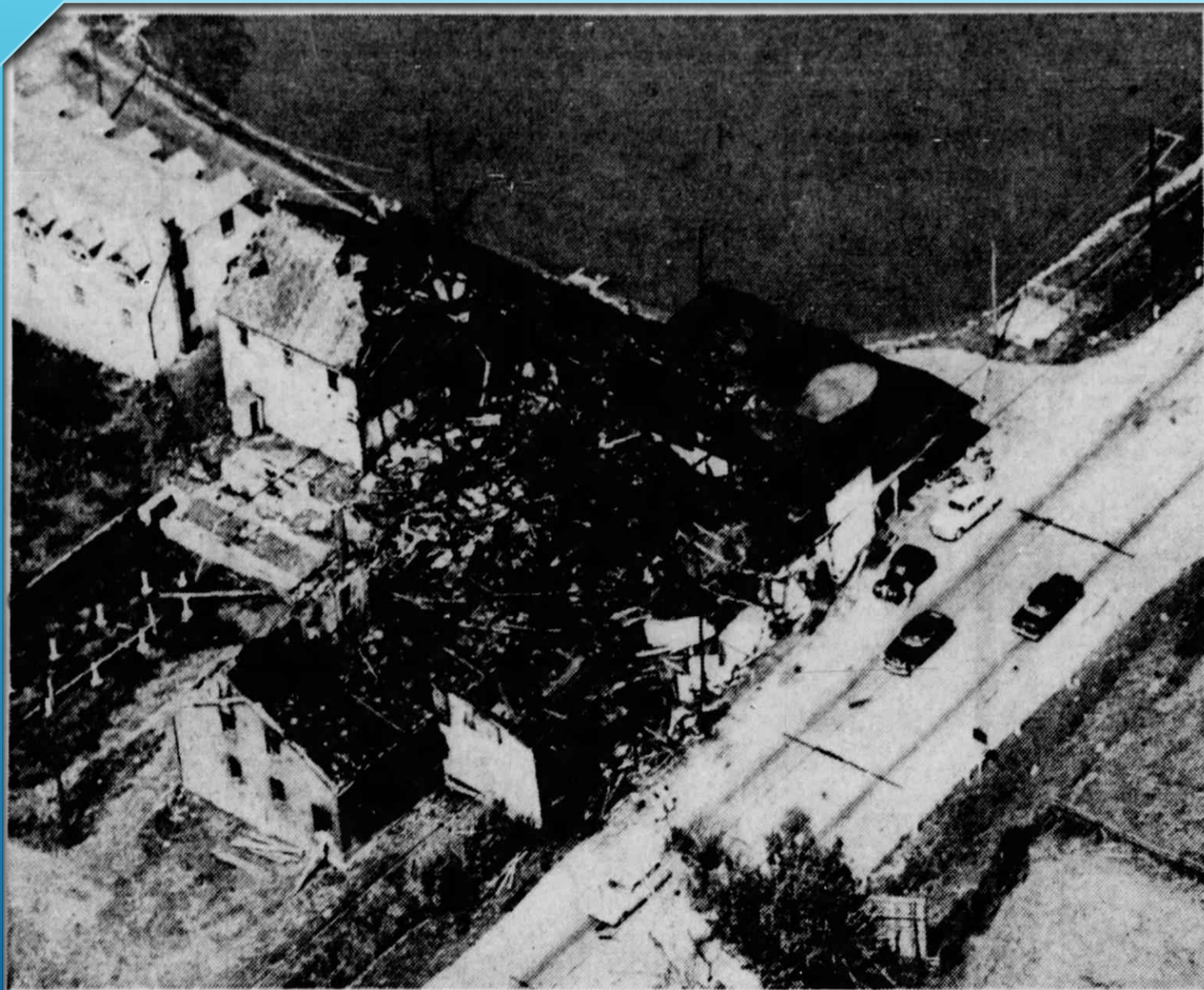
1875



1950



Ice was harvested from the ponds at first. Artificial ice production began in 1890.



Ice was harvested from the ponds at first. Artificial ice production began in 1890.

Business sold in 1952.

The plant was destroyed by fire in July of 1954.

An aerial view of the ruins of the Herr ice plant. In the foreground is the Columbia pike and in the

New Era Aerial Photo by Henry Hartzler
background the pond, long a landmark in the West End.



Those ponds were good for more than just ice harvesting.

10¢ to skate with hot dogs and candy for sale, as well...





As the largest purveyor of ice in Lancaster, distribution was critical. So, they used electric trucks.

This battery-powered electric truck was built by the General Vehicle Company about 1910. It was used in Lancaster until 1948. This truck was slow and limited in its range but it could haul heavy loads. Its batteries had to be recharged every night.



Less
than a
century
ago...

