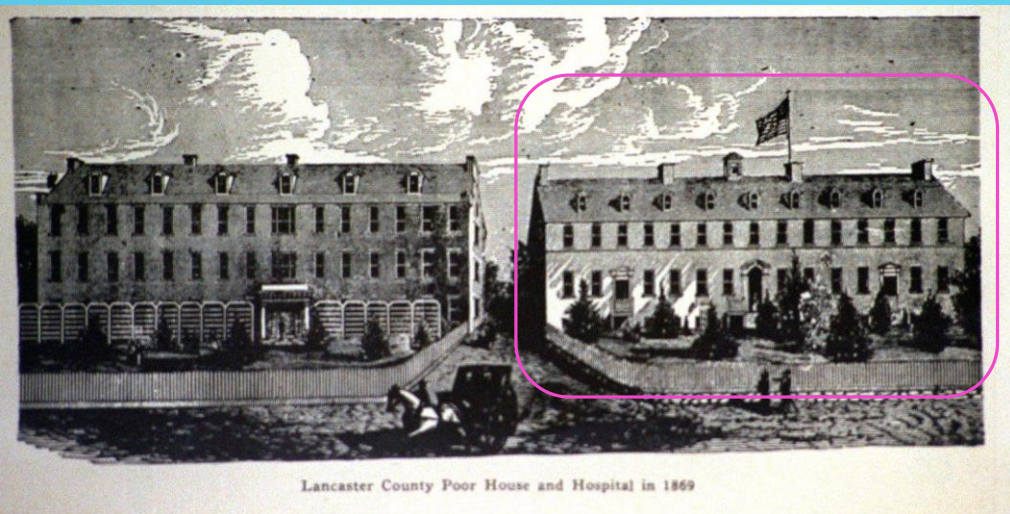


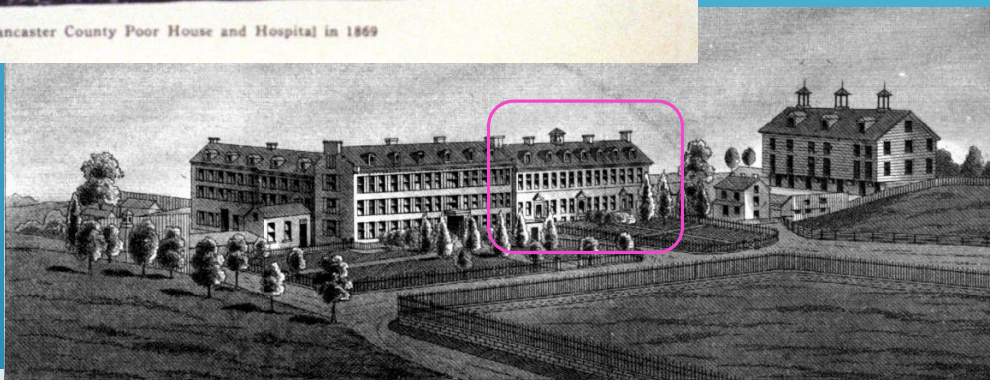
LANCASTER TOWNSHIP *RE-TELLING OUR HISTORY*

The Almshouse, County Hospital, and Asylum

July 13, 2020



Lancaster County Poor House and Hospital in 1869

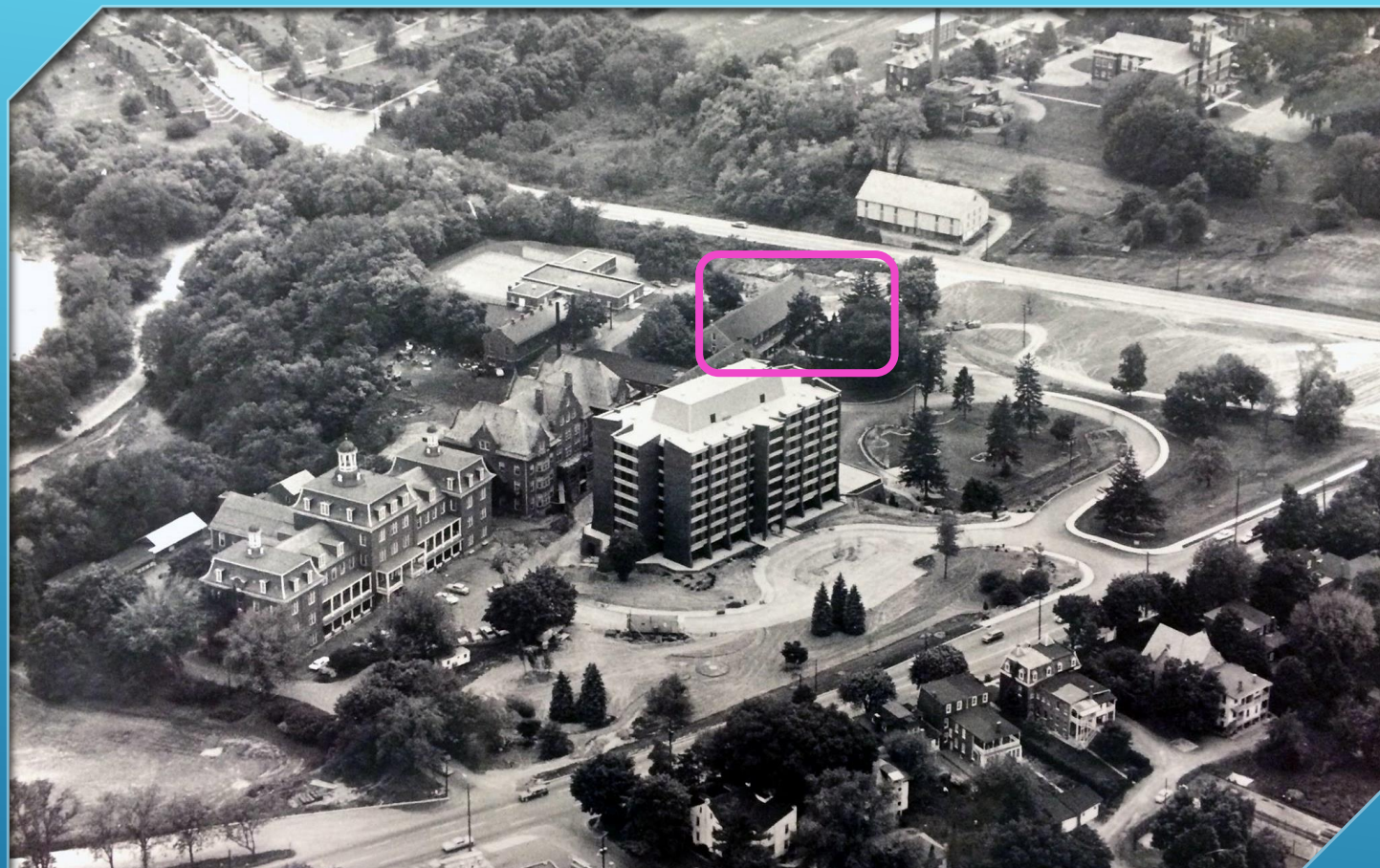


LANCASTER COUNTY ALMSHOUSE—HOSPITAL AND INSANE ASYLUM BUILDINGS.



BUILT IN 1800, IT HAS SERVED MANY FUNCTIONS

- “House of Employment and Support of the Poor” until 1876
- Medical hospital
- Orphanage
- Insane asylum
- Nurses home
- Offices for Lancaster County Children and Youth Agency, beginning in 1956



KNOWN TODAY AS CONESTOGA VIEW
(CIRCA 1969)

CONTEXT WITH OTHER EXISTING AND PHANTOM FEATURES



Seen here in an aerial image from the 1930s (prior to South Broad Street), the vicinity is highly agrarian outside of the City limits.

Trolley tracks are visible crossing over the Conestoga and heading for Rocky Springs Amusement Park.

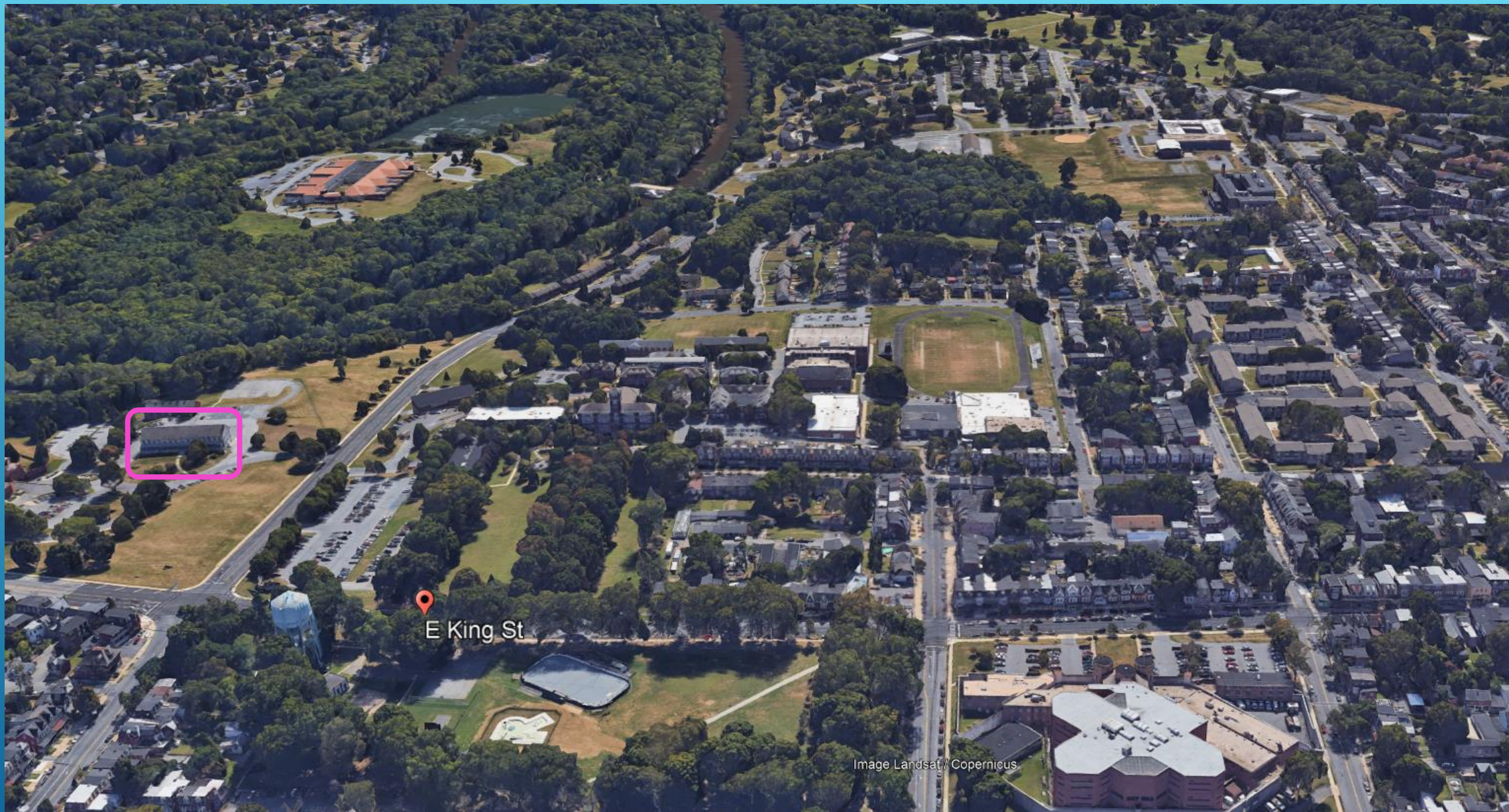
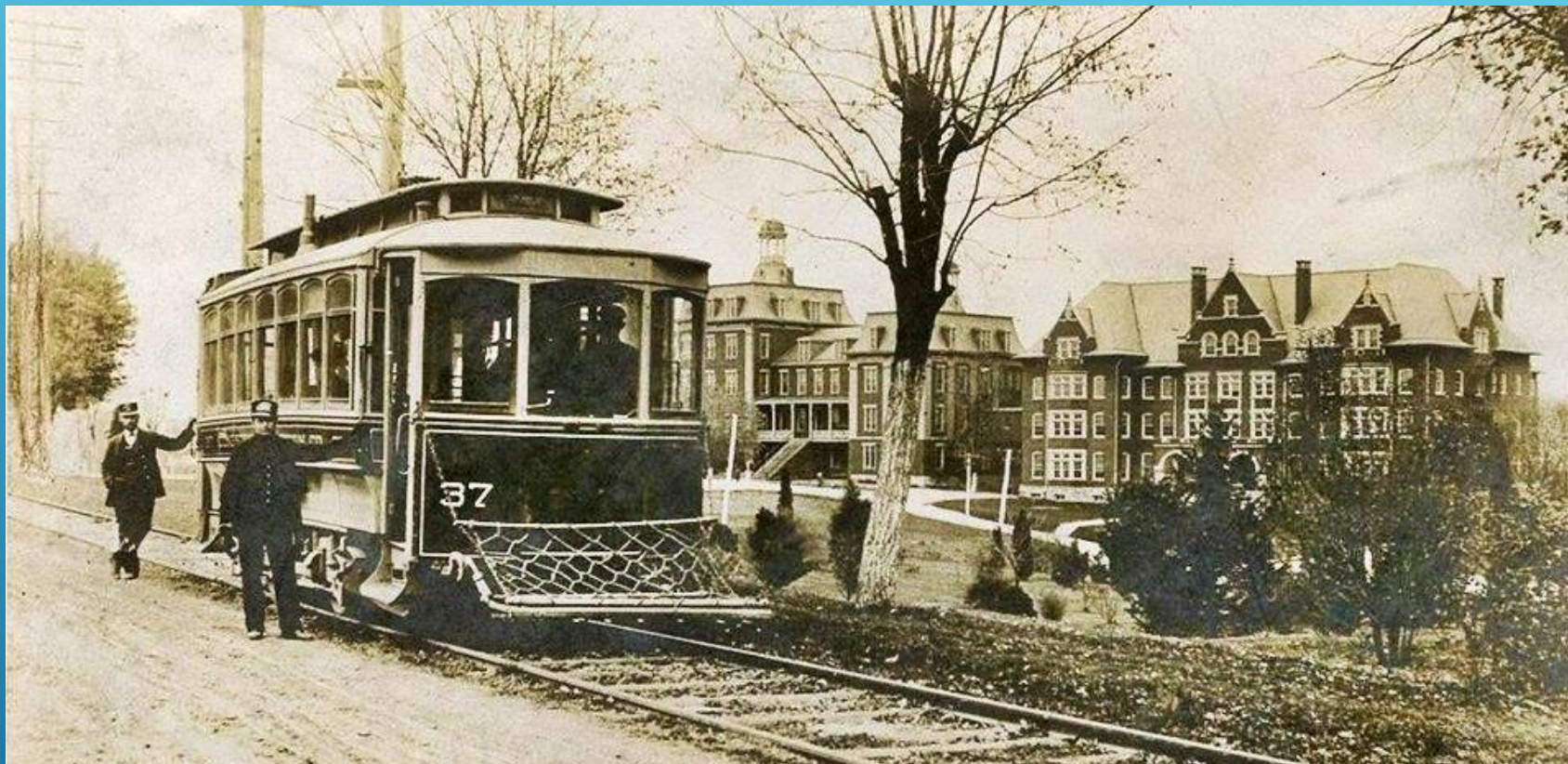


Image Landsat / Copernicus

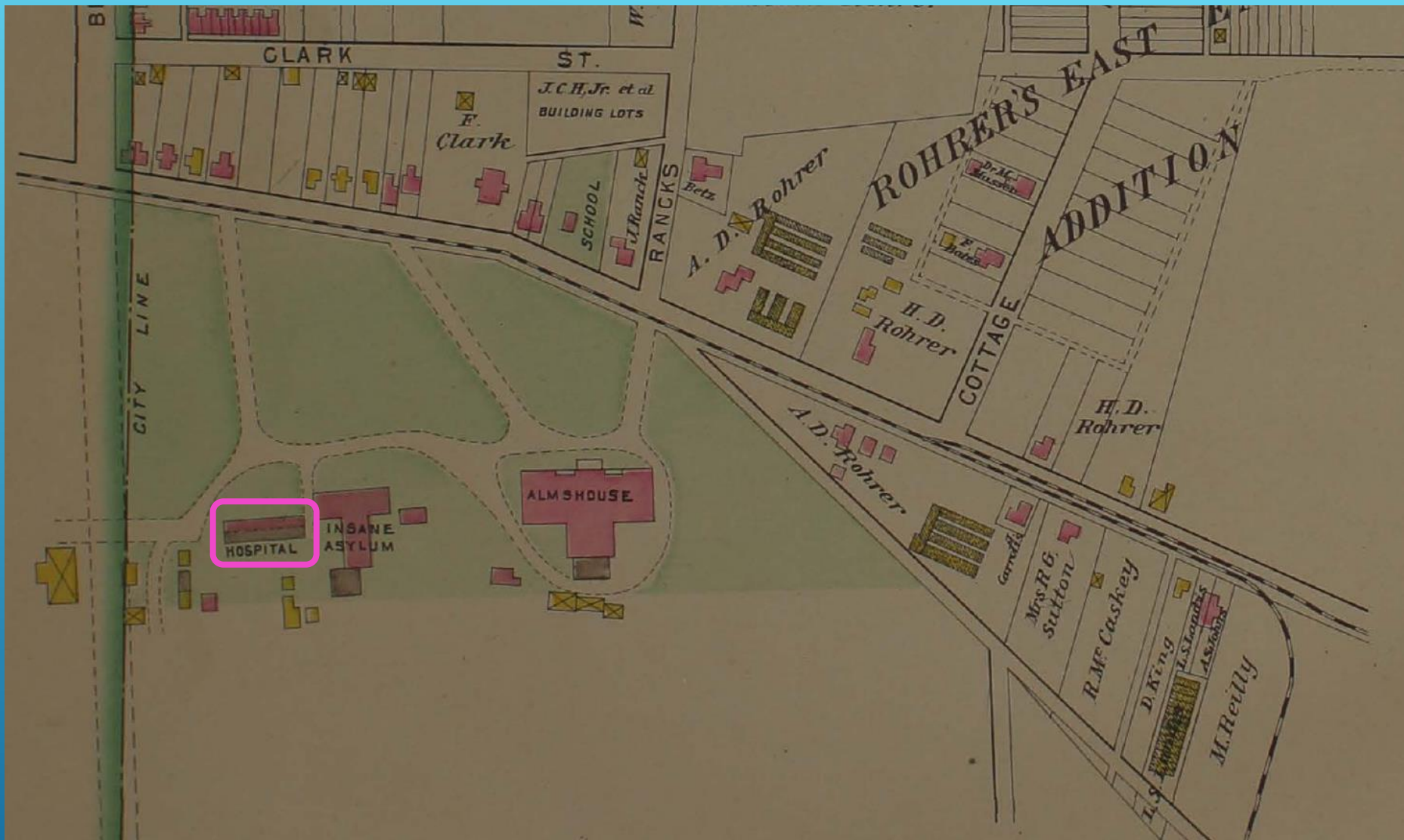


TROLLEYS RAN
ALONG KING
STREET



WORK FORCE HARVESTING POTATOES

(CURRENT LOCATION OF THADDEUS STEVENS COLLEGE)



MAP FROM 1899

POOR
HOUSE
BRIDGE
TO
SUNNYSIDE
PENINSULA



- One of the oldest hospital type structure now surviving in the nation
- Has served multiple community purposes since its inception
- Registered as a National Historic Landmark
- Protected under an easement with the Lancaster Historic Preservation Trust

HISTORICALLY SIGNIFICANT STRUCTURE

GOOGLE EARTH AERIAL (2018)

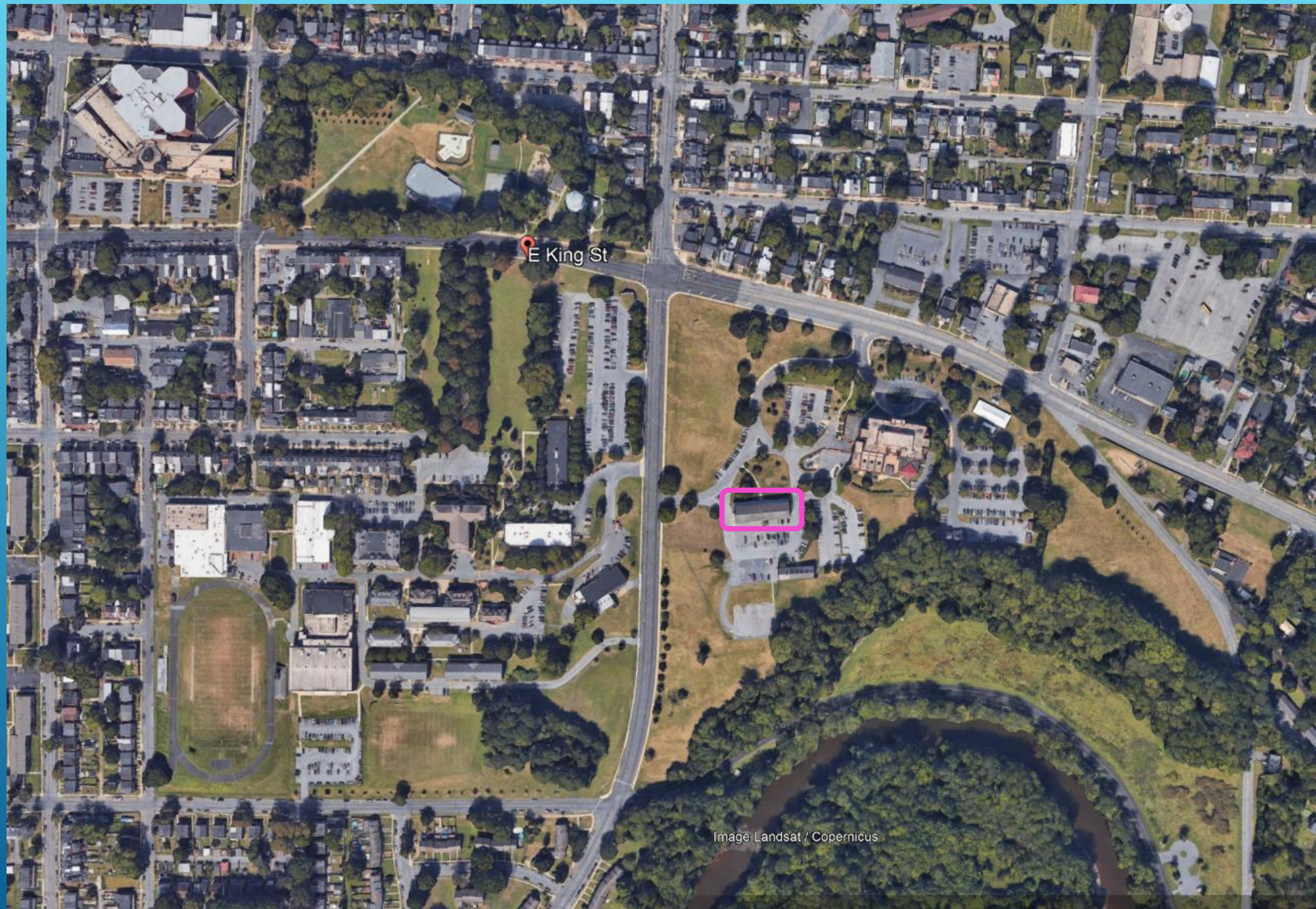


Image Landsat / Copernicus