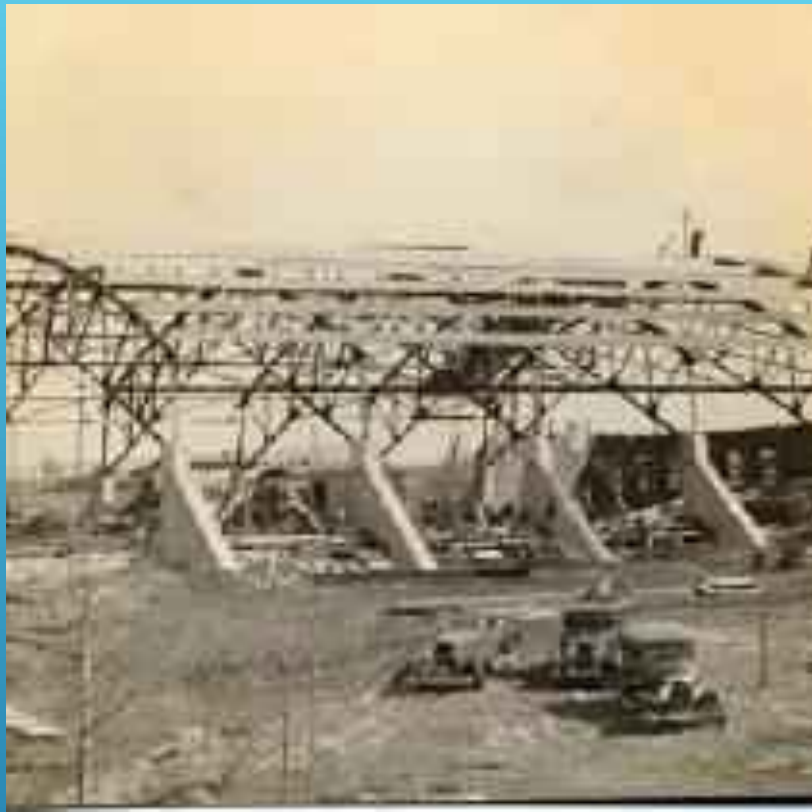




A DANCE PAVILION

(CURRENT LOCATION OF
STORMWATER BASIN
BEHIND STONE MILL
PLAZA)



THE ARENA

(CURRENT LOCATION OF
THE CASTLE ROLLER RINK)

SKY ROCKET, MAPLE GROVE PARK, LANCASTER, PA.



THE ROLLER COASTER

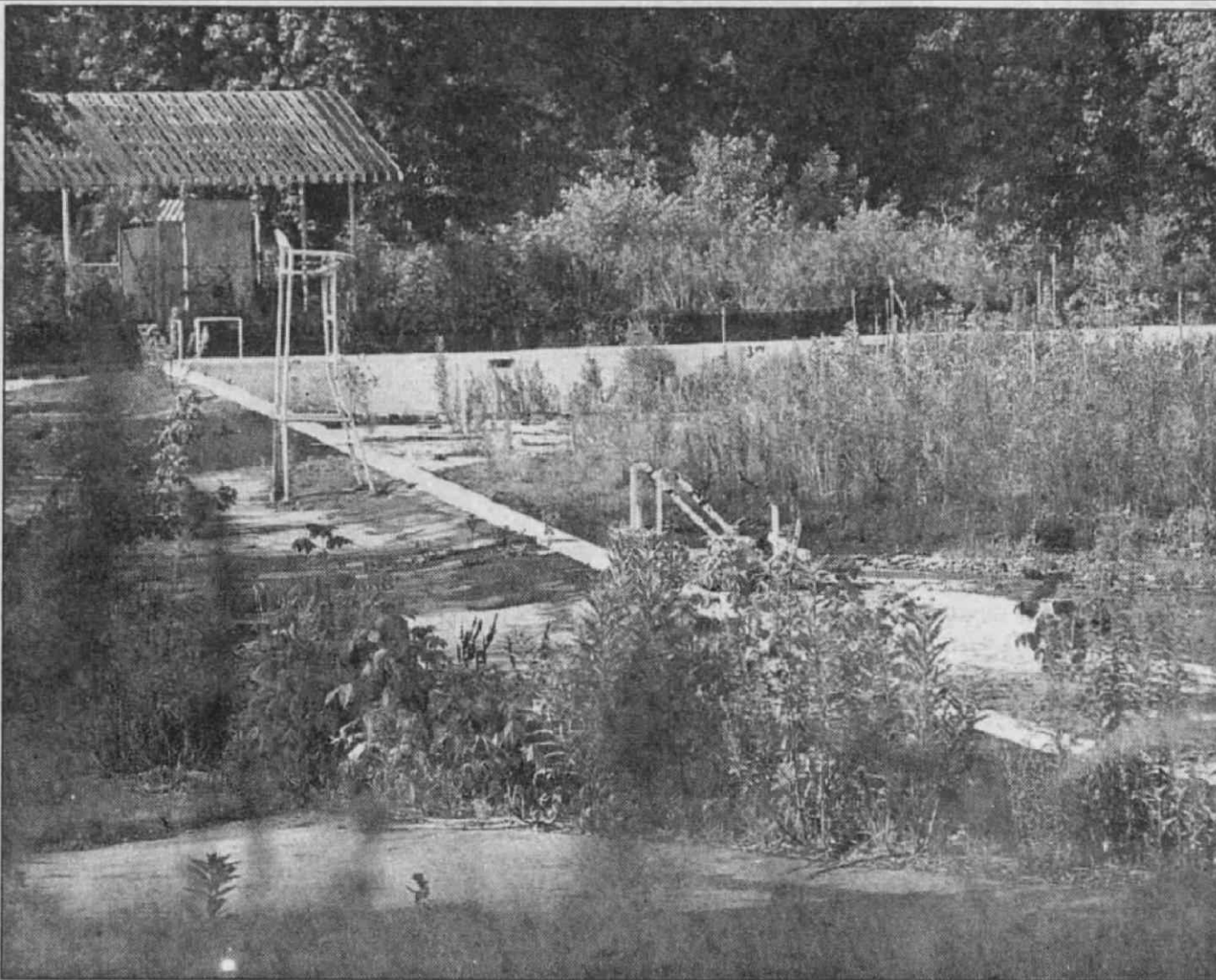
(POSTCARD FROM 1925)

ENTROPY

- World War II & cars
- Flooding
- Maintenance
- New diversions
- New owners



These are the new owners of the Mapping pool, the Christ Hampilos family, reopen the pool on Memorial Day. In back



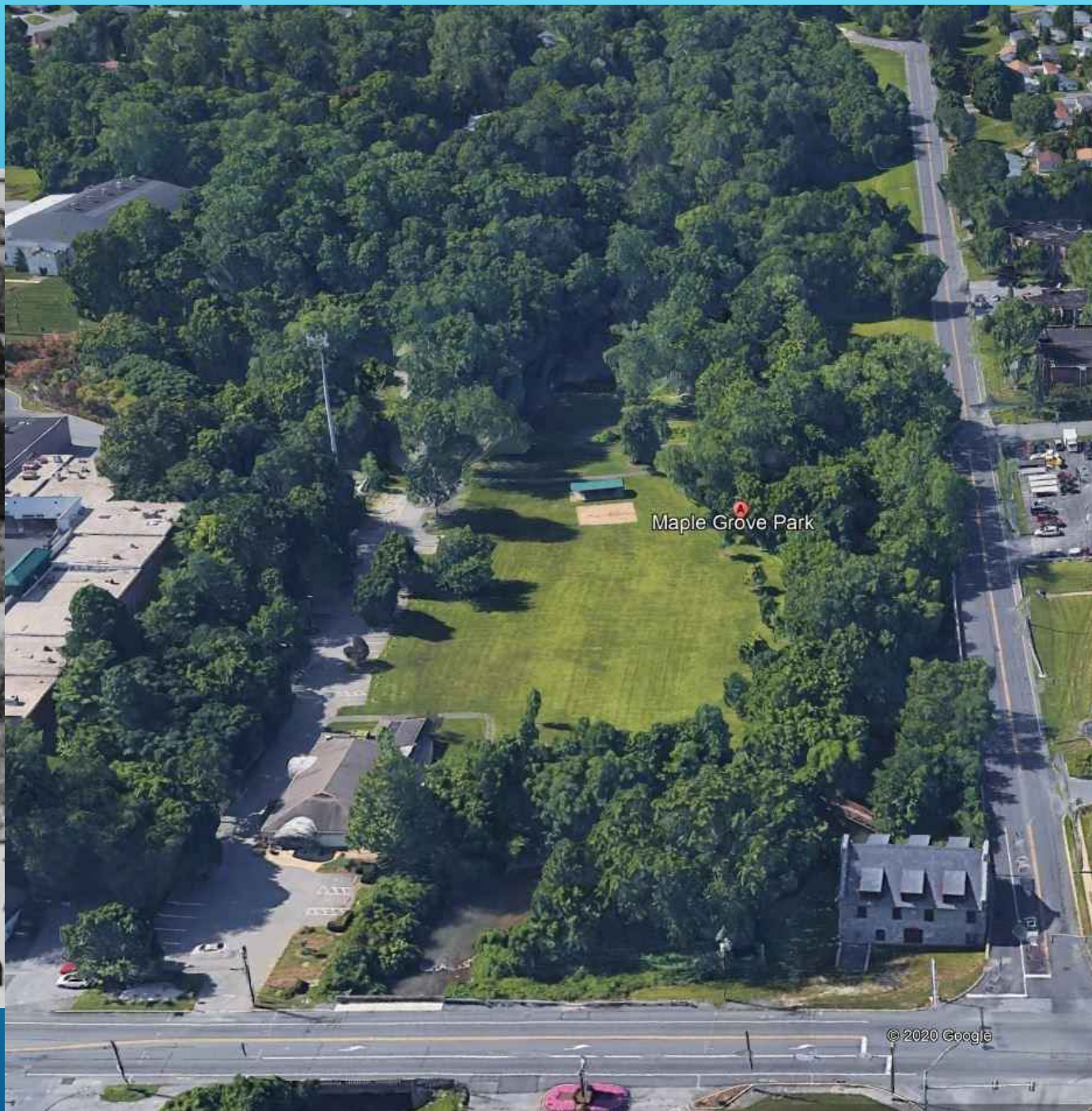
New Era Photo by Richard Hertzler

BY 1992, THE AREA WAS MORE OF A NUISANCE MAGNET THAN A RECREATION SPOT.



Lancaster
sors Mark

Lanca



- Public Works campus and parkland near Schoolhouse Road
- Removal of mill's low head dam
- Filling-in of pool
- Renovation of Hampilos bathhouse
- Development of park facilities
- Conversion of quarry into Woody Waste facility
- Riparian buffer along the Little Conestoga Creek