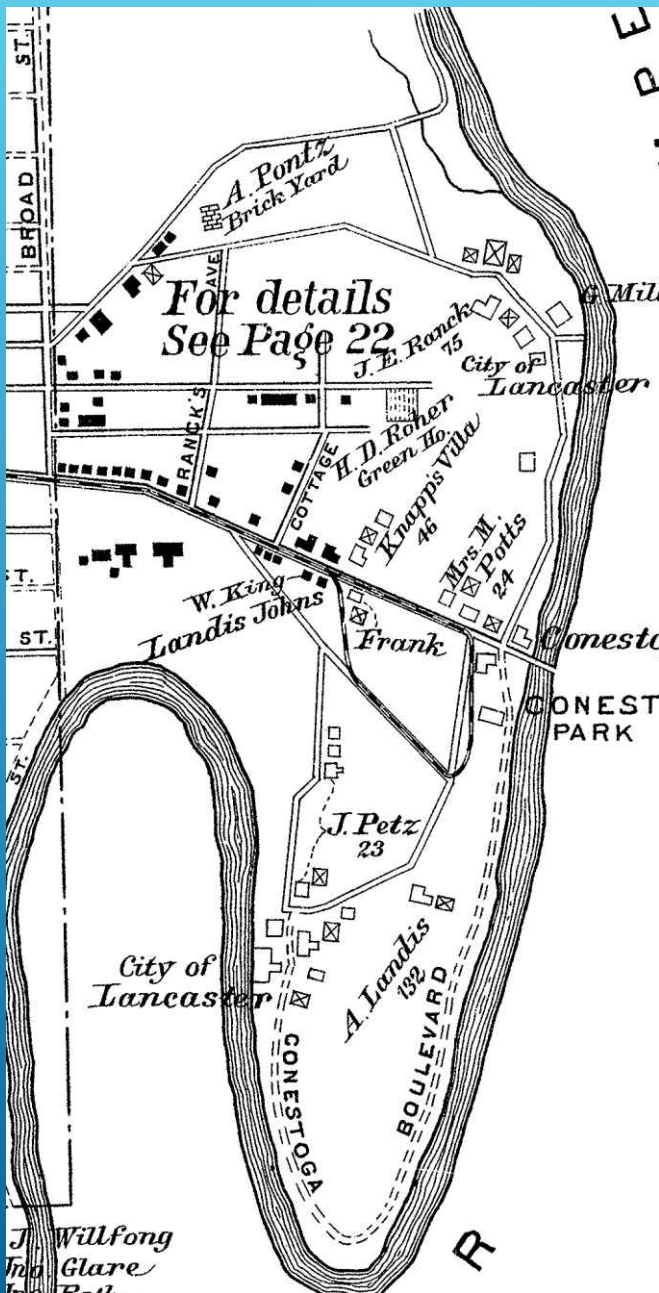


LANCASTER TOWNSHIP

RE-TELLING OUR HISTORY

Conestoga Park

June 13, 2022



1899



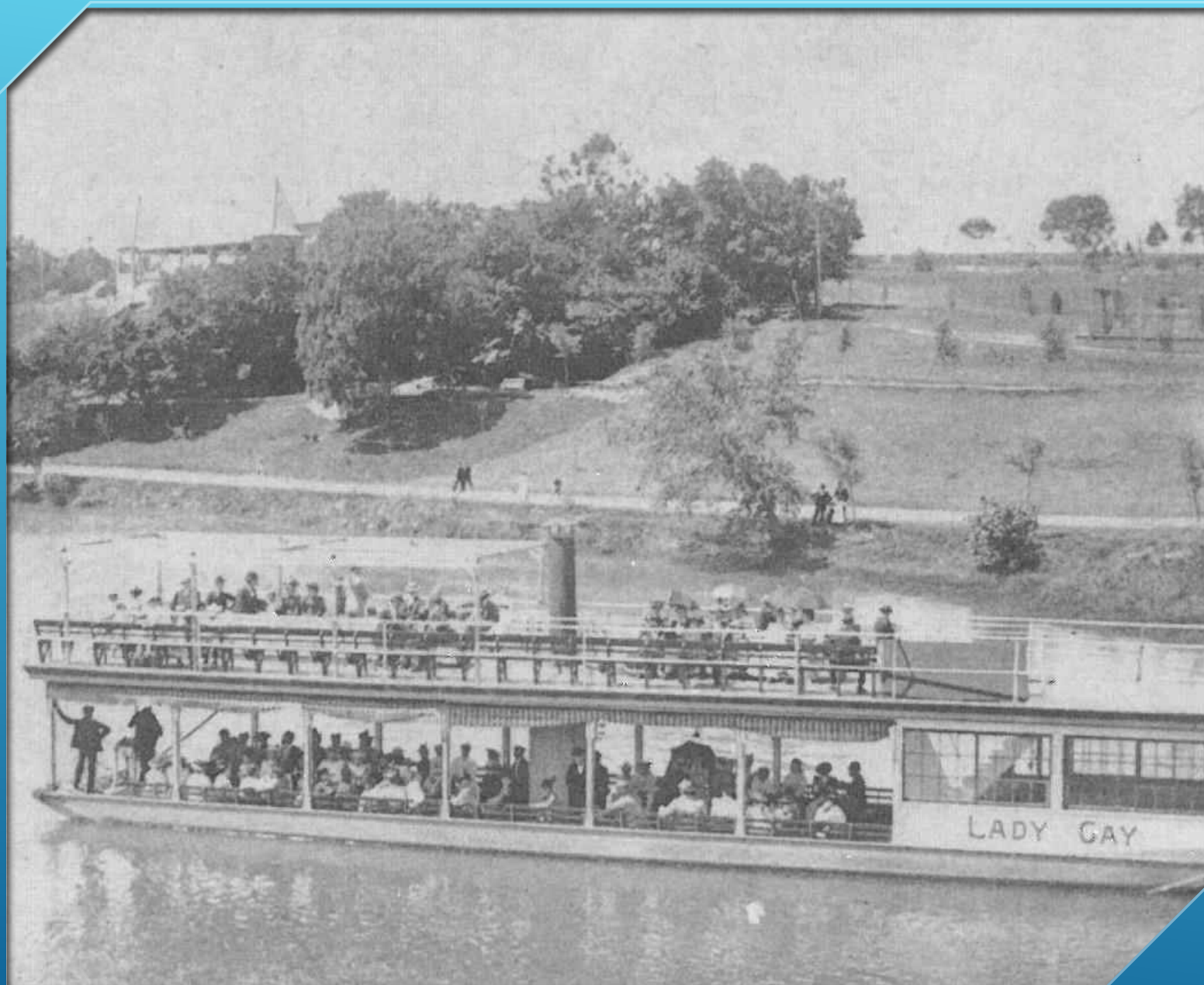
Recent

Much of this area is no longer in Lancaster Township, but the cool parts still are...



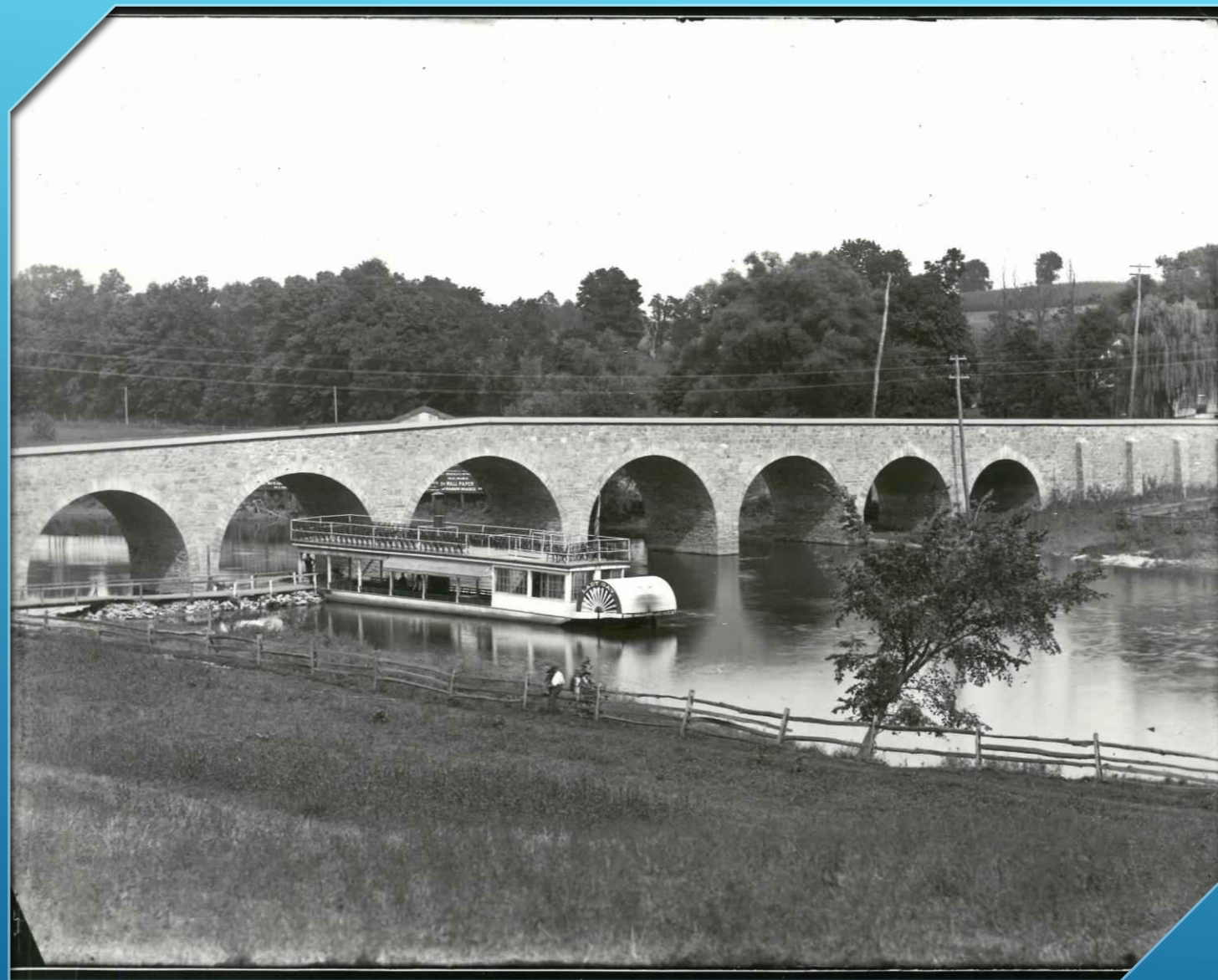
Built in the early 1890s as a trolley park, similar to West End Park (aka Maple Grove), but not developed with rides & a pool.

Looking north along the Conestoga, towards East King Street.



*Lady Gay
steamship
paddlewheel
boat, boulevard,
pavilion, open
fields, and trails*

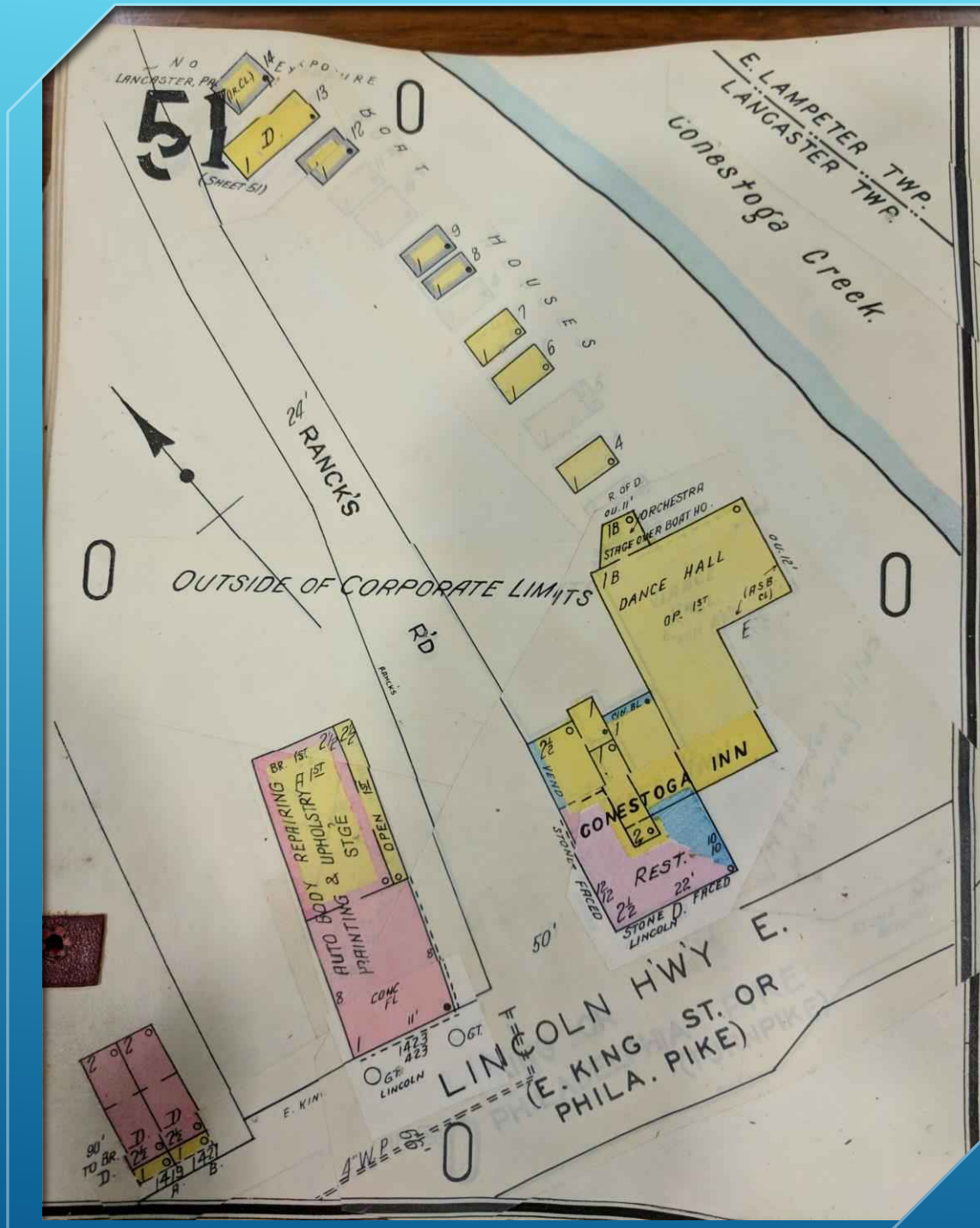
Looking southwest from the bridge



*Abram Witmer's
Bridge*

Looking northeast across the Conestoga, into Bridgeport

Sanborn
Fire
Insurance
Rate Map



Dance pavilion
and boat houses,
north of East King
Street



At the south end of Conestoga Park, People's Bathing Resort on the Lancaster Township side of the river and Rocky Springs was on the West Lampeter side.





Photograph is from 1940
PennPilot.psu.edu

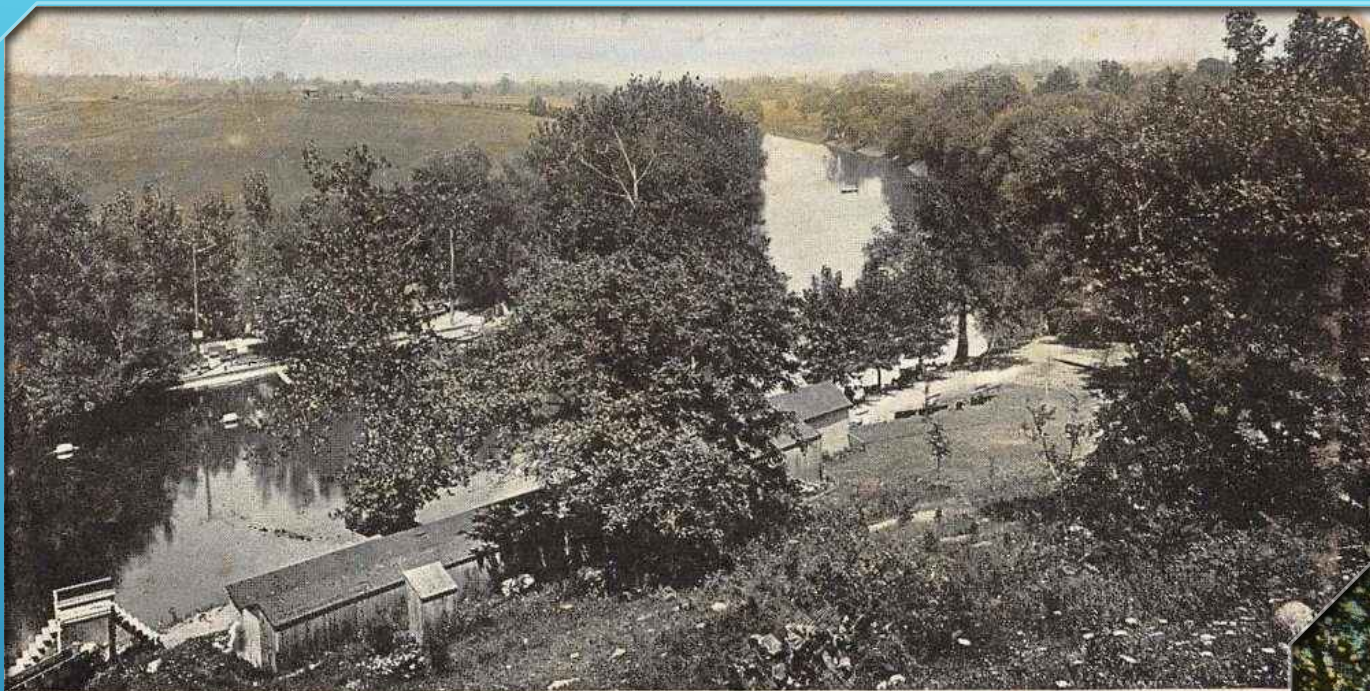
"Conestoga Park"

"Peoples' Bathing Resort"

"Rocky Springs"

Boathouse location?

At the south end of
Conestoga Park,
People's Bathing
Resort on the
Lancaster Township
side of the river and
Rocky Springs was on
the West Lampeter
side.



L. B. HERR

The Conestoga and Bathing Resorts, Lancaster, Pa.

At the south end of Conestoga Park, People's Bathing Resort on the Lancaster Township side of the river and Rocky Springs was on the West Lampeter side.



Peoples Park, Bridge and Pavilion,
Lancaster, Pa.



*The entire area
was a massive
step-pool
created by the
dam at "City
Mill" our
community's first
water supply.*

Looking east across the Conestoga, away from Sunnyside peninsula



South Duke Street

Sunnyside

Peoples Bathing Resort

First City Water Works and dam

Thaddeus Stevens School

Conestoga View

Rocky Springs

Bridgeport

Steamship paddle-wheel boat rides to Peoples Bathing Resort and Rocky Springs

Conestoga Inn, dance hall, Boondocks, & boat houses

Tell's Hain

Abram Witmer's 9-arch stone bridge, built ca. 1790

Ranck's Mill and dam

Railroad

SR 23

Approximate location of Old Doctor's Ford (NE corner of Lancaster Township & SE corner of Manheim Township in 1729)