



General NEWS & DATES to REMEMBER SPRING/SUMMER 2022

1240 Maple Avenue | Lancaster, PA 17603
(Lancaster County)
(717) 291-1213 | www.twp.lancaster.pa.us



VOLUNTEERS WANTED—persons looking to provide redirection for juveniles that have started down a criminal path.

Manheim Township Police are looking for volunteers to join the Lancaster Township Youth Aid Panel. The YAP board was created to be a diversionary plan to allow first time juvenile offenders to stay out of the justice system by making them reflect on the error of their ways and making them responsible for the consequences.

Volunteers should have an interest in meeting families and juveniles who have been referred by the Manheim Twp Police due to a minor criminal offense. Panel members will interview juveniles with input from parent(s)/or guardian and develop a contract for the juvenile to complete as a consequence for the offense. Contact with the Youth Aid Panel should be a learning experience for the juvenile to develop an understanding of the impact that his/her behavior has on their own future and on the community.

The panel meets at Manheim Township Police Station on the 2nd Tuesday of the month. This will require a commitment of 1-3 hours each month, to meet as a panel and review the cases.

A background check and volunteer clearances to work with children will be required.

Any questions on the program or to apply please contact Officer Littlehale at littlehale@manheimtownshippolice.org or 717-569-6401 ext 1545 to discuss the next steps.

PLANNING & ZONING

Office: 1353 Meadowcreek Lane | Lancaster, PA 17603

Tom Daniels, Director of Planning & Zoning

Direct Dial: (223) 221-7514 | Email: tdaniels@twp.lancaster.pa.us

Gretchen Smith, Planning & Zoning Assistant

Direct Dial: (223) 221-7515 | Email: gretchen@twp.lancaster.pa.us

The Planning & Zoning Office is responsible for enforcing [Township Ordinances](#). They oversee and process building/zoning permits, dumpster permits, smoke detector certification, and applications for the 2022 property re-investment program. In addition, this office handles zoning, property, & resident-related concerns. The various forms/applications for these processes can be found on the [township website](#).

PROPERTY RE-INVESTMENT PROGRAM 2022

Project Overview:

Lancaster Township is creating a limited fund to help and encourage property owners to achieve a higher standard of safety and quality of life for themselves and their tenants. The program allows for Lancaster Township to provide 50% matching funds up to \$2,500.00 per property for life safety, or quality of life upgrades such as heating and cooling, window replacement, electrical and plumbing upgrades, insulation, mold remediation etc.

Program Requirements:

- Open to all, but priority will be given to those addresses located in area's designated as low to moderate income as designated by the Small Business Administration's Targeted EID map.
- Inspections will take place prior to and post project to ensure quality and completion.
- We will have two phases (or time periods) for the project year 2022.

- In the first time-period, applications must be complete and submitted no later than March 18, 2022. Approved applicants will be notified on or about April 1st, 2022, and work must be completed and inspected by August 31, 2022.
- In the second time-period, applications must be complete and submitted no later than June 17, 2022. Approved applications will be notified on or about July 1, 2022, and work must be completed by November 30, 2022.
- Zoning, building, and stormwater permits may be required as part of the projects and are separate from this program.
- If applicable, property owners of successful applications who complete the project and receive township funds agree not to raise tenant rent for a period of twelve months.

If you would like to see if your property qualifies for priority consideration for this program, click on the link below*, then click on the *Go to the Map* box and put your address in the *Location* box at the top of the page.

*Link to SBA map: <https://sbaeidl.policymap.com/newmaps#/>

The application for this program can be found on the township website at this link > <https://www.twp.lancaster.pa.us/property-re-investment-program-2022>

MAIL or EMAIL completed applications to the Planning/Zoning Office:

Mailing address: Lancaster Township Zoning Office 1353 Meadowcreek Lane Lancaster, PA 17603	Gretchen Smith Email: Gretchen@twp.lancaster.pa.us OR Tom Daniels Email: tdaniels@twp.lancaster.pa.us
---	--

If you have any questions about the program, contact the Planning/Zoning Office:

Gretchen Smith Email: Gretchen@twp.lancaster.pa.us Phone: (223) 221-7515	Tom Daniels Email: tdaniels@twp.lancaster.pa.us Phone: (223) 221-7514
--	---

STORMWATER MANAGEMENT (MS4)

Office: 1353 Meadowcreek Lane | Lancaster, PA 17603

Ben Webber, Township Engineer

Direct Dial: (223) 221-7522 | Email: bwebber@twp.lancaster.pa.us

Illicit Discharge Reporting

Lancaster Township monitors roughly 60 locations where our stormwater enters a stream, creek, or river, in accordance with our mandate from the Pennsylvania Department of Environmental Protection. The locations can be one of the following:



Small pipes



Large pipes



Where a swale discharges into a waterway

We count on citizens like you to help us identify problems in the watershed that drains to these locations. Here's a partial list of Illicit Discharges that we are asking you to report, if you observe them happening or see evidence of such an occurrence.

Here's a list of what to report:

- Oil, gas, or other toxic material being dumped or spilled
- Sewage and / or process wastewater not flowing into a municipally-approved collection system
- Chlorinated swimming pool discharges
- Wash water containing detergent

Please contact the township via this link: <https://www.twp.lancaster.pa.us/illicit-discharge-reporting> or call the

2022 D A T E S to R E M E M B E R

APRIL:

- April 1: Trash/Recycle bills mailed
- Saturday, April 2: **Woody Waste opens for Saturdays** (8:00am to 1:00pm)
- Saturday, April 2: Yard waste bag availability starts at woody waste facility
- Monday, April 4: **Woody Waste opens Monday thru Thursday** (3:00pm to 7:00pm)
- **Monday, April 4: Street Sweeping begins**
- Monday, April 11: **Curbside Yard Waste Collection resumes.** *Collected every other week on regular collection day.*
- Friday, April 15: Township Office closed.
- Saturday, April 16: Woody Waste closed
- April 30: **Trash/Recycle payments due**

MAY:

- Friday, May 20: Large Appliance & Tire Collection
- Saturday, May 28: Woody Waste closed
- Monday, May 30: Woody Waste closed
- Monday, May 30: Township Office closed
- Monday, May 30: No trash/recycle collection. *Collection will be on a one-day delay for the week.*

JULY:

- Saturday, July 2: Woody Waste closed
- Monday, July 4: Woody Waste closed
- Monday, July 4: Township Office closed
- Monday, July 4: No street sweeping
- Monday, July 4: No trash/recycle collection. *ALL collection will be on a one-day delay for the week.*

SEPTEMBER:

- Saturday, September 3: Woody Waste closed
- Monday, September 5: Woody Waste closed
- Monday, September 5: Township Office closed
- Monday, September 5: No street sweeping
- Monday, September 5: No trash/recycle collection. *All collection will be on a one-day delay for the week.*

OCTOBER:

- Monday, October 3: Woody Waste Monday-Thursday hours change to 2:00pm to 6:00pm
- Thursday, October 13: **LAST DAY** for Curbside Yard Waste Collection
- Saturday, October 15: **LAST DAY** to get yard waste bags at the woody waste facility (8:00am to 1:00pm)
- Monday, October 17: Leaf collection begins on signed streets
- Monday, October 31: Woody Waste Monday-Thursday hours change to 2:00pm to 5:00pm
- Monday, October 31: **Halloween (TRICK OR TREAT)** celebrated 6:00pm to 8:00pm (*Rain or Shine*)

NOVEMBER:

- Saturday, November 19: **LAST SATURDAY** open for woody waste facility (8:00am to 1:00pm)
- Wednesday, November 23: **FINAL DAY** open for woody waste facility (2:00pm to 5:00pm)
- Thursday, November 24: No trash/recycle collection. *Thursday's collection will take place on Friday, November 25.*
- Thursday-Friday, November 24-25: Township Office closed
- **Final dates for raking leaves to curbside will be posted on the township website**

DECEMBER:

- Friday, December 23: Township Office closed
- Monday, December 26: Township Office closed

JANUARY 2023:

- Monday, January 2: Township Office closed
- Tuesday, January 3: Board of Supervisors Reorganization Meeting
- Wednesday, January 4: Board of Auditors Meeting
- **Parking Restrictions remain in force on signed streets thru January 19, 2023 (ending January 20) for a final street sweeping (weather permitting)**

TOWNSHIP DIRECTORY

Administration Office
1240 Maple Avenue | Lancaster, PA 17603
(717) 291-1213

SUPERVISORS

- Chair, [Iber Guerrero Lopez](#)
- Vice Chair, [Steven P. Elliott](#)
- Treasurer, [Benjamin H. Bamford](#)

Township Manager: Bill Laudien
• wlaudien@twp.lancaster.pa.us

Administrative Assistant: Patrice Allen
• info@twp.lancaster.pa.us

Finance Officer: Diana Hess
• dhess@twp.lancaster.pa.us

Planning & Zoning Office | Township Engineer
1353 Meadowcreek Lane | Lancaster, PA 17603

Director of Planning & Zoning: Tom Daniels
• tdaniels@twp.lancaster.pa.us
• Direct Dial: (223) 221-7514

Planning & Zoning Assistant: Gretchen Smith
• gretchen@twp.lancaster.pa.us
• Direct Dial: (223) 221-7515

Township Engineer: Ben Webber
• bwebber@twp.lancaster.pa.us
• Direct Dial: (223) 221-7522

Public Works Department

Trash & Recycling: Joanne Yost
• jyost@twp.lancaster.pa.us
• Direct Dial: (223) 221-7507

Receptionist: Robin VanLeer
• r.vanleer@twp.lancaster.pa.us

Director of Public Works: Mike Hamlin
• mhamlin@twp.lancaster.pa.us
• Direct Dial: (717) 293-1733

Public Works Superintendent: Devin Groff
• dgroff@twp.lancaster.pa.us
• Direct Dial: (223) 221-7523

Public Meetings are held at the township building, 1240 Maple Avenue. Those attending will enter through the double-doors located on Perry Avenue. **All meeting information is posted on the [township website](#).**

- [Board of Supervisors](#) - 2nd Monday of the month at 6:00pm
- [Planning Commission](#) - 3rd Tuesday of the month at 7:00pm
- [Zoning Hearing Board](#) - 4th Tuesday of the month at 7:00pm
- [Historical Commission](#) - April 4, June 6, August 1, October 3, December 5, 2022 at 6:30pm.
- [Building Code Board of Appeals](#) - held as needed



[SERVING EAST END]
63 Lafayette Way, Lancaster
(717) 392-5097
Fire Chief: Dave Keens
Website: www.lafayettefire.com
Facebook:
www.facebook.com/lafayettefire



[SERVING WEST END]
PO Box 210, Bausman
(717) 394-5353
Fire Chief: Steve Roy
Website: www.ltfld.org
Facebook:
www.facebook.com/LancasterTownshipFire



[SERVING LANCASTER TOWNSHIP]
1825 Municipal Drive, Lancaster
Administration: (717) 569-6401
Nonemergency: (717) 664-1180
EMERGENCY: Dial 9 1 1
Chief of Police: Tom Rudzinski
Website: www.manheimtownshippolice.org
CRIMEWATCH Network:
lancaster.crimewatchpa.com/manheimtwppd



525 Fairview Avenue
Lancaster, PA 17603
(717) 392-2115

Lancaster Rec provides neighborhood-based recreation and learning opportunities for all ages. Programs include youth and adult instructional sports programs and leagues, senior centers, fitness and wellness classes, summer playgrounds and day camps, full-day child care for infants through age 5, club activities, before and after school care, preschool education and seasonal family events.

To learn more about Lancaster Rec, visit their website at lancasterrec.org.



125 North Duke Street, Lancaster
(717) 394-2651

Lancaster Public Library's mission is to inspire, empower, and strengthen the community by connecting people with information, ideas, and enriching experiences.

To learn more about library events, programs, and services, visit lancasterpubliclibrary.org.

Calendar of events:
lancasterpubliclibrary.org/events/



265 Harrisburg Avenue, Lancaster
(717) 393-9622

Lancaster Family YMCA supports the health and well-being of children, adults, and families through a broad range of programs and events, including summer camp and community health programs. Key mission priorities are: Closing the Achievement Gap, Safety Around Water for children and Chronic Disease Prevention and Recovery.

Visit lancasteryymca.org to learn more about the programs offered.

IMPORTANT CONTACT NUMBERS

Comcast/Xfinity: ALL billing/service questions
(800) 266-2278

PPL Electric
Power outage or downed/broken street light:
(800) 342-5775
Downed wires: (800) 342-5775 (press 1, then 3, for emergency)

UGI Gas
Billing/Service: (800) 276-2722
Gas leak: Leave immediately with all people & pets.
Call (800) 276-2722 or dial 911 away from the building.

Water Service is supplied by City of Lancaster
Billing: (717) 735-3425

Sewer Services -

Contact the agency listed on the bill you receive

City of Lancaster Wastewater:

- (717) 291-4825
- After-hours Emergencies: (717) 293-5533

Lancaster Area Sewer Authority:

- (717) 299-4843
- After-hours Emergencies: (717) 396-9619

Suburban Lancaster Sewer Authority:

- (717) 560-7500
- Emergencies: (717) 293-5533

Service: (717) 291-4820

Emergencies: (717) 291-4816

Share this email with your Lancaster Township neighbors and encourage them to subscribe.

It's free, it's easy, and you can unsubscribe at any time.

Join our email
list

nextdoor





TRASH & RECYCLING NEWS & UPDATES SPRING/SUMMER 2022

1240 Maple Avenue | Lancaster, PA 17603
(Lancaster County)
(717) 291-1213 | www.twp.lancaster.pa.us

TRASH, RECYCLING & ENVIRONMENT

Joanne Yost, Office Administrator (*Trash/Recycling contact*)

Direct Dial: (223) 221-7507 | Email: jyost@twp.lancaster.pa.us

*The trash/recycling bill is increasing
and will take effect with the
April 1, 2022 billing*



At their February 14, 2022 meeting, the Lancaster Township Board of Supervisors approved the increase of the trash/recycle billing rate to \$320.00 per year. The new rate will take effect with the April 1, 2022 billing. Billing is done on a semi-annual basis—April 1st and October 1st.

The rate increase is a result of increases in the contracted cost for collection, an increase in tipping fees for waste taken to the Lancaster County Solid Waste Management Authority facilities, an increase in fees imposed for recycling materials, and an increase in fees for yard/leaf waste processing. The overall cost of the waste industry continues to go up, and trash haulers and townships have no control over these increased costs.

New Semi-annual Rate starting April 1, 2022:

- Regular rate: \$160.00
- 10% Senior discount rate (age 60+): \$144.00. The senior discount is only available to residents who OWN and LIVE at the billed property.

Payment Options: residents are highly encouraged to pay their bill through one of the three preferred methods below:

1. **ONLINE PAYMENT** (by credit card or check with nominal processing fee)
2. **DROP-BOX** at the Maple Avenue door. Place check or money order and the payment stub in a sealed envelope. (*Please--No cash when using the drop-box.*)
3. **MAIL** check or money order and the payment stub to the township office. (No cash, *please*, when mailing payment.)

If you want to pay at the reception window, be sure to bring your payment stub with you.

NOTE on paying the Senior Discount Rate: If you will be 60 years old by the time the new bills are mailed out, and your bill does not reflect the discount rate, you may pay the discounted rate using the same options above and providing proof of age by:

1. If using the online payment method, indicate in the notes section that you qualify for the senior discount. Once you have made the online payment, email a copy of your ID to Joanne Yost at the township office – jyost@twp.lancaster.pa.us, or mail the copy to the township office (Attn: Joanne Yost) along with your account #.
2. If using the drop box, place a copy of your ID in the envelope with your payment.
3. If mailing the payment, include a copy of your ID.

Trash & recycling must be placed out *the night before your collection day*. Trash and recycling

should not be placed on the curb earlier than the evening before collection day, and containers should be promptly removed after collection.

- Trash bags, containers, recycling bin must be within five (5) feet of the curb and *clearly visible to the collector*. During the winter (snow) season, it is suggested to use black trash bags so they are more readily visible in snow.
- **Trash is limited to** three 32-gallon trash cans or bags per week, no more than 30 pounds each.
- Additional cans or bags must have a **YELLOW** extra service tag (\$1.25) attached to each.
- Cans and/or bags weighing more than 30 pounds *or* over-sized items must have a **RED** extra service tag (\$4.00) attached to each.
- **Extra service tags can be purchased** at the township office (reception window) during regular business hours.
- *Absolutely NO construction/demolition debris will be collected.* It must be disposed of at the Lancaster County Solid Waste Facility at 1299 Harrisburg Pike.
- Click on [this link](#) for additional Township collection information.

***Illegal dumping of any regulated material is a punishable offense.
Lancaster Township will enforce all regulations and impose penalties on violators.***

SPECIAL NOTE: NO LOOSE TRASH IN YOUR TRASH CAN - *A few reasons why...*

- It's unsanitary for the hauler if they have to reach down into the trash can to lift out loose trash.
- Trash bags keep trash contained and can help keep your trash can cleaner.
- Bagged trash is much easier and faster to pick up and dump into the back of the truck.
- If you use a trash can with no lid, loose light-weight material may blow or fall out before the hauler even gets there to collect it. It then winds up blowing all around your neighborhood
- And, if you use a trash can with no lid, loose trash will be picked up by birds, squirrels, or other rodents, and then deposited all around your neighborhood.
- If the hauler lifts your can to dump your trash into the back of the truck, loose trash can blow away easily, especially on windy days.
- **It is important that all waste is bagged and that the bag is securely tied closed.**

The FAQs of Trash/Recycle Collection

- 1. When must trash/recycling be put out for collection?** Trash & recycling must be placed out ***the night before your collection day*** within five feet of the curb, and clearly visible to the collector. Recycling is collected the same day as trash, but not always at the same time.
- 2. What if they miss me?** If your trash and/or recycling is missed, **you must report it the same day or next day by 10AM** in order for it to be collected the day after your scheduled day; otherwise, it will have to wait until your next scheduled collection day.
- 3. What are acceptable trash containers?** *First*, placing your name and address on your container is recommended. *Second*, containers should have pre-molded handles. Fifty-five (55) gallon barrels, or any container or barrel without handles, are unacceptable trash containers—they present a safety hazard to the hauler and cannot be picked up easily. *Third*, containers with lids are helpful in preventing birds, squirrels, and other animals from spreading trash around the curb, the street, and your neighborhood.
- 4. What is THE BIG 4 in Recycling?** Recycling is mandatory in the township, and is a co-mingled program. ***The only acceptable materials for recycling are THE BIG 4*** corrugated cardboard, plastic bottles/jugs with necks, metal food/beverage cans, and glass jars/ bottles. All items should be cleaned out. Recycle containers can be purchased at the township office. If purchased elsewhere, be sure the container is clearly marked RECYCLING, and includes your name and address. *In case of rain, snow, ice, or high winds, keep corrugated cardboard inside until the following week.*
- 5. I have extra trash bags/containers over the weekly limit of three. Will the contractor take them?** Yes, ***BUT ONLY IF*** there is a **YELLOW** extra service tag (\$1.25) attached to each and they are under the 30 lb. limit. *Bags/containers over 30 lbs. require a RED tag.*
- 6. How do I dispose of an over-sized item?** **EACH** over-sized item must have a **RED** extra service tag (\$4.00) attached to it. You may put out ***only two (2) red tag items per week***. These items are collected on the same day as your regular trash day. **Over-sized items include:** bicycle, microwave, mattress, box spring, couch, chair, small furniture, carpet (*cut into 5 ft. pieces & bundled or tied*), a house door, toilet, tub, sink, charcoal grill, gas grill with **PROPANE TANK REMOVED**. Contact HHW Facility - (717) 397-9968 about disposal of all propane tanks, including those for camping stoves. ***Dehumidifiers, large appliances, and tires are NOT considered an over-sized item.*** These are collected during the twice yearly large appliance/tire collection or they can be taken to the Lancaster County Solid Waste Authority, 1299 Harrisburg Pike.

7. **How do I dispose of batteries?** Residents may pick up a special battery collection bag at the township office. Household batteries (and cell phones) can be placed in the bag. **Once the bag is full**, place it on the ground NEXT TO your trash container, NOT IN IT or the recycle container. The trash hauler will collect the bag(s) during regular trash pick-up. Household batteries and cell phones can also be taken to the county [household hazardous waste facility](#) at 1299 Harrisburg Pike. **Automotive batteries must be taken to the HHW facility.**

8. **How should electronic devices be disposed of?** PA Covered Devices Recycling Act 108 of 2010 prohibits the disposal of e-waste with trash or recycling (e.g. televisions, computers/accessories, tables, e-readers, cell phones/chargers/accessories, cameras, etc.). These items must be taken to the county Hazardous Waste Facility at 1299 Harrisburg Pike. (717) 397- 9968. For a complete list of these items, click [here](#).

9. **How should Sharps/needles be disposed of?** **NEVER** put loose Sharps/needles in the trash —**ALWAYS USE a Safe Clip™**. Lancaster County Solid Waste provides them for free, and they are available for purchase at most pharmacies. Once full, place container in the trash, never in recycling. Click on [this link](#) for more information on proper disposal of medical waste.

10. **Who is required to use the township's trash contractor?** All landowners within the township must have their trash picked up by the township hired contractor. Exceptions are apartment buildings with four or more units and businesses (not including in-home occupations). Those that are exempt from being on the township trash service are still required to have a licensed LCSWMA-approved hauler to pick up their trash. Apartment owners are to provide trash/recycling opportunities for their tenants. **It is the landlord's responsibility to inform tenants of any ordinances the township has that may affect them.**

RECYCLING IS MANDATORY IN LANCASTER

TOWNSHIP (by Ord1990-02) for all residents, apartment dwellers, and businesses within the township. Click [here](#) for detailed information on recycling.



This is a co-mingled program. **ONLY the "BIG 4"** are accepted.

- **ALL items** MUST BE **cleaned out** before placing in the recycle bin.
- **Corrugated cardboard** needs to be **flattened**, and **bottles, cans, jars emptied, rinsed, & lids removed**.
- **DO NOT** put recycling in a plastic bag or paper bag before placing in the bin. **It will not be collected.**
- In case of rain, snow, ice, or high winds, keep corrugated cardboard inside until the following week.

Recycle containers may be purchased at the township office at a cost of \$10.00 each, or you may purchase one at Lowes, Home Depot, etc. *Residents should make sure their name and address is visible on both their trash and recycle receptacles.*

Recycling right doesn't have to be hard.

JUST FOCUS ON THE BIG 4! PLACE ONLY THESE ITEMS IN YOUR BIN.

1	2	3	4
CORRUGATED CARDBOARD	PLASTIC BOTTLES & JUGS WITH NECKS	METAL FOOD & BEVERAGE CANS	GLASS JARS & BOTTLES
Flattened	Emptied, Rinsed, & Lids Removed		

All other items, such as those below, do not belong in your recycling bin.

It's okay to throw **everything else** away. It will be turned into energy.

Lancaster County has an advanced waste-to-energy process that converts these materials into renewable energy, powering local homes and businesses and helping to reduce our reliance on non-renewable sources of energy. So, when in doubt, throw it out.

Visit recyclerightlancaster.org for more tips.

RECYCLE RIGHT Lancaster
Powered by LCSWMA

What Can Be Recycled? Do not put anything other than the **"BIG 4"** in your recycling bin. *"When in doubt, throw it out!"*. LCSWMA will transform discarded waste into renewable energy.

The BIG 4 Includes:

Corrugated Cardboard: This includes material consisting of a fluted corrugated sheet, like shipping and packing boxes. Flatten all boxes and **remove packaging**, including Styrofoam, peanuts, bubble wrap, and plastic liners. **Do NOT** put paperboard (cereal boxes, tissue boxes, shoe boxes), pizza boxes, newsprint, or junk mail in the recycling bin.

Plastic Bottles and Jugs: This includes plastic bottles, jars, jugs and anything else **with a neck**. **Throw away the lids and rinse out any residue**. All other plastic material is considered trash. *Ignore the numbers*, as they don't indicate if something is recyclable. **Do NOT** put plastic bags, toys, buckets, packaging, Styrofoam, hosing, furniture, or other plastic items in the bin.

Metal Food and Beverage Cans: This includes all food and beverage cans made from aluminum or steel. **Throw away the lids and rinse out any residue**. **Do NOT** put metal hangers, cooking pots and pans or other scrap metal like foil and pie plates in the bin.

Glass Jars and Bottles: This includes clear, green and brown glass bottles and jars. **Throw away the lids and rinse out any residue**. **Do NOT** put light bulbs, dishes, glassware, window or automotive glass, vases, or any other glass material in the bin.

ALL ELECTRONIC WASTE is **PROHIBITED** from being disposed of with your trash or recycling by the PA Covered Devices Recycling Act 108 of 2010. Residents and businesses may drop electronic waste for FREE at the county [Household Hazardous Waste Facility](#) at 1299 Harrisburg Pike. All electronics must be intact and will not be accepted by the HHW Facility otherwise.

Items include:

- Batteries: Household & Automotive (household batteries may also be placed in a special battery bag, then placed on the ground NEXT TO your trash container, NOT IN IT or the recycle bin. Click [here](#) for info)
- Desktop computers & Laptops
- Monitors & Computer peripherals, including keyboard, mouse, printer and speakers
- Televisions & e-Readers
- Cameras: photo and video
- Cell phones/smart phones (may also be placed in a special battery bag; click [here](#) for info)
- Phone peripherals, such as: chargers, batteries, Bluetooth earpieces, air cards, clips, cases
- DVD and VCR players
- MP3 players and iPods
- All electronic game players, video game consoles, and controllers
- Stereos and peripherals: CD players, turntables, amplifiers, speakers (no wooden materials)

HOLIDAY/WEATHER-RELATED COLLECTION SCHEDULES

ONLY certain holidays affect regular collection schedules depending on what day the holiday falls on. **Below are the ONLY HOLIDAYS the waste hauler will be observing in 2022:**

- **Monday, May 30** – NO COLLECTION. Collection will be on a one-day delay for the week
- **Monday, July 4** – NO COLLECTION. Collection will be on a one-day delay for the week. *Curbside Yard Waste collection on Saturday, July 9.*
- **Monday, September 5** – NO COLLECTION. Collection will be on a one-day delay for the week
- **Thursday, November 24** – NO COLLECTION. Thursday collection will be on Friday, November 25

A [printable copy of the 2022 Special Collection Calendar](#) is available on the township website.

Extreme weather events (flooding, snow, ice, etc.) may affect collection by causing stoppage or delays. When events occur, the contracted hauler will provide information to the township. As it is received, the township will make every effort to post updates on a variety of platforms:

- [EMAIL](#) blast
- www.twp.lancaster.pa.us
- Nextdoor.com
- [Twitter.com/LTEMC](https://twitter.com/LTEMC)
- Facebook.com/LancTwpMunicipality

SPECIAL COLLECTION DATES!



Curbside Yard Waste Collection starts **MONDAY, April 11, 2022.**

Collected **EVERY OTHER WEEK** on your regular collection day.

Special Note: Due to July 4 holiday falling on a Monday, ALL collection for that week will be on a one-day delay schedule.

Place bags out on the curb the night before your collection day.

If it is raining or rain is in the forecast, please hold curbside yard waste until the next collection date. Yard waste bags are paper, and paper will rip and tear when



Large Appliances & Tires

Spring collection: Friday, May 20, 2022
Fall collection: Friday, November 11, 2022

\$12 Blue tag must be attached to EACH appliance. Includes washers, dryers, dishwashers, refrigerators, stoves, air conditioners, dehumidifiers, etc.

\$2.00 Purple tag must be attached to EACH tire. Standard car, truck, or motorcycle tires only. **NO RIMS. NO COMMERCIAL OR OVER-SIZED TIRES.**

Tags can be purchased at the township office. If you

wet.

Collection **DOES NOT include:** grass clippings, fruit & vegetable waste, tree stumps, dirt, rocks, or stones. *Bags containing these items will not be collected, and will be left at the curb.* **Yard waste in plastic bags will not be collected and will be left at the curb.**

Collection ENDS Thursday, October 13, 2022.

Yard waste bags will be available starting Saturday, April 2, 2022, during regular [woody waste facility hours](#).

Residents may also take yard waste to the township's woody waste facility during its seasonal [operating hours](#).

purchased a tag for an earlier collection and did not use it at that time and want to use it now, *email* jvost@twp.lancaster.pa.us or call (223) 221-7507 at least two days before the collection date to place your address and item(s) on the collection list.

All tagged items must be at curbside the evening before the collection date.

Lancaster County Solid Waste Facility also accepts large appliances, and car, truck, & motorcycle tires, with or without rims. Call (717) 397-9968, or visit their [website](#) for hours and fees.

Share this email with your Lancaster Township neighbors and encourage them to subscribe.

It's free, it's easy, and you can unsubscribe at any time.

Join our email
list

nextdoor





PUBLIC WORKS NEWS & UPDATES

SPRING/SUMMER 2022

1240 Maple Avenue | Lancaster, PA 17603
(Lancaster County)
(717) 291-1213 | www.twp.lancaster.pa.us

Michael R. Hamlin, Director of Public Works

Ph: (717) 293-1733 | Email: mhamlin@twp.lancaster.pa.us

Devin Groff, Public Works Superintendent

Ph: (223) 221-7523 | Email: dgroff@twp.lancaster.pa.us

WOODY WASTE FACILITY

- Service is for Lancaster Township **residents ONLY** --have ID ready for the gate attendant.
- **NO** commercial landscapers (work-for-hire individuals).
- All traffic must enter via the Elm Avenue service road (behind Giant at Stone Mill Plaza), and exit via Columbia Avenue Eastbound only.
- Access to the facility will be controlled. We appreciate your patience.
- **Yard waste (bio-bags)** will be available starting Saturday, April 2, 2022, during regular facility hours.



2022 Days and Hours of Operation - *weather permitting*

A severe weather event may cause the closure of the facility.

- **Saturday hours starting April 2nd** — 8:00am to 1:00pm

- **Starting April 4th** — Monday thru Thursday, 3:00pm to 7:00pm
- **Starting October 3rd** — Monday thru Thursday, 2:00pm to 6:00pm
- **Starting October 31st** — Monday thru Thursday, 2:00pm to 5:00pm

- **LAST SATURDAY** is November 19 — 8:00am to 1:00pm

- **FINAL DAY** is Wednesday, November 23 — 2:00pm to 5:00pm

- The **LAST DAY to pick up yard waste bags** is Saturday, October 15

The facility is closed Fridays, Sundays, and holiday weekends/holidays.

Woody Waste Facility will be CLOSED on the following dates in 2022:

- Saturday, April 16
- Saturday, May 28
- Monday, May 30
- Saturday, July 2
- Monday, July 4
- Saturday, September 3
- Monday, September 5

NO BAGS, including Bio Bags, are to be left at the facility. ALL bags must be dumped and taken with you.

**The facility DOES NOT ACCEPT grass clippings.
ABSOLUTELY NO DUMPING OF WOODY WASTE
OUTSIDE OF ENTRANCE GATE!**

Woody Waste area is under Video Surveillance. Violators Will Be Cited!



Woody Waste MULCH

Self-load - DAWN TO DUSK while supply lasts. Located outside of the Woody Waste entrance off Elm Ave.

Bulk Mulch will be loaded:

- Monday, Tuesday, Wednesday, Thursday thru May 26 – 3:30pm to 4:15pm.
- On three Saturdays - April 2, April 23, and May 7 – 8:00am to Noon.
- No appointment necessary. *Lancaster Township residents only.*



Bulk Mulch After May 26 is by APPOINTMENT ONLY - (717) 291-1213. *Lancaster Township residents only.*

**The woody waste facility is for Lancaster Township residents only.
Lancaster Township residents are required to show ID.**

Street Sweeping begins Monday, April 4, 2022

Click [HERE](#) for the **2022 Street Sweeping Calendar**.



On SIGNED streets: Street sweeping takes place the first and third Monday, Tuesday, Wednesday and Thursday of each month.

If your street has a posted sign that lists certain days/hours of No Parking, then it is a “signed” street.

Police will enforce prohibited parking. No warning notices will be issued! To avoid receiving a ticket, abide by the schedule as it appears on the posted street sign. Enforcement of prohibited parking remains in force through January 19, 2023 and ends January 20, 2023.

NON-SIGNED streets: There is no scheduled street sweeping for non-signed streets.

For non-signed streets, the crew attempts to clean every street in the township a minimum of twice a year—once in the fall and once in the spring.

There is no notification as to when this will take place.

If vehicles are parked on the street, the operator will go around them. If your street is heavily littered, call the public works office at (717) 293-1733.

- **ABSOLUTELY NO** grass clippings, tree branches, or yard waste are to be placed on the street—these items will result in broken equipment and delays.
- Weather, equipment, and volume of leaves can affect street sweeping at any time.



2022 Local Road/Infrastructure Projects

For the latest news on local road & infrastructure projects, go to the township website - [Paving Projects/Road Repairs | Lancaster Township](#) - information and updates will be posted as it becomes available.

About Adopt-an-Inlet Program

Lancaster Township inspects, maintains and services what is known as a “Municipal Separate Storm Sewer System” (MS4). The MS4 is a connected collection of conveyances. These conveyances—curbs, gutters, ditches, naturally occurring and man-made channels, pipes, tunnels, catch basins, or storm drains—carry storm water and storm water runoff which ultimately discharges into rivers, streams and creeks of the waters of the United States.

Storm water arriving as rain, snow, sleet, and hail falls upon the ground and is often absorbed. However when the rate of precipitation is such that the ground cannot absorb it all, or the surface is impervious such as parking lots, patios, sidewalks, and streets, the precipitation becomes storm water runoff and travels through the MS4 and ultimately into our waters.

The United States EPA has determined that polluted storm water runoff is a leading contributor to impaired water quality in over 40% of the United States waters which do not meet water quality standards. Trash allowed to collect at the opening of an inlet restricts the ability of the inlet to adequately handle the flow of storm water runoff attempting to enter the inlet. As the floatable trash and other litter is forced into the inlet, it too can be ultimately discharged into our waters. There are literally thousands of street and backyard inlets in the township. The public works department routinely inspects, cleans, and maintains all of the conveyances making up the MS4, but as you



can imagine, litter, leaves, and other debris can collect very quickly.

Lancaster Township is engaged in a public education program regarding the potential for reducing the amount and concentration of polluted storm water runoff being discharged into waterways flowing into any United States waters. As part of Lancaster Township's storm water management education program, an offer is being made to all residents to participate in a very active and meaningful manner by joining the "[Adopt-an-Inlet](#)" program.

When you "[Adopt-an-Inlet](#)" you enter into an agreement with Lancaster Township to regularly check your adopted inlet for the following conditions:

- Check the inlet regularly for trash, debris, litter, and leaves:

Note the condition of the Inlet

- 1) Broken curb or adjacent roadway surfaces
- 2) A dislodged or damaged grate or cover
- 3) Sinking of the manhole or inlet

- Notice if the interior of the inlet seems to be full:

When conditions are dry (no rain for the last 2 days or more)

- 1) Note if there is any flow occurring in the inlet
- 2) If so does the flow have an odor
- 3) If flow is present does it have a visible color
- 4) If flow is present does it have a "sheen" or oily appearance

- During and after a rain and/or snow storm:

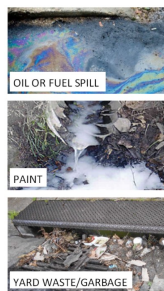
- 1) Notice if there is any ponding or standing water
- 2) How long does the ponding last
- 3) How big was the pond which formed

Report the above conditions using the "[Inlet Inspection Form](#)," or call the Public Works office at (717) 293-1733.

- **NEVER ATTEMPT TO WADE INTO A DRAINAGE AREA WITH OPEN INLETS OR PIPES IN AN EFFORT TO UNBLOCK THEM – CALL THE PUBLIC WORKS DEPARTMENT FOR HELP – (223) 221-7523 or (717) 293-1733.**
- Call the Public Works Department with any concerns regarding potential pollutants.
- Call the Public Works Department anytime you notice blocked inlets or standing water of unusual amount or that does not subside.

Residents should:

- Avoid using pesticides and fertilizer near the systems entry points or where runoff is likely,
- Limit the amount of pesticides and fertilizers used,
- Repair any oil and hydraulic leaks in automobiles, trucks, and equipment,
- Avoid allowing pet wastes to remain in streets or gutters,
- Report any sighting or suspicion of the pouring a hazardous substance into the inlet or any conveyance, such as: Oil, Paint, Fuel, Chemicals, or Cleaners.



Illicit Discharge Reporting

As part of the management of our stormwater system and to provide residents with a mechanism to report any observed discharges to the stormwater system that might be illicit, dangerous, or undesirable, we have the [Citizen Reporting Illicit Discharge Form](#).

Please alert the public works department to any suspected source of non-stormwater observed being discharged into the ground, our physical piped system, or directly to any stream, river, or pond. Your observations are vital to successfully managing our storm water systems.

The [Citizen Reporting Illicit Discharge Form](#) is for use by residents and non-residents who observe what they expect is an illicit discharge into the MS4's storm water system, or an illicit discharge into the ground or directly to the waters of the Commonwealth.



**Know what's below.
Call before you dig.**

PA ONE CALL

- **STOP! Call Before You Dig!**
- **DIAL 8 1 1 or 1-800-242-1776**
- **No Charge for Homeowners**
- **And It's The Law! State law requires you to call the PA One Call System at least three business days before you dig.**

The [PA One Call](#) system is a non-profit Pennsylvania corporation created to help protect the underground facilities

of members through communication with any person planning to disturb the earth. The purpose is to prevent damage to underground facilities. To promote safety, they provide an efficient and effective communications network among project owners, designers, excavators, and facility owners, and have created a uniform color code for various utilities. They are as follows:

White—proposed excavation
Pink—temporary survey markings
Red—electric power lines, cables, conduit and lighting cables
Yellow—gas, oil, steam, petroleum or gaseous materials
Orange—communication, alarm or signal lines, cables or conduit
Blue—water, irrigation and slurry lines
Purple—reclaimed water, irrigation and slurry Lines
Green—sewers (sanitary and storm) and drain lines

Share this email with your Lancaster Township neighbors and encourage them to subscribe.

It's free, it's easy, and you can unsubscribe at any time.

Join our email
list

nextdoor



LANCASTER TOWNSHIP
2022 SPECIAL COLLECTION DATES

SPECIAL COLLECTIONS	
REAL CHRISTMAS TREES	Friday, January 14, 2022 <i>Collected on ONE DAY ONLY!</i>
CURBSIDE YARD WASTE Collected <u>EVERY OTHER WEEK</u> on your regular collection day.	Starts April 11; Ends October 13 Due to Monday, July 4 holiday, all collection will be delayed by one day.
LARGE APPLIANCES & TIRES (Spring Collection)	Friday, May 20
LARGE APPLIANCES & TIRES (Fall Collection)	Friday, November 11

HAULER HOLIDAYS FOR 2022	
Monday, May 30 – NO COLLECTION	<i>Collection will be on a one-day delay for the week</i>
Monday, July 4 – NO COLLECTION	<i>Collection will be on a one-day delay for the week. Curbside Yard Waste collection on Friday, July 8.</i>
Monday, September 5 – NO COLLECTION	<i>Collection will be on a one-day delay for the week</i>
Thursday, November 24 – NO COLLECTION	<i>Thursday collection will be on Friday, November 25</i>

[illegible]

2022 special collection information....

- **Curbside collection of REAL Christmas trees: Friday, January 14, 2022** - township wide on **ONE DAY ONLY!**

If you miss the free collection day, you will need to purchase a \$4 red tag to have the tree collected.

Artificial trees are not part of the free collection and **MUST HAVE** a \$4 red tag attached.

ALL decorations must be removed from trees AND no trees in tree bags.

- **Curbside Yard Waste Collection: STARTS** Monday, April 11, 2022; **ENDS** Thursday, October 13, 2022

Collected **EVERY OTHER WEEK** on your regular collection day.

Special Note: Due to July 4 holiday falling on a Monday, all collection for that week will be on a one-day delay schedule.

- **Large Appliance & Tire Collection: (Spring Collection)** Friday, May 20, 2022. **(Fall Collection)** Friday, November 11, 2022.

A \$12 **Blue** tag must be attached to each appliance.

A \$2 **Purple** tag must be attached to each tire. **NO** commercial or over-sized tires.

If you purchased a **Blue** or **Purple** tag at an earlier date and did not use it, you must notify the township office at least **two (2) business days prior to the collection date** to place your address and the item(s) on the hauler's list. Send an email to jjost@twp.lancaster.pa.us, or call (717) 291-1213. Tags are purchased at the township office, 1240 Maple Avenue.

~~~~~

**ONLY certain holidays** affect regular collection schedules depending on what day the holiday falls on. If your collection day falls on or after the "the hauler observed holiday", your collection will be delayed one day. *If the actual holiday falls on a Saturday or Sunday, there is **NO CHANGE** to the collection schedule.*

**Holidays observed by the contracted hauler** are listed below **AND** are **only observed if the actual holiday occurs on a weekday:**

- |                    |                    |
|--------------------|--------------------|
| • New Year's Day   | • Labor Day        |
| • Memorial Day     | • Thanksgiving Day |
| • Independence Day | • Christmas Day    |

**Extreme weather events** (flooding, snow, ice, etc.) *may affect* collection by causing stoppage or delays. When events occur, the contractor will provide information to the township. As it is received, the township will make every effort to post updates on a variety of platforms:

- |                                                                        |                                                                                               |
|------------------------------------------------------------------------|-----------------------------------------------------------------------------------------------|
| • <a href="#">EMAIL</a>                                                | • <a href="https://www.nextdoor.com">Nextdoor.com</a>                                         |
| • <a href="http://www.twp.lancaster.pa.us">www.twp.lancaster.pa.us</a> | • <a href="https://twitter.com/LTEMC">Twitter.com/LTEMC</a>                                   |
|                                                                        | • <a href="https://www.facebook.com/LancTwpMunicipality">Facebook.com/LancTwpMunicipality</a> |



**2022 Street Sweeping & Leaf Collection Schedule for SIGNED STREETS**  
 FIRST & THIRD - MONDAY, TUESDAY, WEDNESDAY, and THURSDAY of each month

Abide by the schedule as it appears on the posted street sign. Police will enforce prohibited parking. **NO WARNING NOTICES WILL BE ISSUED!**  
 Parking restrictions will remain in force thru January 19, 2023 (ending January 20) to allow for a final street sweeping (weather permitting).

**STREET SWEEPING ON SIGNED STREETS BEGINS APRIL 4**

| APRIL 2022 |     |      |     |     |     |     |
|------------|-----|------|-----|-----|-----|-----|
| SUN        | MON | TUES | WED | THU | FRI | SAT |
|            |     |      |     |     | 1   | 2   |
| 3          | 4   | 5    | 6   | 7   | 8   | 9   |
| 10         | 11  | 12   | 13  | 14  | 15  | 16  |
| 17         | 18  | 19   | 20  | 21  | 22  | 23  |
| 24         | 25  | 26   | 27  | 28  | 29  | 30  |

| MAY 2022 |     |      |     |     |     |     |
|----------|-----|------|-----|-----|-----|-----|
| SUN      | MON | TUES | WED | THU | FRI | SAT |
| 1        | 2   | 3    | 4   | 5   | 6   | 7   |
| 8        | 9   | 10   | 11  | 12  | 13  | 14  |
| 15       | 16  | 17   | 18  | 19  | 20  | 21  |
| 22       | 23  | 24   | 25  | 26  | 27  | 28  |
| 29       | 30  | 31   |     |     |     |     |

| JUNE 2022 - <i>NOTE THE DIFFERENT DATES</i> |     |      |     |     |     |     |
|---------------------------------------------|-----|------|-----|-----|-----|-----|
| SUN                                         | MON | TUES | WED | THU | FRI | SAT |
|                                             |     |      | 1   | 2   | 3   | 4   |
| 5                                           | 6   | 7    | 8   | 9   | 10  | 11  |
| 12                                          | 13  | 14   | 15  | 16  | 17  | 18  |
| 19                                          | 20  | 21   | 22  | 23  | 24  | 25  |
| 26                                          | 27  | 28   | 29  | 30  |     |     |

| JULY 2022<br><i>No sweeping Monday 7/4 (Holiday)</i> |              |      |     |     |     |     |
|------------------------------------------------------|--------------|------|-----|-----|-----|-----|
| SUN                                                  | MON          | TUES | WED | THU | FRI | SAT |
|                                                      | <del>4</del> | 5    | 6   | 7   | 8   | 9   |
| 10                                                   | 11           | 12   | 13  | 14  | 15  | 16  |
| 17                                                   | 18           | 19   | 20  | 21  | 22  | 23  |
| 24                                                   | 25           | 26   | 27  | 28  | 29  | 30  |
| 31                                                   |              |      |     |     |     |     |

| AUGUST 2022 |     |      |     |     |     |     |
|-------------|-----|------|-----|-----|-----|-----|
| SUN         | MON | TUES | WED | THU | FRI | SAT |
|             | 1   | 2    | 3   | 4   | 5   | 6   |
| 7           | 8   | 9    | 10  | 11  | 12  | 13  |
| 14          | 15  | 16   | 17  | 18  | 19  | 20  |
| 21          | 22  | 23   | 24  | 25  | 26  | 27  |
| 28          | 29  | 30   | 31  |     |     |     |

| SEPTEMBER 2022 - <i>NOTE THE DIFFERENT DATES</i><br><i>No sweeping Monday 9/5 (Holiday)</i> |              |      |     |     |     |     |
|---------------------------------------------------------------------------------------------|--------------|------|-----|-----|-----|-----|
| SUN                                                                                         | MON          | TUES | WED | THU | FRI | SAT |
|                                                                                             |              |      |     | 1   | 2   | 3   |
| 4                                                                                           | <del>5</del> | 6    | 7   | 8   | 9   | 10  |
| 11                                                                                          | 12           | 13   | 14  | 15  | 16  | 17  |
| 18                                                                                          | 19           | 20   | 21  | 22  | 23  | 24  |
| 25                                                                                          | 26           | 27   | 28  | 29  | 30  |     |

**LEAF COLLECTION ON SIGNED STREETS BEGINS OCTOBER 17**

| OCTOBER 2022 |     |      |     |     |     |     |
|--------------|-----|------|-----|-----|-----|-----|
| SUN          | MON | TUES | WED | THU | FRI | SAT |
|              |     |      |     |     |     | 1   |
| 2            | 3   | 4    | 5   | 6   | 7   | 8   |
| 9            | 10  | 11   | 12  | 13  | 14  | 15  |
| 16           | 17  | 18   | 19  | 20  | 21  | 22  |
| 23           | 24  | 25   | 26  | 27  | 28  | 29  |
| 30           | 31  |      |     |     |     |     |

| NOVEMBER 2022 - <i>NOTE THE DIFFERENT DATES</i> |     |      |     |     |     |     |
|-------------------------------------------------|-----|------|-----|-----|-----|-----|
| SUN                                             | MON | TUES | WED | THU | FRI | SAT |
|                                                 |     | 1    | 2   | 3   | 4   | 5   |
| 6                                               | 7   | 8    | 9   | 10  | 11  | 12  |
| 13                                              | 14  | 15   | 16  | 17  | 18  | 19  |
| 20                                              | 21  | 22   | 23  | 24  | 25  | 26  |
| 27                                              | 28  | 29   | 30  |     |     |     |

**FINAL DATES TO PUT LEAVES OUT WILL BE LISTED ON TWP WEBSITE**

| DECEMBER 2022 - <i>NOTE THE DIFFERENT DATES</i> |     |      |     |     |     |     |
|-------------------------------------------------|-----|------|-----|-----|-----|-----|
| SUN                                             | MON | TUES | WED | THU | FRI | SAT |
|                                                 |     |      |     | 1   | 2   | 3   |
| 4                                               | 5   | 6    | 7   | 8   | 9   | 10  |
| 11                                              | 12  | 13   | 14  | 15  | 16  | 17  |
| 18                                              | 19  | 20   | 21  | 22  | 23  | 24  |
| 25                                              | 26  | 27   | 28  | 29  | 30  | 31  |

**Parking restrictions remain in force thru January 19, 2023, (ending January 20) for a final street sweeping (weather permitting).**

| JANUARY 2023 - <i>Monday 1/2 &amp; 1/16 (Holidays)</i> |               |      |     |     |     |     |
|--------------------------------------------------------|---------------|------|-----|-----|-----|-----|
| SUN                                                    | MON           | TUES | WED | THU | FRI | SAT |
| 1                                                      | <del>2</del>  | 3    | 4   | 5   | 6   | 7   |
| 8                                                      | 9             | 10   | 11  | 12  | 13  | 14  |
| 15                                                     | <del>16</del> | 17   | 18  | 19  | 20  | 21  |
| 22                                                     | 23            | 24   | 25  | 26  | 27  | 28  |
| 29                                                     | 30            | 31   |     |     |     |     |

**NO** grass clippings, tree branches, or yard waste are to be placed on the street—this will result in broken equipment and delays.  
**ALL WEATHER CAN AFFECT THE STREET SWEEPING/LEAF COLLECTION SCHEDULE. PARKING RESTRICTIONS END JAN 20, 2023.**