

CERTIFICATE OF LOCATION OF GOVERNMENT CORNER

NORTH 1/4 Corner of Section 7, Township 40, Range 23, 4TH P.M.
STATE OF MINNESOTA, County of KANABEC

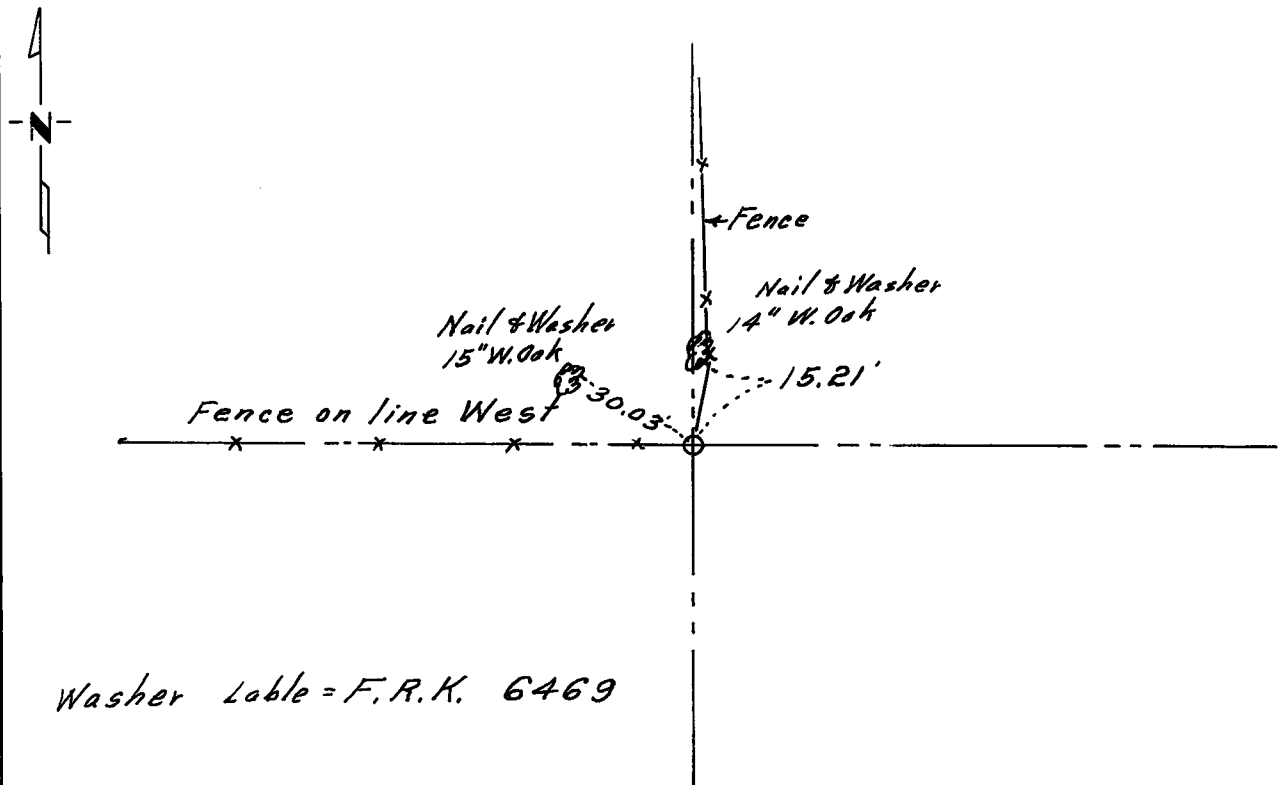
At the corner location shown on the sketch:

On March 13 ¹⁹⁷¹ found a Hole and rust ring
DATE

left monument as found, lowered monument, removed monument (explain)

On March 13, 1971 placed an twisted ornimental iron rod
DATE

SKETCH OF REFERENCE TIES



Statement of evidence relative to this corner location is on back of page.

I hereby certify that this document and the data contained herein was prepared by me or under my direct supervision.

J. R. Kridera Feb. 28, 1972
SIGNATURE DATE

Registration No. 6469

Land Surveyor, Professional Engineer

County Surveyor, County Engineer

OFFICE OF THE REGISTER OF DEEDS

County of Kanabec

I hereby certify that this document was filed in the Reg. of Deeds office at 3:45 P. .M. on the 28 day of February A.D., 1972

Register of Deeds Sandra J. Nelson

By _____, Deputy

DOCUMENT NO. _____

Statement of Evidence:

From ties from Register of Deeds office I was able to locate possible reference trees near fence corner. With careful digging I found rust ring with hole in center.

Original ties

New Side ties

4" W Oak N 15.4'	—————	14" W. Oak 15.21'
8" R Oak S 10 E 6.2'		
6" W Oak S 70 W 21.7		
6" W Oak N 70 W 30.0	—————	15" W. Oak 30.03