

# CERTIFICATE OF LOCATION OF GOVERNMENT CORNER

North Quarter Corner of Section 8, Township 40 North, Range 23 West,  
4th Principal Meridian, Kanabec County, State of Minnesota

At the corner location shown on the sketch:  
On 4/02/2019 set a 7/8" x 24" Rebar monument with Aluminum Cap.

Kanabec County U.S. Survey Feet Coordinates  
NAD 1983, HARN 1996 Adjustment  
Obtained by RTK GPS observation  
Northing: 190192.5827  
Easting: 414527.4985

Note: NAD 1983, HARN 1996 Adjustment  
coordinates are NOT compatible with  
NAD 1983 coordinates

Note: 1 Meter = 3937/1200 U.S. Survey Feet

## SKETCH OF REFERENCE TIES

NOT TO SCALE

DISTANCE UNITS FOR THIS DRAWING IS  
U.S. SURVEY FEET

THE BASIS OF BEARINGS FOR THIS  
DRAWING IS THE KANABEC COUNTY  
COORDINATE SYSTEM BY MNDOT,  
NAD 1983, HARN 1996 ADJUSTMENT



### SECTION 5

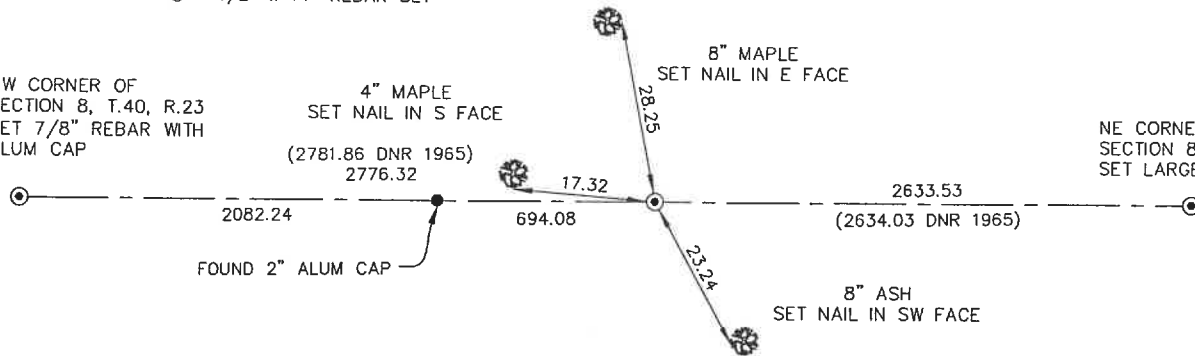
⊗ = 1/2" x 14" REBAR SET

NW CORNER OF  
SECTION 8, T.40, R.23  
SET 7/8" REBAR WITH  
ALUM CAP

4" MAPLE  
SET NAIL IN S FACE  
(2781.86 DNR 1965)  
2776.32

8" MAPLE  
SET NAIL IN E FACE

NE CORNER OF  
SECTION 8, T.40, R.23  
SET LARGE MAG SPIKE



### SECTION 8



**Kroschel Land Surveyors, Inc.**

1639 Main Street North, Suite 6, Pine City, MN 55063  
Phone: 320-629-3267 Fax: 320-629-0176

Statement of evidence relative to this corner location is on back of page.

I hereby certify that this report was prepared by me or under my direct supervision, that the United States public land survey monument record is correct and complete to the best of my knowledge and belief, and that I am a duly Licensed Land Surveyor under the laws of the State of Minnesota.

Tyler J. Kroschel, County Surveyor

1-28-2021  
Date

License No. 44490

### OFFICE OF THE COUNTY RECORDER

County of Kanabec

I hereby certify that this document was filed in the County Recorder's office at \_\_\_\_\_ .M. on the \_\_\_\_\_ day of \_\_\_\_\_ A.D., 20\_\_\_\_

County Recorder \_\_\_\_\_

\_\_\_\_\_, Deputy

DOCUMENT NO. \_\_\_\_\_

Statement of Evidence:

In October of 1851, Deputy Surveyor John Gay set a post to mark the N 1/4 Corner of Section 8 , Township 40 North, Range 23 West, 4th Principal Meridian.

Reference ties were taken to:

- 20 inch Pine at North 19 degrees West a distance of 10 links
- 20 inch Pine at South 42 degrees West a distance of 18 links

All of the original Government corner evidence was searched for. None was found.

1965—MN DNR Surveyor John Tofte, Jr. made a survey of the Whited Wildlife Management Area in the West Half of Section 8. The DNR sent me his section breakdown map dated May 1965 and a survey map of the W 1/2 of E 1/2 of NW 1/4 of Section 8 for Jennie Anderson. The survey map shows a monument set at the NE corner of this tract and a distance of 695.46 feet along the north line of the tract. The section breakdown map also gives dimensions and assumed coordinates for the section corners.

In April 2019, I made a survey around Section 8, Township 40 North, Range 23 West, 4th Principal Meridian for Eric Ewald to locate existing monuments, lines of occupation and establish search areas.

On 4/02/2019 I made a search with a magnetic locator at the northeast corner of the W 1/2 of E 1/2 of NW 1/4 of Section 8. I found a 2" Aluminum Capped monument. I also made a search with a metal locator at the N 1/4 corner of Section 8. No evidence of corner was found. There is an old fence line running east and west at this location. I computed a position on the extension of the NW corner of Section 8 with the found 2" Aluminum Capped monument and at a prorated distance between these two found monuments. This computed location falls 1 foot south of the existing east-west fence and matches the distance to the NE corner of Section 8 within 0.5 feet. I set a 7/8" x 24" Rebar monument at this location and established reference ties. This location was determined to be the best available evidence of the original corner monument location. Assigned Kanabec County Coordinates.



**Kroschel Land Surveyors, Inc.**

1639 Main Street North, Suite 6, Pine City, MN 55063  
Phone: 320-629-3267 Fax: 320-629-0176