

1468

Index No. 447

CERTIFICATE OF LOCATION OF GOVERNMENT CORNER

NORTHEAST Corner of Section 7, Township 40, Range 23, 4th P.M.

STATE OF MINNESOTA, County of KANABEC

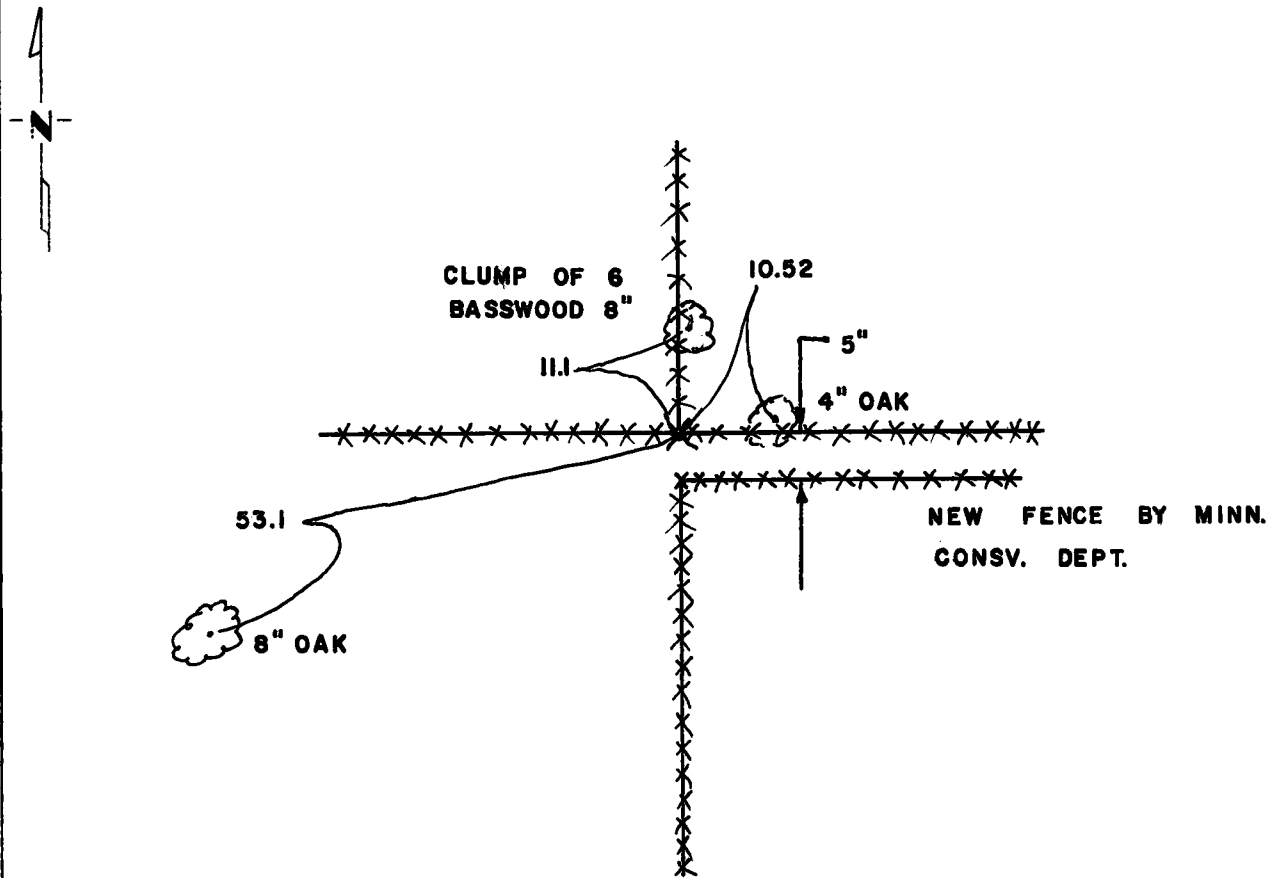
At the corner location shown on the sketch:

On 9-17-75 found a 2" Top, Minn. Conservation Dept. Prop. Corner.
DATE

left monument as found, lowered monument, removed monument (explain)

On _____ placed a _____
DATE

SKETCH OF REFERENCE TIES



Statement of evidence relative to this corner location is on back of page.

I hereby certify that this document and the data contained herein was prepared by me or under my direct supervision.

Donald B. Rude 9-18-75
SIGNATURE DATE

Registration No. 8195

Land Surveyor, Professional Engineer

County Surveyor, County Engineer

OFFICE OF THE REGISTER OF DEEDS

County of Kanabec

I hereby certify that this document was filed in the Reg. of Deeds office at 4:00 P.M. on the 9th day of February A.D., 1976

Register of Deeds Dorinda J. Gaben

By _____, Deputy

DOCUMENT NO. _____

Statement of Evidence:

Found Minnesota State Conservation Department monument which fits old fence lines well.