

CERTIFICATE OF LOCATION OF GOVERNMENT CORNER

East Quarter Corner of Section 7, Township 40 North, Range 23 West,
4th Principal Meridian, Kanabec County, State of Minnesota

At the corner location shown on the sketch:
On 3/27/2019 set a 7/8" x 24" Rebar monument with
Aluminum Cap for a witness. Corner falls in pond.

Kanabec County U.S. Survey Feet Coordinates
NAD 1983, HARN 1996 Adjustment
Obtained by RTK GPS observation
Northing: 187586.6839
Easting: 411787.9686

Note: NAD 1983, HARN 1996 Adjustment
coordinates are NOT compatible with
NAD 1983 coordinates

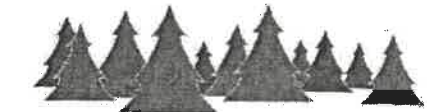
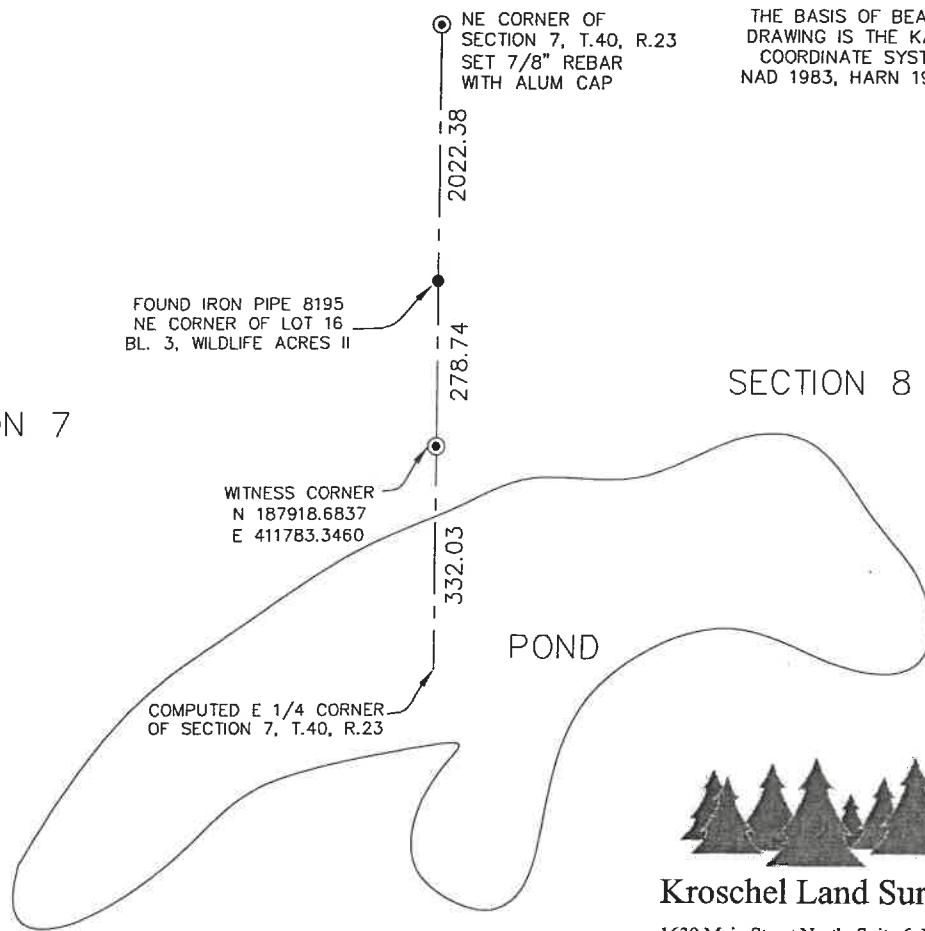
Note: 1 Meter = 3937/1200 U.S. Survey Feet

SKETCH OF REFERENCE TIES

DISTANCE UNITS FOR THIS DRAWING IS
U.S. SURVEY FEET

NOT TO SCALE

THE BASIS OF BEARINGS FOR THIS
DRAWING IS THE KANABEC COUNTY
COORDINATE SYSTEM BY MNDOT,
NAD 1983, HARN 1996 ADJUSTMENT



Kroschel Land Surveyors, Inc.

1639 Main Street North, Suite 6, Pine City, MN 55063
Phone: 320-629-3267 Fax: 320-629-0176

Statement of evidence relative to this corner location is on back of page.

I hereby certify that this report was prepared by me
or under my direct supervision, that the United
States public land survey monument record is
correct and complete to the best of my knowledge
and belief, and that I am a duly Licensed Land
Surveyor under the laws of the State of Minnesota.

Tyler J. Kroschel, County Surveyor

License No. 44490

1-28-2021
Date

OFFICE OF THE COUNTY RECORDER

County of Kanabec

I hereby certify that this document was filed in the
County Recorder's office at _____ .M. on the
_____ day of _____ A.D., 20____

County Recorder _____
_____, Deputy

DOCUMENT NO. _____

Statement of Evidence:

In October of 1851, Deputy Surveyor John Gay set a post to mark a witness to the E 1/4 Corner of Section 7, Township 40 North, Range 23 West, 4th Principal Meridian. The witness post was set 7 chains east of the section line, as the corner fell in a lake.

Reference ties were taken to:

- 12 inch Birch at North 8 degrees East a distance of 14 links
- 20 inch Pine at South 45 degrees West a distance of 30 links

All of the original Government corner evidence was searched for. None was found.

1965—MN DNR Surveyor John Tofte, Jr. made a survey of the Whited Wildlife Management Area in the West Half of Section 8. The DNR sent me his section breakdown map dated May 1965 and a survey map of the N 1/2 of NW 1/4 of SW 1/4 of Section 8 for Robert Anderson. The section breakdown map gives dimensions and assumed coordinates for the section corners. The W 1/4 corner of Section 8 falls in a large pond. The DNR set monuments on the north, south, east and west sides of this pond. I searched for two of these monuments on the north and east sides, but found neither.

1976—County Surveyor M.B. Rude, LS 8195 surveyed the plat of WILDLIFE ACRES II. Rude found the DNR monuments on the north and west sides of the pond. He computed a location by extending the east line of the NE 1/4 of Section 7 south and the east-west quarter line of Section 7.

In April 2019, I made a survey around Section 8, Township 40 North, Range 23 West, 4th Principal Meridian for Eric Ewald to locate existing monuments, lines of occupation and establish search areas.

On 3/27/2019 I made a search with a magnetic locator for the DNR monuments on the north and east sides of the pond. No evidence was found. I also searched for Rude's lot corners along the east line of Section 7 and found a 1/2" Iron Pipe with cap marked LS 8195 at the northeast corner of Lot 16, Block 3, WILDLIFE ACRES II. I computed a position by extending a line from the NE corner of Section 7 through this monument, 610.77 feet south, per the dimensions on Rude's plat. This computed location was determined to be the best available evidence of the original corner location. I set a 7/8" x 24" Rebar monument as a witness to the corner on the east line of Section 7 and 332.03 feet north of the computed corner. Assigned Kanabec County Coordinates.



Kroschel Land Surveyors, Inc.

1639 Main Street North, Suite 6, Pine City, MN 55063
Phone: 320-629-3267 Fax: 320-629-0176