

CERTIFICATE OF LOCATION OF GOVERNMENT CORNER

WITNESS CORNER TO
NORTHEAST Corner of Section 18, Township 40, Range 23, 4TH P.M.

STATE OF MINNESOTA, County of KANABEC

At the corner location shown on the sketch:
ON 9/17/2009 SET A KANABEC COUNTY MONUMENT, ESTABLISHED
KANABEC COUNTY COORDINATES AND TOOK TIES.

Kanabec County U.S. Survey Feet Coordinates
NAD 1983, HARN 1996 Adjustment
Obtained by RTK GPS Observation

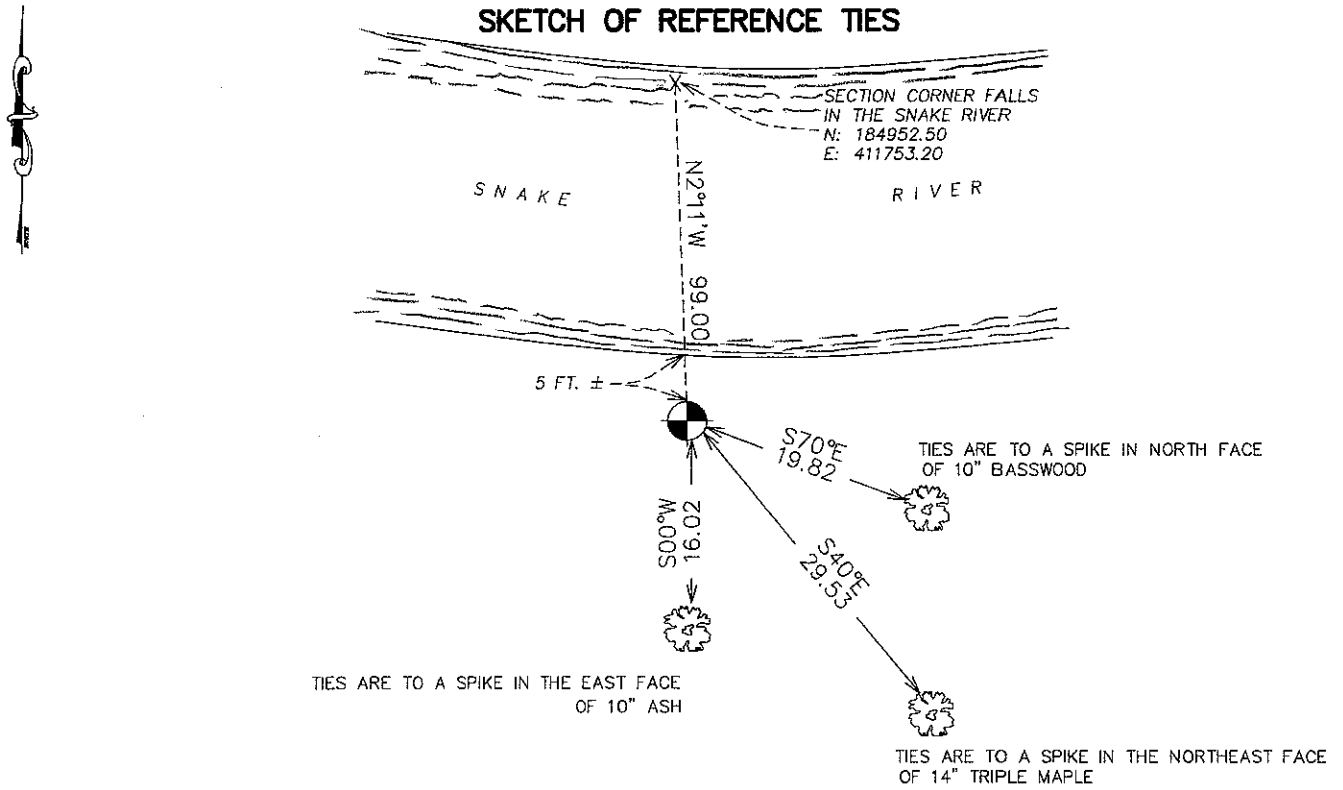
Northing= 184853.60

Easting= 411757.00

Note: NAD 1983, HARN 1996 Adjustment
coordinates are NOT compatible with
NAD 1983 coordinates

Note: 1 Meter=3937/1200 U.S. Survey Feet

SKETCH OF REFERENCE TIES



Statement of evidence relative to this corner location is on back of page.

I hereby certify that this document and the data contained herein was prepared by me or under my direct supervision.

Ernest Alfred
Signature

1-26-2010
Date

Registration No. 9808

Land Surveyor, [] Professional Engineer
[] County Surveyor, [] County Engineer

OFFICE OF THE COUNTY RECORDER

County of _____

I hereby certify that this document was filed in the County Recorder's office at _____ M. on the _____ day of _____ A.D., 20____

County Recorder _____
BY _____ Deputy

DOCUMENT NO. _____

NE CORNER, SEC. 18, T40, R23

STATEMENT OF EVIDENCE

ORIGINAL CORNER WAS ESTABLISHED BY DEPUTY SURVEYOR JOHN M. GLEY ON OCTOBER 4, 1851. THIS CORNER FELL IN THE SNAKE RIVER SO A WITNESS CORNER WAS SET 1.5 CHAINS (99 FEET) SOUTH OF THE TRUE CORNER. THIS FELL ON THE SOUTH BANK OF THE SNAKE RIVER. NO EVIDENCE OF THE WITNESS CORNER OR BEARING TREES REMAIN.

IN OCTOBER 1931, CHARLES HANDSCHU DID A SUBDIVISION OF SECTION 7 AND REESTABLISHED THE NORTH LINE OF SECTION 18. HE SET THE N 1/4 CORNER OF SECTION 18, THE 1/16TH CORNER ON THE NE 1/4 AND A WINESS CORNER ON THE SOUTH BANK OF THE SNAKE RIVER TO THE NORTHEAST CORNER AND TOOK 4 TIES. NO EVIDENCE COULD BE FOUND FOR THE WITNESS CORNER OR THE TIE TREES.

THE N 1/4 CORNER WAS REESTABLISHED BY FRANK KVIDERA IN THE PLAT OF FRANDSEN'S RIVERVIEW. WE FOUND A 1/2" IRON PIPE AT THE 1/16TH CORNER OF THE NE 1/4 OF SECTION 18 AND THIS AGREED WITHIN 0.3 FEET OF KVIDERA'S MEASUREMENT. WE THEN EXTENDED THIS LINE EAST AT A DOUBLED DISTANCE FROM THE 1/2" IRON PIPE. THIS FELL ON THE SOUTH BANK OF THE SNAKE RIVER. A DILIGENT SEARCH AND HAND EXCAVATION WAS DONE AT THIS LOCATION. NO POSTS OR TIES COULD BE RECONSTRUCTED. AN OLD BARBED WIRE FENCE 3"-4" UNDER THE GROUND WAS FOUND RUNNING SOUTH FROM THIS LOCATION. ANOTHER FENCE HAD BEEN PLACED WEST OF THIS FENCE. WE ACCEPTED HANDSCHU'S MEASUREMENT AS THE BEST EVIDENCE FOR THE PERPETUATION OF THIS CORNER.

ON SEPTEMBER 17, 2009 WE SET A KANABEC COUNTY MONUMENT, TOOK TIES AND ESTABLISHED KANABEC COUNTY COORDINATES ON THIS LOCATION. THIS LOCATION ALSO FITS WITHIN 10 FEET OF G.L.O. MEASUREMENT TO THE NE CORNER OF SECTION 16.