

CERTIFICATE OF LOCATION OF GOVERNMENT CORNER

EAST QUARTER Corner of Section 18, Township 40, Range 23, 4TH P.M.

STATE OF MINNESOTA, County of KANABEC

At the corner location shown on the sketch:
 9/17/09 SET KANABEC COUNTY MONUMENT
 AND ESTABLISHED KANABEC CO. COORDINATES AND TIES

Kanabec County U.S. Survey Feet Coordinates
 NAD 1983, HARN 1996 Adjustment
 Obtained by RTK GPS Observation

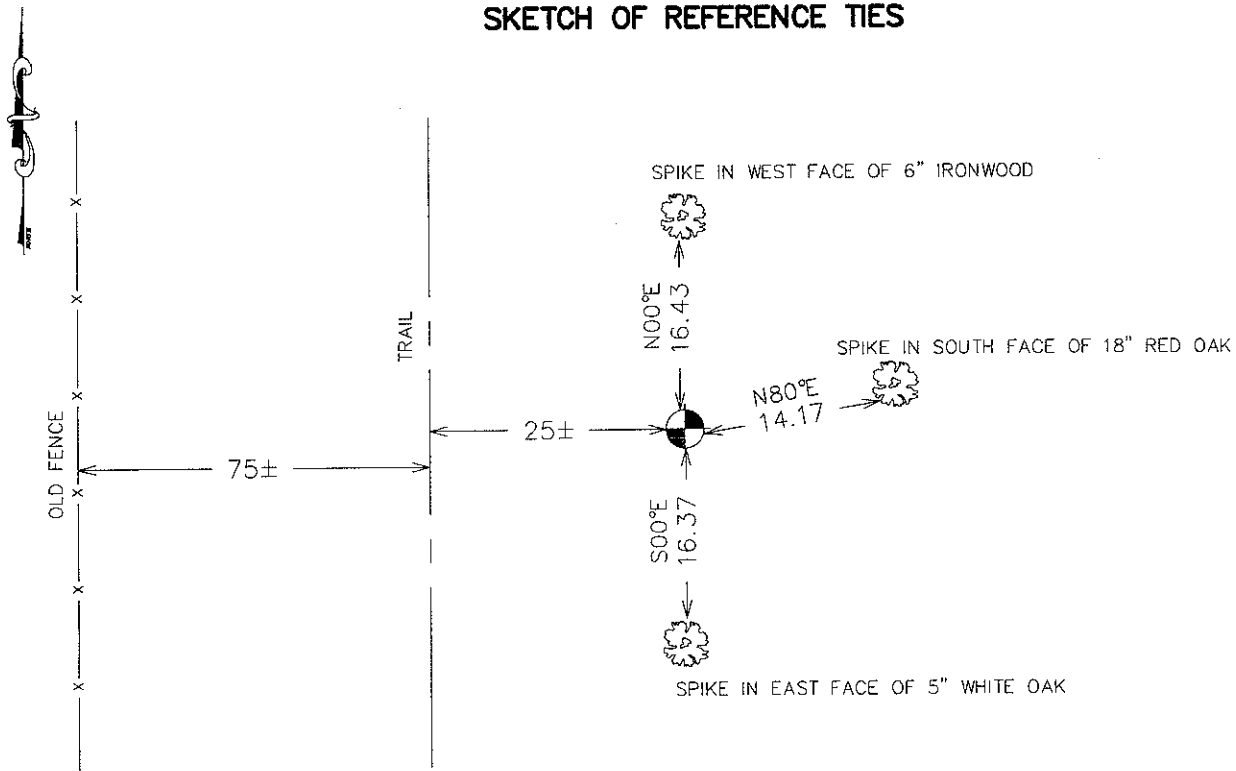
Northing= 182338.880

Easting= 411852.850

Note: NAD 1983, HARN 1996 Adjustment
 coordinates are NOT compatible with
 NAD 1983 coordinates

Note: 1 Meter=3937/1200 U.S. Survey Feet

SKETCH OF REFERENCE TIES



Statement of evidence relative to this corner location is on back of page.

I hereby certify that this document and the data contained herein was prepared by me or under my direct supervision.

Ernest J. Rud
 Signature

1-26-2010
 Date

Registration No. 9808

Land Surveyor, Professional Engineer
 County Surveyor, County Engineer

OFFICE OF THE COUNTY RECORDER

County of _____

I hereby certify that this document was filed in the County Recorder's office at _____ M. on the _____ day of _____ A.D., 20____

County Recorder _____

BY _____ Deputy

DOCUMENT NO. _____

E 1/4 CORNER, SEC. 18, T40, R23

STATEMENT OF EVIDENCE

THE ORIGINAL CORNER WAS SET BY DEPUTY SURVEYOR JOHN M. GLEY ON OCTOBER 4, 1851 AND 2 BEARING TREES ESTABLISHED.

NO EVIDENCE OF THE CORNER OR BEARING TREES COULD BE FOUND.

RESEARCH OF THE COUNTY RECORDS PRODUCED NO EVIDENCE OF SUBSEQUENT SURVEYS.

CONVERSATION WITH HOWARD KADLEC, OWNER OF LAND IN THE NW 1/4 OF SEC. 17 STATED THAT FENCE ALONG THE EAST LINE OF SEC. 18 WAS PUT IN BY JONES 50 YEARS AGO BUT HAD NO IDEA IF FENCE WAS BUILT ON SECTION LINE. WHEN HOWARD'S DAD EXTENDED FENCE SOUTH FROM THIS CORNER, HOWARD BELIEVES HE JUST EXTENDED JONES' FENCE.

WE SET THIS CORNER AT A LOST POSITION ON SEPTEMBER 17, 2009. THIS FALLS 100± FEET EAST OF THE OLD REMNANTS OF A FENCE. A KANABEC CO. MONUMENT WAS SET, TIES TAKEN AND KANABEC CO. COORDINATES ESTABLISHED ON THIS POSITION.