

CERTIFICATE OF LOCATION OF GOVERNMENT CORNER

NORTH QUARTER Corner of Section 19, Township 40, Range 23, 4TH P.M.

STATE OF MINNESOTA, County of KANABEC

At the corner location shown on the sketch:
IN OCTOBER 2005 SET THIS MONUMENT
AND ESTABLISHED G.P.S. COORDINATES ON ITS LOCATION.

Kanabec County U.S. Survey Feet Coordinates
NAD 1983, HARN 1996 Adjustment
Obtained by RTK GPS Observation

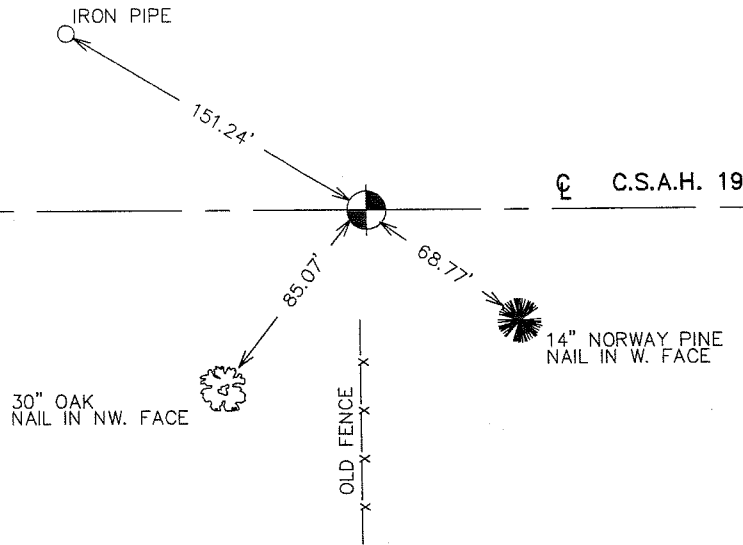
Northing= 179687.53

Easting= 409306.76

Note: NAD 1983, HARN 1996 Adjustment
coordinates are NOT compatible with
NAD 1983 coordinates

Note: 1 Meter=3937/1200 U.S. Survey Feet

SKETCH OF REFERENCE TIES



Statement of evidence relative to this corner location is on back of page.

I hereby certify that this document and the data contained herein was prepared by me or under my direct supervision.

Ernest [Signature]
Signature

1-23-2006
Date

OFFICE OF THE COUNTY RECORDER

County of _____

I hereby certify that this document was filed in the County Recorder's office at _____ M. on the _____ day of _____ A.D., 20____

County Recorder _____

BY _____ Deputy

BY _____ Deputy

DOCUMENT NO. _____

Registration No. Minn No 9808

Land Surveyor, [] Professional Engineer

[] County Surveyor, [] County Engineer

STATEMENT OF EVIDENCE

ALL OF THE ORIGINAL BEARING TREES ARE NOW GONE.

THERE IS NO RESURVEY DATA ON FILE FOR THIS CORNER.

IN AUGUST OF 1981, M.B. RUDE RAN A SURVEY ALONG THE NORTH LINE OF SECTIONS 19 AND 20 AND LOCATED THE EXISTING LINES OF OCCUPATION.

THIS CORNER IS AT AN EAST-WEST ROAD AND FENCE LINE SOUTH.

ON AUGUST 4TH, 1981 AN EXCAVATION WAS MADE WITH THE COUNTY BACKHOE AT THIS LOCATION. THE EXCAVATION WAS 15 FEET SQUARE, 3 FEET DEEP. NO EVIDENCE WAS FOUND IN THE EXCAVATION.

WE ACCEPTED THE CENTER OF THE EAST-WEST ROAD AND FENCE LINE SOUTH AS THE BEST AVAILABLE EVIDENCE OF THE ORIGINAL CORNER LOCATION AND SET A 4" BY 17" CAST IRON MONUMENT AT THIS CORNER.

ALL REFERENCE TIES WERE INTACT.

THE ROADWAY WAS REGRADED IN 1992, THE COUNTY HIGHWAY DEPARTMENT LOCATED THE QUARTER CORNER PRIOR TO CONSTRUCTION AND PLACED ADDITIONAL REFERENCES OUTSIDE OF THE NEW CONSTRUCTION LIMITS.

BEFORE THE ROADWAY WAS PAVED THE CORNER WAS RE-ESTABLISHED ACCORDING TO REFERENCES OBTAINED PREVIOUSLY. ADDITIONAL REFERENCES WERE ALSO PLACED.

IN OCTOBER 2005 E.G. RUD REESTABLISHED THIS CORNER USING EXISTING TIES AND MATHEMATICAL INFORMATION FROM M.B. RUDE. A MONUMENT WAS PLACED FLUSH WITH THE BITUMINOUS AND KANABEC COUNTY COORDINATES WERE ESTABLISHED ON THIS POSITION USING G.P.S. EQUIPMENT.