

CERTIFICATE OF LOCATION OF GOVERNMENT CORNER

NORTH QUARTER Corner of Section 20, Township 40, Range 23, 4TH P.M.

STATE OF MINNESOTA, County of KANABEC

At the corner location shown on the sketch:
IN OCTOBER 2005 RELOCATED MONUMENT
AND ESTABLISHED G.P.S. COORDINTES ON THE LOCATION.

Kanabec County U.S. Survey Feet Coordinates
NAD 1983, HARN 1996 Adjustment
Obtained by RTK GPS Observation

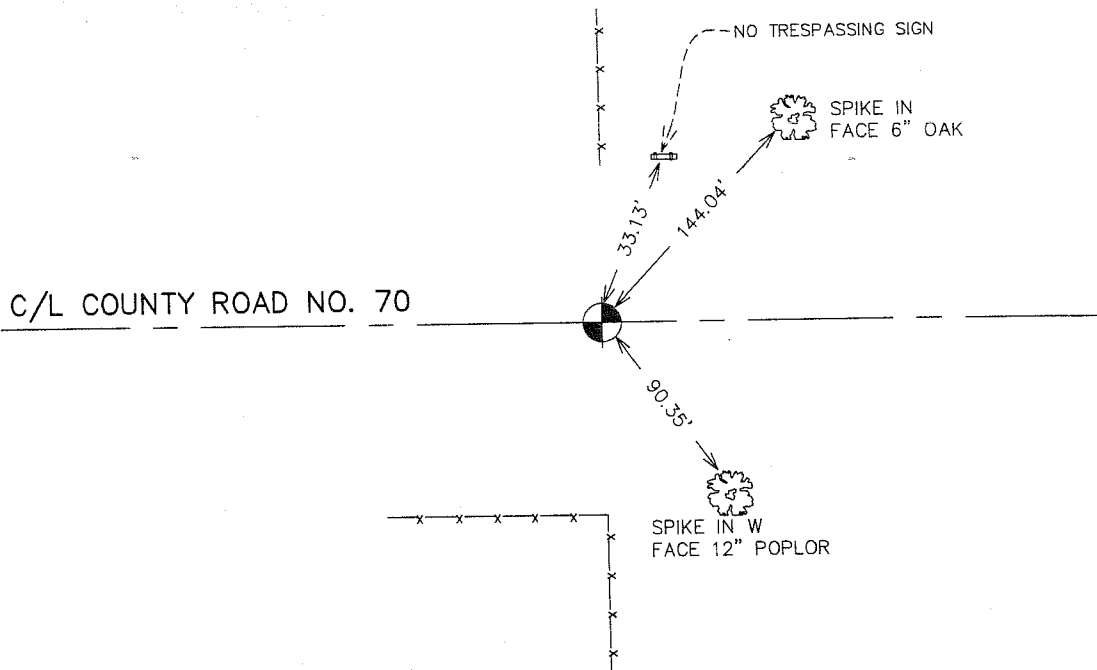
Northing= 179708.70

Easting= 414571.49

Note: NAD 1983, HARN 1996 Adjustment
coordinates are NOT compatible with
NAD 1983 coordinates

Note: 1 Meter=3937/1200 U.S. Survey Feet

SKETCH OF REFERENCE TIES



Statement of evidence relative to this corner location is on back of page.

I hereby certify that this document and the data contained herein was prepared by me or under my direct supervision.

Ernest L. Reed
Signature

1-23-2006
Date

Registration No. Miss No 9808

Land Surveyor, Professional Engineer

County Surveyor, County Engineer

OFFICE OF THE COUNTY RECORDER

County of _____

I hereby certify that this document was filed in the County Recorder's office at _____ M. on the _____ day of _____ A.D., 20_____

County Recorder _____

BY _____ Deputy

DOCUMENT NO. _____

STATEMENT OF EVIDENCE:

ALL OF THE ORIGINAL BEARING TREES ARE NOW GONE.

THERE IS A SURVEY ON FILE BY THOMAS VICAIRY, DATED IN THE 1900'S AT THE COUNTY RECORDERS OFFICE WHICH STATES HE SET STAKES AT ALL OF THE CORNERS.

IN AUGUST OF 1981, M.B. RUDE RAN A SURVEY ALONG THE NORTH LINE OF SECTIONS 19 AND 20 AND LOCATED THE EXISTING LINES OF OCCUPATION.

THIS CORNER IS AT AN EAST-WEST ROAD AND FENCE LINES NORTH AND SOUTH.

ON AUGUST 4, 1981, AN EXCAVATION WAS MADE WITH THE COUNTY BACKHOE AT THIS LOCATION. THE EXCAVATION WAS 15 FEET SQUARE, 2.5 FEET DEEP. NO EVIDENCE WAS FOUND IN THE EXCAVATION, IT APPEARS THE ROAD WAS CUT AND ALL THE EVIDENCE WAS REMOVED IN ROAD CONSTRUCTION.

THE CENTER OF THE EAST-WEST ROAD AND FENCE LINES NORTH AND SOUTH WERE ACCEPTED AS THE BEST AVAILABLE EVIDENCE OF THE ORIGINAL CORNER LOCATION AND SET A 4" BY 17" CAST IRON MONUMENT AT THIS LOCATION.

ALL REFERENCES WERE INTACT.

THE ROADWAY WAS REGARDED IN 1992. WE LOCATED THE QUARTER CORNER PRIOR TO CONSTRUCTION AND PLACED ADDITIONAL REFERENCES OUTSIDE OF THE NEW CONSTRUCTION LIMITS.

BEFORE THE ROADWAY WAS PAVED, THE CORNER WAS REESTABLISHED ACCORDING TO REFERENCES OBTAINED PREVIOUSLY. ADDITIONAL REFERENCES WERE ALSO PLACED.

IN OCTOBER 2005 E.G. RUD RELOCATED THIS CORNER AND ESTABLISHED KANABEC COUNTY COORDINATES ON THIS POSITION USING G.P.S. EQUIPMENT.