

CERTIFICATE OF LOCATION OF GOVERNMENT CORNER

NORTHEAST Corner of Section 19, Township 40, Range 23, 4TH P.M.

STATE OF MINNESOTA, County of KANABEC

At the corner location shown on the sketch:
IN OCTOBER 2005 FOUND THIS MONUMENT
AND ESTABLISHED G.P.S. COORDINATES ON ITS LOCATION.

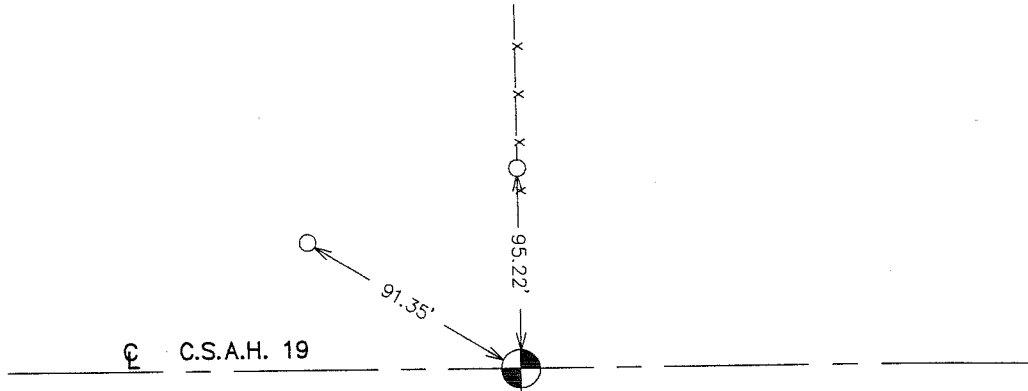
Kanabec County U.S. Survey Feet Coordinates
NAD 1983, HARN 1996 Adjustment
Obtained by RTK GPS Observation

Northing= 179725.26
Easting= 411952.47

Note: NAD 1983, HARN 1996 Adjustment
coordinates are NOT compatible with
NAD 1983 coordinates

Note: 1 Meter=3937/1200 U.S. Survey Feet

SKETCH OF REFERENCE TIES



Statement of evidence relative to this corner location is on back of page.

I hereby certify that this document and the data contained herein was prepared by me or under my direct supervision.

Erest Rud
Signature

1-23-2006
Date

Registration No. Minn No 9808

Land Surveyor, Professional Engineer

County Surveyor, County Engineer

OFFICE OF THE COUNTY RECORDER

County of _____

I hereby certify that this document was filed in the County Recorder's office at _____ M. on the

_____ day of _____ A.D., 20____

County Recorder _____

BY _____ Deputy

DOCUMENT NO. _____

STATEMENT OF EVIDENCE

ALL OF THE ORIGINAL BEARING TREES ARE NOW GONE.

THERE IS A SURVEY ON FILE BY THOMAS VICAIRY, DATED 1900, AT THE COUNTY RECORDERS OFFICE WHICH STATES HE SET STAKES AT ALL OF THE CORNERS.

IN AUGUST 1981, M.B. RUDE RAN A SURVEY ALONG THE NORTH LINES OF SECTIONS 19 AND 20 AND LOCATED THE EXISTING LINES OF OCCUPATION.

THIS CORNER FALLS ON AN EAST-WEST ROAD AND THERE ARE NO LINES OF OCCUPATION NORTH OR SOUTH.

ON AUGUST 4, 1981 AN EXCAVATION WAS MADE WITH THE COUNTY BACKHOE AND AT 1 FOOT BELOW THE SURFACE WE FOUND THE REMAINS OF A VERY ROTTEN POST.

M.B. RUDE ACCEPTED THIS POST AS THE ONE SET BY THOMAS VICCAIRY IN 1900 AND SET A 4" BY 17" CAST IRON MONUMENT TO REPLACE THE POST.

ALL REFERENCE TIES WERE INTACT.

THE ROADWAY WAS REGRADED IN 1992, KANABEC COUNTY HIGHWAY DEPARTMENT LOCATED THE SECTION CORNER PRIOR TO CONSTRUCTION AND PLACED ADDITIONAL REFERENCES OUTSIDE OF THE NEW CONSTRUCTION LIMITS.

BEFORE THE ROADWAY WAS PAVED THE CORNER WAS RE-ESTABLISHED ACCORDING TO REFERENCES OBTAINED PREVIOUSLY. ADDITIONAL REFERENCES WERE ALSO PLACED.

IN MARCH 2005 E.G. RUD AND SONS FOUND THIS MONUMENT AND ESTABLISHED KANABEC COUNTY COORDINATES ON THIS POSITION USING G.P.S. EQUIPMENT.