

CERTIFICATE OF LOCATION OF GOVERNMENT CORNER

EAST QUARTER Corner of Section 19, Township 40, Range 23 4TH P.M.
STATE OF MINNESOTA, County of KANABEC

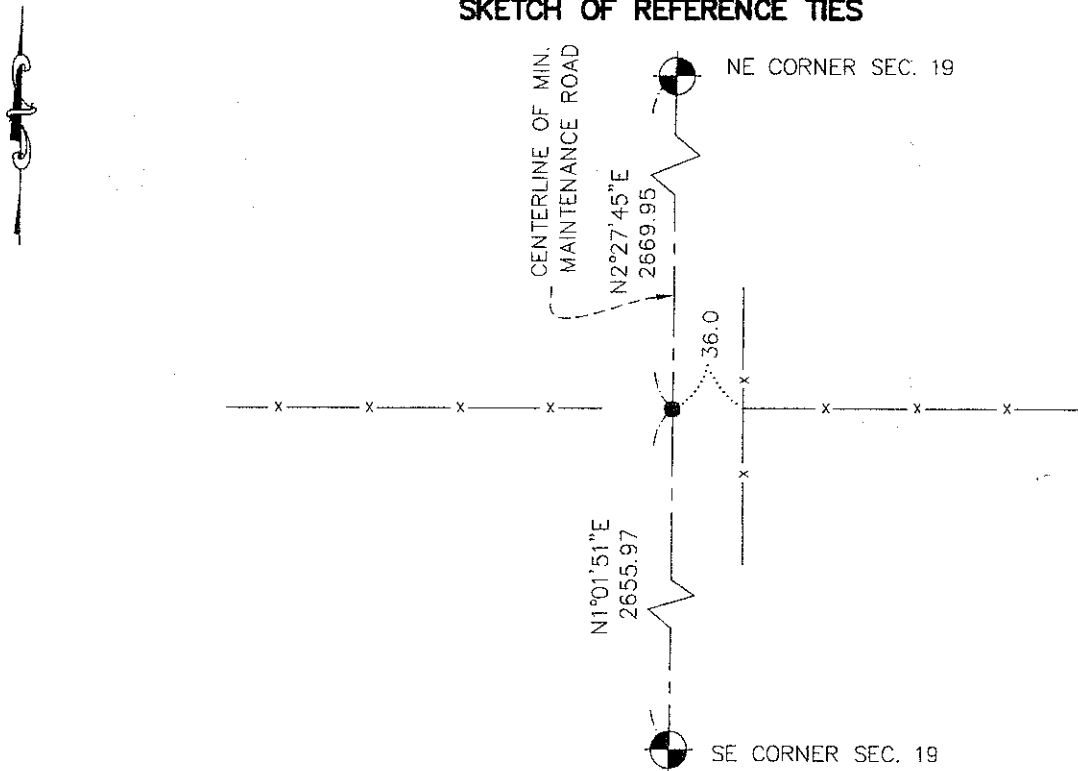
At the corner location shown on the sketch:
5/4/2008, SET 1/2 INCH IRON PIPE

Kanabec County U.S. Survey Feet Coordinates
NAD 1983, HARN 1996 Adjustment
Obtained by RTK GPS Observation

Northing= 177057.78
Easting= 411837.75

Note: NAD 1983, HARN 1996 Adjustment
coordinates are NOT compatible with
NAD 1983 coordinates
Note: 1 Meter=3937/1200 U.S. Survey Feet

SKETCH OF REFERENCE TIES



Statement of evidence relative to this corner location is on back of page.

I hereby certify that this document and the data contained herein was prepared by me or under my direct supervision.

Ernest J. Paul 3-17-2009
Signature Date

Registration No. Minn No. 9808

Land Surveyor, Professional Engineer
 County Surveyor, County Engineer

OFFICE OF THE COUNTY RECORDER

County of _____
I hereby certify that this document was filed in the County Recorder's office at _____ M. on the _____ day of _____ A.D., 20 _____

County Recorder _____
BY _____ Deputy

DOCUMENT NO. _____

EAST QUARTER CORNER SECTION 19, TOWNSHIP 40, RANGE 23,
4TH PRINCIPAL MERIDIAN, KANABEC COUNTY, MN

STATEMENT OF EVIDENCE

THE ORIGINAL CORNER POST WAS SET OCT. 6, 1851 BY DEPUTY SURVEYOR JOHN M. GLEY AND A BLACK OAK AND MAPLE WERE ESTABLISHED AS BEARING TREES. NO VISIBLE EVIDENCE REMAINS FOR THE CORNER OR THE BEARING TREE.

THERE IS A ROAD OPENING DATED NOV. 1917 FROM THE EAST QUARTER OF SEC. 19 TO THE NE CORNER OF SEC 19. THERE IS A MINIMUM MAINTENANCE ROAD RUNNING NORTH FROM THE SOUTHEAST CORNER OF SECTION 19 TO THE SNAKE RIVER. ON PAGE 256 OF BOOK A OF SURVEYS A SURVEY OF SEC. 20 IS RECORDED DATED MARCH 10, 1900 BY THOMAS B. VICKEREY. VICKEREY DOES NOT STATE WHAT IF ANYTHING WAS FOUND OR SET AT THIS QUARTER CORNER.

ON MAY 4, 2009 E.G. RUD AND SONS RAN A SURVEY FROM THE SE CORNER TO THE NE CORNER OF SEC. 19. THERE IS A FENCE LINE RUNNING EAST AND WEST FROM THE APPROXIMATE LOCATION OF THIS QUARTER CORNER. THIS FENCE IS 7 FEET SOUTH FROM BEING EQUIDISTANT FROM THE NE AND SE CORNERS OF SEC. 19. WE ACCEPT THE CENTERLINE OF THE ROAD AND THE FENCE INTERSECTION AS THE BEST EVIDENCE FOR THE PERPETUATION OF THIS CORNER. A KANABEC COUNTY MONUMENT WAS SET AND KANABEC COUNTY COORDINATES ESTABLISHED ON THIS POSITION USING G.P.S. EQUIPMENT