

# CERTIFICATE OF LOCATION OF GOVERNMENT CORNER

SOUTH QUARTER Corner of Section 30, Township 40, Range 23, 4TH P.M.  
STATE OF MINNESOTA, County of KANABEC

At the corner location shown on the sketch:

11/30/09 FOUND KANABEC COUNTY MONUMENT AND ESTABLISHED G.P.S. COORDINATES ON THE LOCATION

Kanabec County U.S. Survey Feet Coordinates  
NAD 1983, HARN 1996 Adjustment  
Obtained by RTK GPS Observation

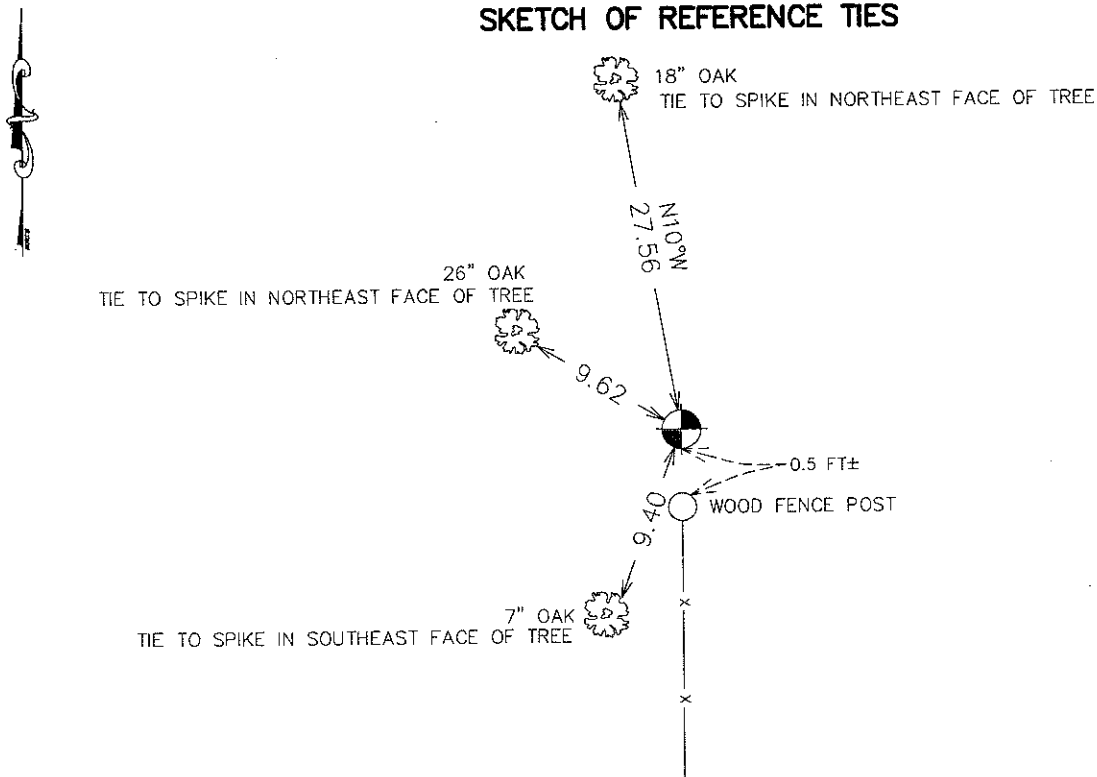
Northing= 169130.783

Easting= 409173.201

Note: NAD 1983, HARN 1996 Adjustment coordinates are NOT compatible with NAD 1983 coordinates

Note: 1 Meter=3937/1200 U.S. Survey Feet

## SKETCH OF REFERENCE TIES



Statement of evidence relative to this corner location is on back of page.

I hereby certify that this document and the data contained herein was prepared by me or under my direct supervision.

Ernest J. Rud  
Signature

2-20-2010  
Date

Registration No. 9808

- Land Surveyor,     Professional Engineer  
 County Surveyor,     County Engineer

## OFFICE OF THE COUNTY RECORDER

County of \_\_\_\_\_

I hereby certify that this document was filed in the County Recorder's office at \_\_\_\_\_ M. on the \_\_\_\_\_ day of \_\_\_\_\_ A.D., 20\_\_\_\_

County Recorder \_\_\_\_\_

BY \_\_\_\_\_ Deputy

DOCUMENT NO. \_\_\_\_\_

S 1/4 CORNER, SEC 30, T40, R23

**STATEMENT OF EVIDENCE**

THE ORIGINAL CORNER POST WAS SET BY DEPUTY SURVEYOR JOHN M. GLEY ON OCTOBER 3, 1851 AND BEARING TREES NOTED: 16" OAK (N79°E A DISTANCE OF 45 LINKS) AND 8" OAK (S80°E A DISTANCE OF 50 LINKS). NO REMAINING EVIDENCE FOR THIS CORNER OR BEARING TREES REMAIN TODAY.

IN BOOK A OF SURVEYS, PAGE 254 IS A RECORDED SURVEY BY THOMAS VICKERY OF SEC. 30 DATED JANUARY 20, 1900. HE DOESN'T STATE WHAT HE SET FOR THIS CORNER.

ON JULY 26, 1973, LeROY WINNER SET A CAST ALUMINUM MONUMENT AT THE INTERSECTION OF 4 FENCES WHILE DOING A SURVEY IN SEC. 30. THIS WAS IN AGREEMENT WITH THE LINES OF OCCUPATION AND DISTANCES TO THE ADJACENT CORNERS.

ON NOVEMBER 30, 2009, E.G. RUD AND SONS LOCATED THIS MONUMENT, TOOK NEW TIES AND ESTABLISHED KANABEC COUNTY COORDINATES ON THIS POSITION.