

CERTIFICATE OF LOCATION OF GOVERNMENT CORNER

NORTH QUARTER Corner of Section 32, Township 40, Range 23, 4TH P.M.

STATE OF MINNESOTA, County of KANABEC

At the corner location shown on the sketch:
11/30/09 SET KANABEC COUNTY MONUMENT

Kanabec County U.S. Survey Feet Coordinates
NAD 1983, HARN 1996 Adjustment
Obtained by RTK GPS Observation

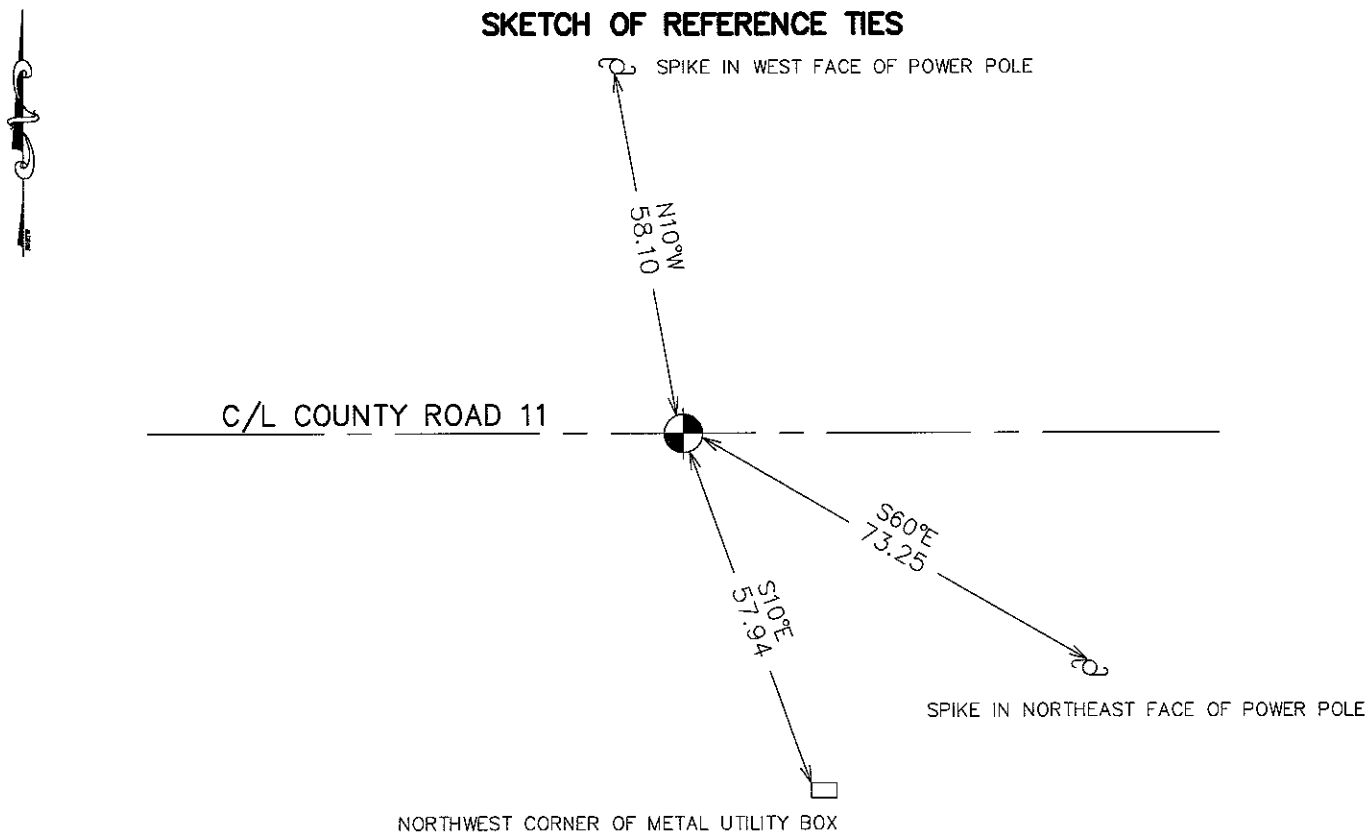
Northing= 169107.380

Easting= 414466.000

Note: NAD 1983, HARN 1996 Adjustment
coordinates are NOT compatible with
NAD 1983 coordinates

Note: 1 Meter=3937/1200 U.S. Survey Feet

SKETCH OF REFERENCE TIES



Statement of evidence relative to this corner location is on back of page.

I hereby certify that this document and the data contained herein was prepared by me or under my direct supervision.

Ernest Alred
Signature

1-26-2010
Date

Registration No. 9808

Land Surveyor, [] Professional Engineer

[] County Surveyor, [] County Engineer

OFFICE OF THE COUNTY RECORDER

County of _____

I hereby certify that this document was filed in the County Recorder's office at _____ M. on the _____ day of _____ A.D., 20__

County Recorder _____

BY _____ Deputy

DOCUMENT NO. _____

N 1/4 CORNER, SEC. 32, T40, R23

STATEMENT OF EVIDENCE

THE ORIGINAL GOVERNMENT POST WAS SET ON OCTOBER 3, 1851 BY DEPUTY SURVEYOR JOHN M. GLEY. AN 18" PINE AND 6" ASPEN WERE NOTED AS BEARING TREES.

NO EVIDENCE OF THE CORNER OR BEARING TREES IS VISIBLE TODAY. IN NOVEMBER 1898 VICKERY RAN A SURVEY AROUND SECTION 32 BUT IT DOESN'T STATE THAT ANY CORNERS WERE SET OR LOCATED. VICKERY MEASURED 80.24 CHAINS (5295.84 FT). TODAY WE MEASURED 5297.52 FT.

IN 2002, DALE ANDERSON DID A SURVEY IN SECTION 29 AND SET A PK NAIL IN THE CENTERLINE OF COUNTY RD 11 ON THE SOUTHERLY EXTENSION OF A FENCE LINE RUNNING NORTH.

IN 2005 E.G. RUD AND SONS OFFSET THIS PK NAIL AND MADE AN EXCAVATION, BUT NO EVIDENCE COULD BE FOUND FOR THE CORNER. THEREFORE THE CENTERLINE OF THE ROAD AND THE EXTENSION OF THE FENCE LINE WERE CONSIDERED TO BE THE BEST EVIDENCE FOR THE PERPETUATION OF THIS CORNER.

IN NOVEMBER 2005 A TEMPORARY MONUMENT WAS SET AND KANABEC COUNTY COORDINATES WERE ESTABLISHED ON THIS CORNER.

ON NOVEMBER 30, 2009, AFTER COUNTY RD 11 WAS REBUILT, A KANABEC COUNTY MONUMENT WAS SET AT THIS LOCATION AND NEW TIES TAKEN.