

# CERTIFICATE OF LOCATION OF GOVERNMENT CORNER

EAST QUARTER Corner of Section 31, Township 40, Range 23, 4TH P.M.

STATE OF MINNESOTA, County of KANABEC

At the corner location shown on the sketch:

SET REBAR AND ESTABLISHED  
G.P.S. COORDINATES ON THE LOCATION

Kanabec County U.S. Survey Feet Coordinates  
NAD 1983, HARN 1996 Adjustment  
Obtained by RTK GPS Observation

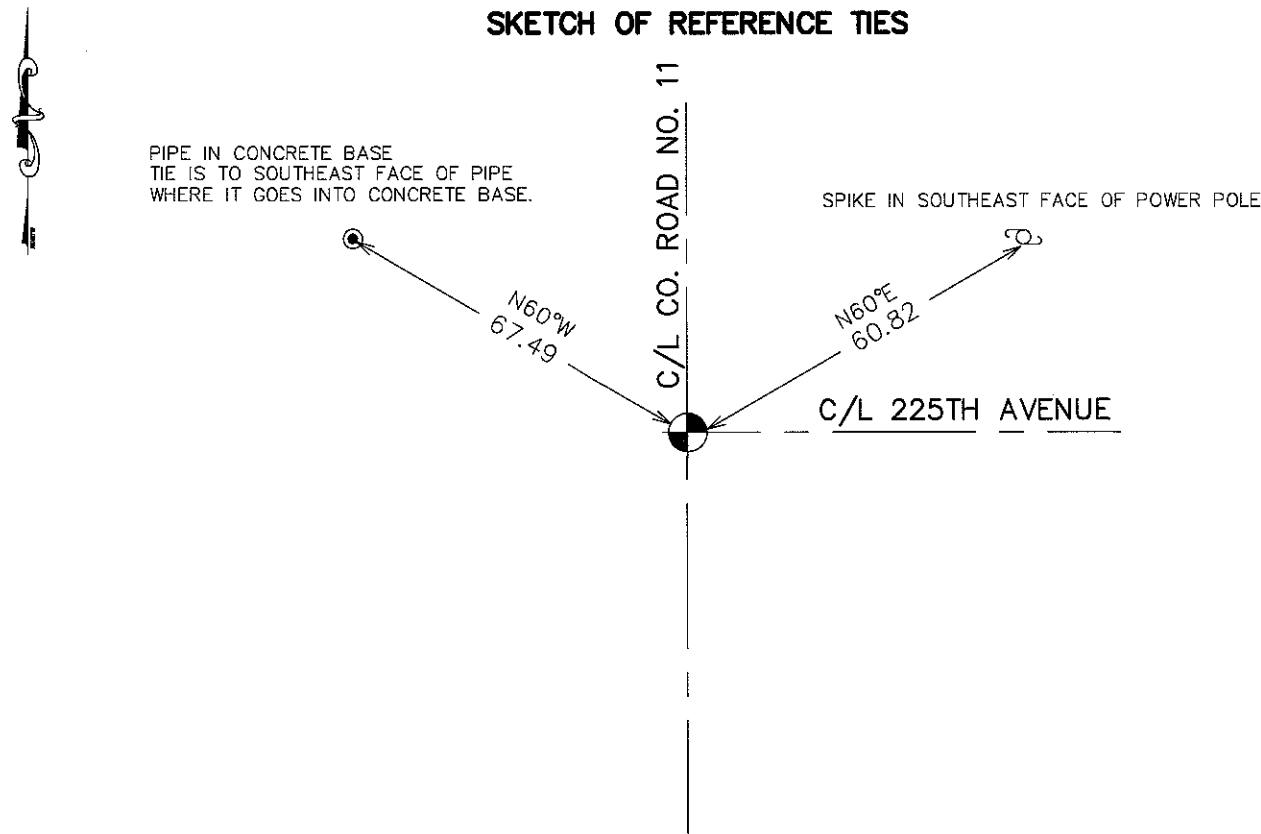
Northing= 166490.54

Easting= 411900.65

Note: NAD 1983, HARN 1996 Adjustment  
coordinates are NOT compatible with  
NAD 1983 coordinates

Note: 1 Meter=3937/1200 U.S. Survey Feet

### SKETCH OF REFERENCE TIES



Statement of evidence relative to this corner location is on back of page.

I hereby certify that this document and the data  
contained herein was prepared by me or under  
my direct supervision.

*Ernest J. Rud*  
Signature

1-26-2010  
Date

Registration No. 9808

Land Surveyor,  Professional Engineer

County Surveyor,  County Engineer

### OFFICE OF THE COUNTY RECORDER

County of \_\_\_\_\_

I hereby certify that this document was filed in  
the County Recorder's office at \_\_\_\_\_ M. on the

\_\_\_\_\_ day of \_\_\_\_\_ A.D., 20\_\_\_\_

County Recorder \_\_\_\_\_

BY \_\_\_\_\_ Deputy

DOCUMENT NO. \_\_\_\_\_

E 1/4 CORNER SEC. 31, T40, R23

**STATEMENT OF EVIDENCE**

THE ORIGINAL CORNER WAS SET AND TIES TAKEN BY GOVERNMENT SURVEYOR JOHN M. GLEY IN SEPTEMBER 1851. THERE IS NO REMAINING EVIDENCE FOR THIS CORNER OR BEARING TREES.

IN OCTOBER 2005 E.G. RUD RAN A SURVEY AROUND SECTION 32 TO LOCATE EXISTING MONUMENTATION AND LINES OF OCCUPATION.

ON OCTOBER 14, 2005 THE KANABEC COUNTY HIGHWAY DEPARTMENT MADE AN EXCAVATION AT THE CENTERLINE OF COUNTY ROAD 11 AND A GRAVEL ROAD GOING EAST. AT THE SURFACE A 1/2" IRON PIPE WAS LOCATED. THIS PIPE WAS TIED OUT AND CONTINUED EXCAVATION.

THE COUNTY FOUND NO EVIDENCE IN THE EXCAVATION WHICH WAS 10' BY 20' BY 6' DEEP, AND APPROXIMATELY 1-2 FEET INTO NATURAL GROUND.

WE ACCEPTED THE 1/2" IRON PIPE AS THE PERPETUATED LOCATION FOR THIS GOVERNMENT CORNER. WE ESTABLISHED KANABEC COUNTY COORDINATES USING G.P.S. EQUIPMENT.

IN NOVEMBER 2009, AFTER COUNTY RD 11 WAS RECONSTRUCTED A NEW MONUMENT WAS SET AND NEW TIES WERE TAKEN