

CERTIFICATE OF LOCATION OF GOVERNMENT CORNER

East Quarter Corner of Section 8, Township 40 North, Range 23 West,
4th Principal Meridian, Kanabec County, State of Minnesota

At the corner location shown on the sketch:
On 4/02/2019 set a large Mag Spike monument in blacktop road surface.

Kanabec County U.S. Survey Feet Coordinates
NAD 1983, HARN 1996 Adjustment
Obtained by RTK GPS observation
Northing: 187572.8145
Easting: 417136.8903

Note: NAD 1983, HARN 1996 Adjustment
coordinates are NOT compatible with
NAD 1983 coordinates
Note: 1 Meter = 3937/1200 U.S. Survey Feet

SKETCH OF REFERENCE TIES

NOT TO SCALE

DISTANCE UNITS FOR THIS DRAWING IS
U.S. SURVEY FEET

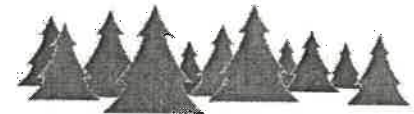
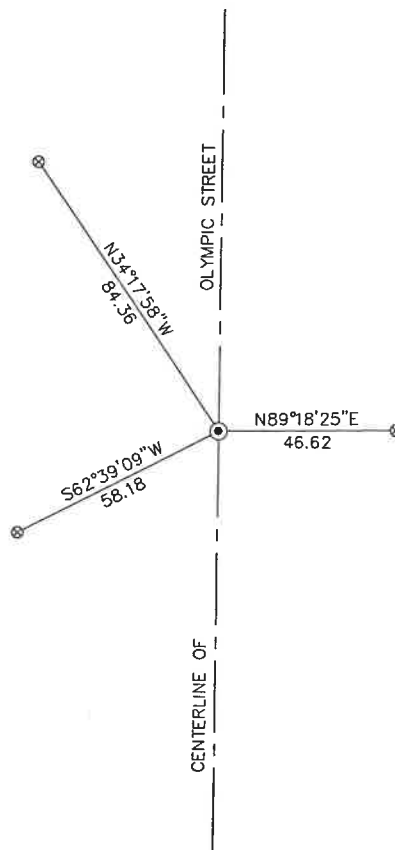
THE BASIS OF BEARINGS FOR THIS
DRAWING IS THE KANABEC COUNTY
COORDINATE SYSTEM BY MNDOT,
NAD 1983, HARN 1996 ADJUSTMENT



⊗ = 1/2" x 14" REBAR SET

SECTION 8

SECTION 9



Kroschel Land Surveyors, Inc.

1639 Main Street North, Suite 6, Pine City, MN 55063
Phone: 320-629-3267 Fax: 320-629-0176

Statement of evidence relative to this corner location is on back of page.

I hereby certify that this report was prepared by me or under my direct supervision, that the United States public land survey monument record is correct and complete to the best of my knowledge and belief, and that I am a duly Licensed Land Surveyor under the laws of the State of Minnesota.


Tyler J. Kroschel, County Surveyor

1-27-2021
Date

License No. 44490

OFFICE OF THE COUNTY RECORDER
County of Kanabec

I hereby certify that this document was filed in the County Recorder's office at _____ .M. on the _____ day of _____ A.D., 20____

County Recorder _____, Deputy

DOCUMENT NO. _____

Statement of Evidence:

In October of 1851, Deputy Surveyor John Gay set a post to mark the E 1/4 Corner of Section 8 , Township 40 North, Range 23 West, 4th Principal Meridian.

Reference ties were taken to:

- 8 inch Pine at North 85 degrees West a distance of 38 links
- 10 inch Maple at North 73 degrees East a distance of 15 links

All of the original Government corner evidence was searched for. None was found.

1912--County Surveyor John Nelson made a survey of Section 9, per the records of the Kanabec County Highway Department. He set a Sandstone monument for the W 1/4 corner of Section 9. He gives a dimension of 39.65 chains (2616.9 feet) to the NW and SW corners of Section 9.

1965±--Kanabec County Highway Department construction plans for County Highway No. 11 do not show a location for the E 1/4 corner of Section 8. Highway Easements taken describe the E 1/4 corner of Section 8 on the new centerline of County Highway No. 11.

1965--MN DNR Surveyor John Tofte, Jr. made a survey of the Whited Wildlife Management Area in the West Half of Section 8. The DNR sent me his section breakdown map dated May 1965. This shows the assumed E 1/4 corner of Section 8 at the intersection of roads N, S, and a fence west. This gives a distance of 2617.8 feet to the SE corner of Section 8 and a distance of 2621.3 to the NE corner of Section 8. The breakdown also gives assumed coordinates for the section corners.

In April 2019, I made a survey around Section 8, Township 40 North, Range 23 West, 4th Principal Meridian for Eric Ewald to locate existing monuments, lines of occupation and establish search areas.

On 4/02/2019 I made a search with a magnetic locator at centerline of County Highway No. 11 and halfway between the NE and SE corners of Section 8. No evidence of corner was found. I also searched for a fence line to the west, but no evidence was found. I had previously located section corners 1/2 mile to the north and 1/2 mile to the south of this corner. I computed a position on-line and halfway between the NE and SE corners of Section 8. This computed location falls on the centerline of County Highway No. 11. I determined the corner lost and set a large Mag Spike in the blacktop surface at this computed corner location. This location was determined to be the best available evidence of the original corner monument location. Established reference ties and assigned Kanabec County Coordinates.

The corner falls on the blacktop surface of the highway. No excavation was made at this location. The Highway plans show a small subcut in this area. The sandstone monument was probably removed in construction of the highway.



Kroschel Land Surveyors, Inc.

1639 Main Street North, Suite 6, Pine City, MN 55063
Phone: 320-629-3267 Fax: 320-629-0176