

CERTIFICATE OF LOCATION OF GOVERNMENT CORNER

NE Corner of Section 17, Township 40 North, Range 23 West,
4th Principal Meridian, Kanabec County, State of Minnesota

At the corner location shown on the sketch:
On 4/02/2019 set a 1/2" x 14" rebar monument with plastic cap marked KROSCHEL 44490.

Kanabec County U.S. Survey Feet Coordinates
NAD 1983, HARN 1996 Adjustment
Obtained by RTK GPS observation
Northing: 184961.6472
Easting: 417112.9794

Note: NAD 1983, HARN 1996 Adjustment coordinates are NOT compatible with NAD 1983 coordinates

Note: 1 Meter = 3937/1200 U.S. Survey Feet

SKETCH OF REFERENCE TIES

NOT TO SCALE

DISTANCE UNITS FOR THIS DRAWING IS
U.S. SURVEY FEET

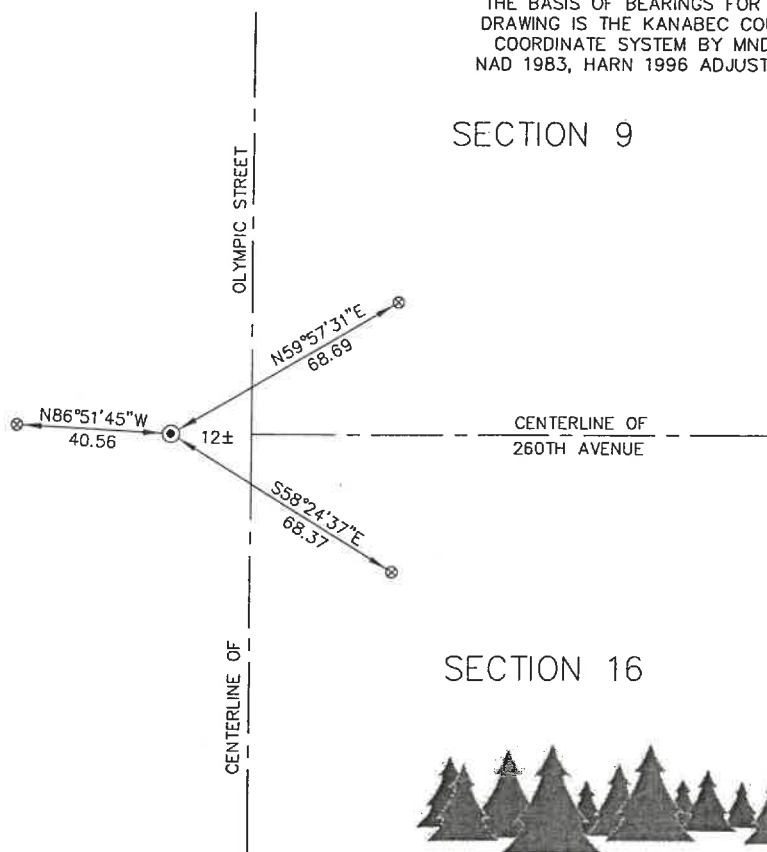
THE BASIS OF BEARINGS FOR THIS
DRAWING IS THE KANABEC COUNTY
COORDINATE SYSTEM BY MNDOT,
NAD 1983, HARN 1996 ADJUSTMENT



SECTION 8

SECTION 9

⊗ = 1/2" x 14" REBAR SET



Kroschel Land Surveyors, Inc.

1639 Main Street North, Suite 6, Pine City, MN 55063
Phone: 320-629-3267 Fax: 320-629-0176

Statement of evidence relative to this corner location is on back of page.

I hereby certify that this report was prepared by me or under my direct supervision, that the United States public land survey monument record is correct and complete to the best of my knowledge and belief, and that I am a duly Licensed Land Surveyor under the laws of the State of Minnesota.

OFFICE OF THE COUNTY RECORDER
County of Kanabec

I hereby certify that this document was filed in the County Recorder's office at _____ .M. on the _____ day of _____ A.D., 20_____

County Recorder _____, Deputy

Tyler J. Kroschel, County Surveyor

1-27-2021
Date

License No. 44490

DOCUMENT NO. _____

Statement of Evidence:

In October of 1851, Deputy Surveyor John Gay set a post to mark the NE Corner of Section 17 , Township 40 North, Range 23 West, 4th Principal Meridian.

Reference ties were taken to:

- 10 inch Pine at North 36 degrees East a distance of 9 links
- 10 inch Pine at South 70 degrees West a distance of 9 links

All of the original Government corner evidence was searched for. None was found.

1912—County Surveyor John Nelson made a survey of Section 9, per the records of the Kanabec County Highway Department. He states a Sandstone monument with "x" was in place at the SW corner of Section 9. He gives a dimension of 5233.8 feet along the west line of Section 9.

1937—County Engineer Frank Turnacliiff filed a Certificate of Public Highway Corner for the SW corner of Section 9. Turnacliiff found a Stone with "x" 6" below the road surface. He created 3 reference ties.

1963—Transit notes at the Kanabec County Highway Department note a large rock found with "x" 16 inches below the road surface. The Highway Department crew set a 1" Iron Rod directly over the "x". The notes show stationing and deflection angles along County Highway No. 11.

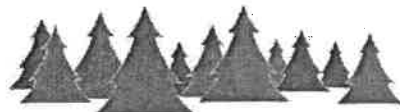
1965±—Kanabec County Highway Department construction plans show the same stationing distances as the Transit notes. The plans shows the section corner 12 feet west of the proposed centerline of County Highway No. 11. Highway Easements taken also describe the new centerline of County Highway No. 11 being 12 feet east of the section corner.

1965—MN DNR Surveyor John Tofte, Jr. made a survey of the Whited Wildlife Management Area in the West Half of Section 8. The DNR sent me his section breakdown map dated May 1965. This shows the assumed SE corner of Section 8 at the intersection of roads N, S, and E. This gives a distance of 2669.42 feet to the S 1/4 corner of Section 8 and a distance of 2617.8 to the E 1/4 corner of Section 8. The breakdown also gives assumed coordinates for the section corners.

In April 2019, I made a survey around Section 8, Township 40 North, Range 23 West, 4th Principal Meridian for Eric Ewald to locate existing monuments, lines of occupation and establish search areas.

On 4/02/2019 I made a search with a magnetic locator 12 feet west of the centerline of County Highway No. 11. No evidence of corner was found. I had previously located section corners 1 mile to the north and south of this corner. I was able to compute the corner location from the Highway Department Transit note dimensions and deflection angles using the Southeast corner of Section 17 and the Northeast corner of Section 5 for basis. This computed location falls 12 feet west of the centerline of County Highway No. 11 and on the centerline of 260th Avenue east, extended west. This location also fits the DNR's dimension to the S 1/4 corner of Section 8 within 5 feet. I set a 1/2" x 14" Rebar with plastic cap marked KROSCHER 44490 at this computed corner location. This location was determined to be the best available evidence of the original corner monument location. Established reference ties and assigned Kanabec County Coordinates.

The corner falls on the blacktop surface of the highway. No excavation was made at this location. The Highway plans show a small subcut in this area. The sandstone monument was probably removed in construction of the highway. No evidence of the 1" Iron Rod or ties were found.



Kroschel Land Surveyors, Inc.

1639 Main Street North, Suite 6, Pine City, MN 55063
Phone: 320-629-3267 Fax: 320-629-0176