

# CERTIFICATE OF LOCATION OF GOVERNMENT CORNER

East Quarter corner of Section 17, Township 40 North, Range 23 West,  
4th Principal Meridian, Kanabec County, State of Minnesota

At the corner location shown on the sketch:  
On 9/23/2014, set a 1/2" Iron Pipe with plastic cap marked  
Kroschel 44490.

Kanabec County U.S. Survey Feet Coordinates  
NAD 1983, HARN 1996 Adjustment  
Obtained by RTK GPS observation  
Northing: 182310.5538  
Easting: 417141.9569

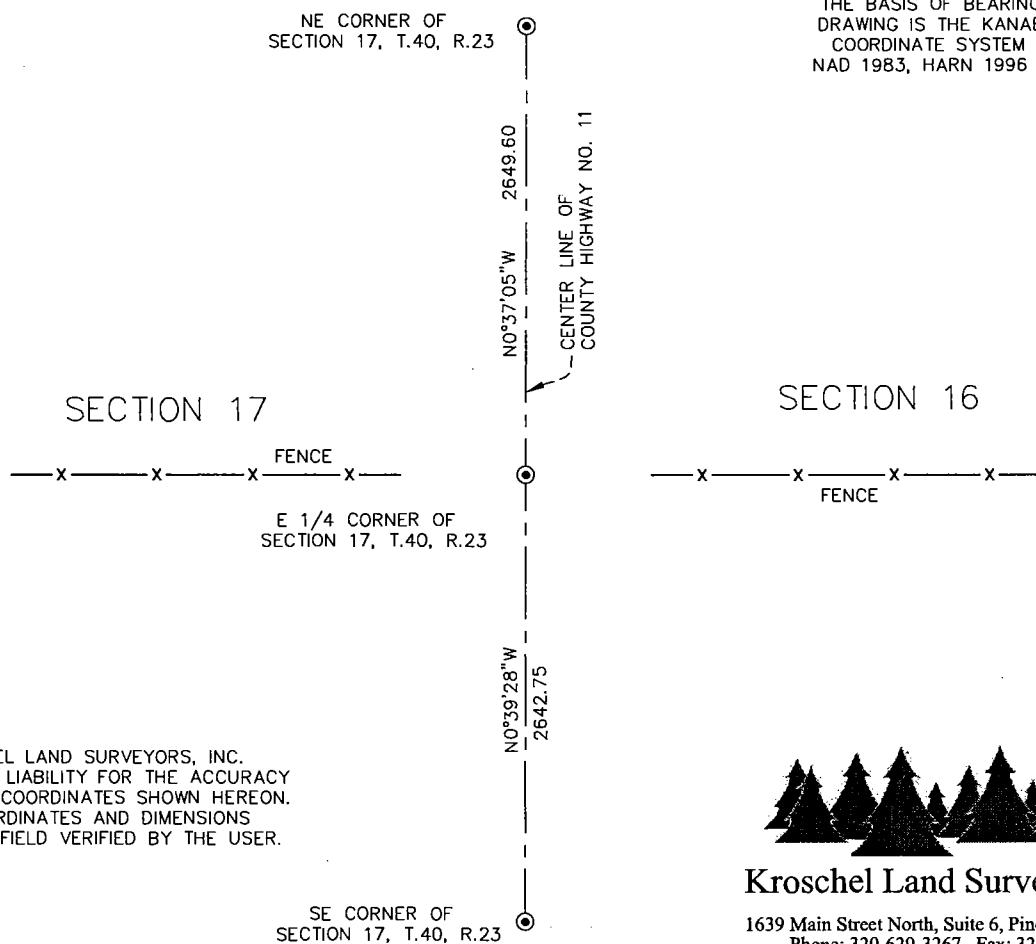
Note: NAD 1983, HARN 1996 Adjustment  
coordinates are NOT compatible with  
NAD 1983 coordinates  
Note: 1 Meter = 3937/1200 U.S. Survey Feet

## SKETCH OF REFERENCE TIES

DISTANCE UNITS FOR THIS DRAWING IS  
U.S. SURVEY FEET

NOT TO SCALE

THE BASIS OF BEARINGS FOR THIS  
DRAWING IS THE KANABEC COUNTY  
COORDINATE SYSTEM BY MNDOT,  
NAD 1983, HARN 1996 ADJUSTMENT



KROSCHER LAND SURVEYORS, INC.  
ASSUMES NO LIABILITY FOR THE ACCURACY  
OF THE GPS COORDINATES SHOWN HEREON.  
ALL COORDINATES AND DIMENSIONS  
SHOULD BE FIELD VERIFIED BY THE USER.



**Kroschel Land Surveyors, Inc.**

1639 Main Street North, Suite 6, Pine City, MN 55063  
Phone: 320-629-3267 Fax: 320-629-0176

Statement of evidence relative to this corner location is on back of page.

I hereby certify that this report was prepared by me  
or under my direct supervision, that the United  
States public land survey monument record is  
correct and complete to the best of my knowledge  
and belief, and that I am a duly Licensed Land  
Surveyor under the laws of the State of Minnesota.

Tyler J. Kroschel, County Surveyor

2-9-2023

Date

License No. 44490

### OFFICE OF THE COUNTY RECORDER

County of Kanabec

I hereby certify that this document was filed in the  
County Recorder's office at \_\_\_\_\_ .M. on the  
\_\_\_\_\_ day of \_\_\_\_\_ A.D., 20\_\_\_\_

County Recorder \_\_\_\_\_, Deputy

DOCUMENT NO. \_\_\_\_\_

Statement of Evidence:

In October of 1851, Deputy Surveyor John M. Gay set a post to mark the East Quarter Corner of Section 17, Township 40 North, Range 23 West, 4th Principal Meridian.

## Reference ties were taken to:

- 12 inch Sugar at South 58 degrees East a distance of 32 links
- 12 inch Sugar at North 40 degrees West a distance of 21 links

All of the original Government corner evidence was searched for. None was found.

1963- Construction plans for CSAH No. 11 show a subcut of about 1.5 feet at the East Quarter corner of Section 17. The County's Transit tie notes show there was no monument in place at the time. The stationing shows an approximate distance of 2643.4 feet to the Southeast corner of Section 17 and an approximate distance of 2652.8 feet to the Northeast corner of Section 17.

In September 2014, I made a survey around Section 17, Township 40 North, Range 23 West, 4th Principal Meridian for Brian Blaisdell to locate existing monuments, lines of occupation and establish search areas.

On 9/23/2014, I made a search with a metal locator at the intersection of the centerline of the County Highway and fence running East and West. Nothing was found in the search. I accepted the centerline of County Highway No. 11 with the fences running East and West as the best available evidence of the original corner monument location. I placed a 1/2" Iron Pipe with a plastic cap marked KROSCHER 44490 and assigned Kanabec County Coordinates.

No excavation was made at this location as any remaining evidence would have been destroyed by construction of the road.