

CERTIFICATE OF LOCATION OF GOVERNMENT CORNER

NORTHEAST Corner of Section 20, Township 40, Range 23, 4TH P.M.

STATE OF MINNESOTA, County of KANABEC

At the corner location shown on the sketch:
 IN OCTOBER 2005 SET 1/2" IRON PIPE
 AND ESTABLISHED G.P.S. COORDINATES ON THE LOCATION.

Kanabec County U.S. Survey Feet Coordinates
 NAD 1983, HARN 1996 Adjustment
 Obtained by RTK GPS Observation

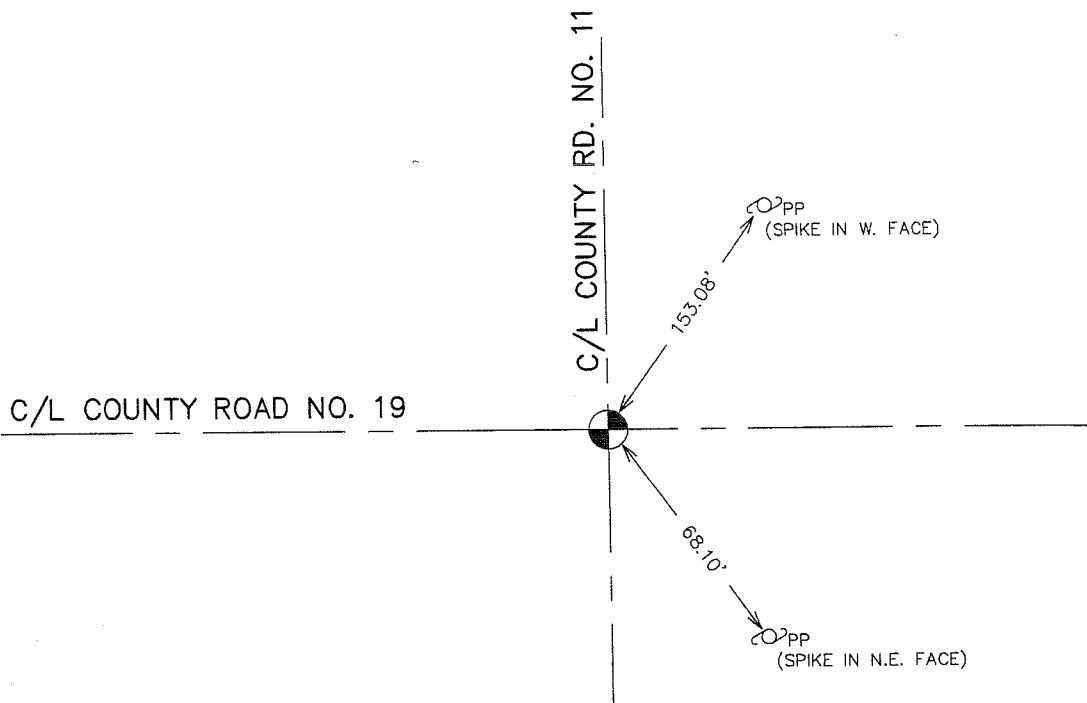
Northing= 179667.97

Easting= 417172.28

Note: NAD 1983, HARN 1996 Adjustment
 coordinates are NOT compatible with
 NAD 1983 coordinates

Note: 1 Meter=3937/1200 U.S. Survey Feet

SKETCH OF REFERENCE TIES



Statement of evidence relative to this corner location is on back of page.

I hereby certify that this document and the data
 contained herein was prepared by me or under
 my direct supervision.

Ernst J. Reed
 Signature

1-23-2006
 Date

Registration No. Minn No 9808

- Land Surveyor, Professional Engineer
 County Surveyor, County Engineer

OFFICE OF THE COUNTY RECORDER

County of _____

I hereby certify that this document was filed in
 the County Recorder's office at _____ M. on the

_____ day of _____ A.D., 20__

County Recorder _____

BY _____ Deputy

DOCUMENT NO. _____

STATEMENT OF EVIDENCE:

ALL OF THE ORIGINAL BEARING TREES ARE NOW GONE.

THERE IS A CORNER LOCATION ON FILE AT THE COUNTY RECORDERS OFFICE DATED 1936 WHICH CALLS FOR A STONE WITH AN + AT THIS CORNER.

IN AUGUST OF 1981, M.B. RUDE RAN A SURVEY ALONG THE NORTH LINE OF SECTIONS 19 AND 20 AND LOCATED THE EXISTING LINES OF OCCUPATION.

THIS CORNER IS AT THE INTERSECTION OF ROADS NORTH-SOUTH-EAST AND WEST.

ON AUGUST 4, 1981 AN EXCAVATION WAS MADE WITH THE COUNTY BACKHOE AND AT 2.5 FEET BELOW THE SURFACE WE FOUND THE STONE MONUMENT WITH AN + AND SET A 4" BY 17" CAST IRON MONUMENT ON TOP OF THE STONE MONUMENT.

IN OCTOBER 2005 E.G. RUD FOUND THIS MONUMENT AND ESTABLISHED KANABEC COUNTY COORDINATES ON THIS POSITION USING G.P.S. EQUIPMENT.