

CERTIFICATE OF LOCATION OF GOVERNMENT CORNER

EAST QUARTER Corner of Section 20, Township 40, Range 23, 4TH P.M.

STATE OF MINNESOTA, County of KANABEC

At the corner location shown on the sketch:

SET KANABEC COUNTY MONUMENT

Kanabec County U.S. Survey Feet Coordinates
NAD 1983, HARN 1996 Adjustment
Obtained by RTK GPS Observation

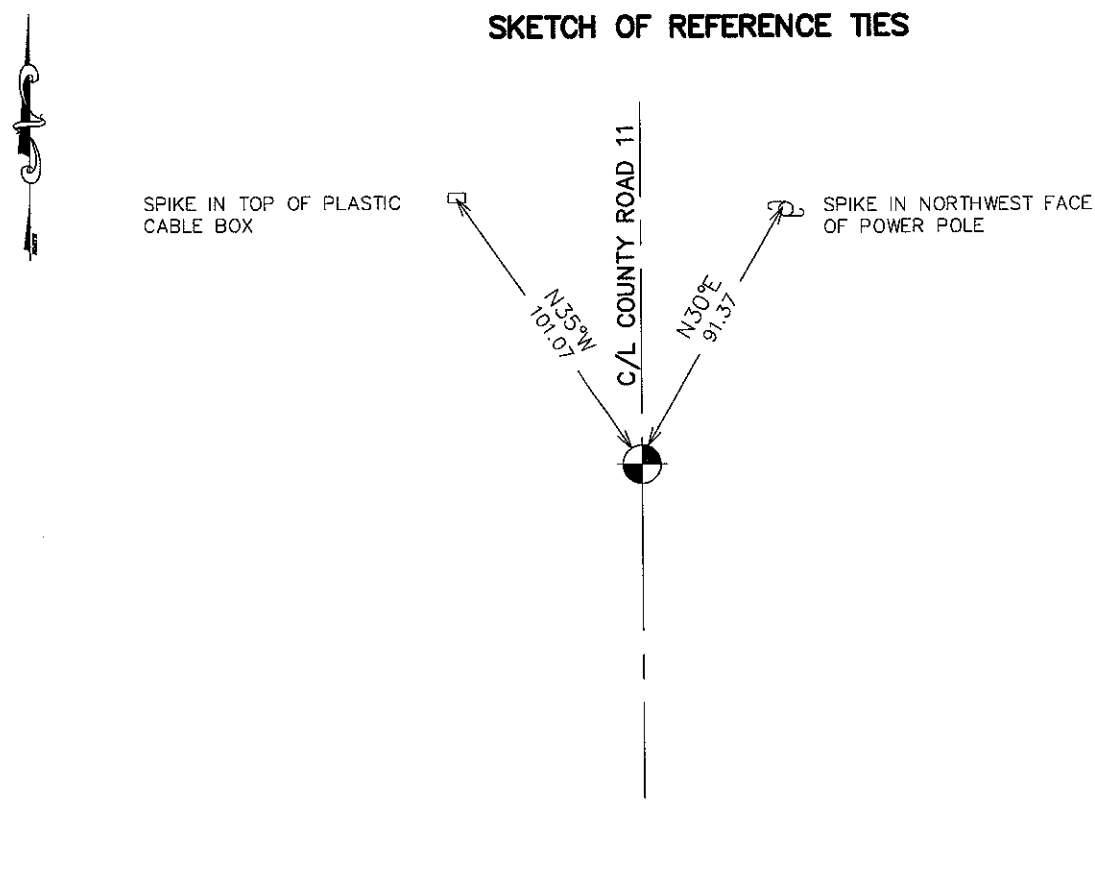
Northing= 177019.51

Easting= 417124.98

Note: NAD 1983, HARN 1996 Adjustment
coordinates are NOT compatible with
NAD 1983 coordinates

Note: 1 Meter=3937/1200 U.S. Survey Feet

SKETCH OF REFERENCE TIES



Statement of evidence relative to this corner location is on back of page.

I hereby certify that this document and the data contained herein was prepared by me or under my direct supervision.

Ernest J. Reed
Signature

1-26-2010
Date

Registration No. 9808

Land Surveyor, Professional Engineer

County Surveyor, County Engineer

OFFICE OF THE COUNTY RECORDER

County of _____

I hereby certify that this document was filed in the County Recorder's office at _____ M. on the _____ day of _____ A.D., 20____

_____ day of _____ A.D., 20____

County Recorder _____

BY _____ Deputy

DOCUMENT NO. _____

E 1/4 CORNER, SEC. 20, T40, R23

STATEMENT OF EVIDENCE

THE ORIGINAL CORNER AND BEARING TREES WERE SET BY GOVERNMENT SURVEYOR JOHN M. GLEY IN SEPTEMBER 1851. THERE IS NO REMAINING EVIDENCE FOR THIS CORNER OR BEARING TREES. THIS CORNER FALLS ON THE CENTERLINE OF A NORTH-SOUTH BITUMINOUS ROAD AND A WELL ESTABLISHED OCCUPATION LINE GOING TO THE EAST.

IN OCTOBER 2005 E.G. RUD RAN A SURVEY AROUND SECTION 21 TO LOCATE EXISTING MONUMENTATION AND LINES OF OCCUPATION. THIS FITS THE PROPORTIONAL MEASUREMENTS WITHIN 3 FEET +/-.

ON OCTOBER 7, 2005 THE KANABEC COUNTY HIGHWAY DEPARTMENT EXCAVATED AN AREA APPROXIMATELY 10 FEET BY 14 FEET BY 5 FEET DEEP. NO EVIDENCE WAS FOUND IN THE EXCAVATION. THE CENTERLINE OF ROAD AND OCCUPATION LINE WAS ACCEPTED AS THE BEST EVIDENCE FOR THE PERPETUATED LOCATION OF THIS CORNER. KANABEC COUNTY COORDINATES WERE ESTABLISHED ON THIS POSITION USING G.P.S. EQUIPMENT.

AFTER ROAD CONSTRUCTION IN 2009, A KANABEC COUNTY MONUMENT WAS SET IN THIS POSITION AND NEW TIES TAKEN.