

CERTIFICATE OF LOCATION OF GOVERNMENT CORNER

NORTH 1/4 Corner of Section 28, Township 40, Range 23, 4TH P.M.

STATE OF MINNESOTA, County of KANABEC

At the corner location shown on the sketch:
In July 2005 set a 1/2" iron pipe

Kanabec County U.S. Survey Feet Coordinates
NAD 1983, HARN 1996 Adjustment
Obtained by RTK GPS Observation

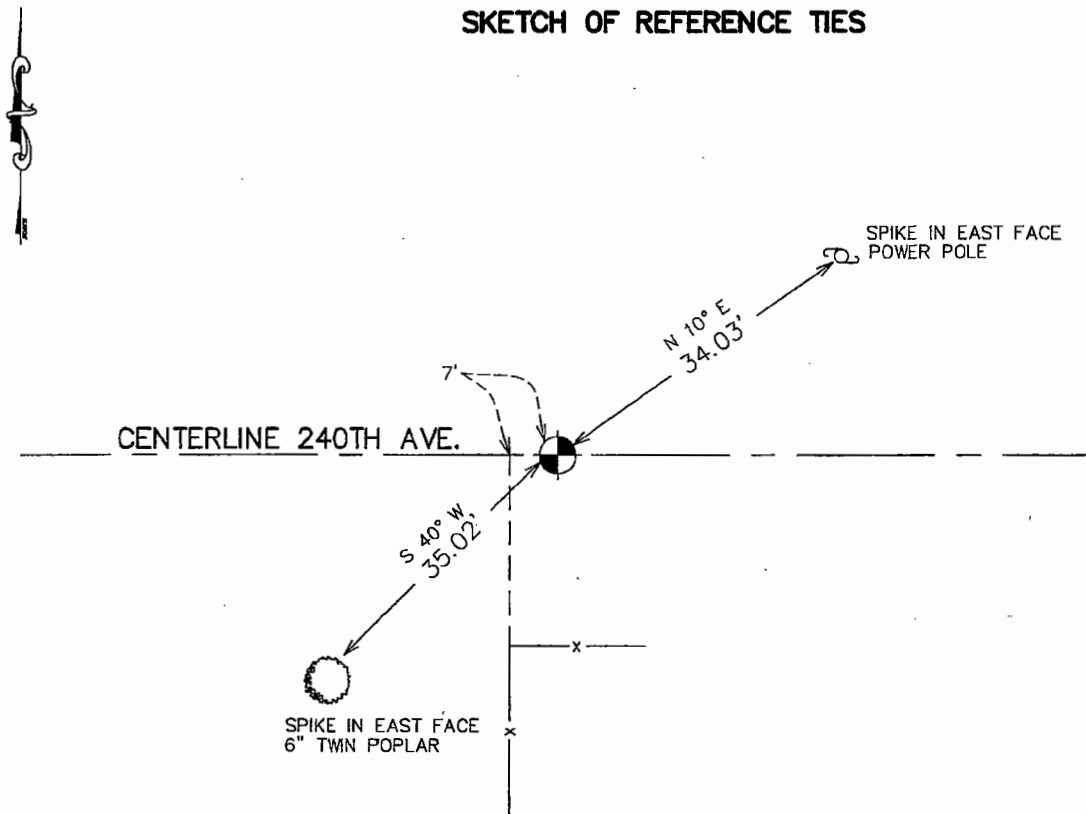
Northing= 174462.947

Easting= 419744.630

Note: NAD 1983, HARN 1996 Adjustment
coordinates are NOT compatible with
NAD 1983 coordinates

Note: 1 Meter=3937/1200 U.S. Survey Feet

SKETCH OF REFERENCE TIES



Statement of evidence relative to this corner location is on back of page.

I hereby certify that this document and the data contained herein was prepared by me or under my direct supervision.

Ernest J. Reed
Signature

9-16-2005
Date

Registration No. 9808

- Land Surveyor, Professional Engineer
- County Surveyor, County Engineer

OFFICE OF THE COUNTY RECORDER

County of _____

I hereby certify that this document was filed in the County Recorder's office at _____ M. on the _____ day of _____ A.D., 20____

County Recorder _____

BY _____ Deputy

DOCUMENT NO. _____

STATEMENT OF EVIDENCE

M.B. RUDE SET THIS CORNER IN A RESURVEY OF SECTION 28, IN 1975. FITS OLD FENCE AND TREE LINE NORTH.

IN MAY 2005 WE DID A SURVEY OF SECTION 28 AND COULD NOT LOCATE THIS CORNER. WE RESET IT AT PROPORTIONATE MEASUREMENT AND ON LINE BETWEEN NE AND NW CORNER OF SECTION 28. WE TOOK NEW TIES AND ESTABLISHED KANABEC COUNTY COORDINATES ON THIS CORNER USING G.P.S. EQUIPMENT.