

CERTIFICATE OF LOCATION OF GOVERNMENT CORNER

NORTHEAST Corner of Section 29, Township 40, Range 23, 4TH P.M.
 STATE OF MINNESOTA, County of KANABEC

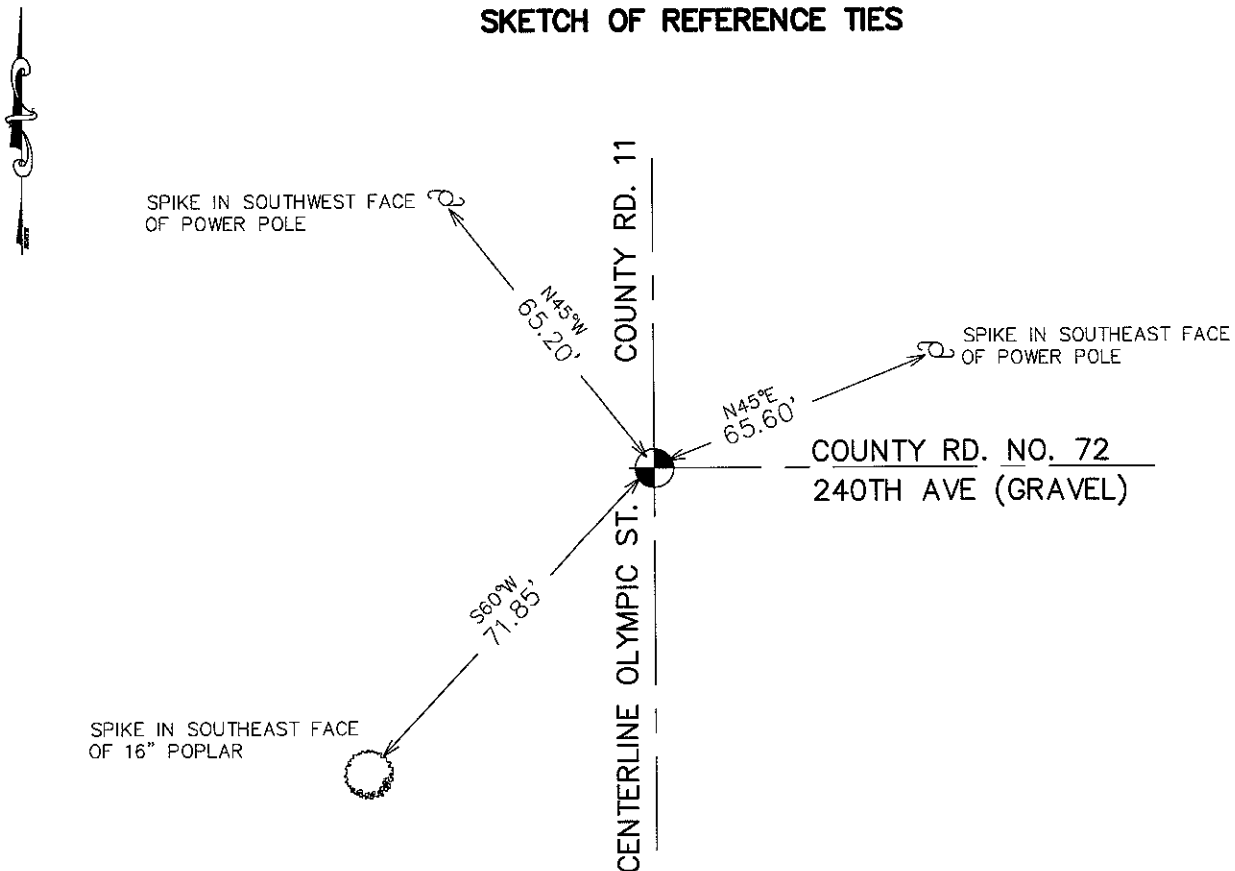
At the corner location shown on the sketch:
 IN NOV. 2009 SET KANABEC COUNTY MONUMENT

Kanabec County U.S. Survey Feet Coordinates
 NAD 1983, HARN 1996 Adjustment
 Obtained by RTK GPS Observation

Northing= 174377.043
 Easting= 417078.233

Note: NAD 1983, HARN 1996 Adjustment
 coordinates are NOT compatible with
 NAD 1983 coordinates
 Note: 1 Meter=3937/1200 U.S. Survey Feet

SKETCH OF REFERENCE TIES



Statement of evidence relative to this corner location is on back of page.

I hereby certify that this document and the data contained herein was prepared by me or under my direct supervision.

Ernest J. Reed 1-26-2010
Signature Date

Registration No. 9808

Land Surveyor, Professional Engineer

County Surveyor, County Engineer

OFFICE OF THE COUNTY RECORDER

County of _____

I hereby certify that this document was filed in the County Recorder's office at _____ M. on the _____ day of _____ A.D., 20____

County Recorder _____

BY _____ Deputy

DOCUMENT NO. _____

NE CORNER, SEC. 29, T40, R23

STATEMENT OF EVIDENCE

IN 1975 M. B. RUDE SET A CAST ALUMINUM MONUMENT ON TOP OF A SANDSTONE MONUMENT IN PLACE.

IN MAY 2005 WE FOUND THIS MONUMENT , PLACED A 1/2" IRON ON TOP AND ESTABLISHED KANABEC COUNTY COORDINATES USING G.P.S. EQUIPMENT.

IN NOVEMBER 2009, AFTER COUNTY RD 11 WAS RECONSTRUCTED A NEW MONUMENT WAS SET AND NEW TIES WERE TAKEN.