

CERTIFICATE OF LOCATION OF GOVERNMENT CORNER

EAST 1/4 Corner of Section 29, Township 40, Range 23, 4TH P.M.
 STATE OF MINNESOTA, County of KANABEC

At the corner location shown on the sketch:
 In July 2005 found a Kanabec county monument.

Kanabec County U.S. Survey Feet Coordinates
 NAD 1983, HARN 1996 Adjustment
 Obtained by RTK GPS Observation

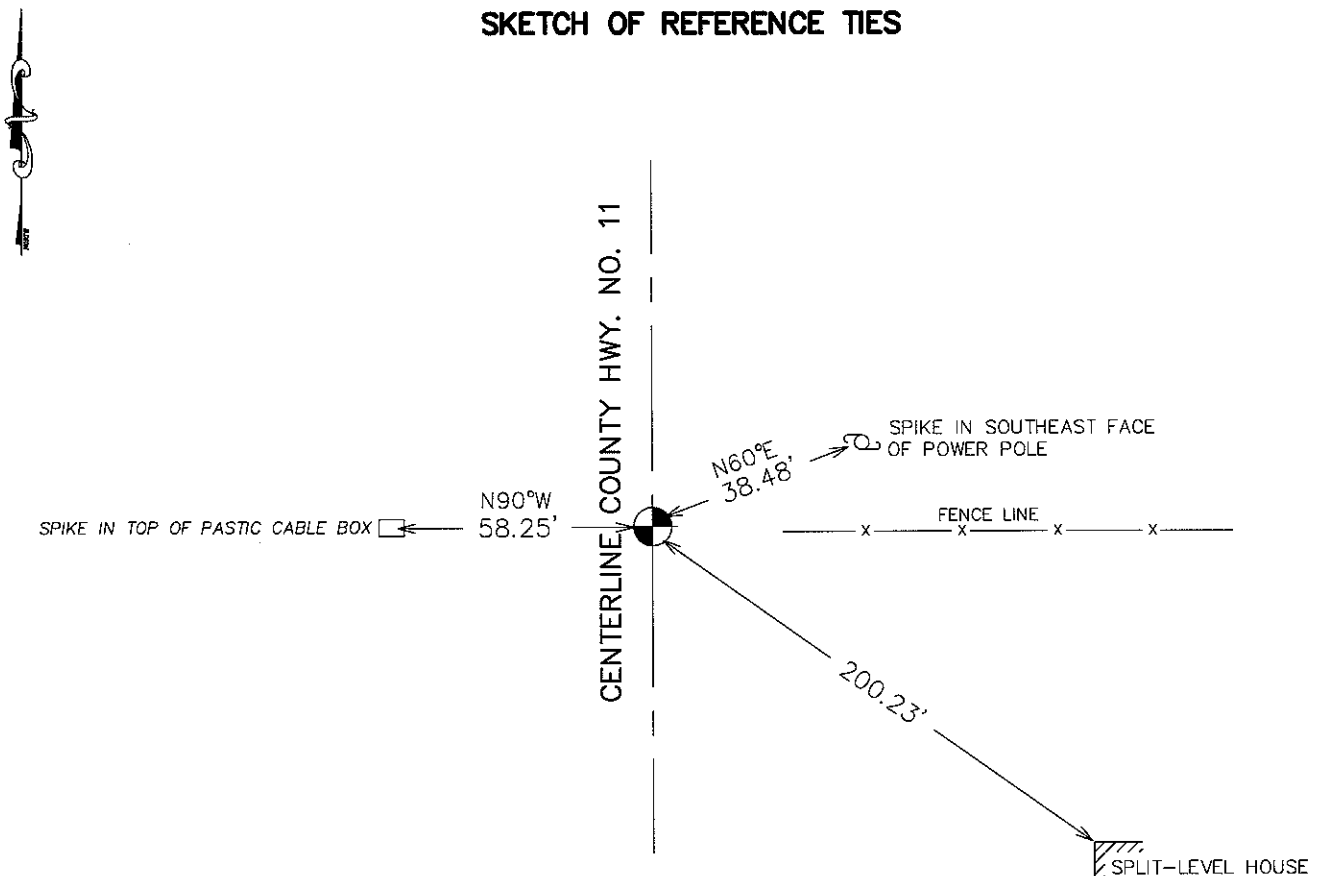
Northing= 171743.277

Easting= 417085.230

Note: NAD 1983, HARN 1996 Adjustment
 coordinates are NOT compatible with
 NAD 1983 coordinates (1986 ADJ.)

Note: 1 Meter=3937/1200 U.S. Survey Feet

SKETCH OF REFERENCE TIES



Statement of evidence relative to this corner location is on back of page.

I hereby certify that this document and the data contained herein was prepared by me or under my direct supervision.

Ernest Blund
 Signature

1-26-2010
 Date

Registration No. 9808

Land Surveyor, [] Professional Engineer

[] County Surveyor, [] County Engineer

OFFICE OF THE COUNTY RECORDER

County of _____

I hereby certify that this document was filed in the County Recorder's office at _____ M. on the _____ day of _____ A.D., 20____

County Recorder _____

BY _____ Deputy

DOCUMENT NO. _____

E 1/4 CORNER, SEC. 29, T40, R23

STATEMENT OF EVIDENCE

IN 1975 M. B. RUDE DUG A LARGE HOLE WITH A BACKHOE AND FOUND NO EVIDENCE OF PREVIOUS MONUMENTATION. HE SET A KANABEC COUNTY MONUMENT AT THE INTERSECTION OF THE CENTERLINE OF COUNTY HIGHWAY NO. 11 AND A WELL ESTABLISHED FENCE AND TREE OCCUPATION LINE TO THE EAST. FITS PROPORTIONAL MEASUREMENTS +/- 2'.

IN MAY 2005 WE DID A RESURVEY OF SECTION 28 AND FOUND THIS MONUMENT. WE ESTABLISHED KANABEC COUNTY COORDINATES USING G.P.S. EQUIPMENT.

IN NOVEMBER 2009, AFTER COUNTY RD 11 WAS RECONSTRUCTED A NEW MONUMENT WAS SET AND NEW TIES WERE TAKEN.