

CERTIFICATE OF LOCATION OF GOVERNMENT CORNER

SOUTH 1/4 Corner of Section 28, Township 40, Range 23, 4TH P.M.
STATE OF MINNESOTA, County of KANABEC

At the corner location shown on the sketch:
In July 2005 found a 1/2" iron pipe.

Kanabec County U.S. Survey Feet Coordinates
NAD 1983, HARN 1996 Adjustment
Obtained by RTK GPS Observation

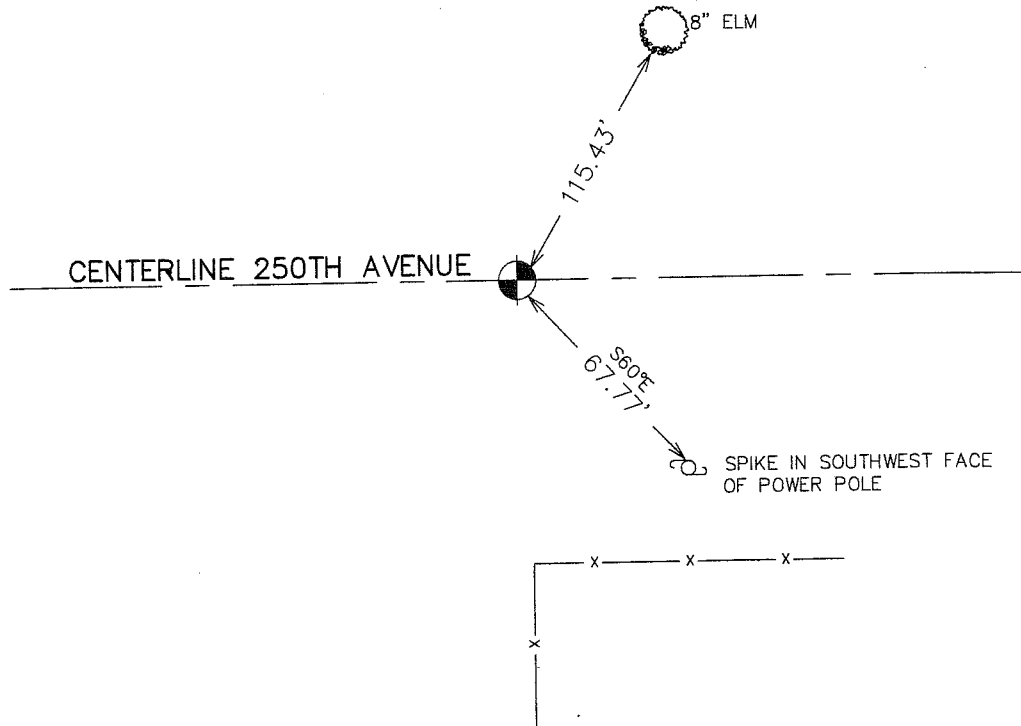
Northing= 169126.033

Easting= 419756.735

Note: NAD 1983, HARN 1996 Adjustment
coordinates are NOT compatible with
NAD 1983 coordinates

Note: 1 Meter=3937/1200 U.S. Survey Feet

SKETCH OF REFERENCE TIES



Statement of evidence relative to this corner location is on back of page.

I hereby certify that this document and the data contained herein was prepared by me or under my direct supervision.

Ernest Alred
Signature

9-20-05
Date

Registration No. 9808

Land Surveyor, Professional Engineer

County Surveyor, County Engineer

OFFICE OF THE COUNTY RECORDER

County of _____

I hereby certify that this document was filed in the County Recorder's office at _____ M. on the

_____ day of _____ A.D., 20____

County Recorder _____

BY _____ Deputy

DOCUMENT NO. _____

STATEMENT OF EVIDENCE

SET IN A RESURVEY OF SECTION 28. FITS PROPORTIONAL MEASUREMENT ALONG SOUTH LINE WELL.

M. B. RUDE FOUND A ROCK IN 1975 AND SET A 1/2" IRON PIPE ON TO *P*.

IN MAY 2005 WE FOUND THIS IRON PIPE AND ESTABLISHED KANABEC COUNTY COORDINATES ON THIS CORNER USING G.P.S. EQUIPMENT.