

# CERTIFICATE OF LOCATION OF GOVERNMENT CORNER

NORTHEAST Corner of Section 32, Township 40, Range 23, 4TH P.M.  
 STATE OF MINNESOTA, County of KANABEC

At the corner location shown on the sketch:  
 In July 2005 found a cast aluminum monument.

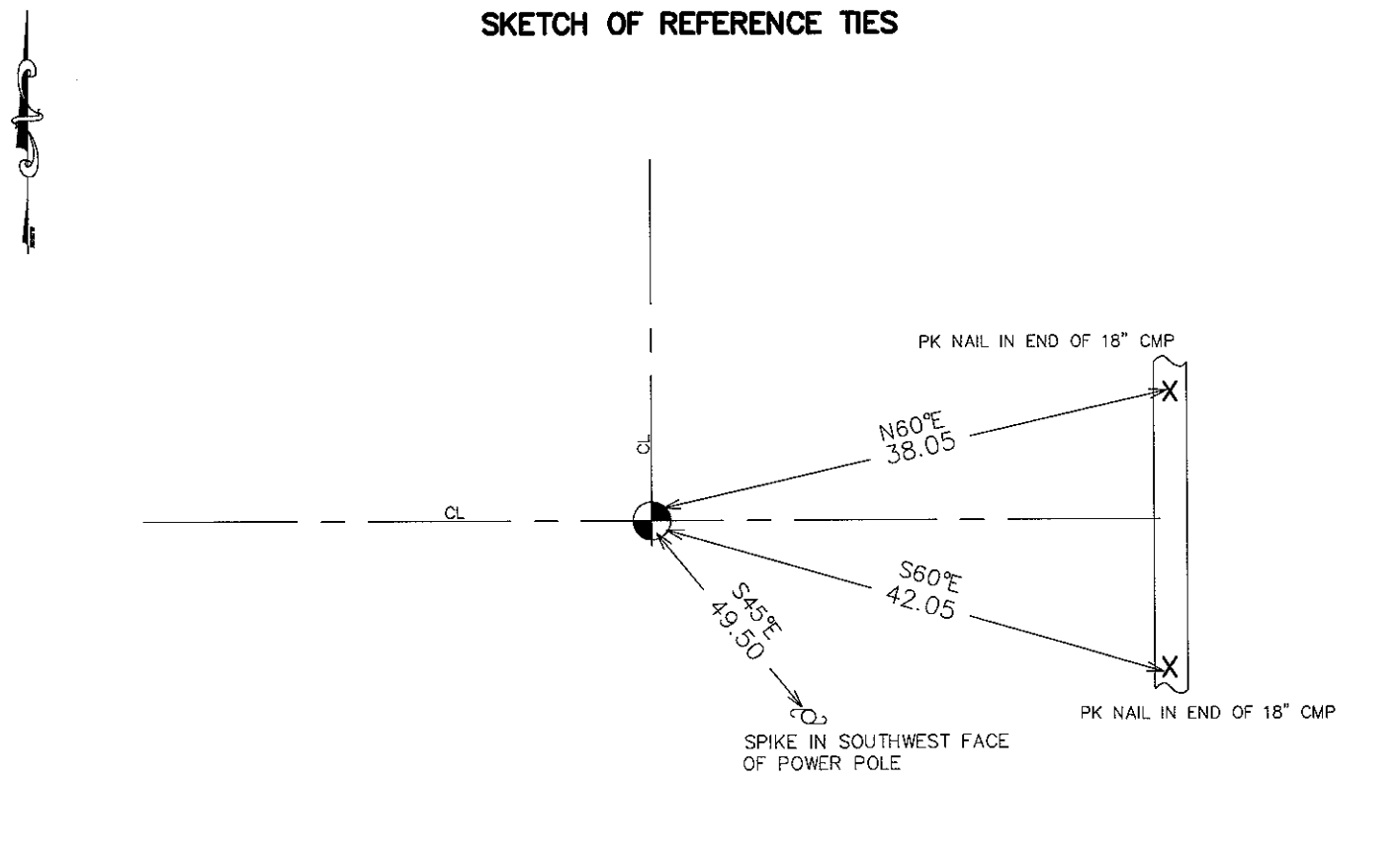
Kanabec County U.S. Survey Feet Coordinates  
 NAD 1983, HARN 1996 Adjustment  
 Obtained by RTK GPS Observation

Northing= 169112.878  
 Easting= 417120.725

Note: NAD 1983, HARN 1996 Adjustment  
 coordinates are NOT compatible with  
 NAD 1983 coordinates

Note: 1 Meter=3937/1200 U.S. Survey Feet

### SKETCH OF REFERENCE TIES



Statement of evidence relative to this corner location is on back of page.

I hereby certify that this document and the data contained herein was prepared by me or under my direct supervision.

*Ernest Rud*  
 \_\_\_\_\_  
 Signature

1-26-2010  
 \_\_\_\_\_  
 Date

Registration No. 9808

Land Surveyor,       Professional Engineer  
 County Surveyor,     County Engineer

### OFFICE OF THE COUNTY RECORDER

County of \_\_\_\_\_

I hereby certify that this document was filed in the County Recorder's office at \_\_\_\_\_ M. on the \_\_\_\_\_ day of \_\_\_\_\_ A.D., 20\_\_\_\_

County Recorder \_\_\_\_\_

BY \_\_\_\_\_ Deputy

**DOCUMENT NO.** \_\_\_\_\_

NE CORNER, SEC. 32, T40, R23

**STATEMENT OF EVIDENCE**

IN 1975 M. B. RUDE FOUND A SANDSTONE MONUMENT WITH AN "X" IN TOP. FITS ROAD INTERSECTION.

IN MAY 2005 WE FOUND THE CAST ALUMINUM MONUMENT SET BY M. B. RUDE AND ESTABLISHED KANABEC COUNTY COORDINATES ON THIS CORNER USING G.P.S. EQUIPMENT.

IN NOVEMBER 2009, AFTER COUNTY RD 11 WAS RECONSTRUCTED THIS MONUMENT WAS VERIFIED AND NEW TIES WERE TAKEN.