

# CERTIFICATE OF LOCATION OF GOVERNMENT CORNER

E 1/4 Corner of Section 32, Township 40, Range 23, 4<sup>TH</sup> P.M.

STATE OF MINNESOTA, County of KANABEC

At the corner location shown on the sketch:

*On Jan 27 2012 we set a #7 rebar  
4' long with aluminium cap.*

Kanabec County U.S. Survey Feet Coordinates  
NAD 1983, HARN 1996 Adjustment  
Obtained by RTK GPS Observation

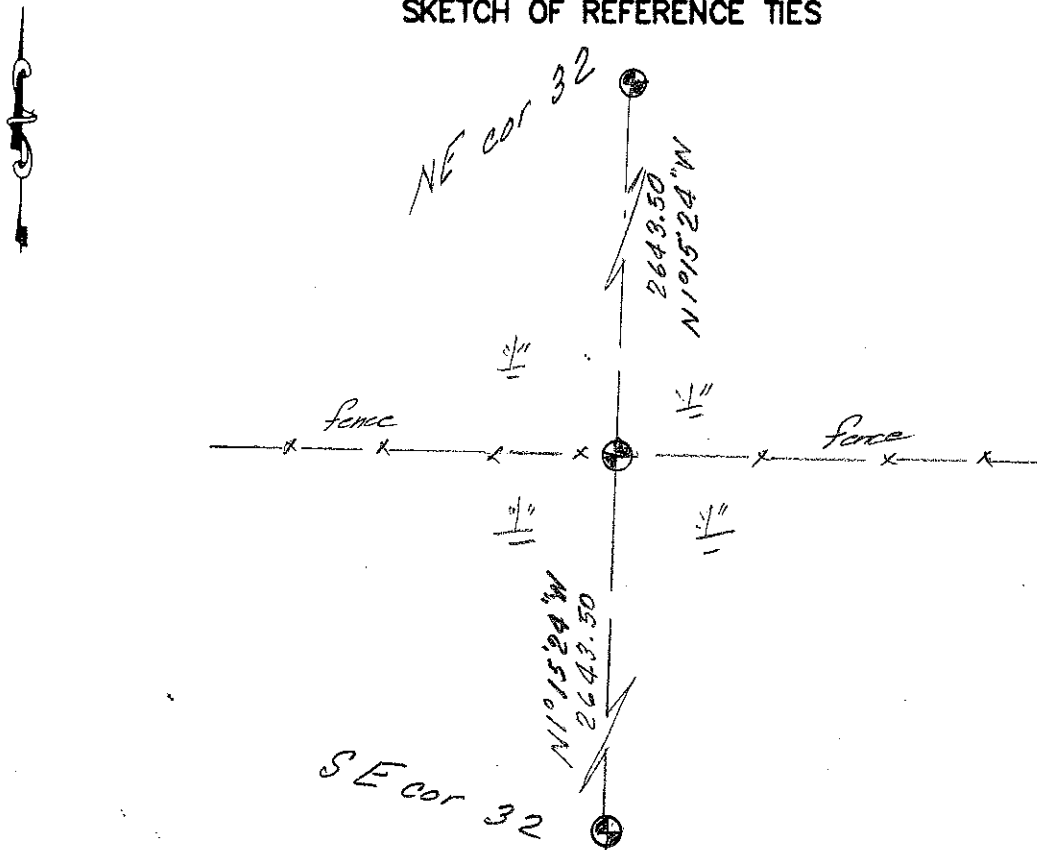
Northing= 166470.08

Easting= 417178.69

Note: NAD 1983, HARN 1996 Adjustment  
coordinates are NOT compatible with  
NAD 1983 coordinates

Note: 1 Meter=3937/1200 U.S. Survey Feet

### SKETCH OF REFERENCE TIES



Statement of evidence relative to this corner location is on back of page.

I hereby certify that this document and the data contained herein was prepared by me or under my direct supervision.

Ernest J. Reed  
Signature

11-27-12  
Date

Registration No. 9808

Land Surveyor,      [ ] Professional Engineer

[ ] County Surveyor,      [ ] County Engineer

### OFFICE OF THE COUNTY RECORDER

County of \_\_\_\_\_

I hereby certify that this document was filed in the County Recorder's office at \_\_\_\_\_ M. on the

\_\_\_\_\_ day of \_\_\_\_\_ A.D., 20\_\_

County Recorder \_\_\_\_\_

BY \_\_\_\_\_ Deputy

DOCUMENT NO. \_\_\_\_\_

STATEMENT OF EVIDENCE: EAST QUARTER 32-40-23 4023097

The original government post was set by Deputy Surveyor, John M. Gley on October 2, 1851 in a marsh and two bearing trees noted as:

4" Birch bearing North 43 degrees West at 69 links

5" Oak bearing North 45 degrees West at 82 links

In Book A of Surveys, Page 166, at Kanabec County offices a survey recorded dated November 12, 1898 Section 32. The survey shows running to the east quarter post but doesn't state what is place. No other records of surveys could be found.

In January 2012, E.G. Rud & Sons surveyed parcel in the Northeast  $\frac{1}{4}$  and the Southeast  $\frac{1}{4}$  of Section 32. We could find no evidence for the East  $\frac{1}{4}$  corner so we set a 4 foot iron pipe in the swamp with an aluminum cap on line and equidistance from Northeast to Southeast corner of Section 32. No ties were available. This location fit an old fence running to the East and to the West. Kanabec County coordinates were established.