

CERTIFICATE OF LOCATION OF GOVERNMENT CORNER

NE Corner of Section 16, Township 40, Range 23, 4TH P.M.
STATE OF MINNESOTA, County of KANABEC

At the corner location shown on the sketch:

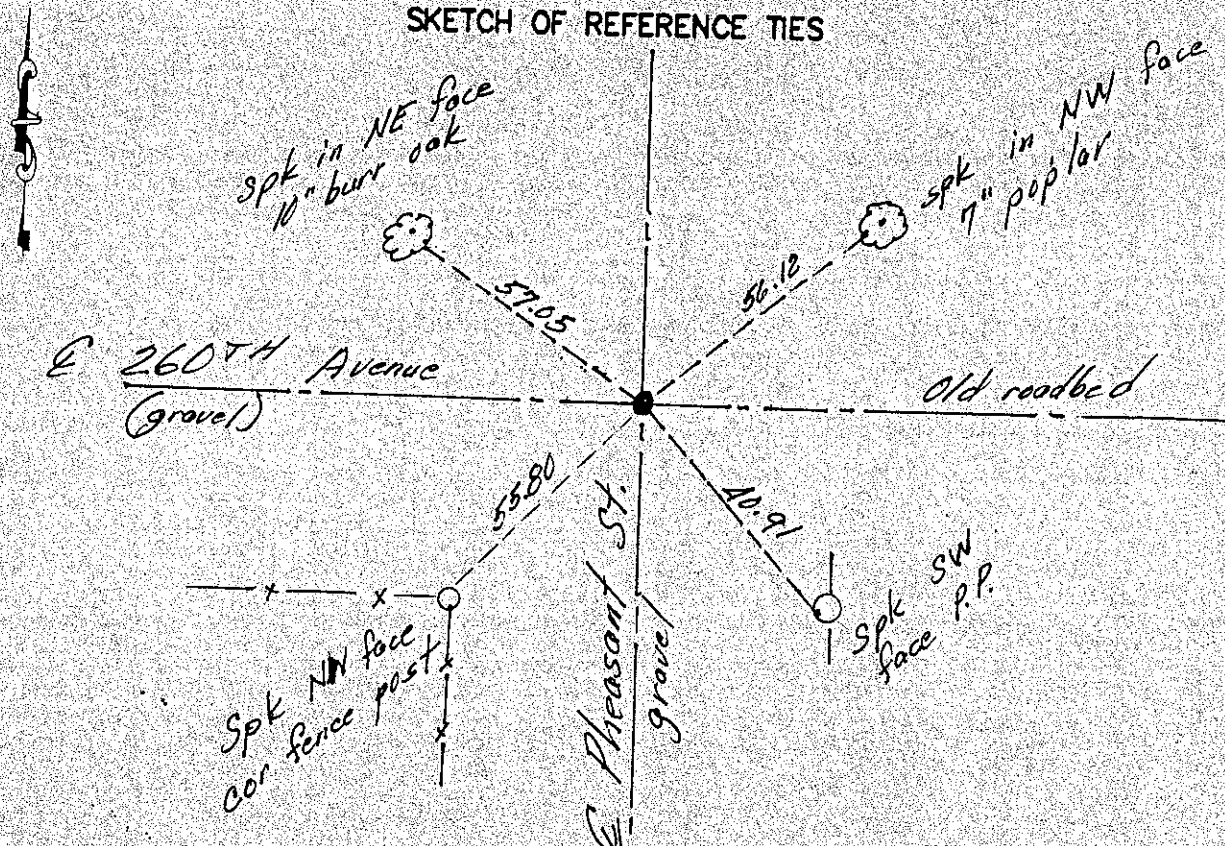
*Found stone at E E of roads
Replaced it with 1/2" iron pipe.*

Kanabec County U.S. Survey Feet Coordinates
NAD 1983, HARN 1996 Adjustment
Obtained by RTK GPS Observation

Northing = ~~185462.55~~ 185127.80
Easting = ~~425662.75~~ 422363.65

Note: NAD 1983, HARN 1996 Adjustment
coordinates are NOT compatible with
NAD 1983 coordinates
Note: 1 Meter = 3937/1200 U.S. Survey Feet

SKETCH OF REFERENCE TIES



Statement of evidence relative to this corner location is on back of page

I hereby certify that this document and the data contained herein was prepared by me or under my direct supervision.

Ernst J. Red
Signature

1-1-13
Date

Registration No. 9808

Land Surveyor, Professional Engineer

County Surveyor, County Engineer

OFFICE OF THE COUNTY RECORDER

County of _____
I hereby certify that this document was filed in the County Recorder's office at _____ M. on the _____ day of _____ A.D., 20____

County Recorder _____
BY _____ Deputy

DOCUMENT NO. _____

The original Government post was set by Deputy Surveyor John M Gley in September 1851 and 2 bearing trees were noted as:

10" Maple bearing South 18° East at 10 links

12" Birch bearing North 25° East at 50 links

No visible evidence remains today for the post or its accessories.

This corner falls on the centerline of an old roadbed running east and west and the center line of a township road running north and south. There is a record of a road opening along the north line of section 15 and 14 dated June of 1914 but no survey was made. At the centerline we found a 12" round rock with no markings. The top appeared to be taken off, possibly a road grader. We removed the stone and found no other evidence so we set a 1/2" iron pipe, took ties and established Kanabec County coordinates on this position.