

CERTIFICATE OF LOCATION OF GOVERNMENT CORNER

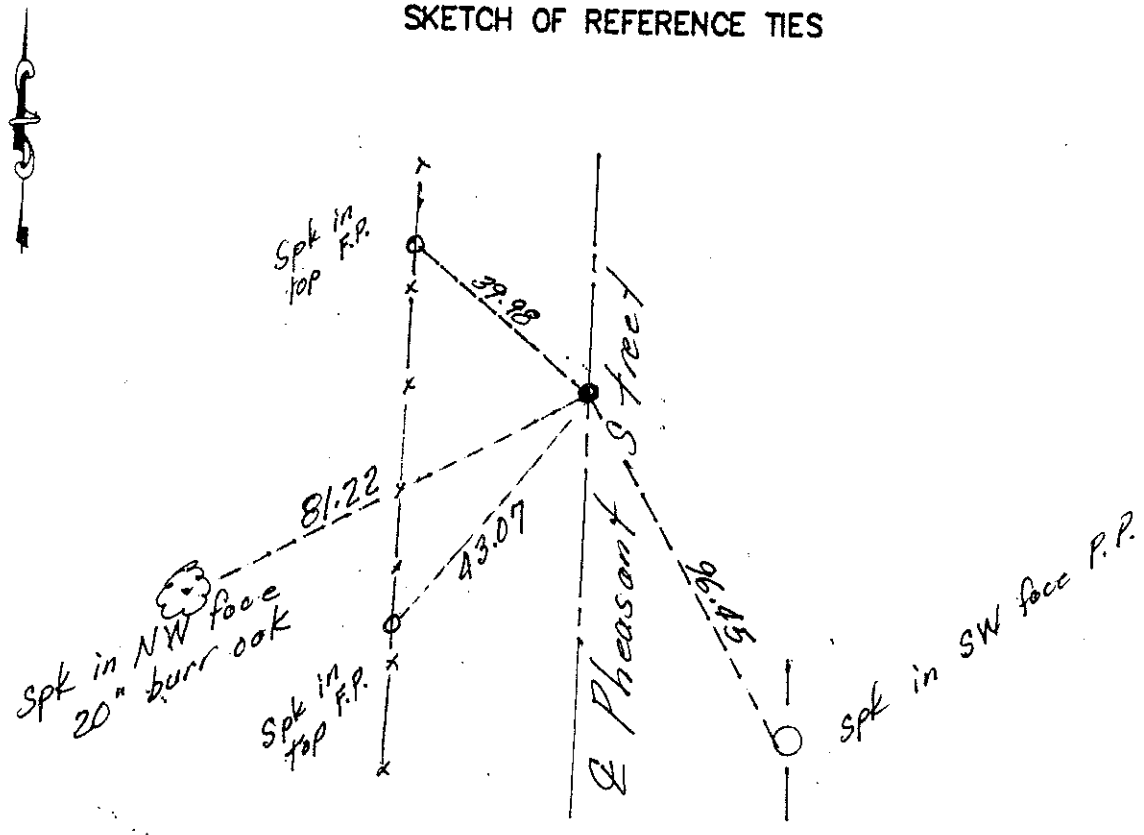
E 1/4 Corner of Section 16, Township 40, Range 23, 4TH P.M.
STATE OF MINNESOTA, County of KANABEC

At the corner location shown on the sketch:

Set 1/2" iron pipe equidistant from NE & SE corners.

Kanabec County U.S. Survey Feet Coordinates
NAD 1983, HARN 1996 Adjustment
Obtained by RTK GPS Observation
Northing= 182472.26
Easting= 422417.43
Note: NAD 1983, HARN 1996 Adjustment coordinates are NOT compatible with NAD 1983 coordinates
Note: 1 Meter=3937/1200 U.S. Survey Feet

SKETCH OF REFERENCE TIES



Statement of evidence relative to this corner location is on back of page.

I hereby certify that this document and the data contained herein was prepared by me or under my direct supervision.

Ernest J. Reed
Signature

1-1-13
Date

Registration No. 9808

- Land Surveyor, Professional Engineer
- County Surveyor, County Engineer

OFFICE OF THE COUNTY RECORDER

County of _____

I hereby certify that this document was filed in the County Recorder's office at _____ M. on the _____ day of _____ A.D., 20____

County Recorder _____

BY _____ Deputy

DOCUMENT NO. _____

The original Government post was set by Deputy Surveyor John M Gley in September 1851 and 2 bearing trees were noted as:

8" Oak bearing North 16° East at 3 links

8" Ironwood bearing South 78° West at 20 links

No visible evidence remains today for the post or its accessories.

This corner falls in the centerline of Pheasant Street running north and south with no occupation lines running east or west. No records of a road opening or previous surveys could be found along this line. Therefore we set a monument on line and equidistant between the Northeast and Southeast corners of Section 16. This fell in the centerline of the roadway and fits the 1/16 lines north and south of this corner. Ties were taken and Kanabec County coordinates established on this position.