

4023089

CERTIFICATE OF LOCATION OF GOVERNMENT CORNER

N¹/₄ Corner of Section 22, Township 40, Range 23, 4TH P.M.

STATE OF MINNESOTA, County of KANABEC

At the corner location shown on the sketch:

found P.K. over mag ott at E of Co Rd 19 & @ Plum St to north & fence line to south

Kanabec County U.S. Survey Feet Coordinates
NAD 1983, HARN 1996 Adjustment
Obtained by RTK GPS Observation

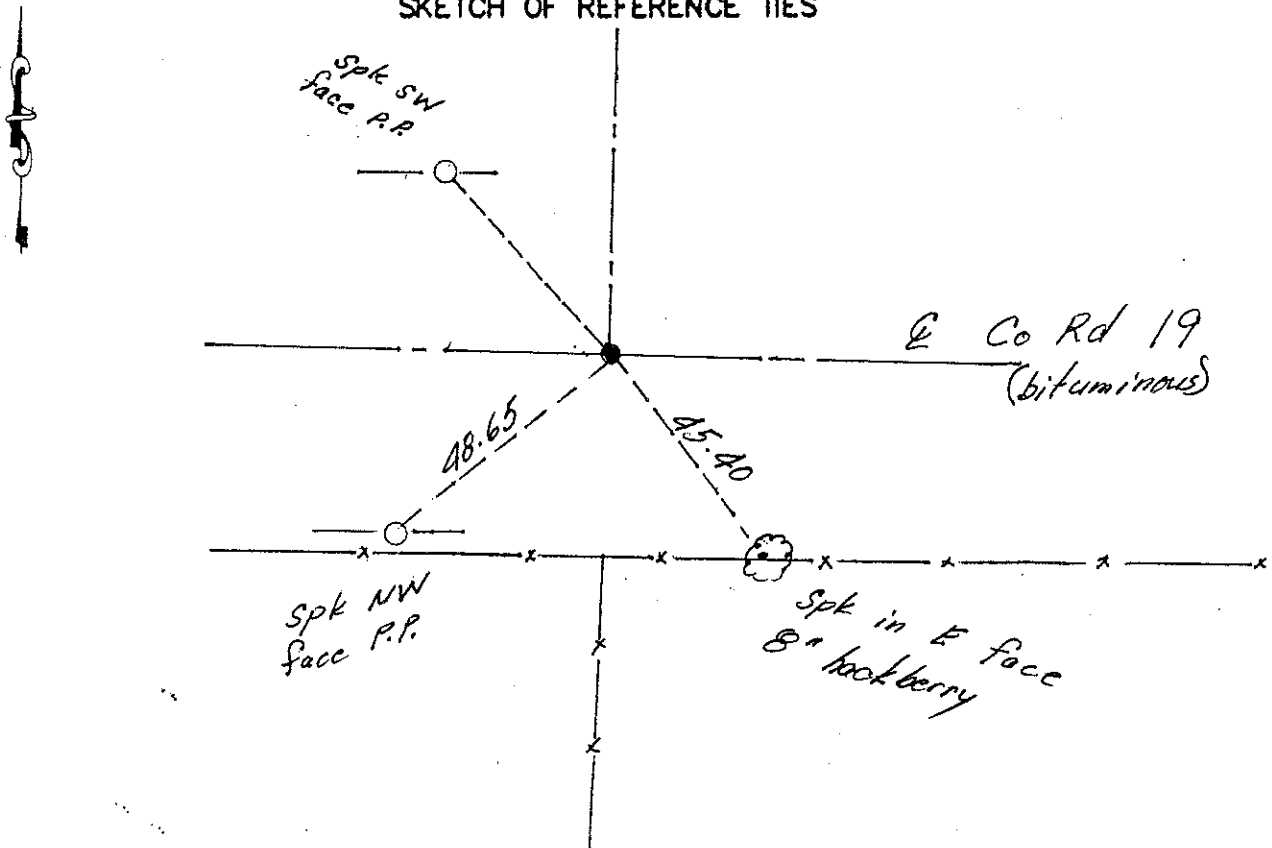
Northing= 179782.13

Easting= 425100.47

Note: NAD 1983, HARN 1996 Adjustment coordinates are NOT compatible with NAD 1983 coordinates

Note: 1 Meter=3937/1200 U.S. Survey Feet

SKETCH OF REFERENCE TIES



Statement of evidence relative to this corner location is on back of page.

I hereby certify that this document and the data contained herein was prepared by me or under my direct supervision.

Ernest J. Red
Signature

1-1-13
Date

Registration No. 9808

Land Surveyor, Professional Engineer

County Surveyor, County Engineer

OFFICE OF THE COUNTY RECORDER

County of _____

I hereby certify that this document was filed in the County Recorder's office at _____ M. on the _____ day of _____ A.D., 20____

County Recorder _____

BY _____ Deputy

DOCUMENT NO. _____

North Quarter Section 22, Township 40, Range 23

4023089

The original Government post was set by Deputy Surveyor John M Gley in September 1851 and 2 bearing trees were noted as:

8" Elm bearing North 15° West at 21 links

7" Elm bearing South 45° East at 19 links

No visible evidence remains today for the post or its accessories.

This corner falls in the centerline of County Road No. 19 running east to west and the Centerline of Plum Street running north. There is a road opening for County Road No. 19 filed in March of 1900 and J.B. Vickerey recorded the south line of section 15 to be 79.6 chains or 5253.6 feet, Government chainage was 79.64 chains. Today we measure the mile to be 5267.78 feet. There was a magnetic attraction at centerline centerline so a P.K. was set there, ties taken and Kanabec County coordinates established on this position.