

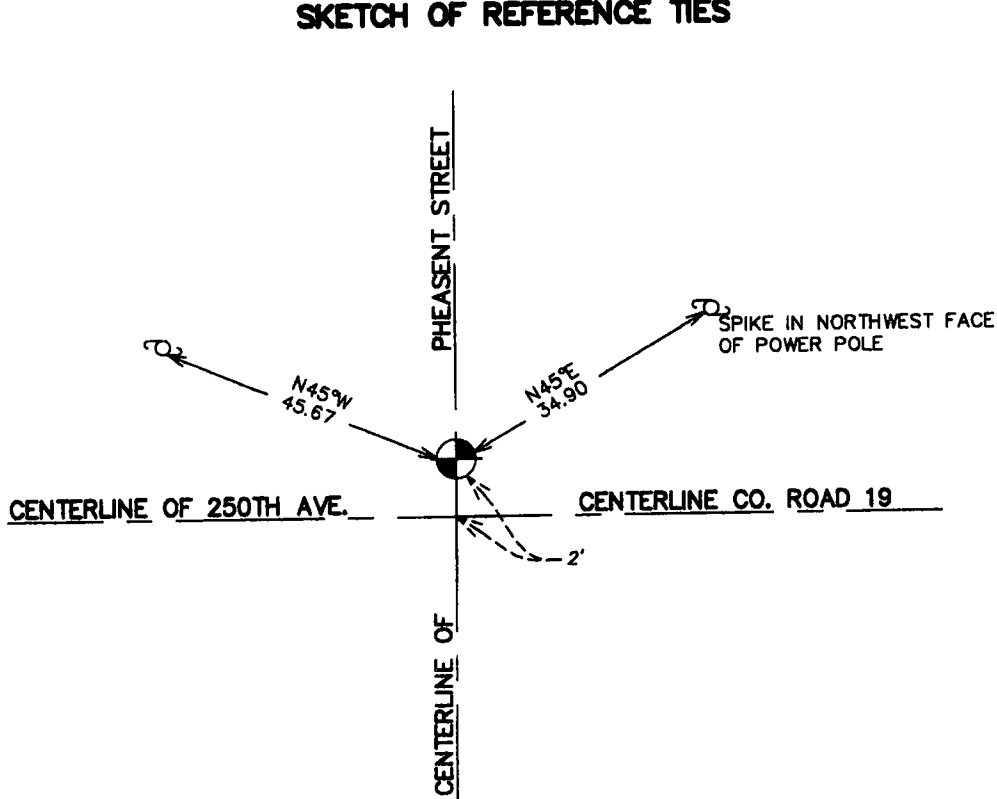
CERTIFICATE OF LOCATION OF GOVERNMENT CORNER

NORTHEAST Corner of Section 21, Township 40, Range 23, 4TH P.M.
STATE OF MINNESOTA, County of KANABEC

At the corner location shown on the sketch:
SET 1/2 INCH IRON PIPE
AND ESTABLISHED G.P.S. COORDINATES ON ITS LOCATION.

Kanabec County U.S. Survey Feet Coordinates
NAD 1983, HARN 1996 Adjustment
Obtained by RTK GPS Observation
Northing= 179818.44
Easting= 422472.22
Note: NAD 1983, HARN 1996 Adjustment
coordinates are NOT compatible with
NAD 1983 coordinates
Note: 1 Meter=3937/1200 U.S. Survey Feet

SKETCH OF REFERENCE TIES



NOTE: TIES ARE TO SPIKE IN NEAR FACE

Statement of evidence relative to this corner location is on back of page.

I hereby certify that this document and the data contained herein was prepared by me or under my direct supervision.

Ernest Rud July 15, 2006
Signature Date

Registration No. Minn No 9808

Land Surveyor, Professional Engineer
 County Surveyor, County Engineer

OFFICE OF THE COUNTY RECORDER

County of Kanabec

I hereby certify that this document was filed in the County Recorder's office at 8:00A M. on the

20th day of July A.D., 2006

County Recorder Rhonda A Olson

BY _____ Deputy

DOCUMENT NO. _____

NE CORNER SECTION 21, T40, R23

STATEMENT OF EVIDENCE

THE ORIGINAL CORNER AND BEARING TREES WERE SET BY GOVERNMENT SURVEYOR JOHN M. GLEY IN SEPTEMBER 1851. EVIDENCE TO THE CORNER AND BEARING TREES NO LONGER REMAIN. THIS CORNER FALLS AT THE INTERSECTION OF A BITUMINOUS ROAD RUNNING EAST AND WEST WITH A GRAVEL ROAD RUNNING NORTH AND SOUTH.

IN OCTOBER 2005 E.G. RUD RAN A SURVEY AROUND SECTION 21 TO LOCATE EXISTING MONUMENTATION AND LINES OF OCCUPATION. NO SUBSEQUENT SURVEY INFORMATION COULD BE FOUND AT THE COUNTY OFFICE. COUNTY ROAD 19 HAS 10" OF BITUMINOUS SURFACING PLACED OVER A GRAVEL BASE. ON OCTOBER 26 A 12" SQUARE HOLE WAS JACK HAMMERED AT THE LOCATION OF A MAGNETIC ATTRACTION WHICH WAS ON THE NORTH SOUTH ROAD CENTERLINE AND 2 FEET NORTH OF THE EAST WEST CENTERLINE. AT 13" DOWN A SOLID HALF INCH ROD WAS FOUND. THIS FIT THE P.I. LOCATION OF COUNTY ROAD 19. E.G. RUD ACCEPTED THIS ROD AS THE PERPETUATED LOCATION FOR THE CORNER.

A HALF INCH CAPPED IRON PIPE WAS SET, TIES TOOK AND KANABEC COUNTY COORDINATES WERE ESTABLISHED ON THE LOCATION USING G.P.S. EQUIPMENT.