

CERTIFICATE OF LOCATION OF GOVERNMENT CORNER

N. 1/4 Corner of Section 34, Township 40, Range 23, 4TH P.M.

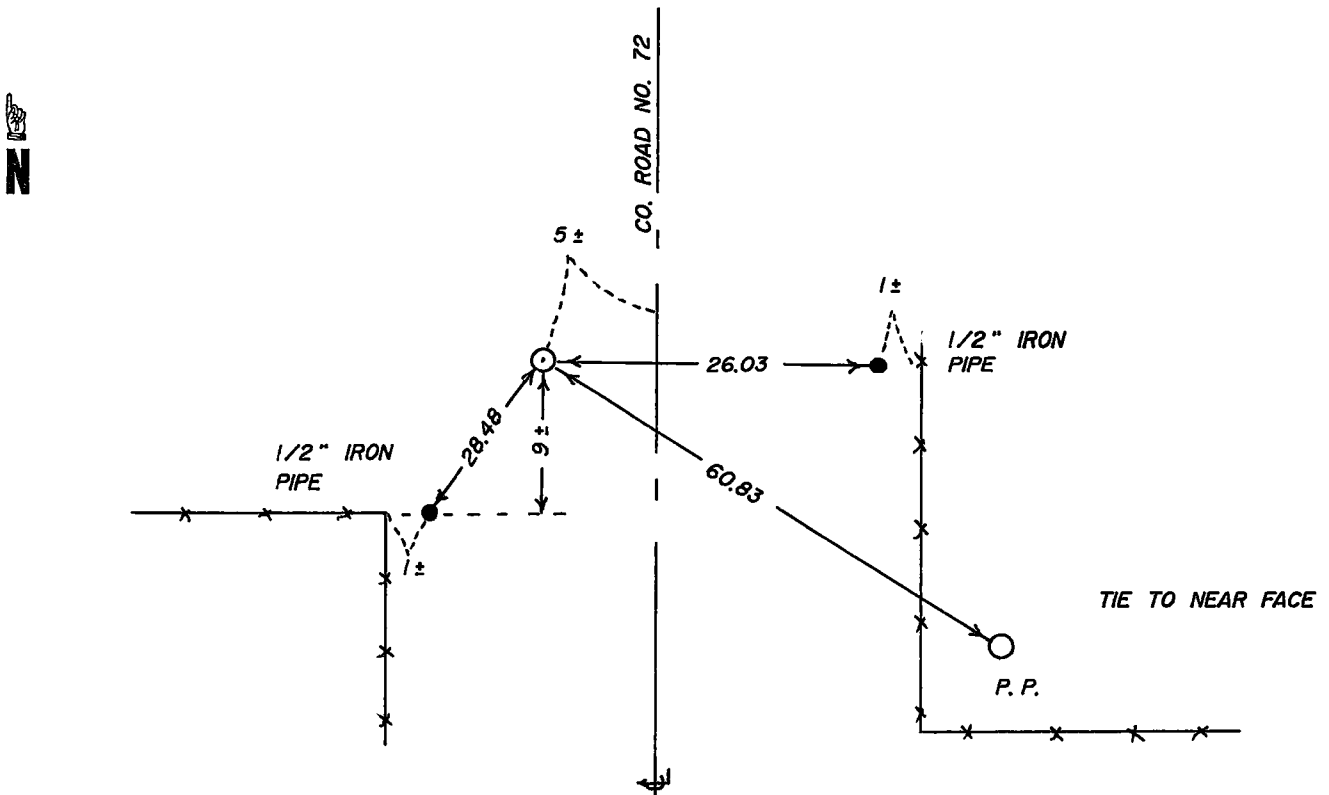
STATE OF MINNESOTA, County of KANABEC

At the corner location shown on the sketch

On _____ found a _____
Date

left monument as found, lowered monument, removed monument (explain)
 On 7/12/90 placed a 7/8" X 36" CAPPED REBAR
Date

SKETCH OF REFERENCE TIES



Statement of evidence relative to this corner location is on back of page.

I hereby certify that this document and the data contained herein was prepared by me or under my direct supervision.

M. B. [Signature] B-3-90
Signature Date

Registration No. 8195

Land Surveyor, Professional Engineer
 County Surveyor, County Engineer

County Recorder
OFFICE OF THE REGISTER OF DEEDS

County of Kanabec

I hereby certify that this document was filed in the Register of Deeds office at 2:20 P.M. on the

30 day of August A.D., 1990.

County Recorder
Register of Deeds Delma J. Besser

By _____, Deputy

DOCUMENT NO. _____

STATEMENT OF EVIDENCE

All of the original government bearing trees are now gone.

There is no resurvey data on file for this corner.

In June of 1990, we ran a survey around Section 34 to locate existing monuments, lines of occupation and search the areas.

This corner falls in County Highway No. 72 in an area that has been cut and all evidence of the original corner destroyed in road construction.

This corner was set on line and proportional measurements between the northeast and northwest corners of Section 34.