

CERTIFICATE OF LOCATION OF GOVERNMENT CORNER

NORTHEAST Corner of Section 10, Townshi.p 40, Range 23, 4TH P.M.

STATE OF MINNESOTA, County of KANABEC

At the corner location shown on the sketch:
SET REBAR WITH ALUMINUM CAP
AND ESTABLISHED G.P.S. COORDINATES ON ITS LOCATION.

Kanabec County U.S. Survey Feet Coordinates
NAD 1983, HARN 1996 Adjustment
Obtained by RTK GPS Observation

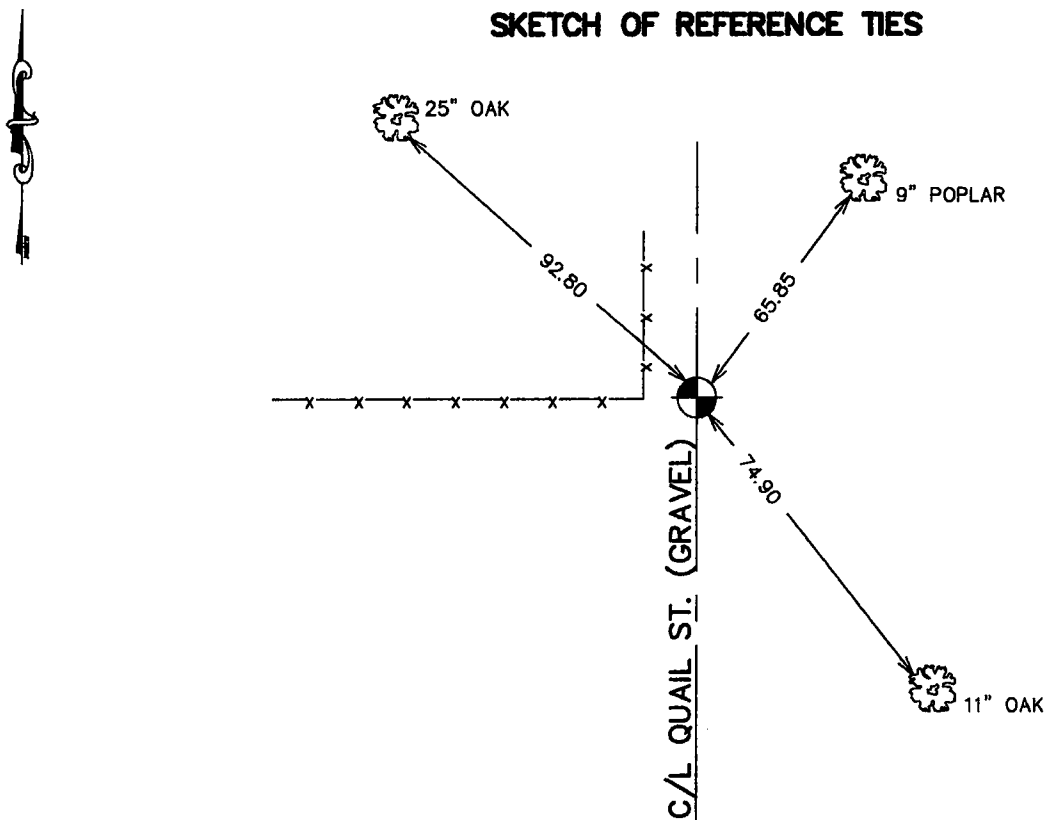
Northing= 190282.30

Easting= 427706.07

Note: NAD 1983, HARN 1996 Adjustment
coordinates are NOT compatible with
NAD 1983 coordinates

Note: 1 Meter=3937/1200 U.S. Survey Feet

SKETCH OF REFERENCE TIES



Statement of evidence relative to this corner location is on back of page.

I hereby certify that this document and the data contained herein was prepared by me or under my direct supervision.

Ernest J. Reed
Signature

9-11-2006
Date

Registration No. Minn No 9808

Land Surveyor, Professional Engineer

County Surveyor, County Engineer

OFFICE OF THE COUNTY RECORDER

County of Kanabec

I hereby certify that this document was filed in the County Recorder's office at 8:00 A M. on the

13th day of Sept A.D., 2006

County Recorder Rhonda Olson

BY _____ Deputy

DOCUMENT NO. _____

NORTHEAST CORNER SECTION 10, T40, R23

STATEMENT OF EVIDENCE

THE ORIGINAL CORNER WAS SET BY DEPUTY SURVEYOR JOHN M. GLEY IN SEPTEMBER 1851. THE CORNER AND BEARING TREES NO LONGER REMAIN. NO RECORDS OF ANY SUBSEQUENT SURVEYS COULD BE FOUND AT KANABEC COUNTY COURT HOUSE.

IN JUNE 2006 E.G. RUD RAN A SURVEY AROUND SECTIONS 1, 2, 11 AND 12 TO TIE IN MONUMENTATION AND LINES OF OCCUPATION.

THIS CORNER FALLS ON THE CENTERLINE OF A NORTH-SOUTH GRAVEL ROAD AND FENCE LINE RUNNING WEST.

ON JULY 11, 2006 AN EXCAVATION WAS MADE AT THIS LOCATION. A 16' X 12' SANDSTONE WAS FOUND 8" DOWN. THIS SANDSTONE HAD A CHISELED X ON THE TOP SIDE.

NO OTHER EVIDENCE WAS FOUND.

THIS SANDSTONE WAS ACCEPTED AS THE PERPETUATED LOCATION FOR THIS CORNER. A #7 REBAR WAS SET WITH AN ALUMINUM CAP. TIES WERE TAKEN AND KANABEC COUNTY COORDINATES WERE ESTABLISHED USING G.P.S EQUIPMENT.