

CERTIFICATE OF LOCATION OF GOVERNMENT CORNER

East Quarter Corner of Section 10, Township 40 North, Range 23 West,
4th Principal Meridian, Kanabec County, State of Minnesota

At the corner location shown on the sketch:
On 6/04/2019 found a 7/8" Rebar with Aluminum Cap.

Kanabec County U.S. Survey Feet Coordinates
NAD 1983, HARN 1996 Adjustment
Obtained by RTK GPS observation
Northing: 187635.8269
Easting: 427681.6646

Note: NAD 1983, HARN 1996 Adjustment
coordinates are NOT compatible with
NAD 1983 coordinates

Note: 1 Meter = 3937/1200 U.S. Survey Feet

SKETCH OF REFERENCE TIES

DISTANCE UNITS FOR THIS DRAWING IS
U.S. SURVEY FEET

NOT TO SCALE

THE BASIS OF BEARINGS FOR THIS
DRAWING IS THE KANABEC COUNTY
COORDINATE SYSTEM BY MNDOT,
NAD 1983, HARN 1996 ADJUSTMENT

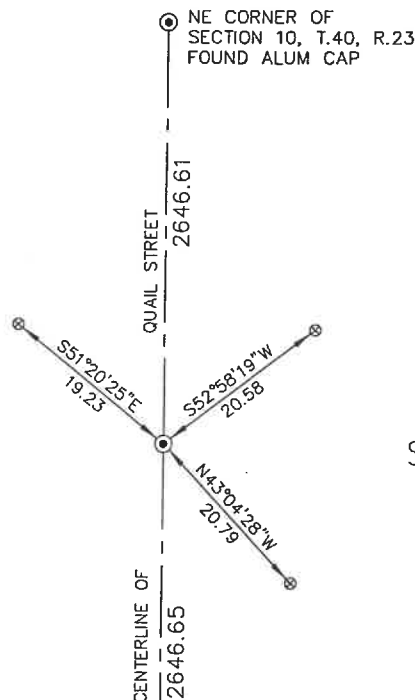


⊗ = 1/2" x 14" REBAR SET

SECTION 10

SECTION 11

SE CORNER OF
SECTION 10, T.40, R.23



Kroschel Land Surveyors, Inc.

1639 Main Street North, Suite 6, Pine City, MN 55063
Phone: 320-629-3267 Fax: 320-629-0176

Statement of evidence relative to this corner location is on back of page.

I hereby certify that this report was prepared by me or under my direct supervision, that the United States public land survey monument record is correct and complete to the best of my knowledge and belief, and that I am a duly Licensed Land Surveyor under the laws of the State of Minnesota.

Tyler J. Kroschel, County Surveyor

1-29-2021
Date

License No. 44490

OFFICE OF THE COUNTY RECORDER

County of Kanabec

I hereby certify that this document was filed in the
County Recorder's office at _____ .M. on the
_____ day of _____ A.D., 20____

County Recorder _____
_____, Deputy

DOCUMENT NO. _____

Statement of Evidence:

In October of 1851, Deputy Surveyor John Gay set a post to mark the E 1/4 Corner of Section 10, Township 40 North, Range 23 West, 4th Principal Meridian.

Reference ties were taken to:

- 8 inch Ash at North 80 degrees East a distance of 37 links
- 7 inch Ash at North 65 degrees West a distance of 32 links

All of the original Government corner evidence was searched for. None was found.

2006- County Surveyor Ernie Rud, LS 9808 made a survey around Sections 1, 2, 11, and 12. Rud's section breakdown map shows a computed position at the W 1/4 corner of Section 11. It appears he established the location at a lost position between the NW and SW corners of Section 11.

In June 2019, I made a survey around Section 11, Township 40 North, Range 23 West, 4th Principal Meridian for Matt Eder to locate existing monuments, lines of occupation and establish search areas.

On 6/04/2019 I made a search with a magnetic locator at Rud's computed location for the corner. I found a 7/8" Rebar with Aluminum Cap at the centerline of the County Road, down about 0.4 feet. The found Rebar fit Rud's dimensions very well. This location was determined to be the best available evidence of the original corner location. Established reference ties and assigned Kanabec County Coordinates.

No excavation was made at this location, as it falls in a large swamp. Excavation of the corner would damage the road bed.



Kroschel Land Surveyors, Inc.

1639 Main Street North, Suite 6, Pine City, MN 55063
Phone: 320-629-3267 Fax: 320-629-0176