

CERTIFICATE OF LOCATION OF GOVERNMENT CORNER

NE Corner of Section 15, Township 40, Range 23, 4TH P.M.

STATE OF MINNESOTA, County of KANABEC

At the corner location shown on the sketch:

Found a 1/2" I.P. on E of road & fence line to east

Kanabec County U.S. Survey Feet Coordinates
NAD 1983, HARN 1996 Adjustment
Obtained by RTK GPS Observation

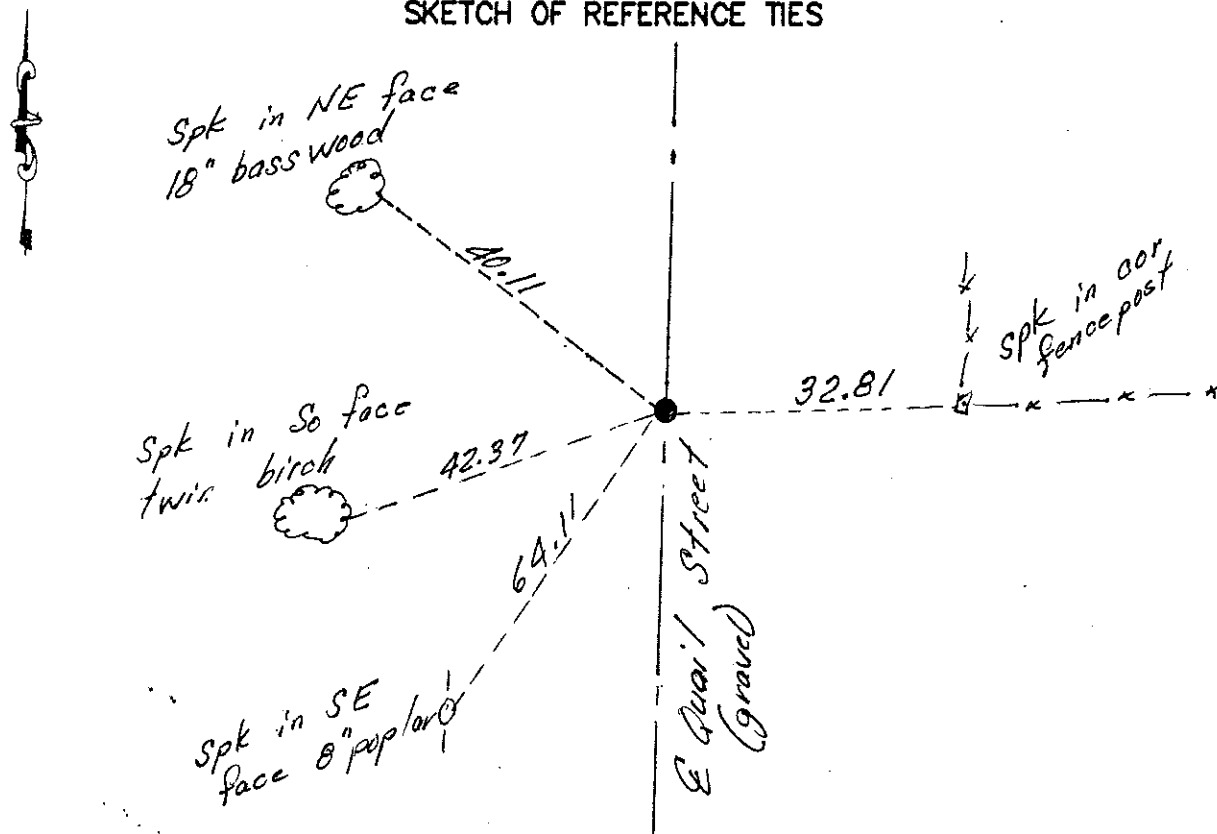
Northing = 184989.29

Easting = 427657.24

Note: NAD 1983, HARN 1996 Adjustment coordinates are NOT compatible with NAD 1983 coordinates

Note: 1 Meter = 3937/1200 U.S. Survey Feet

SKETCH OF REFERENCE TIES



Statement of evidence relative to this corner location is on back of page.

I hereby certify that this document and the data contained herein was prepared by me or under my direct supervision.

Ernest J. Red
Signature

1-1-13
Date

Registration No. 9808

Land Surveyor, Professional Engineer

County Surveyor, County Engineer

OFFICE OF THE COUNTY RECORDER

County of _____

I hereby certify that this document was filed in the County Recorder's office at _____ M. on the

_____ day of _____ A.D., 20____

County Recorder _____

BY _____ Deputy

DOCUMENT NO. _____

The original Government post was set by Deputy Surveyor John M Gley in September 1851 and 2 bearing trees were noted as:

15" Pine bearing South 33° East at 7 links

24" Pine bearing South 56° West at 15 links

No visible evidence remains today for the post or its accessories.

This corner falls on the centerline of an old roadbed running east and west and the center line of Quail Street running north to south. There is a record of a road opening along the north line of section 15 and 14 dated June of 1914 but no survey was made. There is also a fence running east from this location. Using a magnetic locator we found a ½" iron pipe. We accepted this iron to be the best evidence for the location of this corner as it fit all occupation lines real well and agreed with original Government measurements. Ties were taken and Kanabec County coordinates established on this position.