

CERTIFICATE OF LOCATION OF GOVERNMENT CORNER

Northeast Corner of Section 22, Township 40, Range 23, 4th P.M.

STATE OF MINNESOTA, County of KANABEC

At the corner location shown on the sketch:

*Found P.K. over magnetic off.
at E E of roads*

Kanabec County U.S. Survey Feet Coordinates
NAD 1983, HARN 1996 Adjustment
Obtained by RTK GPS Observation

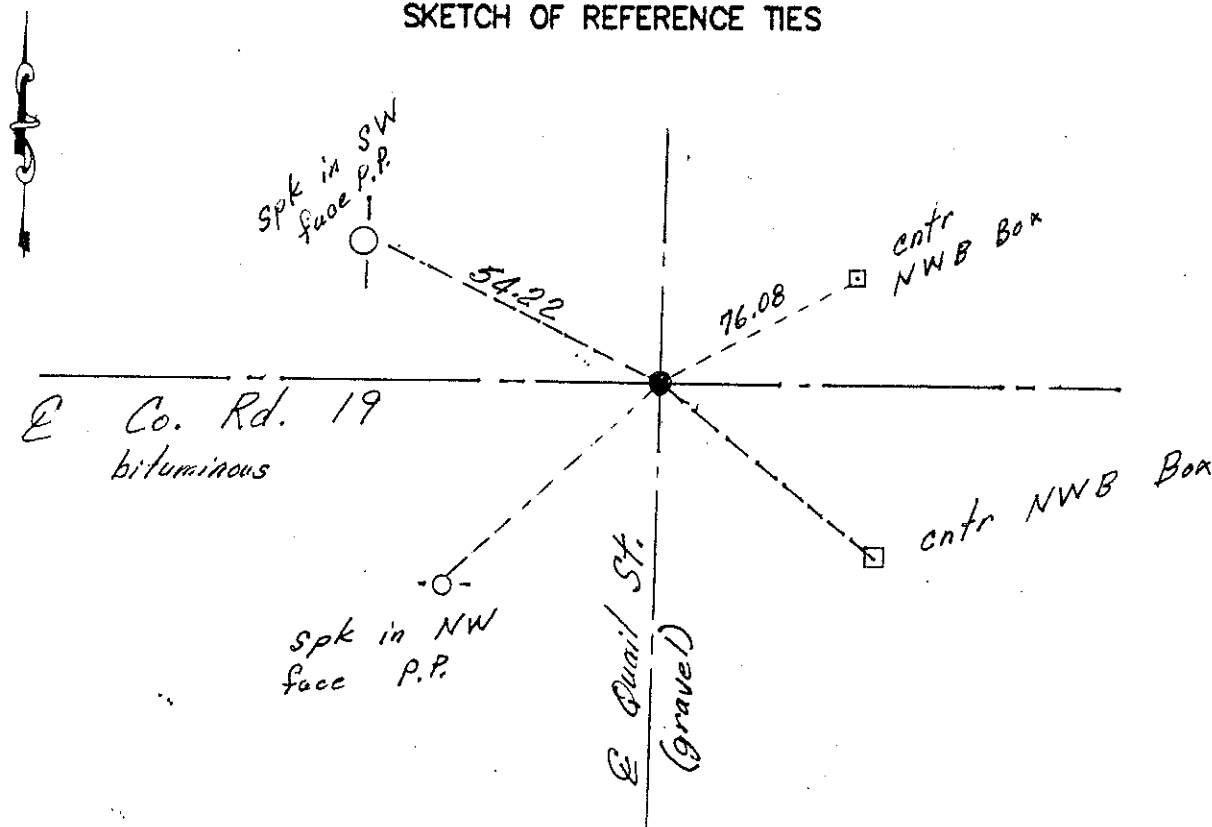
Northing= 179746.50

Easting= 427739.53

Note: NAD 1983, HARN 1996 Adjustment
coordinates are NOT compatible with
NAD 1983 coordinates

Note: 1 Meter=3937/1200 U.S. Survey Feet

SKETCH OF REFERENCE TIES



Statement of evidence relative to this corner location is on back of page.

I hereby certify that this document and the data contained herein was prepared by me or under my direct supervision.

Ernst J. Red
Signature

1-1-13
Date

Registration No. 9808

Land Surveyor, Professional Engineer

County Surveyor, County Engineer

OFFICE OF THE COUNTY RECORDER

County of _____

I hereby certify that this document was filed in the County Recorder's office at _____ M. on the

_____ day of _____ A.D., 20__

County Recorder _____

BY _____ Deputy

DOCUMENT NO. _____

The original Government post was set by Deputy Surveyor John M Gley in September 1851 and 2 bearing trees were noted as:

10" Maple bearing South 18° East at 10 links

12" Birch bearing North 25° East at 50 links

No visible evidence remains today for the post or its accessories.

This corner falls in the centerline of County Road No. 19 running east to west and the centerline of Quail Street running north and south. There is a road opening for County Road No. 19 filed in March of 1900 and J.B. Vickerey recorded the south line of section 15 to be 79.6 chains or 5253.6 feet. Government chainage was 79.64 chains. Today we measure the mile to be 5267.78 feet. Vickerey recorded the south line of section 14 to be 5239.08 feet and we measured 5249.91 which was consistent with south line of section 15. We encountered a magnetic attraction and set a P.K. over this point. Due to 12" depth of bituminous no excavation was made. Ties were taken and Kanabec County coordinates established on this location.