

CERTIFICATE OF LOCATION OF GOVERNMENT CORNER

N. 1/4 Corner of Section 26, Township 40, Range 23, 4TH P.M.

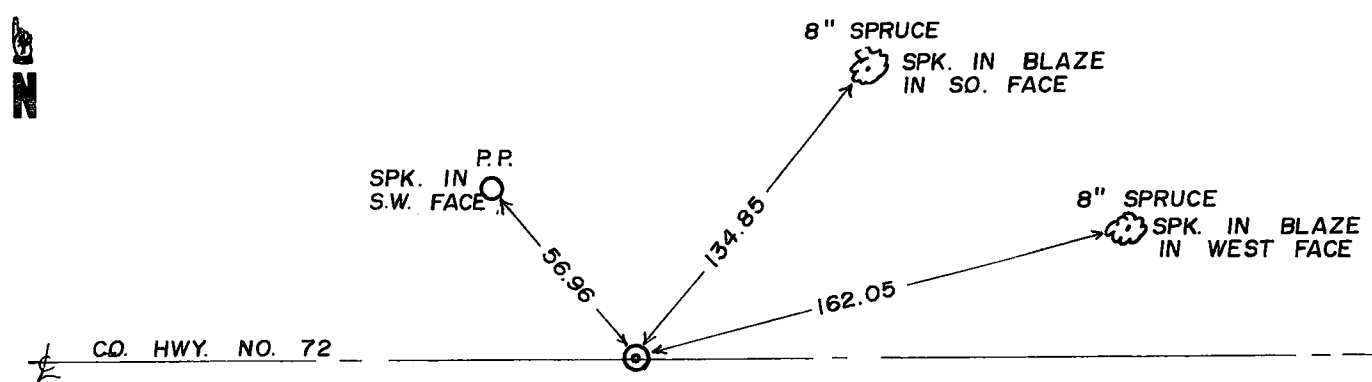
STATE OF MINNESOTA, County of KANABEC

At the corner location shown on the sketch

On 9-24-82 found a BOAT SPIKE
Date

left monument as found, lowered monument, removed monument (explain)
 On 9-28-82 placed a 4" x 17" C.I.M.
Date

SKETCH OF REFERENCE TIES



Statement of evidence relative to this corner location is on back of page.

I hereby certify that this document and the data contained herein was prepared by me or under my direct supervision.

M. B. Ryke 10-6-82
Signature Date

Registration No. 8195

Land Surveyor, Professional Engineer
 County Surveyor, County Engineer

County Recorder
OFFICE OF THE REGISTER OF DEEDS

County of Kanabec

I hereby certify that this document was filed in the Register of Deeds office at 10:45 A.M. on the

20 day of October A.D., 1982

County Recorder
Register of Deeds Velma J. Beeser

By _____, Deputy

DOCUMENT NO. _____

42/23

STATEMENT OF EVIDENCE

All of the original bearing trees are now gone.

In 1922, George H. Jinks, the County Surveyor, set a stone with an "+" at this corner - see Certificate No. 81. This corner is at the intersection of roads east and west and road south extended north.

On September 24, 1982, we found a boat spike at the Kanabec County Highway's PI at this corner and offset the boat spike and made an excavation with the county backhoe. The excavation was 15 feet square centered at the PI, 4 feet deep, 1 foot into the natural ground. No evidence was found in the excavation.

We accepted the Highway's PI as the best available evidence of the original corner location. This location is in harmony with accepted lines of occupation. We set a 4" by 17" cast iron monument at this corner to replace the boat spike.