

# CERTIFICATE OF LOCATION OF GOVERNMENT CORNER

East quarter Corner of Section 27, Township 40, Range 23, 4th P.M.

STATE OF MINNESOTA, County of KANABEC

At the corner location shown on the sketch:

*Set a 1/2" iron pipe with county aluminum cap*

Kanabec County U.S. Survey Feet Coordinates  
NAD 1983, HARN 1996 Adjustment  
Obtained by RTK GPS Observation

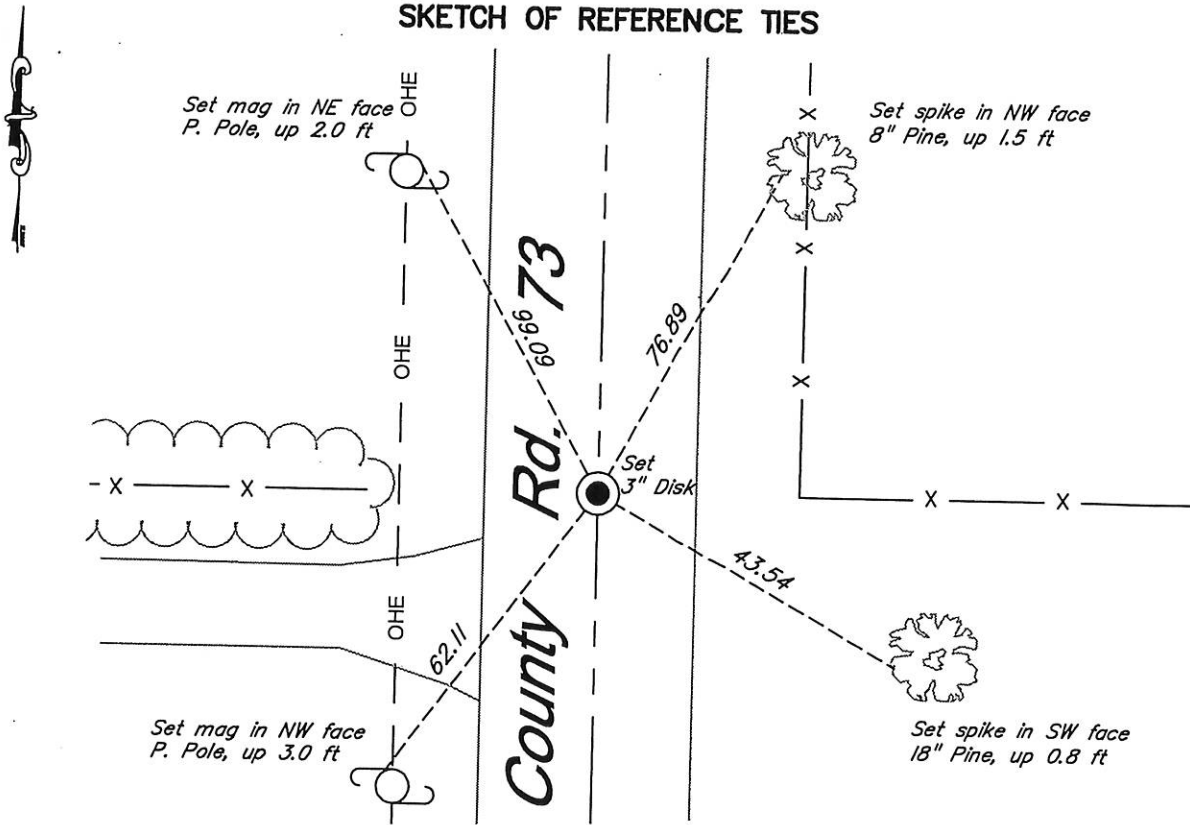
Northing= 171807.40

Easting= 427692.55

Note: NAD 1983, HARN 1996 Adjustment  
coordinates are NOT compatible with  
NAD 1983 coordinates

Note: 1 Meter=3937/1200 U.S. Survey Feet

## SKETCH OF REFERENCE TIES



Statement of evidence relative to this corner location is on back of page.

I hereby certify that this document and the data contained herein was prepared by me or under my direct supervision.

*Ernest J. Rud*  
Signature

Dec 6, 2014  
Date

Registration No. 9808

Land Surveyor,  Professional Engineer

County Surveyor,  County Engineer

## OFFICE OF THE COUNTY RECORDER

County of \_\_\_\_\_

I hereby certify that this document was filed in the County Recorder's office at \_\_\_\_\_ M. on the \_\_\_\_\_ day of \_\_\_\_\_ A.D., 20\_\_\_\_

County Recorder \_\_\_\_\_

BY \_\_\_\_\_ Deputy

DOCUMENT NO. \_\_\_\_\_

## STATEMENT OF EVIDENCE

East Quarter Corner Section 27, Township 40, Range 3

The original government post was set by a deputy surveyor John M. Gley on September 30, 1851 and two bearing trees noted as;

12" Birch bearing North 40° East at 23 Links

14" Sugar Maple bearing North 73° East at 10 Links

No visible evidence for post or bearing trees could be found

No subsequent surveys along this line on file at the Kanabec County office.

There is a road opening dated August 1905 on file in County Assessor's Office running from the center of Section 27 to the East Quarter Corner of Section 27. A road survey was done by Vickerey but no statement as to what type of monument if any, was at this corner. No road is on this line today. This corner falls on the Centerline of a North-South gravel road and fence line running East & West. The fence line running west to the center of Section 27 has a maximum variation of 2 feet from the East-West Quarter line of Section 27. The fence running east to the center of Section 26 has a maximum deviation of 6 feet at one point and is on and 1 foot off at the other two locations. Therefore we set a monument at the intersection of the fence with a straight line from the Northeast to the Southeast corner of Section 27. This fit the centerline of the road within 2 feet. A capped monument was set, ties taken and Kanabec County Coordinates established on this position.